

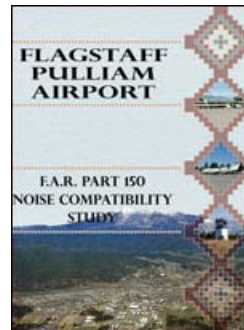


# FLAGSTAFF REGIONAL PLAN 2012

Economic Development Focus Group  
May 27, 2010

**Airport Break-out Group**

# Flagstaff Pulliam Airport



# What **TYPE** of businesses designated Airport “Business Park” would be most advantageous to the Flagstaff community?

## OPEN HOUSE (5/13 AND 5/19) PUBLIC COMMENTS SUMMARIZED:

- High-tech, R&D, ‘cluster’ of these
- Corporate offices
- Light industrial
- Manufacturing
- Hotel/ meeting center.
- Parking, storage, retail
- Startup company space
- Use “box” buildings to screen airport.



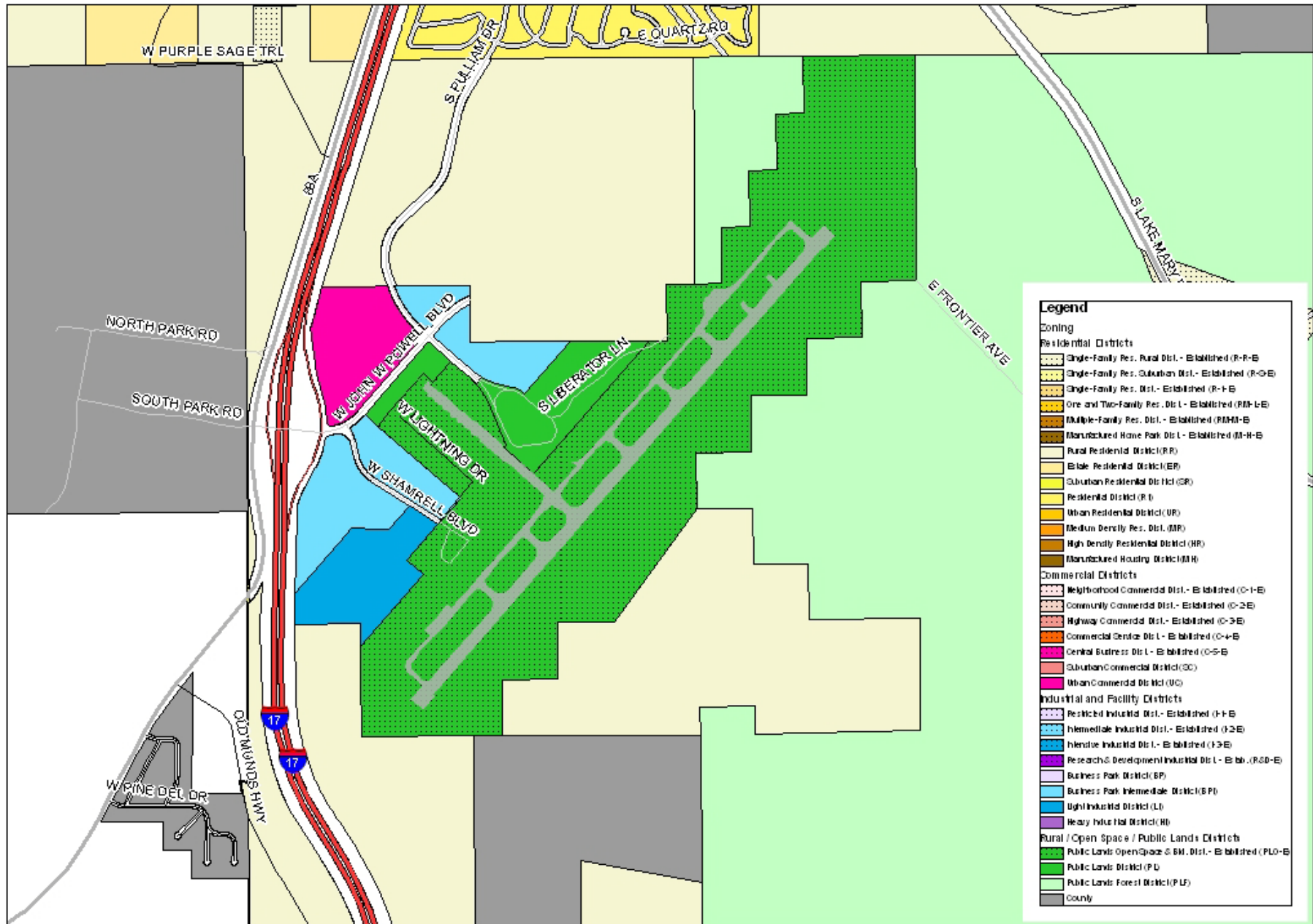
***•Note break out group comments here***

# What additional **services** would you like to see at the airport area?

## OPEN HOUSE (5/13 AND 5/19) PUBLIC COMMENTS SUMMARIZED:

- Connections with more regional airports, regional jets
- Downtown Flagstaff - Airport shuttle
- High speed rail to Phoenix
- Restaurant, coffee shop type draws with easy parking access.
- Hotel
- Business concierge for business travelers

***•Note break out group comments here***



1 inch = 1,461 feet



# Pulliam Airport Zoning



Map and Data is a Product of the City of Flagstaff  
 GIS Section  
 211 West Aspen Ave  
 Flagstaff, AZ 86001  
 (928) 213-2850

# How much can be built in the designated Airport “Business Park”?

## Zoning Note:

Within the BPI designation, there is 627 acres (27,312,120 sq. ft) of total developable land. At the .41 FAR for Light Industrial building space, total **allowable development becomes 11,197,969 sq ft**, with 10% of this space designated for commercial services, restaurants and commercial lodging.

The Urban Commercial (UC) designated space encompasses 32 acres (1393920 sq. ft). The FAR requirements (.25) allow for **348,480 sq ft** of developable footprint space.

***•Note break out group comments here***

# What are the biggest **CHALLENGES** to the Airport Business Park DEVELOPMENT?

- *Note break out group comments here.*

# What are the biggest **OPPORTUNITIES** to the Airport Business Park **DEVELOPMENT?**

- *Note break out group comments here.*



# ***INFRASTRUCTURE***

Do we have adequate **land use** for:

– *Note main themes from previous page here*

Do we have adequate **WORKFORCE** to support these business types?

– *Break-out group comments here*

Do we have adequate **POWER** to support this

**Airport development?**

- ***Break-out group comments here***
- ***Note traditional and renewable power sources***

Do we adequate **WATER RESOURCES** to  
support this Airport development?

– ***Break-out group comments here***

Do we have adequate **HOUSING** to support this  
development?

– ***Break-out group comments here***

Do we have adequate **TRANSPORTATION** to  
support this Airport development?

– ***Break-out group comments here***

# COMMENTS

– *Break-out group comments here*