



# FLAGSTAFF REGIONAL PLAN 2012

Economic Development Focus Group  
May 27, 2010

**Economic Development Break-out Group**

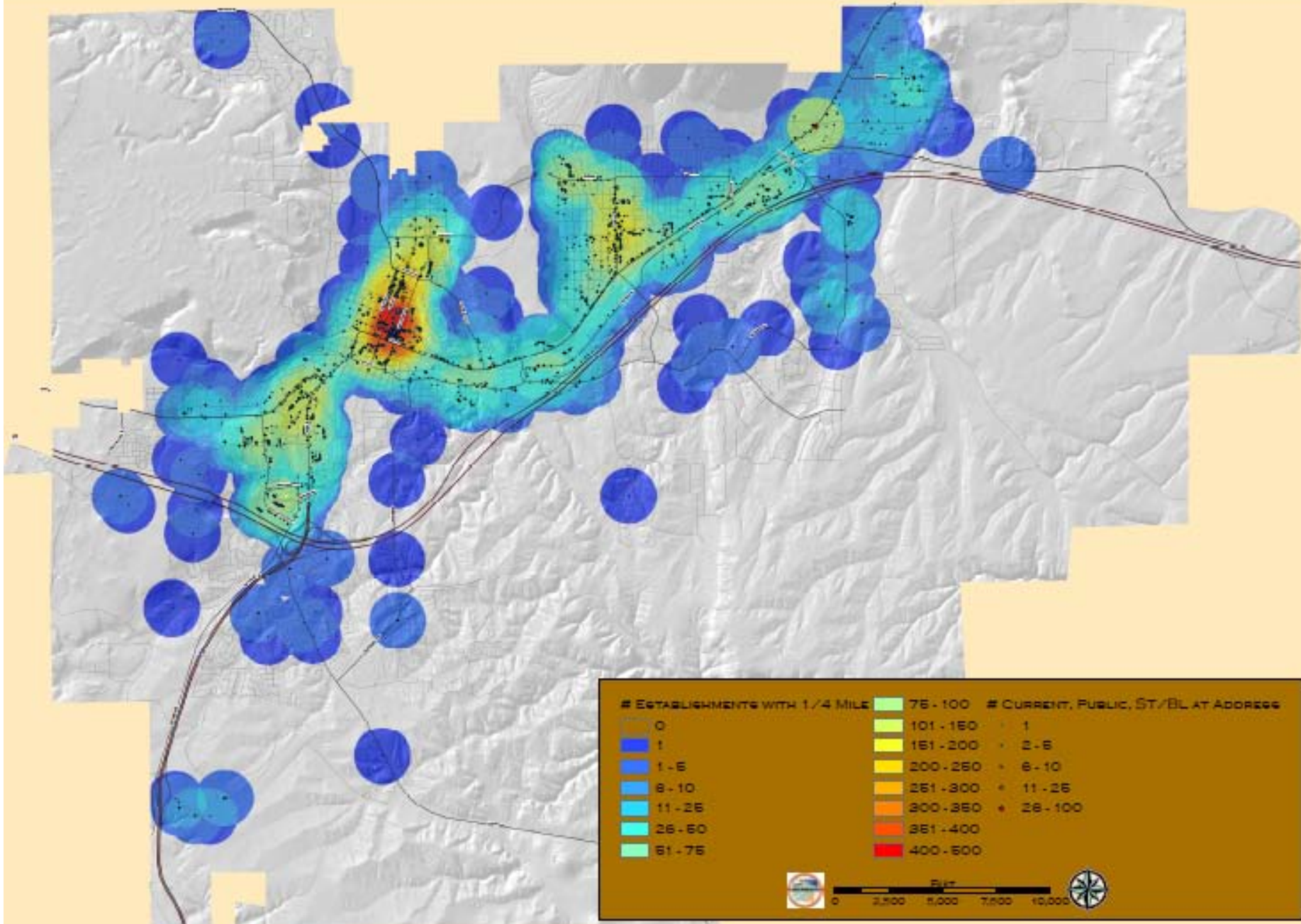
# ‘Economic Development’:

- **Business Retention & Expansion**
- **Business Attraction**
- **Workforce Development**

We are not here to discuss WHO is doing WHAT – but WHAT our community needs to / should focus on. FOCUS meaning a business plan for the community to build up necessary infrastructure, inventory and clients.

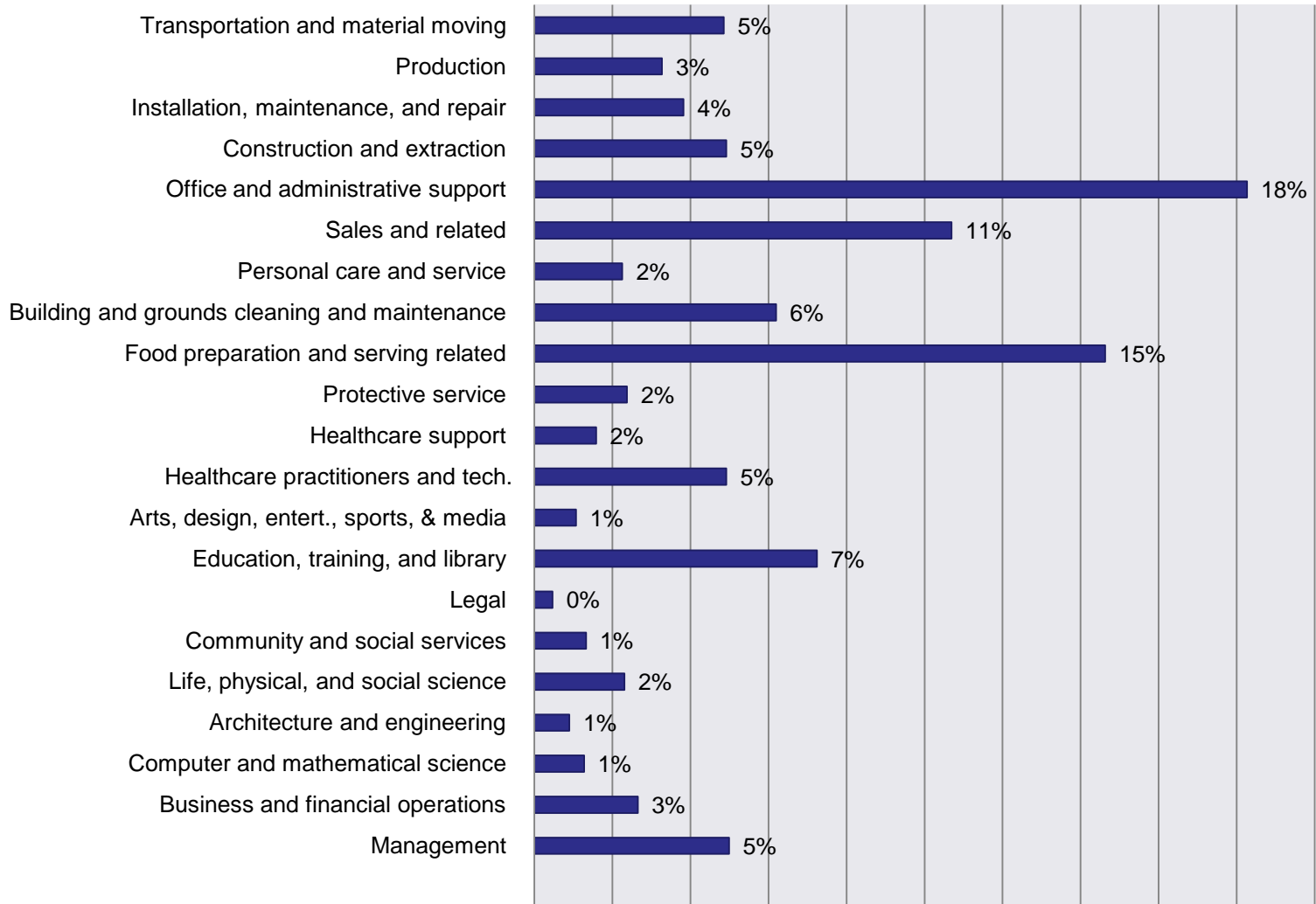
# *Where are the jobs in the Flagstaff area:*

# BUSINESS LOCATIONS AND 1/4 MILE DENSITY - 10/2009



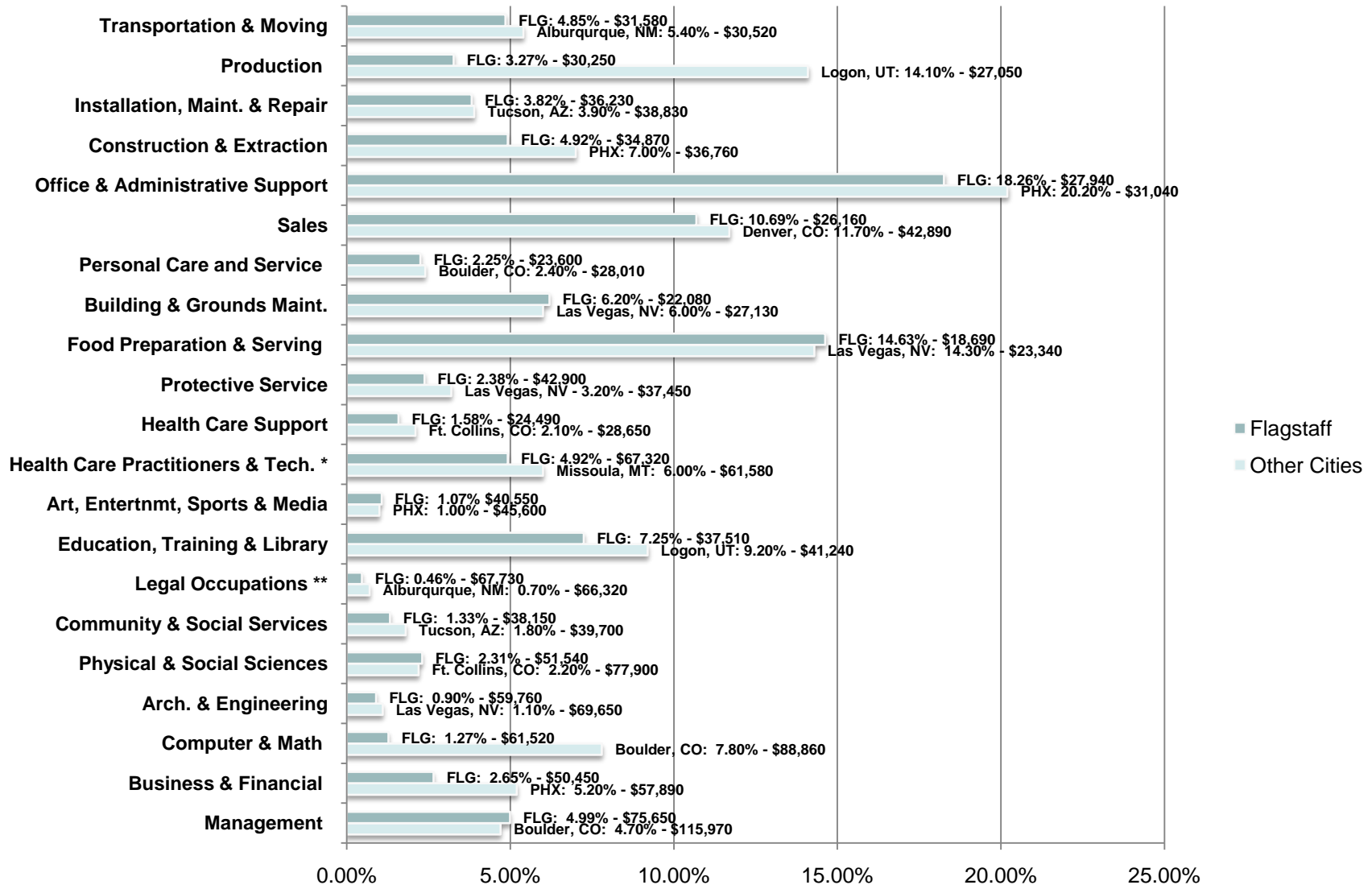
# What are the jobs in the Flagstaff area:

## Flagstaff Occupations - May 2010



# What are the jobs in the Flagstaff area:

## Flagstaff, AZ Employment (% in workforce) and Average Wages



# *What KIND of economic development:*

## **OPEN HOUSE (5/13 AND 5/19) PUBLIC COMMENTS SUMMARIZED:**

- **Self sustaining community** – *make food, energy, shelter and products; local banking.*

Where: macro and micro locations

- **Production** - *High tech, biotech, research and development, green/alternative energy,*

*solar, energy efficiency, commercial composting, forest-based,*

- Where: *Industrial / Business parks, industrial clusters; Camp Navajo as green*

*business park*

- Need: *internet capabilities; power grid*

- **N. Arizona media** – *radio, news paper, TV, webcast*

- **Snow Play:** *skiing infrastructure and transportation; snowplay options (tourism)*

- **Use existing strengths:** *timber, tourism, natural resources, rail lines, clean air,*

*entrepreneurialism*

# *What KIND of workforce development?*

## OPEN HOUSE (5/13 AND 5/19) PUBLIC COMMENTS SUMMARIZED:

### **Where do you feel our workforce could be improved?**

- **Skills to provide community needs** – *energy production, food production, water management, education (well paid teachers), large equipment and bus drivers, social skills for tourism trade.*
- **Prepare students for the real world:** *employer expectations, customer service skills, manners, vocational training, business and technical basics, professional action and dress, punctuality.*
- **Housing for our workforce**



# What KIND of economic development:

- *Break out group comments here*

# INFRASTRUCTURE

Do we have the right **land use** for:

- *Note main themes from previous page here*



# ***INFRASTRUCTURE***

**WHERE** should these be located?:

– *Break-out comments here*

*Clustered ED / Industry uses?*

Do we have adequate **WORKFORCE** to support  
this ED Focus?

– *Break-out group comments here*

# ***INFRASTRUCTURE***

Do we have adequate **POWER** to support this

**Focus?**

- ***Break-out group comments here***
- ***Note traditional and renewable power sources***

Do we have adequate **WATER** to support this ED

**Focus?**

- ***Break-out group comments here***
- ***Note traditional and renewable power sources***

Do we have adequate **HOUSING** to support this

**ED Focus?**

– *Break-out group comments here*

**Do we have adequate TRANSPORTATION to support  
this ED Focus?**

***– Break-out group comments here***

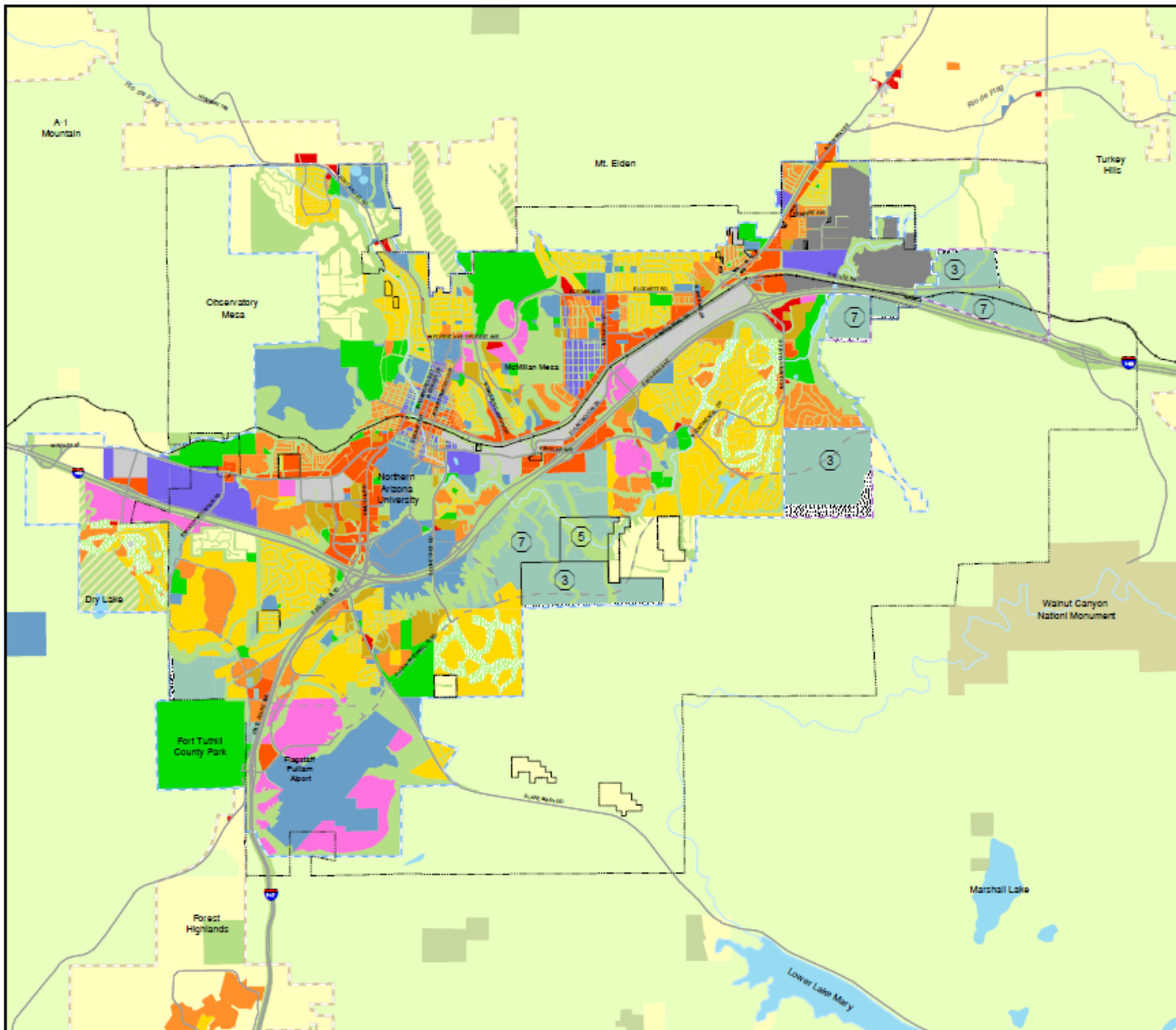


# COMMENTS

– *Break-out group comments here*



# FLAGSTAFF REGIONAL



## Map 4: City Land Use Plan

### Land Uses

- Rural Agriculture (<1 du/ac)
- Very Low Density Residential (<1 du/ac)
- Low Density Residential (1-5 du/ac)
- Medium Density Residential (6-12 du/ac)
- High Density Residential (>12 du/ac)
- Mixed Use
- Commercial Neighborhood
- Commercial Regional/Community
- Office/Business Park - Light Industrial
- Industrial Light/Medium
- Industrial Heavy
- Institutional
- Parks
- Urban Open Space
- Rural Open Space
- Golf Course
- Planning Reserve Area
- Public Multiple Use
- Transition Zone
- National Monuments
- Flagstaff City Limits
- Urban Growth Boundary - Stage 1
- Urban Growth Boundary - Stage 2
- Rural Growth Boundary
- Existing Major Road
- Proposed Major Road
- Railroads
- Major Surface Water Features
- Required Average Densities (units per acre)

