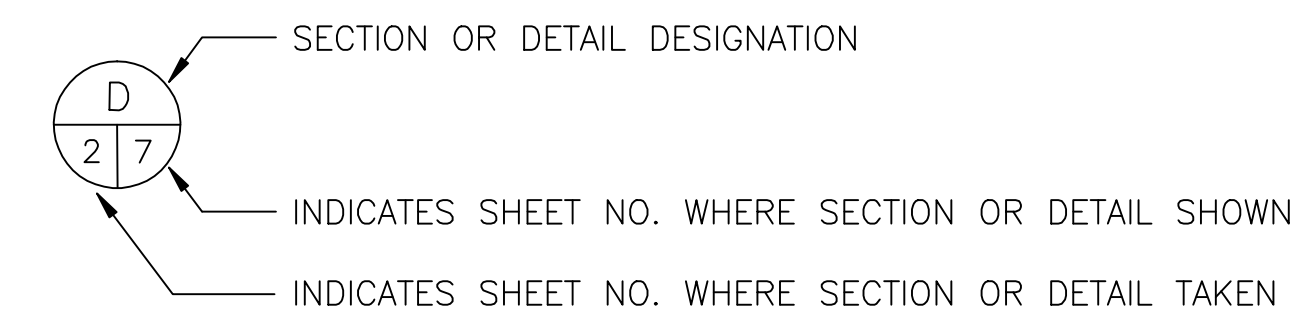


LEGEND

- D-1** CELL IN PHASE D
- APPROXIMATE PHASE BOUNDARY
- (D)** PHASES
- ANTICIPATED LANDFILL FOOTPRINT IN EXPANSION AREA
- BERM DITCH
- CORRUGATED HDPE PIPE
- PERIMETER DITCH
- SADDLE DITCH
- RIDGE LINE
- X---X---X--- EXISTING FENCE
- PROPOSED EXPANSION LIMITS (343.91 ACRES)
- EXISTING LANDFILL (110.28 ACRES)
- ANTICIPATED PROPERTY BOUNDARY
- LEACHATE COLLECTION PIPES (AND OPTIONAL LEACHATE FORCE MAIN)
- 6680----- 10ft CONTOURS
- 2ft CONTOURS
- ROAD WAY
- ← DRAINAGE DIRECTION
- ⊕ INDICATES VADOSE ZONE MONITORING STATION
- ⊕_{LFL-1} LANDFILL LIMITS BORINGS (WCC, 1996)
- ⊕_{WC-12} GEOTECHNICAL BORING (WCC, 1996)
- ⊕_{IA-1} INFILTRATION AREA BORING (WCC, 1996)
- ⊕_{V-1} VADOSE ZONE WELL (WCC, 1995)
- ⊕_{MW-12} GAS MONITORING WELL (WTI, 1991)
- ⊕_{MW-7} LOCATION OF LFG MONITORING WELL DESTROYED IN 1995
- ▨ EXISTING EXCAVATION AREA
- ▨ ACTIVE OPERATION AREA
- ▨ LINER AREA



NOTES:

1. PLANS FOR LINED EXCAVATION AREA ARE CONCEPTUAL. DETAILS MAY VARY SLIGHTLY FOR CONSTRUCTION WHICH WILL OCCUR SEVERAL YEARS INTO THE FUTURE. CONSTRUCTION PLANS AND SPECIFICATIONS WILL BE SUBMITTED TO ADEQ FOR REVIEW AND APPROVAL PRIOR TO CONSTRUCTING LINED CELLS AND FINAL CAP.
2. CONTOURS WITHIN FENCELINE BASED ON AERIAL SURVEY PROVIDED BY HORIZONS AERIAL PHOTOGRAPHY FROM 11/14/96 MAPPING. CONTOURS IN EXPANSION AREA ARE BASED ON AERIAL SURVEY PROVIDED BY KENNEY AERIAL MAPPING, INC. FROM 4/26/95 MAPPING. UPDATED BY NORTHLAND SURVEYORS, BY GROUNDSURVEY, IN APRIL 1998
3. PHASES SHOWN ON SHEET 5 HAVE THE FOLLOWING APPROXIMATE REMAINING VOLUMES (AS OF 12/31/97):
 AREAS A-C (EXISTING FOOTPRINT) - 7.3 MILLION CUBIC YARDS
 AREA D - 3.8 MILLION CUBIC YARDS
 AREA E - 14.1 CUBIC YARDS
4. LEACHATE FORCE MAIN AND HOLDING TANKS (IF NECESSARY) WILL BE CONSTRUCTED WHEN THE 1ST CELL IS LINED.

NOT FOR CONSTRUCTION

0:\934\246A\CIN0002.DWG

| REV | DESCRIPTION OF REVISION | BY | DATE |
|-----|-------------------------|----|------|
| | | | |
| | | | |
| | | | |
| | | | |



Woodward-Clyde

Consultants

Engineering & sciences applied to the earth & its environment

410 N. 44th St., Suite 350
Phoenix, AZ 85008

WARNING

IF THIS BAR DOES NOT MEASURE 1" THEN DRAWING IS NOT TO SCALE

| | |
|--------------------|--|
| DESIGNED SM | CINDER LAKE LANDFILL Flagstaff, Arizona |
| DRAWN EG | |
| CHECKED BH | |
| PEER REVIEWED LH | |
| PROJECT MANAGER DM | |
| DATE 4/24/98 | |

| |
|------------------|
| REVISION |
| PROJECT 934X246A |
| DRAWING 1 |

NOTES AND ABBREVIATIONS