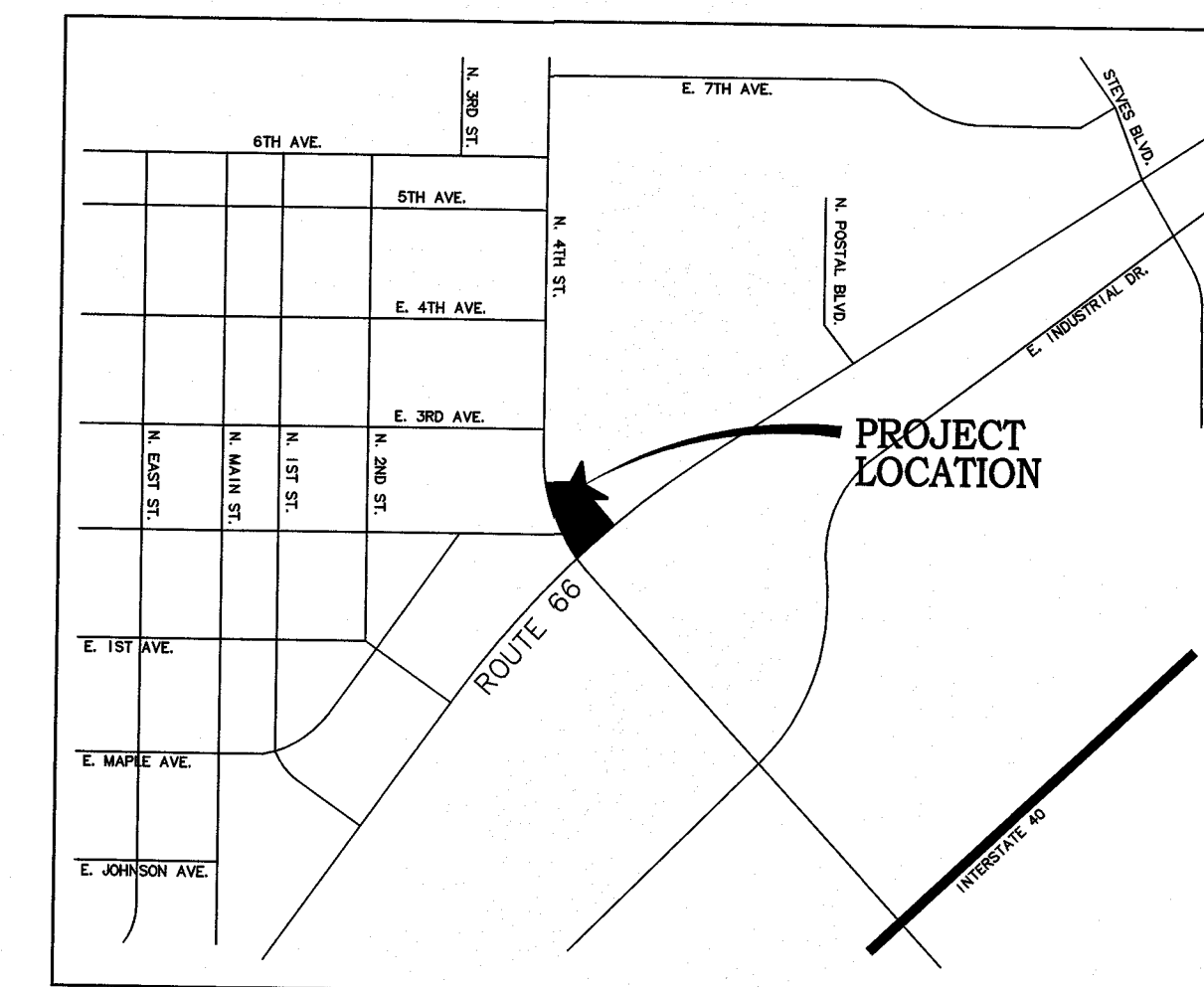


FOURTH STREET GATEWAY PLAZA

LOCATED IN THE NORTHWEST QUARTER OF SECTION 13,
TOWNSHIP 21 NORTH, RANGE 7 EAST OF THE GILA AND SALT
RIVER BASE AND MERIDIAN, CITY OF FLAGSTAFF, COCONINO
COUNTY, ARIZONA



VICINITY MAP
N.T.S.

OWNER/DEVELOPER

CITY OF FLAGSTAFF
211 W. ASPEN AVENUE
FLAGSTAFF, AZ 86001
PHONE: (928) 213-2906
FAX: (928) 779-7684
CONTACT: MARK DI LUCIDO, RLA

LANDSCAPE ARCHITECT

OTAK
51 W. THIRD STREET, SUITE 201
TEMPE, AZ 85281
PH: 480-557-6670
FAX: 480-557-6506
CONTACT: BRAD BIELENBERG, PLA

CIVIL ENGINEER

SHEPHARD WESNITZER, INC.
110 WEST DALE AVENUE
FLAGSTAFF AZ 86001
PH: 928-773-0354
FAX: 928-774-8934
CONTACT: GUILLERMO CORTES

BENCHMARK

POINT #3019 = FOUND 3" ADOT BRASS CAP IN HAND WELL
LATITUDE = 35°12'38.61391"N NORTHING = 76726.607 FT
LONGITUDE = 111°36'48.50795"W EASTING = 70953.940 FT
ELLIPSOID HEIGHT = 6801.801 FT ELEVATION = 6877.603 FT
ESTIMATED ACCURACY
HORIZ = ±0.027 FT
VERT = ±0.035 FT

POINT #3020 = FOUND 2-1/2" BRASS CAP "CITY OF FLAGSTAFF RLS 16544"
LATITUDE = 35°12'12.20924"N NORTHING = 74055.981 FT
LONGITUDE = 111°36'48.29133"W EASTING = 70972.009 FT
ELLIPSOID HEIGHT = 6301.897 FT ELEVATION = 6839.358 FT
ESTIMATED ACCURACY
HORIZ = ±0.023 FT
VERT = ±0.038 FT

BASIS OF BEARING

N 00°23'15" W - 2670.69' BETWEEN POINTS #3019 & #3020.

APPROVAL BLOCK

THE CITY APPROVES THESE PLANS FOR CONCEPT ONLY. THE CITY SHALL NOT BE LIABLE FOR ERRORS OR OMISSIONS OF THE DESIGN ENGINEER.

CITY ENGINEER	_____	DATE	_____
CITY PUBLIC WORKS DIRECTOR	_____	DATE	_____
CITY UTILITIES DIRECTOR	_____	DATE	_____
ARIZONA DEPARTMENT OF TRANSPORTATION	_____	DATE	_____



SITE MAP
1" = 40'

ESTIMATED QUANTITIES		
PLANTING	TOTAL	UNITS
Pinus nigra - AUSTRIAN PINE	8	EA
Acer rubrum - "JEFFERS"	3	EA
Populus tremuloides - QUAKING ASPEN	7	EA
Fraxinus pennsylvanica - GREEN ASH	1	EA
Cornus sericea - RED-OSIER DOGWOOD	8	EA
Pereskia atropurpurea - RUSSIAN SAGE	18	EA
Calamagrostis x actiuifolia - KARL FORESTER GRASS	85	EA
Festuca ovina 'Glaucol' - BLUE FESCUE	89	EA
WILDFLOWER HYDROSEED MIX	2290	SQ. FT.

IRRIGATION		
CONCRETE VALVE BOX - MAG STD. DTL. 320-2 - CLASS AA CONC. PER SECT. 725 WITH CAST IRON LID	1	EA
BALL VALVES-SCHEDULE 40 PVC - SIZE=1 INCH	2	EA
1.0 GPH TREE DRIP EMITTERS	114	EA
FLUSH VALVES-NETA FIM TLV.1 AUTO FLUSHING VALVE WITH INSERT FITTING AND SLIP COLLAR	6	EA
SCH. 40 PVC LATERAL 1" DIAMETER	510	LF

PAVING		
INTEGRAL COLOR CONCRETE	3120	SQ. FT.
SANDSTONE PAVER TILE - COLOR BUCKSKIN	1780	SQ. FT.
SANDSTONE PAVER TILE - COLOR SEDONA RED	570	SQ. FT.
COBBLESTONE PAVING	65	SQ. FT.
TREE GRATE COR. 10 STEEL; DETAIL 7, SHEET 8.0	1	EA

MASONRY		
MALPAIS STONE WALL WITH SANDSTONE CAP	125.5	LF
MALPAIS STONE MONUMENT WALL WITH COR-TEN STEEL SIGN PANEL	20	LF
MALPAIS STONE PIER	1	EA
ONYX PIER	1	EA
CAST ALUMINUM LETTERS	12	EA
WALL LIGHTS	9	EA
INTERPRETIVE PANEL	1	EA

DRAINAGE		
6" PVC PIPE (GD 7)	38	LF
8" PVC PIPE TREE WATERING (GD 13)	22	LF
TYPE X INLET NYLO PLAST INLINE 18" DIP DOME GRATE (GD 6)	1	EA
TYPE X INLET NYLO PLAST INLINE 12" BRONZE GRATE (GD 9)	1	EA
CONCRETE HEADWALL	6.5	LF
12" X 18" METAL GRADE (GD 2)	1	EA
4" PVC (GD 5)	10	LF
DEMO CURB AND SIDEWALK (GD 1)	~24	SF
RIP RAP D50 = 6" - 12" THICK (GD 3)	15	SF
MIRAFI 140 N FILTER FABRIC (GD 3)	7	SF
BIORETENTION BASIN PER DTL 2, SHEET 8.4 WITH 8" GRAVEL, 18" TOP SOIL, AND GEOTEXTILE LINER (GD 4)	170	SF
ADS N12 - 12" DIAMETER PIPE (GD 8)	55	LF

SHEET INDEX

- 1.0 COVER SHEET
- 1.1 NOTES/ LEGEND
- 2.0 HARDSCAPE PLAN
- 3.0 GRADING & DRAINAGE PLAN
- 4.0 PLANTING PLAN
- 5.0 IRRIGATION & ELECTRICAL PLAN
- 6.0 LAYOUT PLAN
- 7.0 ELEVATION
- 8.0 PAVING AND DRAINAGE DETAILS
- 8.1 WALL DETAILS
- 8.2 PLANTING DETAILS
- 8.3 IRRIGATION DETAILS
- 8.4 SEE UPDATED PLANS
- 8.5 SPECIAL PROVISIONS

IMPERVIOUS AREA ON SITE

6510 SF

UTILITY INFORMATION

1. THESE PLANS HAVE BEEN SUBMITTED TO THE FOLLOWING UTILITY COMPANIES AND THE WORK CONTAINED IN THESE PLANS HAS BEEN APPROVED BY THESE COMPANIES WITHIN THEIR AREA OF INTEREST. THE SIZE AND LOCATIONS, AS SHOWN, OF THE GAS, TELEPHONE AND POWER LINES, AND CONNECTIONS AGREE WITH THE INFORMATION CONTAINED IN THE UTILITY COMPANY'S RECORDS, WHERE THE WORK TO BE DONE CONFLICTS WITH ANY OF THESE UTILITIES, THE CONFLICTS SHALL BE RESOLVED AS SPECIFIED IN THE SPECIAL PROVISIONS AND/OR AS OTHERWISE NOTED ON THESE PLANS. CONFLICTS ARISING DURING THE COURSE OF CONSTRUCTION FROM UNFORESEEN CIRCUMSTANCES SHALL BE REPORTED TO THE INTERESTED UTILITY COMPANY AND BE RESOLVED BY THEM AND THE DESIGN ENGINEER.
2. THE CITY WILL NOT PARTICIPATE IN THE COST OF CONSTRUCTION OR UTILITY RELOCATION.

CENTURY LINK	_____	DATE	_____
ARIZONA PUBLIC SERVICE CO.	_____	DATE	_____
UNISOURCE GAS COMPANY	_____	DATE	_____
SUDDENLINK	_____	DATE	_____

SUMMARY OF UTILITY CONFLICTS

NONE

INCORPORATE LID DETAILS PROVIDED BY CITY OF FLAGSTAFF
REVISIONS

NO.	DATE	BY	CHECKED & APPROVED	REVISIONS
1	5.28.14	bmb	bmb	

BRADLEY M. BIELENBERG
46054
Professional Engineer
Arizona U.S.A.
Expires 3/31/16

THOMAS JOSEPH GREEN
50202
Professional Engineer
Arizona U.S.A.
Expires: 09/30/2015

FOURTH STREET GATEWAY PLAZA
FLAGSTAFF, ARIZONA
COVER SHEET

HanniGlobal Partner
51 WEST THIRD STREET
TEMPE, AZ 85281
PHONE: (480) 557-6670
FAX: (480) 557-6505

Project No. 17165
Sheet 1 of 13

1.0

Drawing No. 17165-1.0

© 2013 Otak, Inc.

Plotfile: Jun 12, 2014 - 11:23am d:\project\17165\17165\Draw\Landscap\17165001.dwg Layout Name: 1.0