

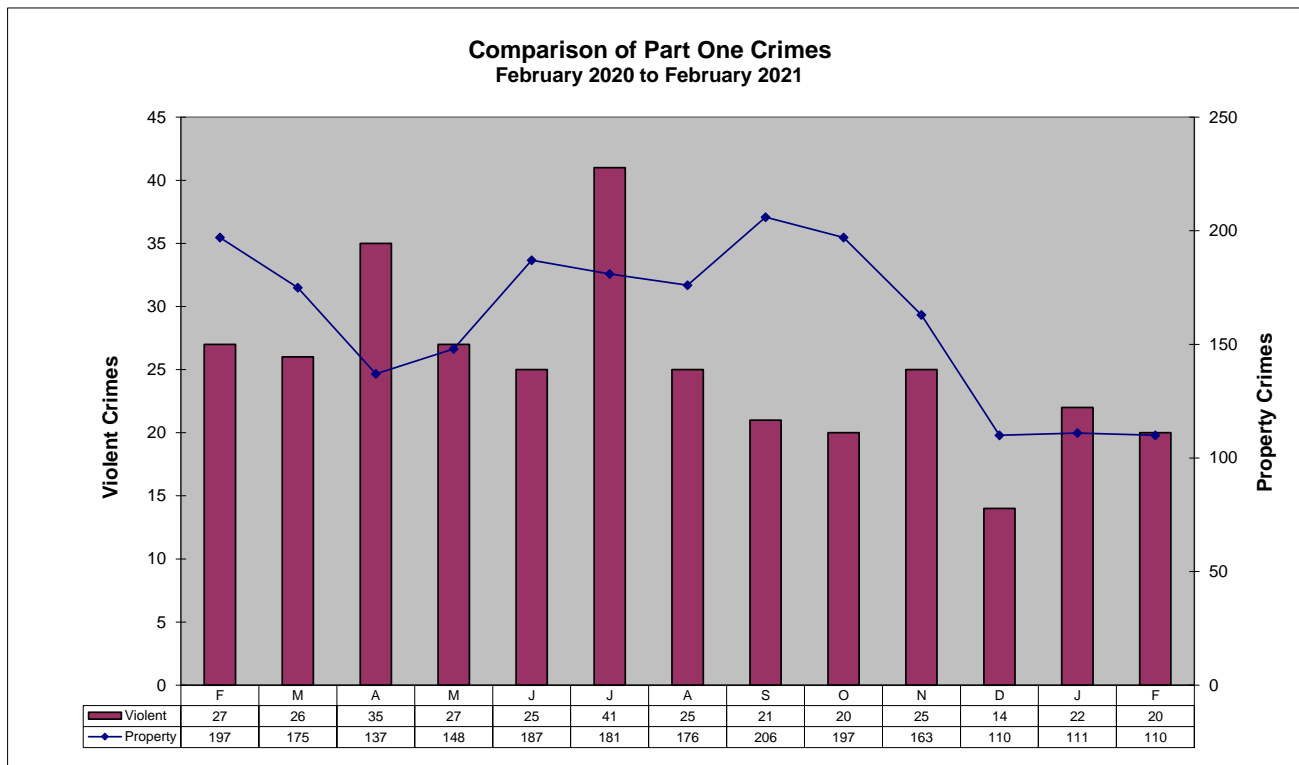
CompStat Report

FLAGSTAFF POLICE DEPARTMENT
FEBRUARY 2021



Part One Crime Summary February 2021

CRIME TYPE	Nov	Dec	Jan	Feb	YTD		% Change	CLEARED 2021	% CLEARED	
					2021	2020			2021	2020
HOMICIDE*	0	0	0	0	0	0	0%	0	0%	0%
SEX OFFENSES*	9	7	10	5	15	15	0%	6	40%	53%
SEX ASSAULTS	7	7	6	3	9	8	13%	5	56%	13%
ROBBERY*	5	2	4	5	9	7	29%	1	11%	43%
AGG ASSAULT*	11	5	8	10	18	35	-49%	13	72%	94%
BURGLARY	18	5	9	7	16	12	33%	2	13%	42%
LARC THEFT	137	98	94	96	190	362	-48%	61	32%	33%
GTA	8	7	8	6	14	5	180%	71	50%	80%
VIOLENT*	25	14	22	20	42	57	-26%	20	48%	77%
PROPERTY	102	82	111	110	221	379	-42%	55	25%	33%
GRAND TOTAL	188	124	133	130	263	436	-40%	75	29%	39%
ARSON	1	0	0	1	1	1	0%	0	0%	0%



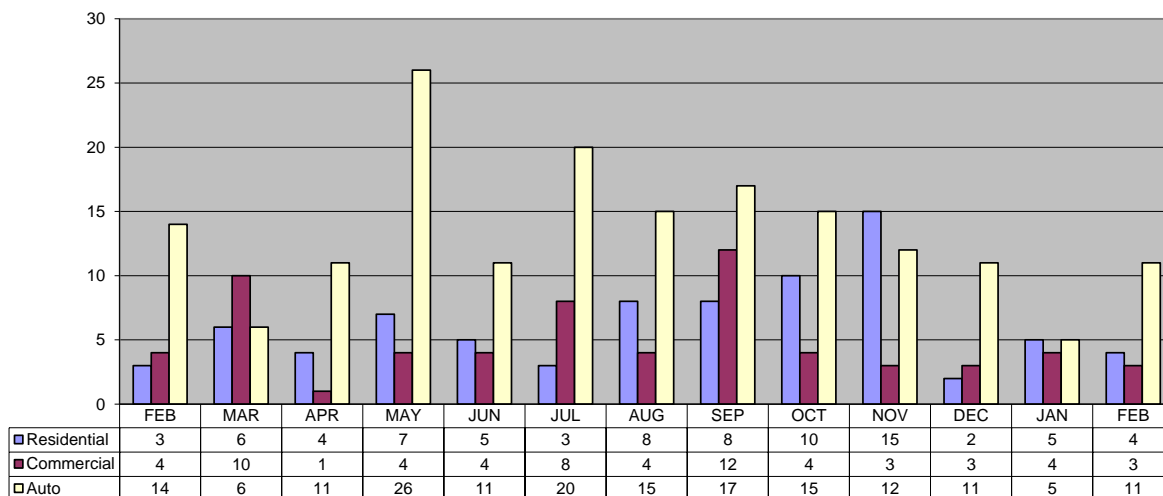
Patrol Activity / Goals

February 2021

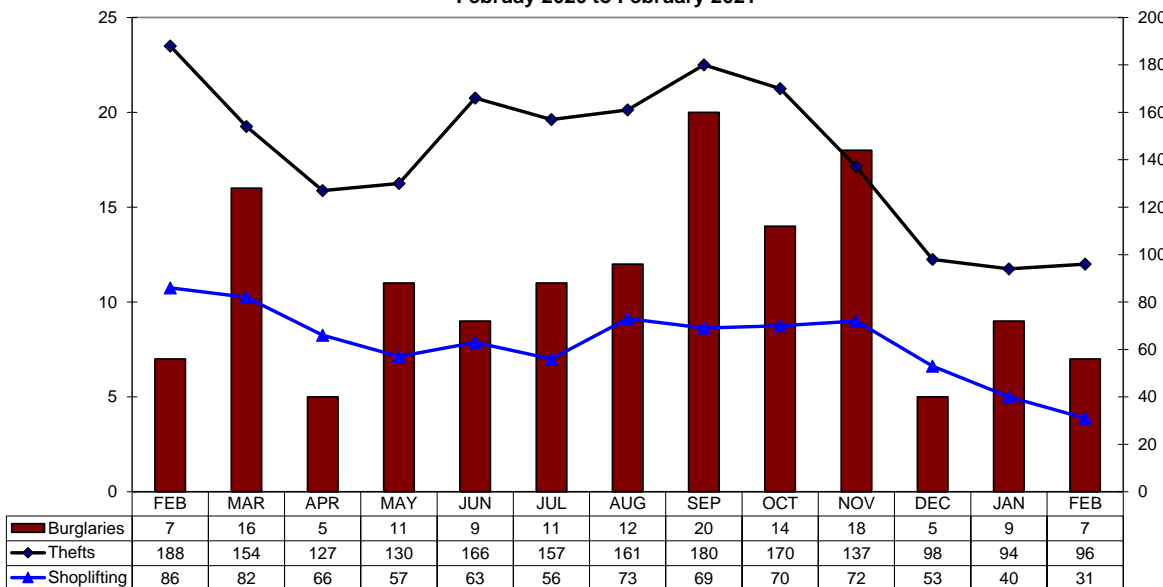
ACTIVITY TYPE	Oct	Nov	Dec	Jan	Feb	YTD 2021	YTD 2020	% change
Robberies	1	5	2	4	5	9	7	29%
Total Burglaries	14	18	5	9	7	16	12	33%
Res Burglaries	10	15	2	5	4	9	7	29%
Comm Burglaries	4	3	3	4	3	7	5	40%
Auto Burglaries	15	12	11	5	11	16	29	-45%
Shoplifting	70	72	53	40	31	71	74	-4%
Citations/Warnings	1,079	1,077	1,342	1,186	1,324	2,510	3,170	-21%
DUI Arrests	62	45	45	45	40	85	92	-8%
Collisions	233	170	205	259	174	433	431	0%

NOTE: In addition to the 40 DUI Arrests, there are 9 pending blood results.

Thirteen Month Comparison of all Burglaries February 2020 to February 2021



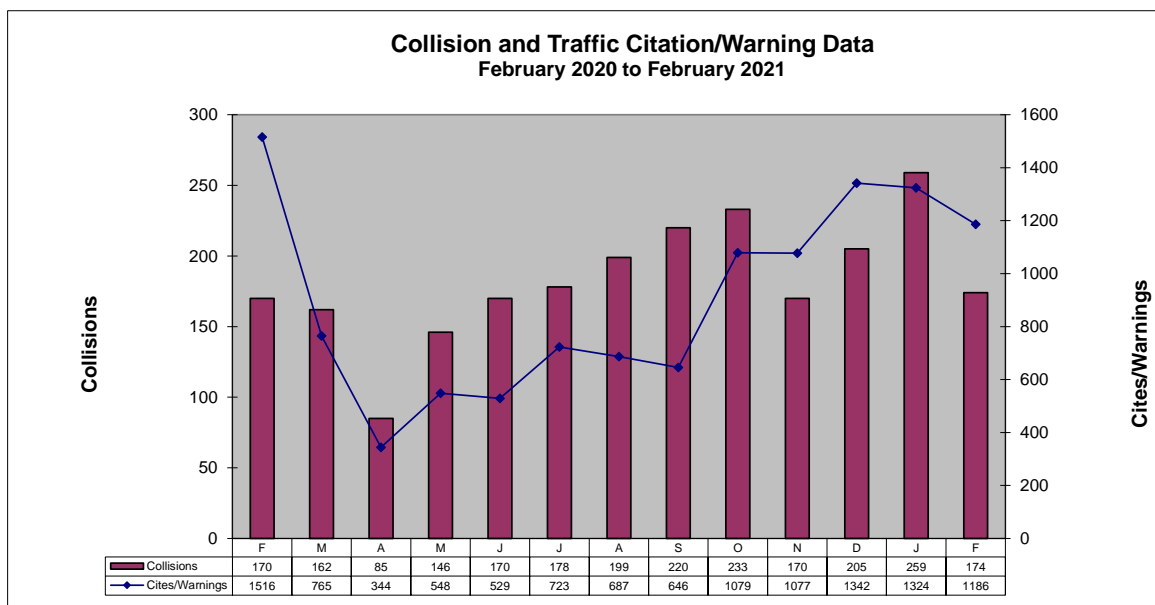
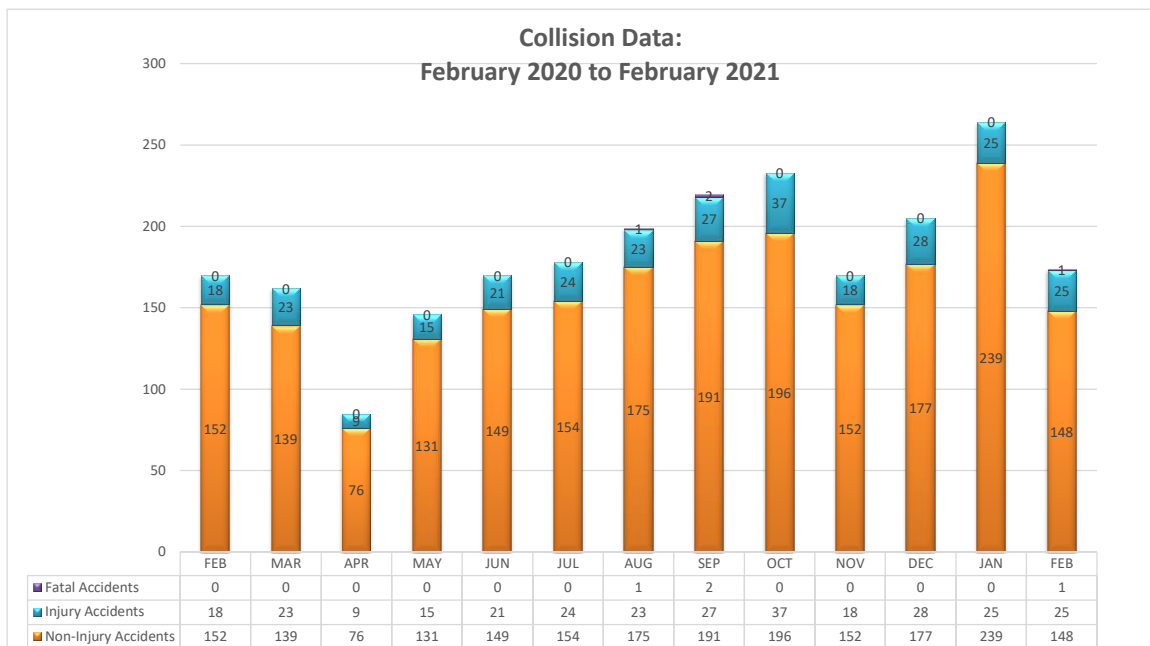
Thirteen Month Comparison of Thefts and Burglaries February 2020 to February 2021



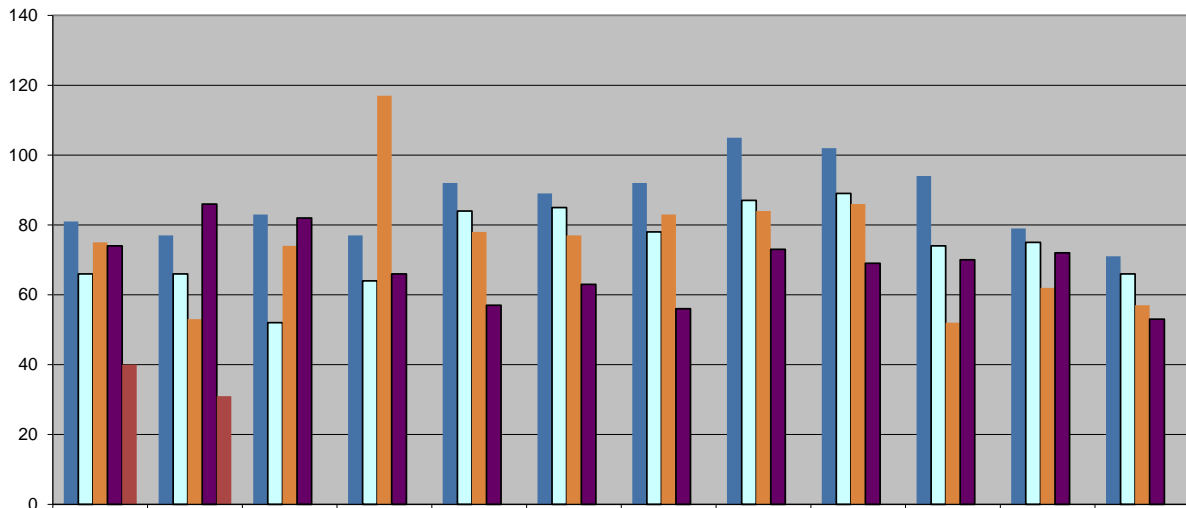
TRAFFIC DATA

February 2021

ACTIVITY TYPE	Oct	Nov	Dec	Jan	Feb	YTD 2021	YTD 2020	% Change
	Non-Injury Collisions	196	152	177	239	148	387	388
Injury Collisions	37	18	28	20	25	45	43	5%
Fatal Collisions	0	0	0	0	1	1	0	100%
Private Property Collisions	67	58	60	69	54	123	126	-2%
DUI Related Collisions	14	6	9	9	6	15	17	-12%
DUI Arrests (Total)	62	45	45	45	40	85	92	-8%
DUI Arrests (Alcohol)				44	38	82	81	1%
DUI Arrests (Drugs)				1	2	3	11	-73%
Traffic Citations	366	304	484	420	401	821	1,184	-31%
Warnings	713	773	858	904	785	1,689	1,986	-15%
Parking Citations	6	64	17	120	90	210	402	-48%
All Traffic Stops	1,313	1,320	1,436	1,580	1,512	3,092	3,382	-9%
Traffic Stops-No Enfor	96	97	129	139	98	237	334	-29%
30-Day Impounds	13	10	14	20	12	32	26	23%

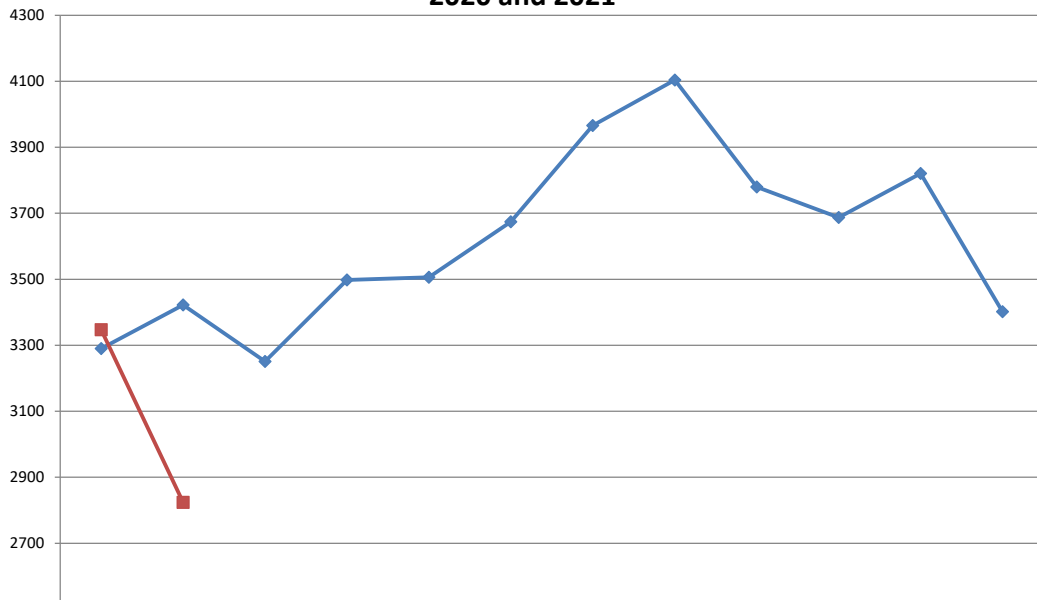


Shoplifting 5-Year Comparison



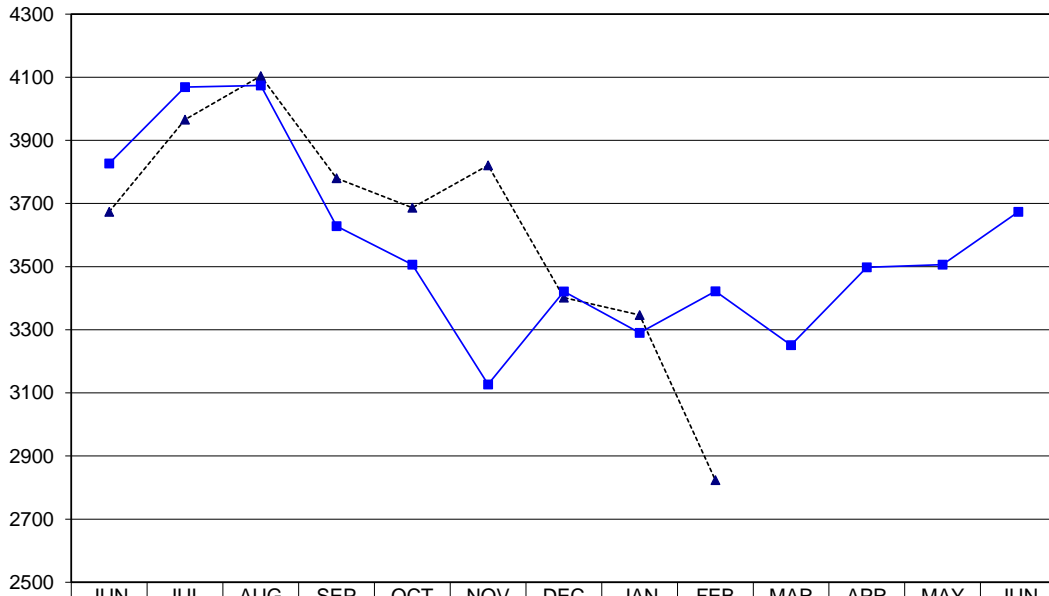
2017	81	77	83	77	92	89	92	105	102	94	79	71
2018	66	66	52	64	84	85	78	87	89	74	75	66
2019	75	53	74	117	78	77	83	84	86	52	62	57
2020	74	86	82	66	57	63	56	73	69	70	72	53
2021	40	31	0	0	0	0	0	0	0	0	0	0

Police Calls for Service - 12 Month Trend 2020 and 2021



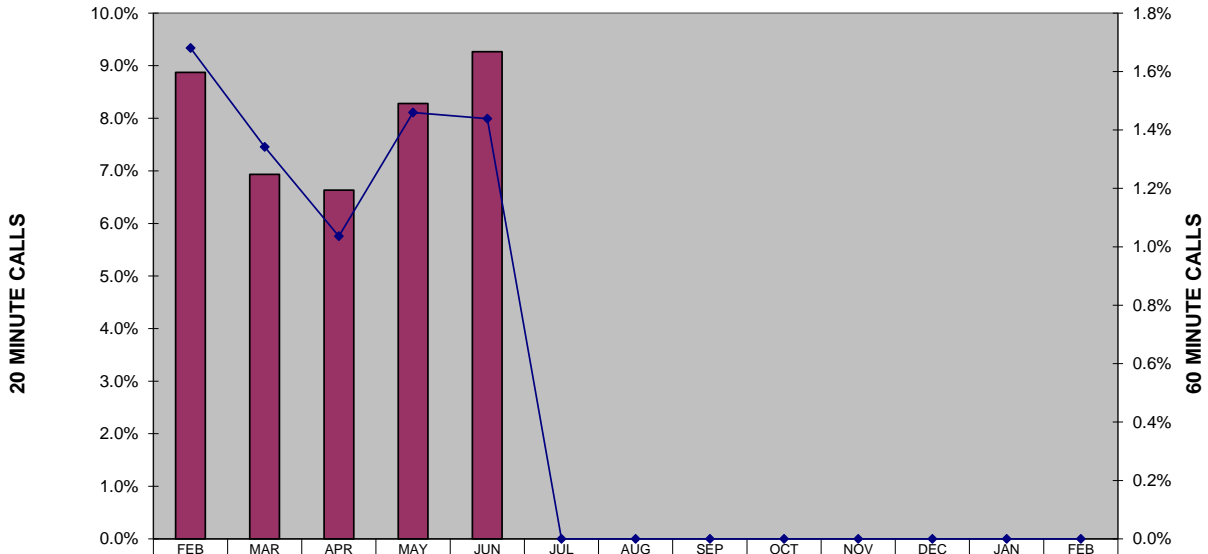
2020	3290	3422	3251	3498	3506	3674	3966	4104	3780	3687	3821	3402
2021	3347	2824										

**Police Calls for Service - 13 Month Trend
February 2021**



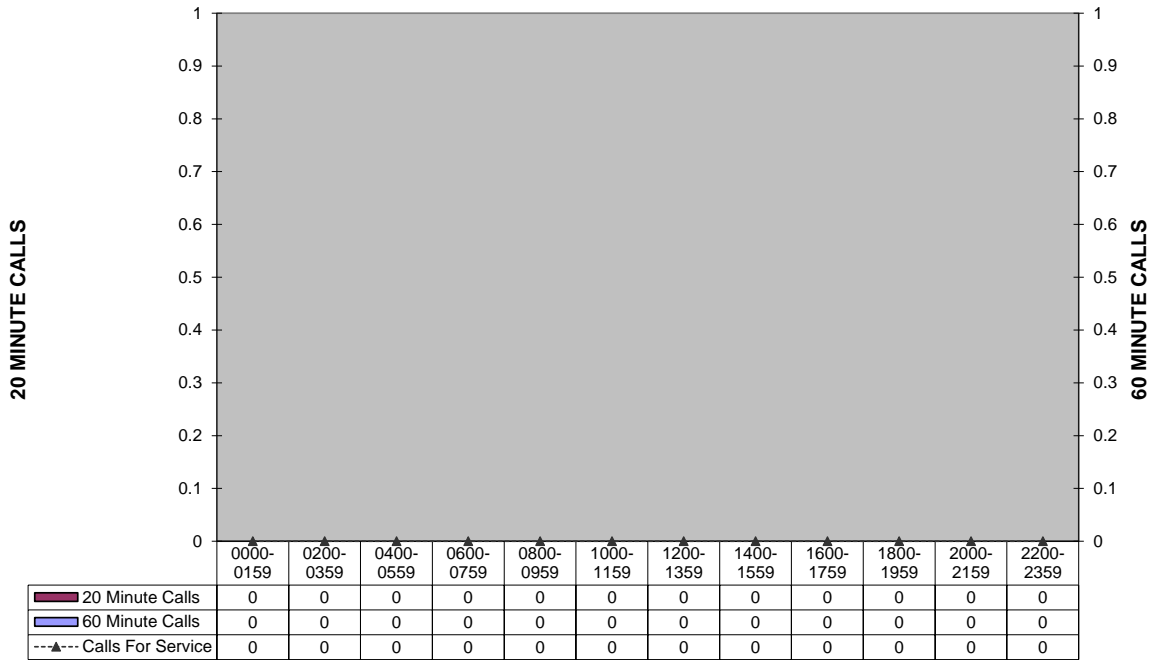
2020-2021 Calls	3674	3966	4104	3780	3687	3821	3402	3347	2824				
2019-2020 Calls	3827	4069	4074	3628	3506	3127	3421	3290	3422	3251	3498	3506	3674

**Percent of Police Calls Held 20 and 60 Minutes
(This custom report is being configured)**

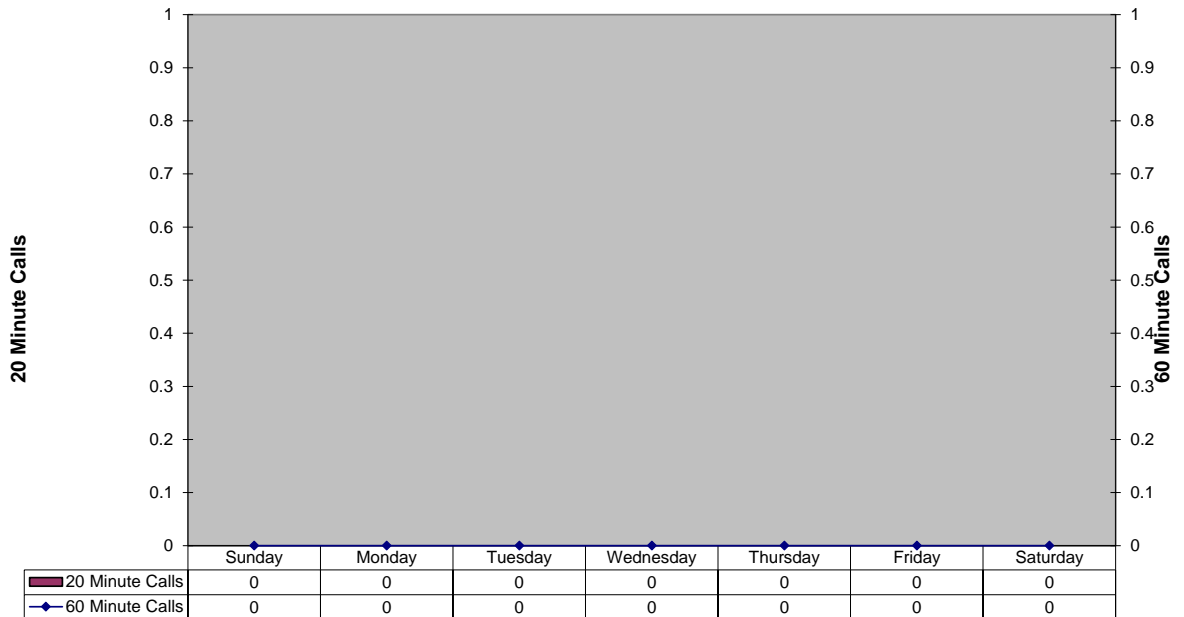


20 Minutes	8.9%	6.9%	6.6%	8.3%	9.3%	0.0%	0.0%	0.0%	0.0%	0.0%	0.0%	0.0%	0.0%
60 Minutes	1.7%	1.3%	1.0%	1.5%	1.4%	0.0%	0.0%	0.0%	0.0%	0.0%	0.0%	0.0%	0.0%

20 and 60 Minute Calls Held by Time of Day
(This custom report is being configured)

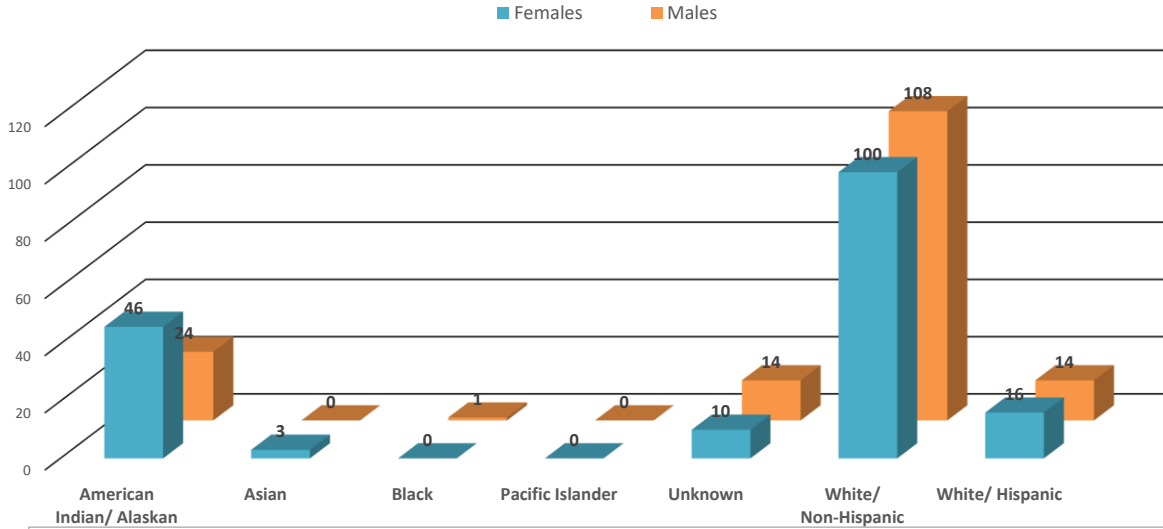


20 and 60 Minute Calls Holding by Day of Week
(This custom report is being configured)



In an effort to be more transparent, we have started presenting arrest and victimization rates year to date. These statistics are currently being impacted by trends related to the Covid -19 pandemic. Flagstaff has seen less visitation and tourism, and a reduction in our college student population. This has positively manifested itself in reduced criminality and arrests in some areas. Our community is one of only a few that has provided additional housing options for homeless populations. This has drawn more homeless individuals to Flagstaff. Unfortunately, we continue to see Native American members of our homeless population over-represented in both arrest and victimization data. Many of these arrests are on those who are not City residents, and many of these arrests are of repeat offenders.

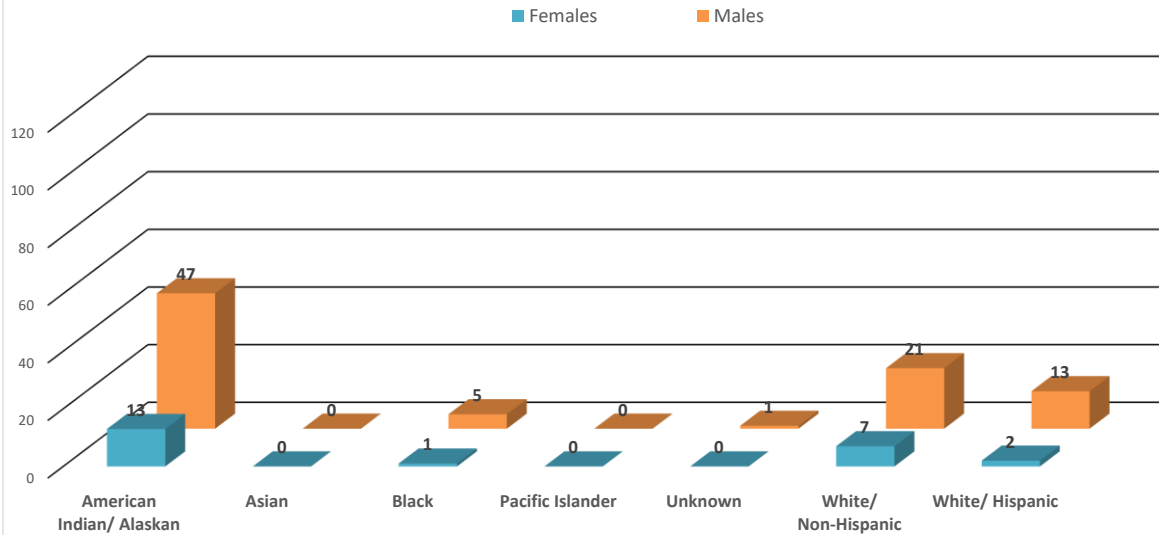
2021 Year To Date: Felony Incidents- Victims by Race



*This data is representative of a single, victim by race/ethnicity, in a single incident only. There may be multiple victims of the same race/ethnicity within that incident, but that data is not captured or displayed above.

**If there are multiple victims within the same incident, that have a different race/ethnicity, those differing races/ethnicities are identified and displayed above.

2021 Year To Date: Felony Arrests by Race

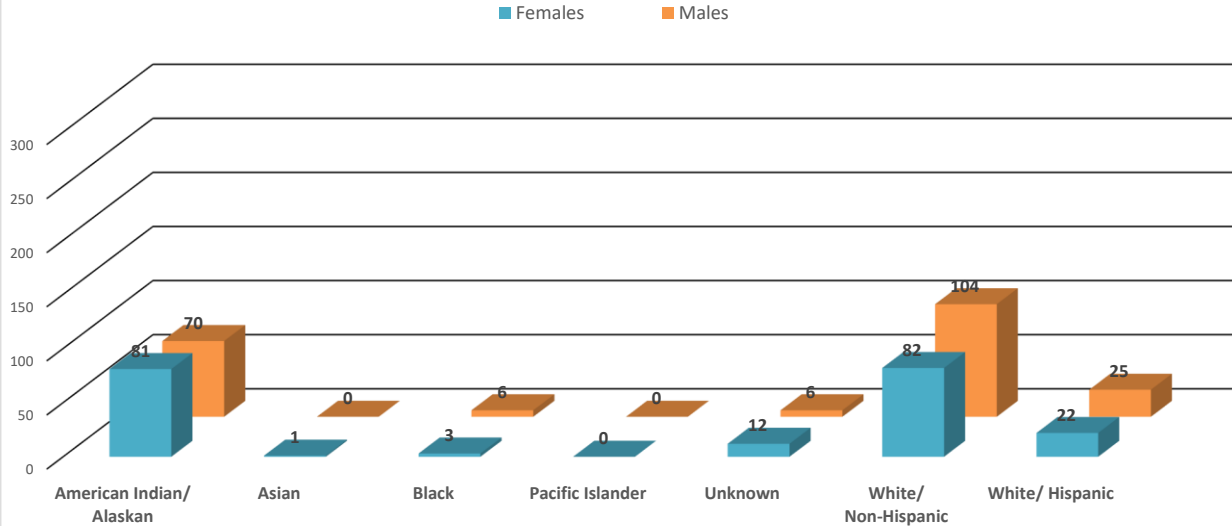


*This data is representative of a single, individual arrest by incident only; these numbers do not reflect the total number of charges from a single incident.

**There may be individuals who have been arrested for different incidents; if the same person is arrested for a different incident (generally different time/date/location), that information is captured and displayed on the above chart.

In an effort to be more transparent, we have started presenting arrest and victimization rates year to date. These statistics are currently being impacted by trends related to the Covid -19 pandemic. Flagstaff has seen less visitation and tourism, and a reduction in our college student population. This has positively manifested itself in reduced criminality and arrests in some areas. Our community is one of only a few that has provided additional housing options for homeless populations. This has drawn more homeless individuals to Flagstaff. Unfortunately, we continue to see Native American members of our homeless population over-represented in both arrest and victimization data. Many of these arrests are on those who are not City residents, and many of these arrests are of repeat offenders.

2021 Year To Date: Misdemeanor Incidents- Victims by Race

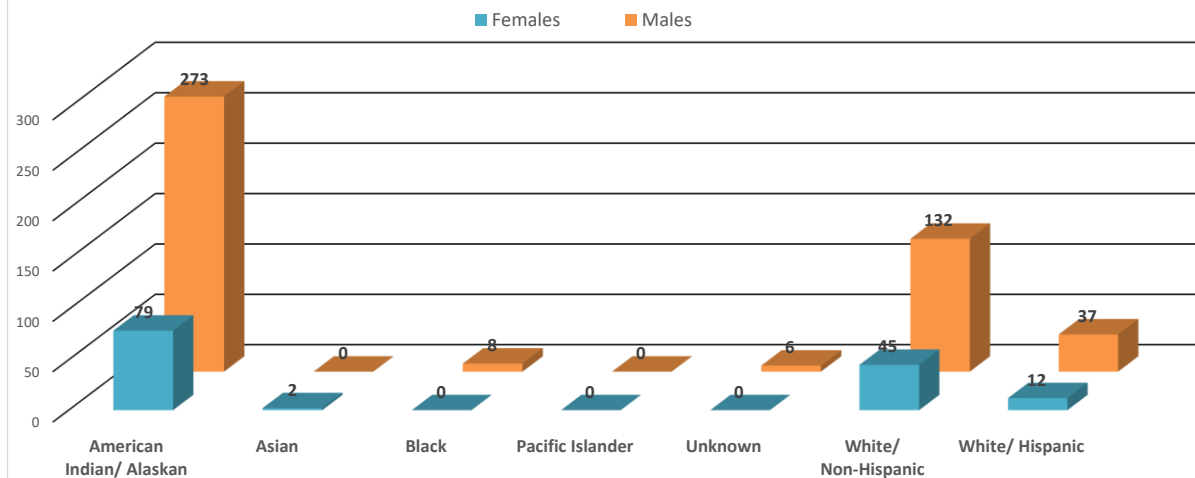


*This data is representative of a single, victim by race/ethnicity, in a single incident only. There may be multiple victims of the same race/ethnicity within that incident, but that data is not captured or displayed above.

**If there are multiple victims within the same incident, that have a different race/ethnicity, those differing races/ethnicities are identified and displayed above.

***If the same individual has been the victim of different incidents, that data is captured and displayed above.

2021 Year To Date: Misdemeanor Arrests by Race



*This data is representative of a single, individual arrest by incident only; these numbers do not reflect the total number of charges from a single incident.

**There may be individuals who have been arrested for different incidents; if the same person is arrested for a different incident (generally different time/date/location), that information is captured and displayed on the above chart.



FLAGSTAFF POLICE DEPARTMENT MONTHLY REPORT FEBRUARY

	FEBRUARY	Y.T.D. 2021	Y.T.D. 2020	% CHANGE
CALLS FOR SERVICE (TOTAL)	5,341	11,877	11,838	0.3%
1. Police	2,824	6,171	6,393	-3.5%
2. Sheriff	1,182	2,741	2,522	8.7%
3. City Fire	1,155	2,511	2,529	-0.7%
4. Rural Fire	172	421	375	12.3%
5. Forest Service	7	29	16	81.3%
6. US NPS	1	4	3	
-	-	-	-	
REPORTS TAKEN (TOTAL)	1,254	2,603	3,120	-16.6%
1. Misdemeanor	536	1,090	1,496	-27.1%
2. Felony	236	463	466	-0.6%
3. Incident	482	1,050	1,158	-9.3%
Accident	174	433	431	0.5%
Incident - no report	1,570	3,568	3,273	9.0%
Short Form Reports	16	36	75	-52.0%
Violent Crimes	20	42	57	-26.3%
Property Crimes	110	221	379	-41.7%
-	-	-	-	
ARRESTS (TOTAL)	342	704	1,136	-38.0%
1. Misdemeanor arrests	292	594	950	-37.5%
2. Felony Arrests	50	110	186	-40.9%
In-Custody Bookings	273	573	962	-40.4%
Juvenile Arrests	4	10	17	-41.2%
Juvenile Referrals	5	12	32	-62.5%
Warrant Arrests	30	43	164	-73.8%
-	-	-	-	
TRAFFIC ACCIDENTS (TOTAL)				
Includes Private Property	174	433	431	0.5%
1. Non-Injury Accidents	148	387	388	-0.3%
2. Injury Accidents	25	45	43	4.7%
3. Fatal Accidents	1	1	0	
Private Property Accidents	54	123	126	-2.4%
DUI Related Accidents	6	15	17	-11.8%
-	-	-	-	
CITATIONS ISSUED (TOTAL)	579	1,184	2,106	-43.8%
1. Traffic	401	821	1,184	-30.7%
D.U.I.'s	40	85	92	-7.6%
2. Criminal (Non-Traffic)	178	363	922	-60.6%
-	-	-	-	
WARNING & REPAIR ORDERS	785	1,689	1,986	-15.0%
-	-	-	-	
FIELD I.D. CARDS	582	1,322	1,621	-18.4%
-	-	-	-	
PI CONTACTS	167	362	525	-31.0%
-	-	-	-	
DETECTIVES				
1. Cases Assigned	272	519	577	-10.1%
2. Cases Cleared	107	223	379	-41.2%
3. Clearance Rate	39.3%	43.0%	65.7%	-22.7%
-	-	-	-	
DOMESTIC VIOLENCE				
1. Incidents Reported	103	266	273	-2.6%
a. Misdemeanor	92	227	220	3.2%
b. Felony	11	39	53	-26.4%
2. Arrests	37	105	128	-18.0%



FLAGSTAFF POLICE DEPARTMENT MONTHLY REPORT
February 2021

	FEBRUARY	Y.T.D. 2021	Y.T.D. 2020	% CHANGE
COMMUNITY RELATIONS & TRAINING				
1. Public Speaking Presentations Includes Media Releases	115	238	278	-14.4%
2. Training - Total Hours	852	1,512	4,198	-64.0%
Academy	320	624	1,680	-62.9%
Field Training	320	624	1,344	-53.6%
Advance Officer Training	212	264	1,174	-77.5%
3. Volunteer Hours	145	254	298	-15.0%
4. Community Support Mtg.	50	88	99	-11.1%
ANIMAL CONTROL (PATROL)				
1. Impounds	22	42	47	-10.6%
2. Citations	-	-	-	0.0%
PATROL HOURS IN FIELD	9,614	20,216	21,045	-3.9%

PERSONNEL	Field Operations	Support Services		
1. Authorized Strength	119	57		
2. Actual Strength	107	47		
3. Resignations or Terminations	2	1		
4. New Hires	3	1		