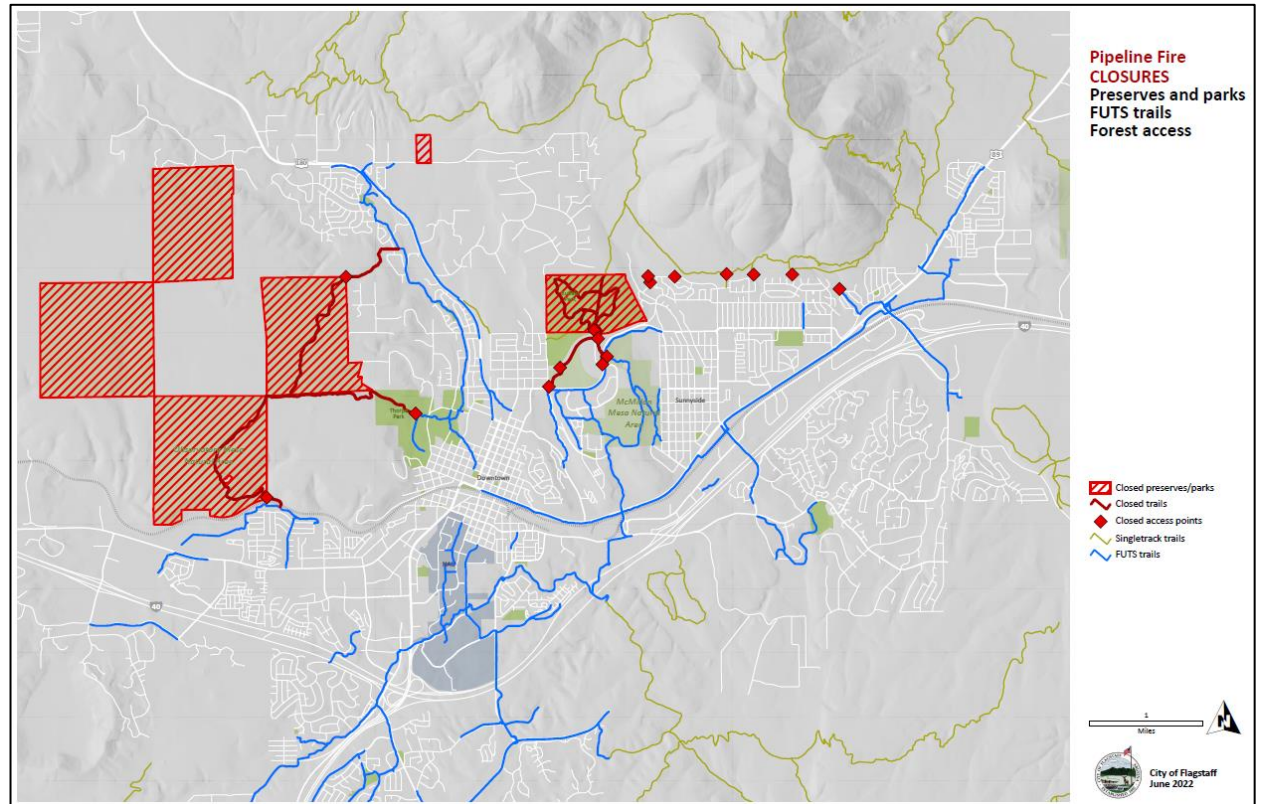
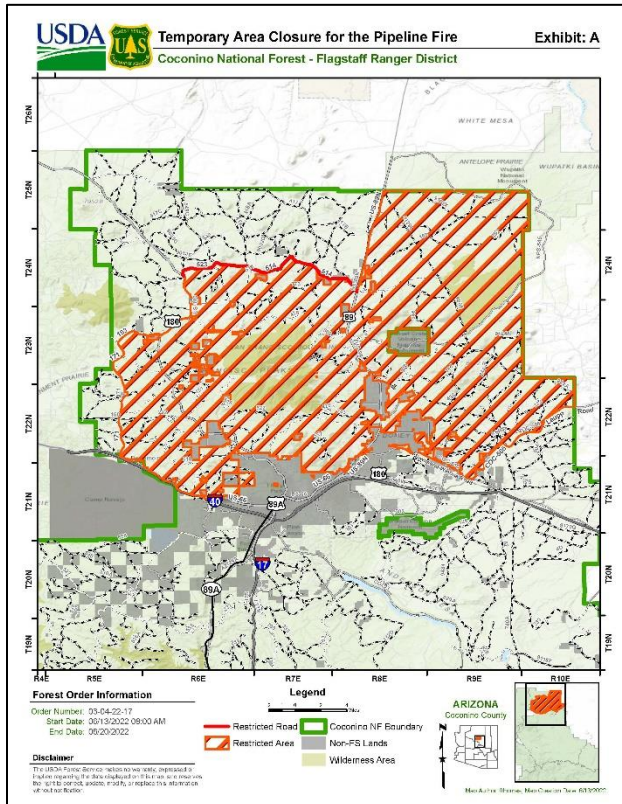


Pipeline Fire Closure



Closure Areas: Observatory Mesa Natural Area, Schultz Creek Natural Area, Buffalo Park, Cinder Lake Landfill, and FUTS entrances into the National Forest due to Pipeline Fire

Please visit the United States Forest Service website for more information on the boundaries of the Temporary Closure Area:
<https://www.fs.usda.gov/alerts/coconino/alerts-notice/?aid=73615>

Refer to Coconino County's Pipeline Fire website for up-to-date information: <https://www.coconino.az.gov/2926/Pipeline-Fire>