

CompStat Report

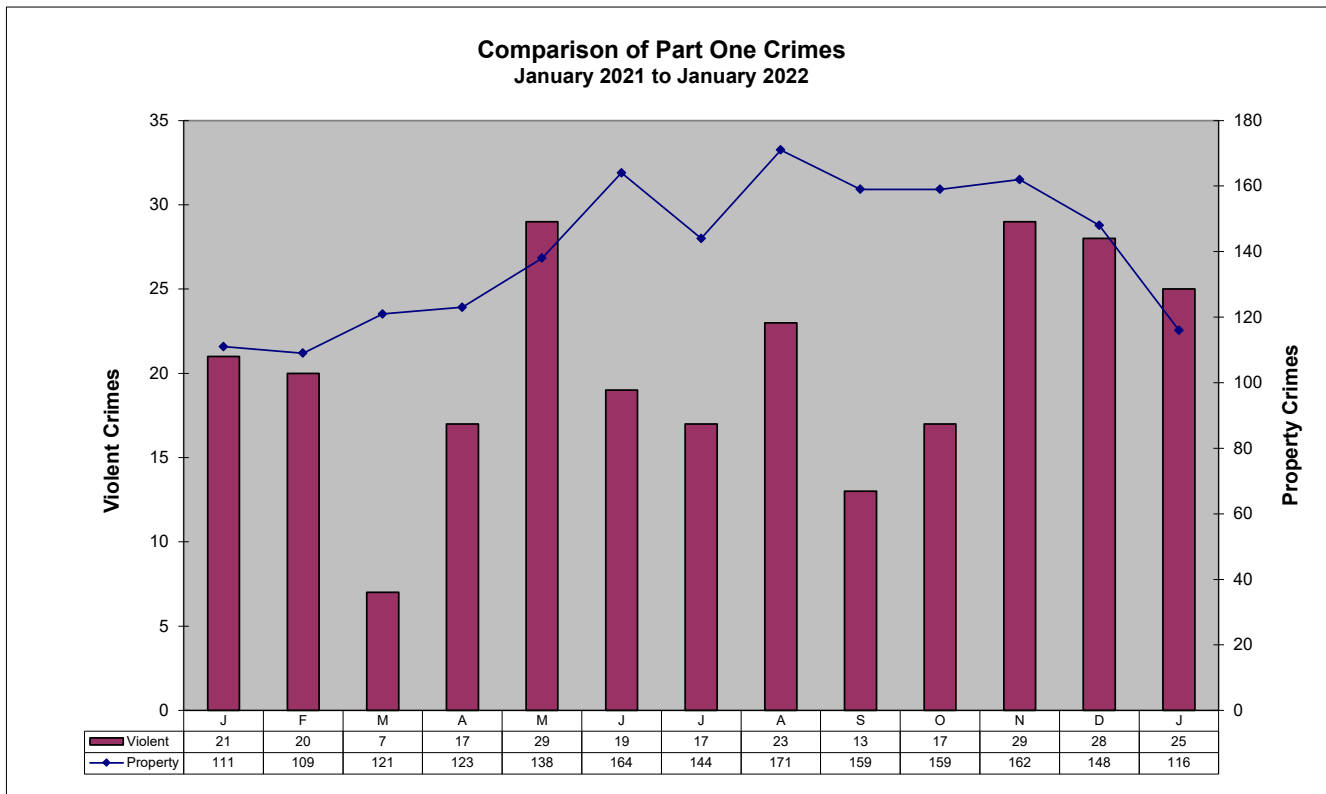
FLAGSTAFF POLICE DEPARTMENT
2022



ad honorem

Part One Crime Summary January 2022

CRIME TYPE	Oct	Nov	Dec	Jan	YTD		%	CLEARED	% CLEARED	
					2022	2021	Change	2022	2022	2021
HOMICIDE*	0	0	0	1	1	0	100%	0	0%	0%
SEX OFFENSES*	6	9	7	9	9	9	0%	10	111%	33%
SEX ASSAULTS	4	6	3	4	4	6	-33%	5	125%	33%
ROBBERY*	1	3	4	2	2	4	-50%	0	0%	0%
AGG ASSAULT*	10	17	17	13	13	8	63%	9	69%	63%
BURGLARY	13	1	18	7	7	9	-22%	4	57%	0%
LARC THEFT	170	154	125	93	93	94	-1%	101	0%	37%
GTA	8	7	5	12	12	8	50%	5	0%	38%
VIOLENT*	17	29	28	25	25	21	19%	19	76%	38%
PROPERTY	159	162	148	116	116	111	5%	107	92%	32%
GRAND TOTAL	176	191	176	141	141	132	7%	126	89%	33%
ARSON	0	0	0	4	4	0	400%	2	50%	0%

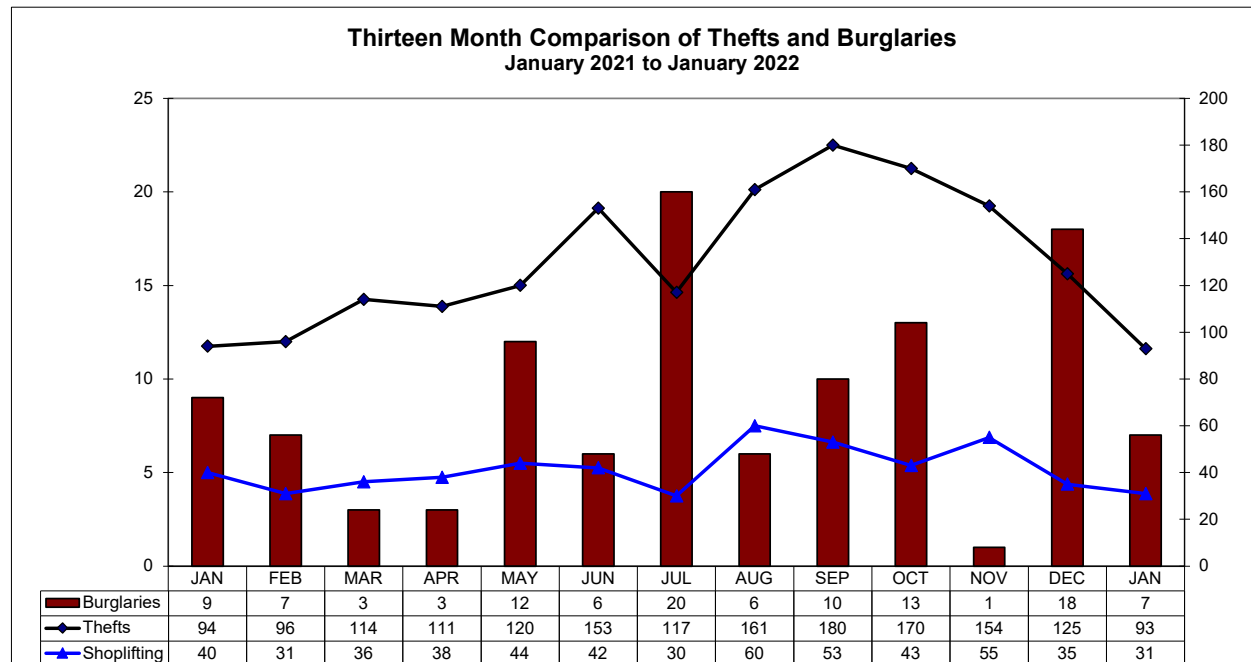
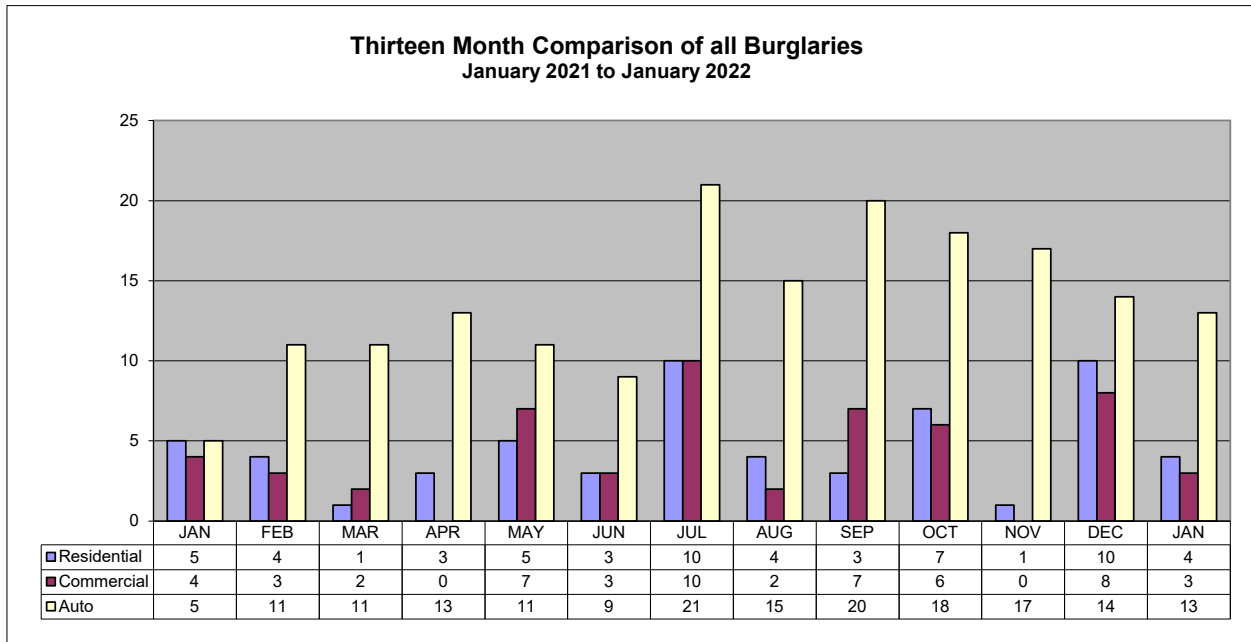


Patrol Activity / Goals

January 2022

ACTIVITY TYPE	Sept	Oct	Nov	Dec	Jan	YTD 2022	YTD 2021	% change
Robberies	1	4	6	3	2	2	4	-50%
Total Burglaries	10	13	1	18	7	7	9	-22%
Res Burglaries	7	10	17	17	4	4	5	-20%
Comm Burglaries	3	7	1	10	3	3	4	-25%
Auto Burglaries	7	6	-	8	13	13	5	160%
Shoplifting	53	43	55	35	31	31	40	-23%
Citations/Warnings	809	858	762	648	933	933	1,336	-30%
DUI Arrests	44	50	46	34	38	38	49	-22%
Collisions	271	284	179	256	195	195	362	-46%

NOTE: In addition to the 38 DUI Arrests, there are 21 pending blood results.

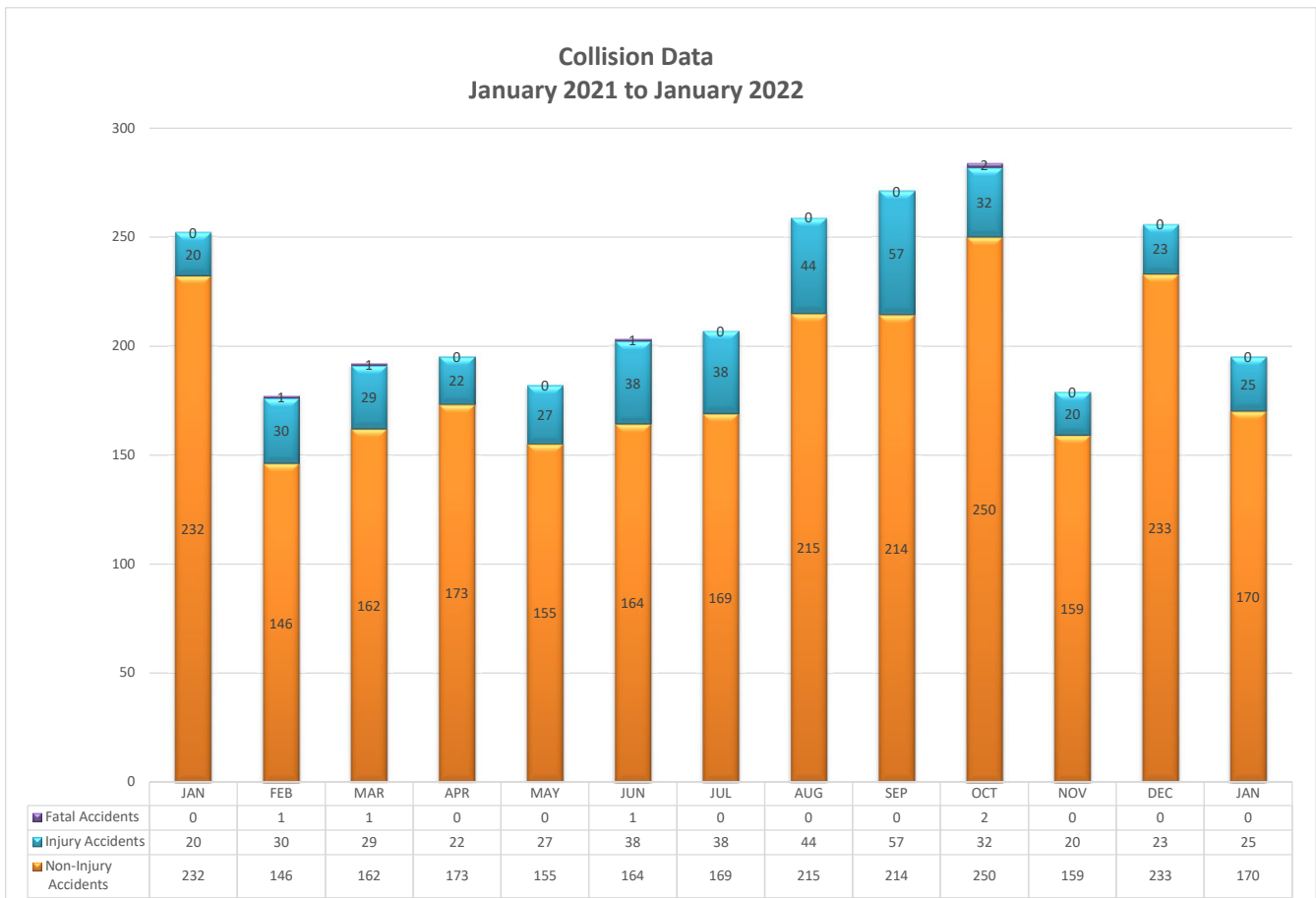


TRAFFIC DATA

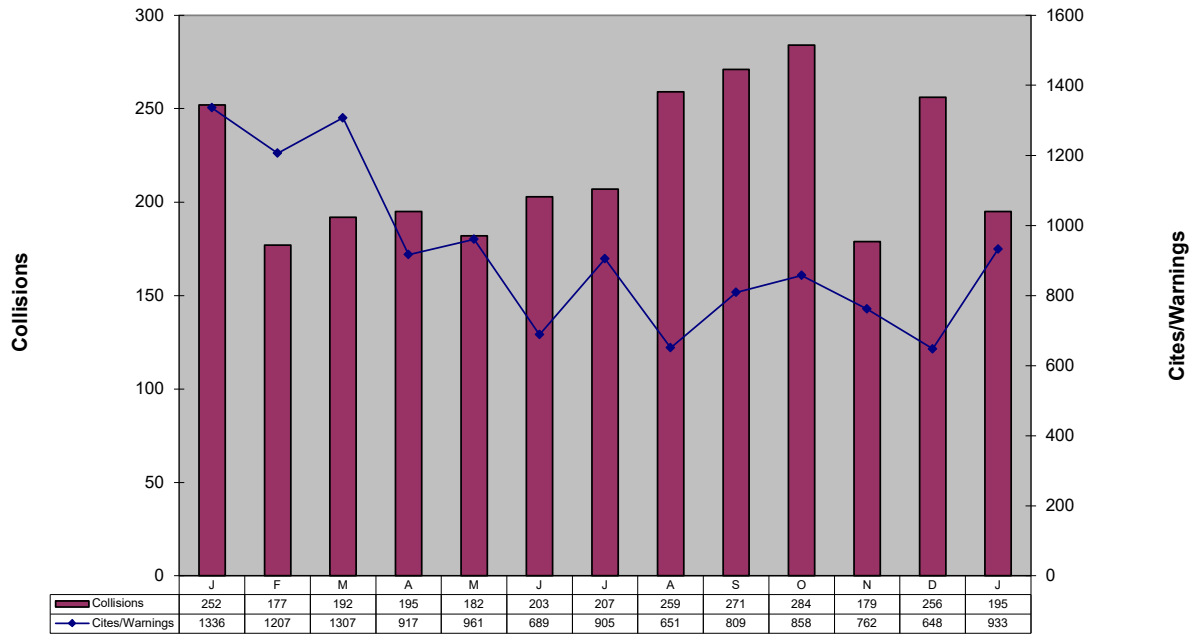
January 2022

ACTIVITY TYPE	Sept	Oct	Nov	Dec	Jan	YTD 2021	YTD 2022	% Change
	Non-Injury Collisions	214	250	159	233	170	232	170
Injury Collisions	57	32	20	23	25	20	25	25%
Fatal Collisions	0	2	0	0	0	0	0	0%
Private Property Collisions	84	52	50	60	60	69	60	-13%
DUI Related Collisions	9	9	8	6	4	8	4	-50%
DUI Arrests (Total)	44	50	46	34	38	49	38	-22%
DUI Arrests (Alcohol)	43	49	46	34	37	47	37	-21%
DUI Arrests (Drugs)	1	1	0	0	1	7	1	-86%
Traffic Citations	268	275	240	184	265	432	265	-39%
Warnings	541	583	522	464	668	904	668	-26%
Parking Citations	15	7	15	61	52	120	52	-57%
All Traffic Stops	1,020	1,122	1,088	962	1,228	1,580	1,228	-22%
Traffic Stops-No Enfor	163	115	123	101	48	139	48	-65%
30-Day Impounds	16	15	16	8	10	20	10	-50%

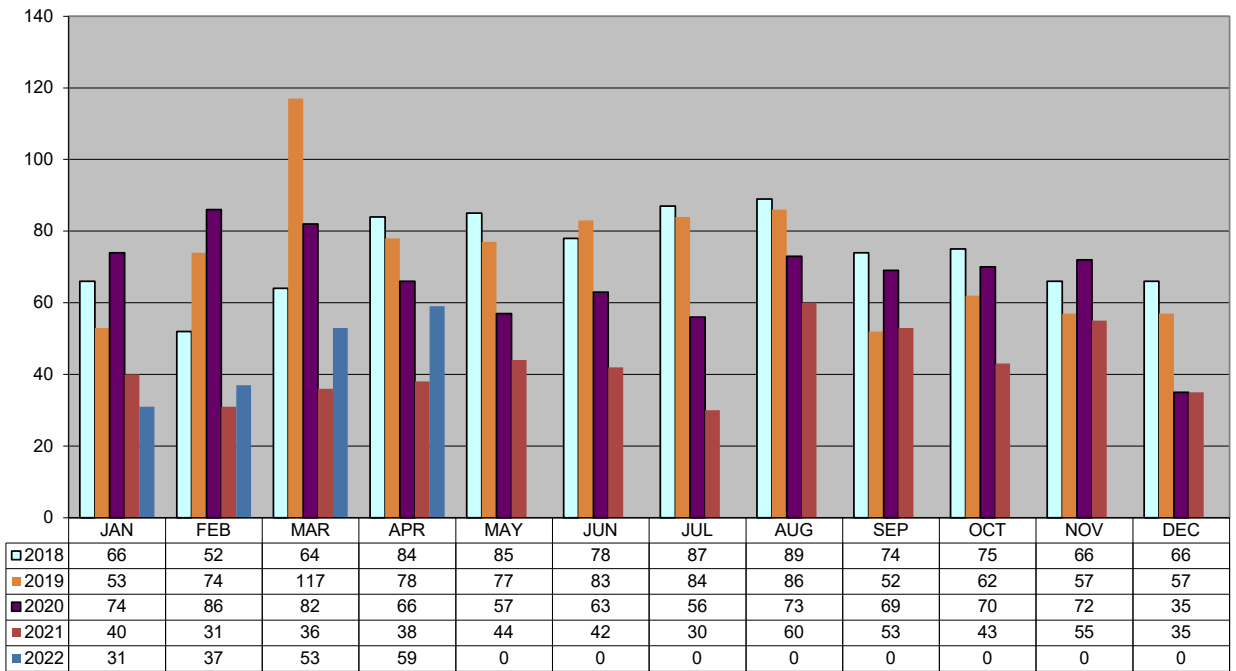
Shaded areas indicate YTD adjustments



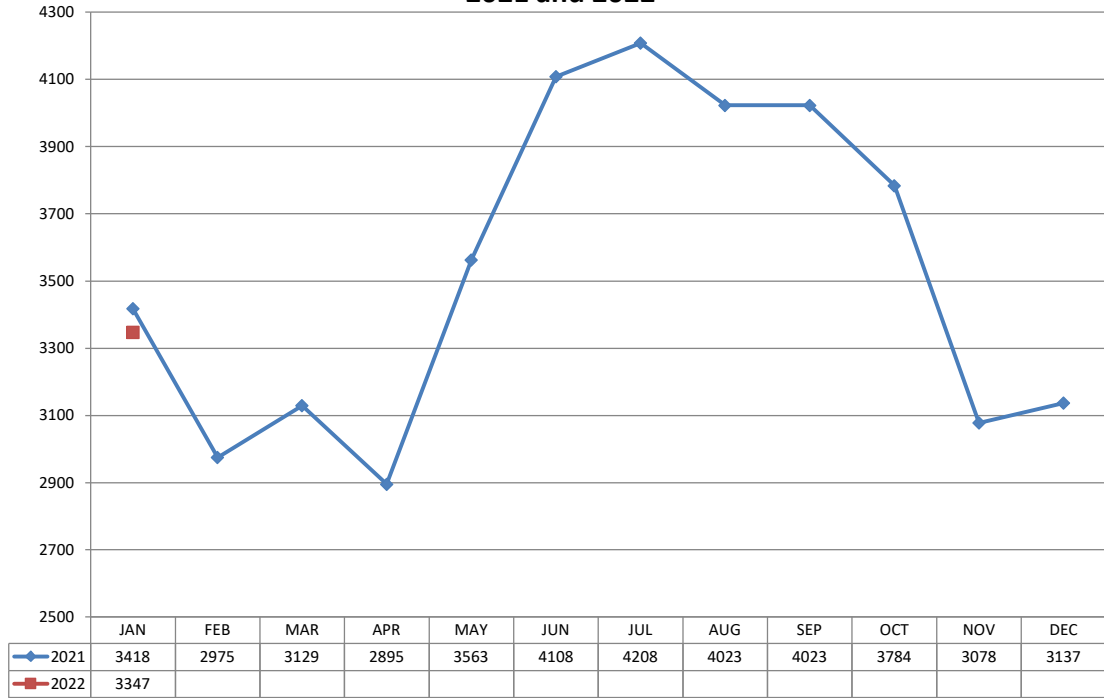
Collision and Traffic Citation/Warning Data January 2021 to January 2022



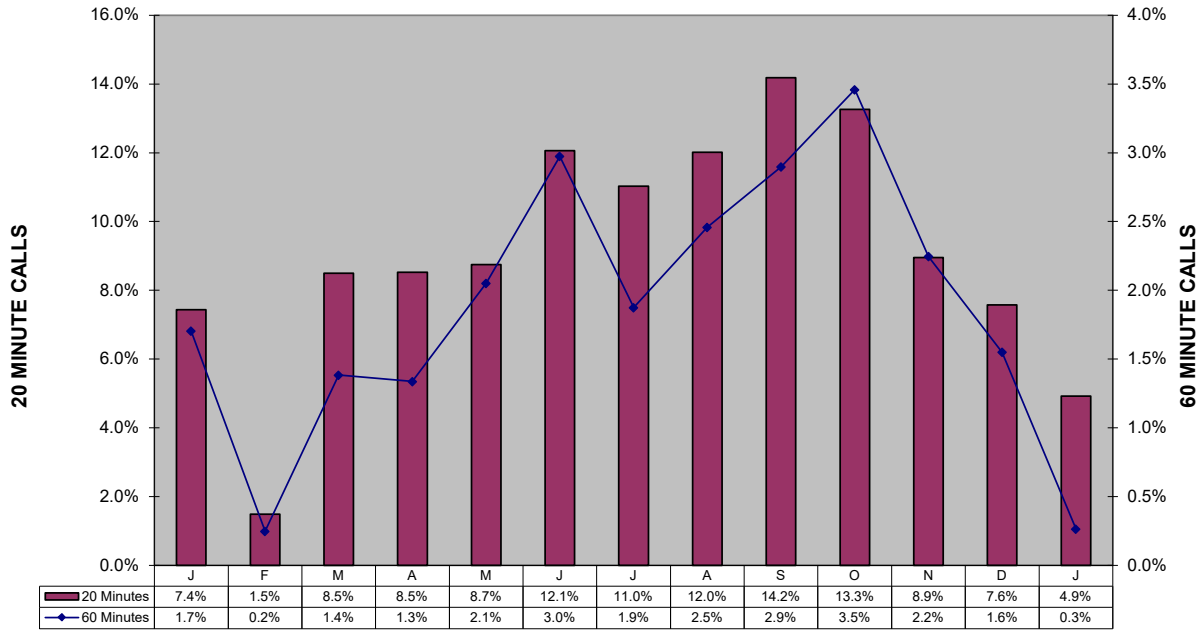
Shoplifting 5-Year Comparison



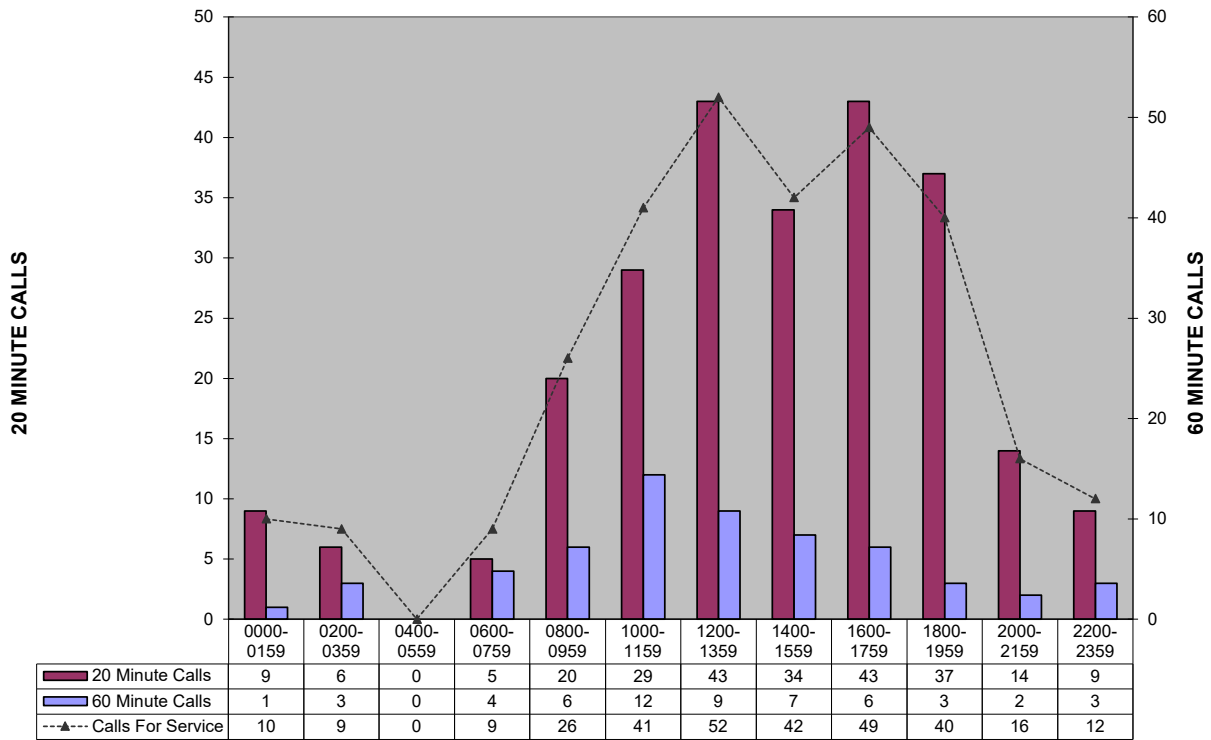
**Police Calls for Service - 12 Month Trend
2021 and 2022**



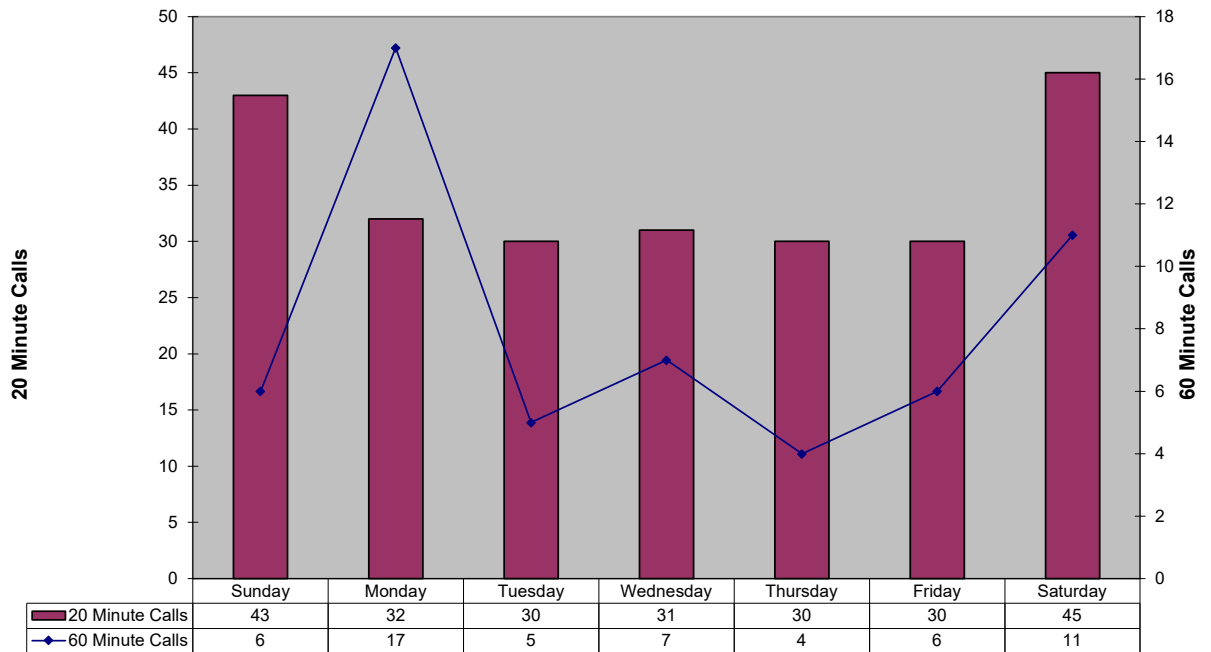
Percent of Police Calls Held 20 and 60 Minutes



20 and 60 Minute Calls Held by Time of Day
(This custom report is being configured)

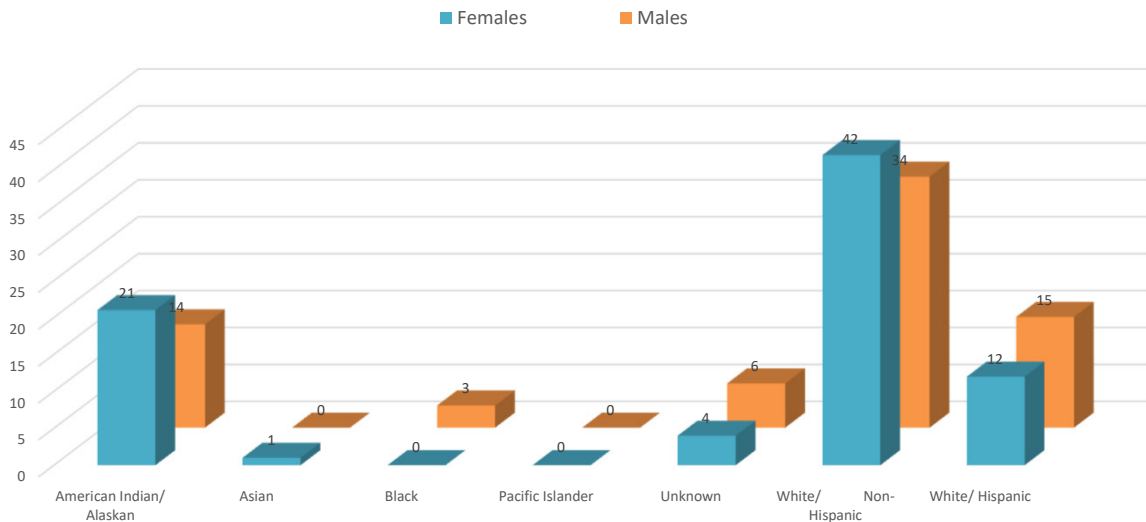


20 and 60 Minute Calls Holding by Day of Week
(This custom report is being configured)



In an effort to be more transparent, we have started presenting arrest and victimization rates year to date. These statistics are currently being impacted by trends related to the Covid -19 pandemic. Flagstaff has seen less visitation and tourism, and a reduction in our college student population. This has positively manifested itself in reduced criminality and arrests in some areas. Our community is one of only a few that has provided additional housing options for homeless populations. This has drawn more homeless individuals to Flagstaff. Unfortunately, we continue to see Native American members of our homeless population over-represented in both arrest and victimization data. Many of these arrests are on those who are not City residents, and many of these arrests are of repeat offenders.

Felony Incidents: Victims by Race

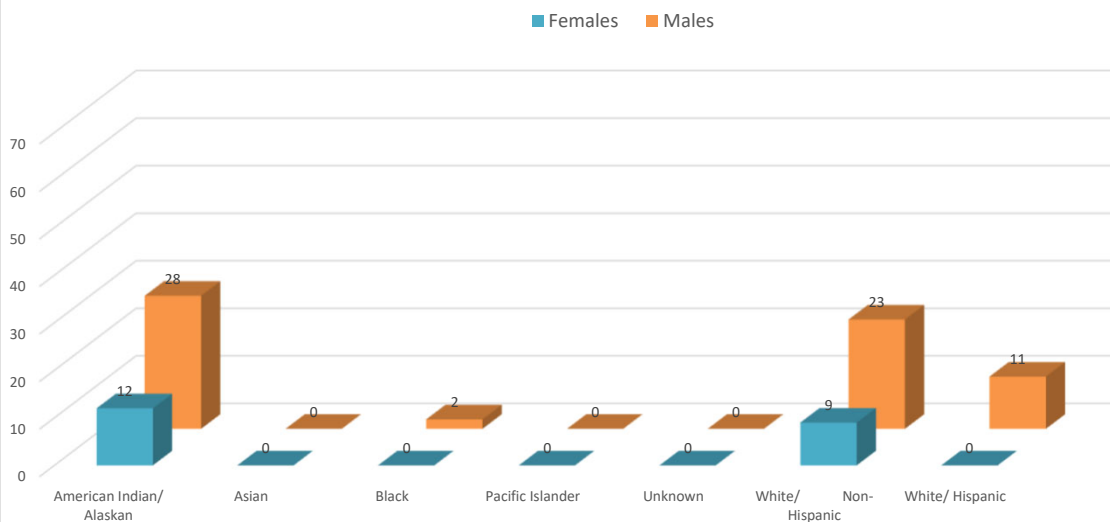


*This data is representative of a single, victim by race/ethnicity, in a single incident only. There may be multiple victims of the same race/ethnicity within that incident, but that data is not captured or displayed above.

**If there are multiple victims within the same incident, that have a different race/ethnicity, those differering races/ethnicities are identified and displayed above.

***If the same individual has been the victim of different incidents, that data is captured and displayed above.

Felony Arrests by Race

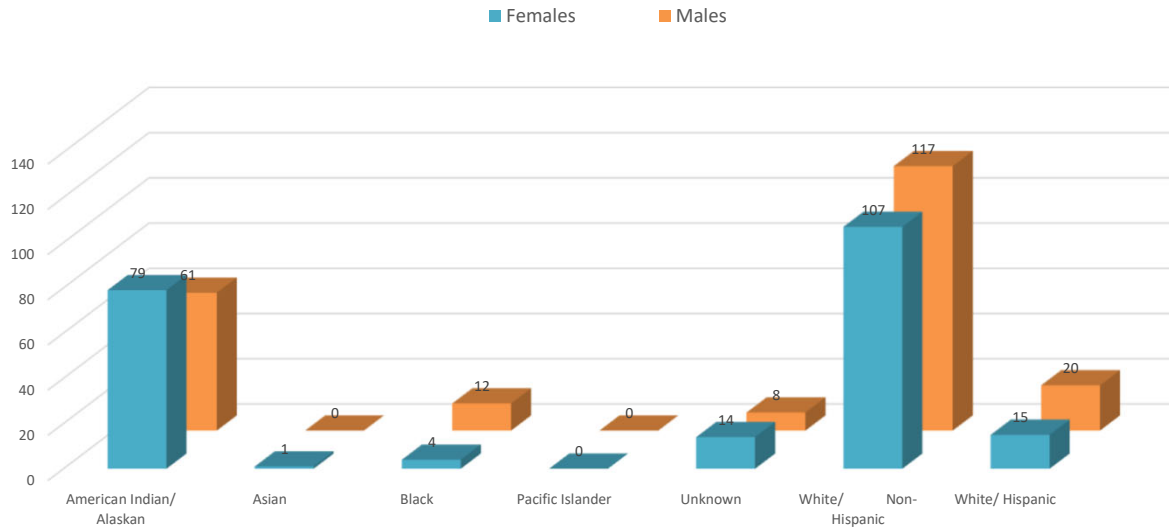


*This data is representative of a single, individual arrest by incident only; these numbers do not reflect the total number of charges from a single incident.

**There may be individuals who have been arrested for different incidents; if the same person is arrested for a different incident (generally different time/date/location), that information is captured and displayed on the above chart.

In an effort to be more transparent, we have started presenting arrest and victimization rates year to date. These statistics are currently being impacted by trends related to the Covid -19 pandemic. Flagstaff has seen less visitation and tourism, and a reduction in our college student population. This has positively manifested itself in reduced criminality and arrests in some areas. Our community is one of only a few that has provided additional housing options for homeless populations. This has drawn more homeless individuals to Flagstaff. Unfortunately, we continue to see Native American members of our homeless population over-represented in both arrest and victimization data. Many of these arrests are on those who are not City residents, and many of these arrests are of repeat offenders.

Misdemeanor Incidents: Victims by Race

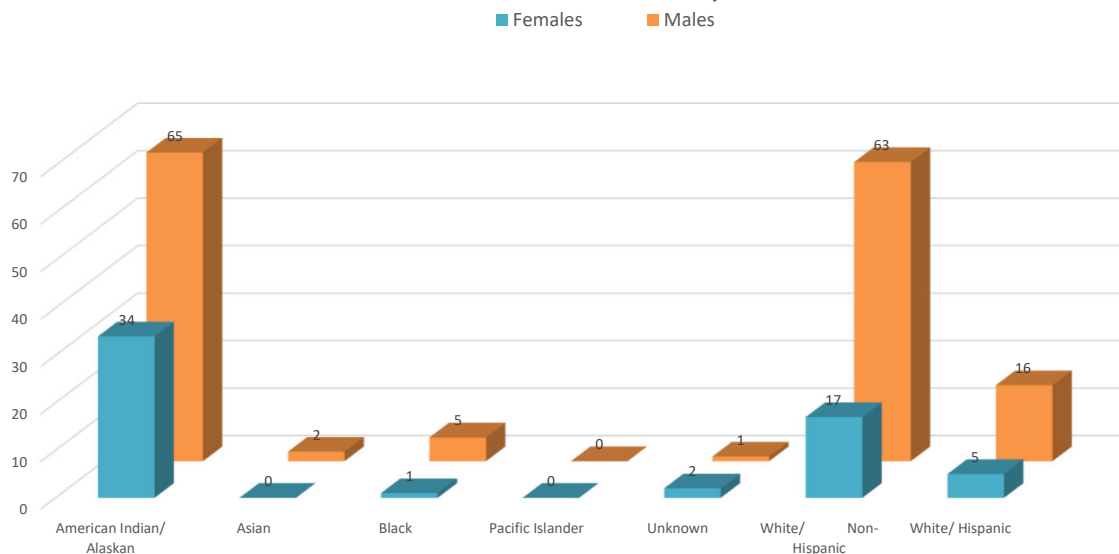


*This data is representative of a single, victim by race/ethnicity, in a single incident only. There may be multiple victims of the same race/ethnicity within that incident, but that data is not captured or displayed above.

**If there are multiple victims within the same incident, that have a different race/ethnicity, those differering races/ethnicities are identified and displayed above.

***If the same individual has been the victim of different incidents, that data is captured and displayed above.

Misdemeanor Arrests by Race



*This data is representative of a single, individual arrest by incident only; these numbers do not reflect the total number of charges from a single incident.

**There may be individuals who have been arrested for different incidents; if the same person is arrested for a different incident (generally different time/date/location), that information is captured and displayed on the above chart.



FLAGSTAFF POLICE DEPARTMENT MONTHLY REPORT January 2022

	JANUARY	Y.T.D. 2022	Y.T.D. 2021	% CHANGE
CALLS FOR SERVICE (TOTAL)	5,816	5,816	6,536	-11.0%
1. Police	3,030	3,030	3,347	-9.5%
2. Sheriff	1,320	1,320	1,559	-15.3%
3. City Fire	1,232	1,232	1,356	-9.1%
4. Rural Fire	233	233	249	-6.4%
5. Forest Service	1	1	22	-95.5%
6. US NPS	-	-	3	-100.0%
REPORTS TAKEN (TOTAL)	1,488	1,488	1,349	10.3%
1. Misdemeanor	609	609	554	9.9%
2. Felony	215	215	227	-5.3%
3. Incident	664	664	568	16.9%
Accident	195	195	252	-22.6%
Incident - no report	1,542	1,542	1,792	-14.0%
Short Form Reports	8	8	20	-60.0%
Violent Crimes	25	25	21	19.0%
Property Crimes	116	116	111	4.5%
ARRESTS (TOTAL)	313	313	362	-13.5%
1. Misdemeanor arrests	228	228	302	-24.5%
2. Felony Arrests	85	85	60	41.7%
In-Custody Bookings	174	174	300	-42.0%
Juvenile Arrests	5	5	6	-16.7%
Juvenile Referrals	5	5	7	-28.6%
Warrant Arrests	19	19	13	46.2%
TRAFFIC ACCIDENTS (TOTAL)				
Includes Private Property	195	195	252	-22.6%
1. Non-Injury Accidents	170	170	232	-26.7%
2. Injury Accidents	25	25	20	25.0%
3. Fatal Accidents	0	0	0	
Private Property Accidents	60	60	69	-13.0%
DUI Related Accidents	4	4	8	-50.0%
CITATIONS ISSUED (TOTAL)	418	418	624	-33.0%
1. Traffic	265	265	432	-38.7%
D.U.I.'s	38	38	49	-22.4%
2. Criminal (Non-Traffic)	153	153	192	-20.3%
WARNING & REPAIR ORDERS	668	668	904	-26.1%
FIELD I.D. CARDS	434	434	740	-41.4%
PI CONTACTS	103	103	195	-47.2%
DETECTIVES				
1. Cases Assigned	278	278	247	12.6%
2. Cases Cleared	150	150	116	29.3%
3. Clearance Rate	54.0%	54.0%	47.0%	7.0%
DOMESTIC VIOLENCE				
1. Incidents Reported	185	185	163	13.5%
a. Misdemeanor	146	146	135	8.1%
b. Felony	39	39	28	39.3%
2. Arrests	65	65	68	-4.4%

Shaded areas indicate YTD adjustments



FLAGSTAFF POLICE DEPARTMENT MONTHLY REPORT
January 2022

	JANUARY	Y.T.D. 2022	Y.T.D. 2021	% CHANGE
COMMUNITY RELATIONS & TRAINING				
1. Public Speaking Presentations Includes Media Releases	106	106	123	-13.8%
2. Training - Total Hours	1,964	1,964	555	253.9%
Academy	760	760	224	239.3%
Field Training	592	592	304	94.7%
Advance Officer Training	612	612	27	2166.7%
3. Volunteer Hours	54	54	124	-56.3%
4. Community Support Mtg.	20	20	38	-47.4%
ANIMAL CONTROL (PATROL)				
1. Impounds	10	10	20	-50.0%
2. Citations	-	-	-	0.0%
PATROL HOURS IN FIELD	9,944	9,944	10,602	-6.2%

PERSONNEL	Field Operations	Support Services		
1. Authorized Strength	119	57		
2. Actual Strength	102	52		
3. Resignations or Terminations	1	2		
4. New Hires	0	3		

Shaded areas indicate YTD adjustments