

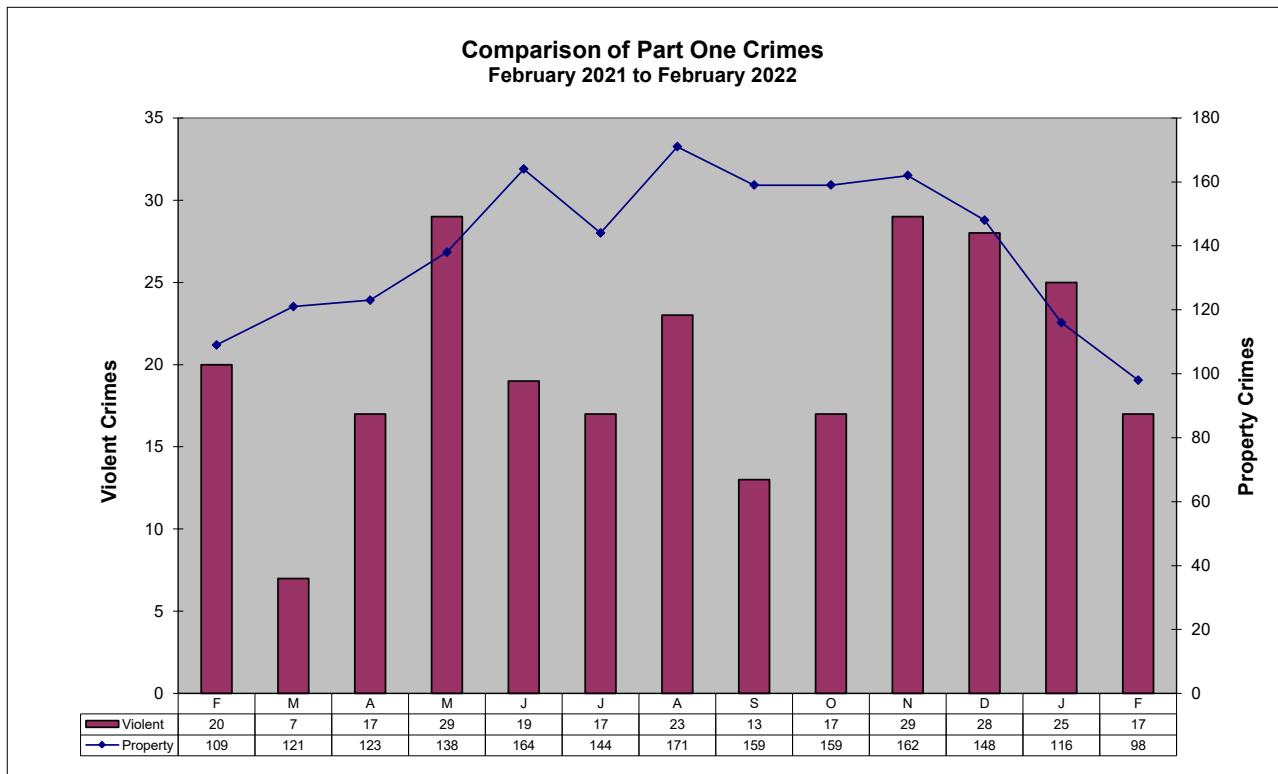
CompStat Report

FLAGSTAFF POLICE DEPARTMENT
FEBRUARY 2022



Part One Crime Summary February 2022

CRIME TYPE	Nov	Dec	Jan	Feb	YTD		%	CLEARED	% CLEARED	
					2022	2021			Change	2022
HOMICIDE*	0	0	1	0	1	0	100%	1	100%	0%
SEX OFFENSES*	9	7	9	9	18	14	29%	16	89%	36%
SEX ASSAULTS	6	3	4	5	9	9	0%	8	89%	56%
ROBBERY*	3	4	2	3	5	9	-44%	2	40%	11%
AGG ASSAULT*	17	17	13	5	18	18	0%	15	83%	72%
BURGLARY	1	18	7	7	14	16	-13%	6	43%	13%
LARC THEFT	154	125	93	85	178	190	-6%	123	69%	28%
GTA	7	5	12	6	18	14	29%	68	33%	50%
VIOLENT*	29	28	25	17	42	41	2%	34	81%	46%
PROPERTY	97	83	116	98	214	220	-3%	131	61%	25%
GRAND TOTAL	191	176	141	115	256	261	-2%	165	64%	28%
ARSON	0	0	4	0	4	1	300%	2	50%	0%



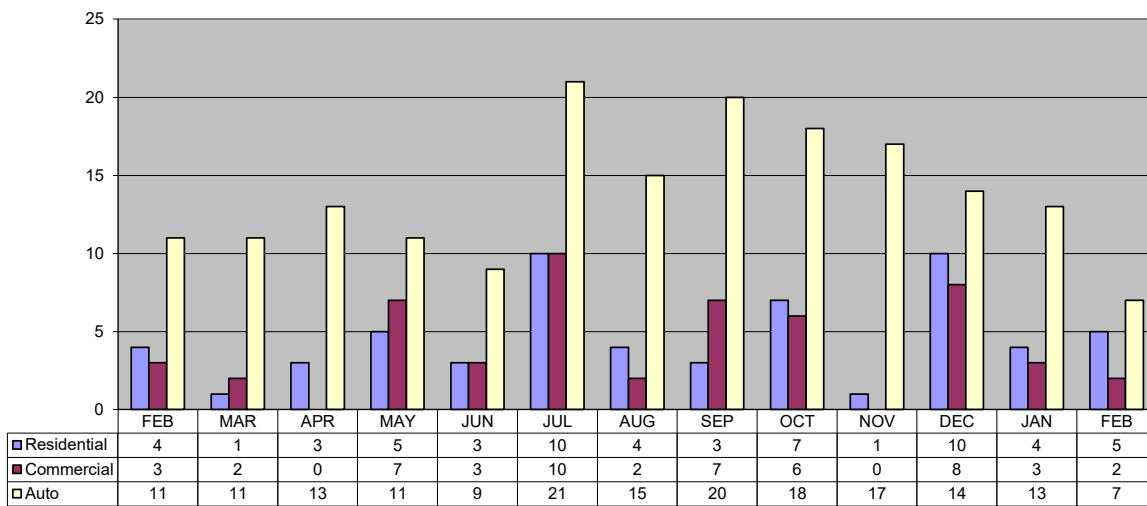
Patrol Activity / Goals

February 2022

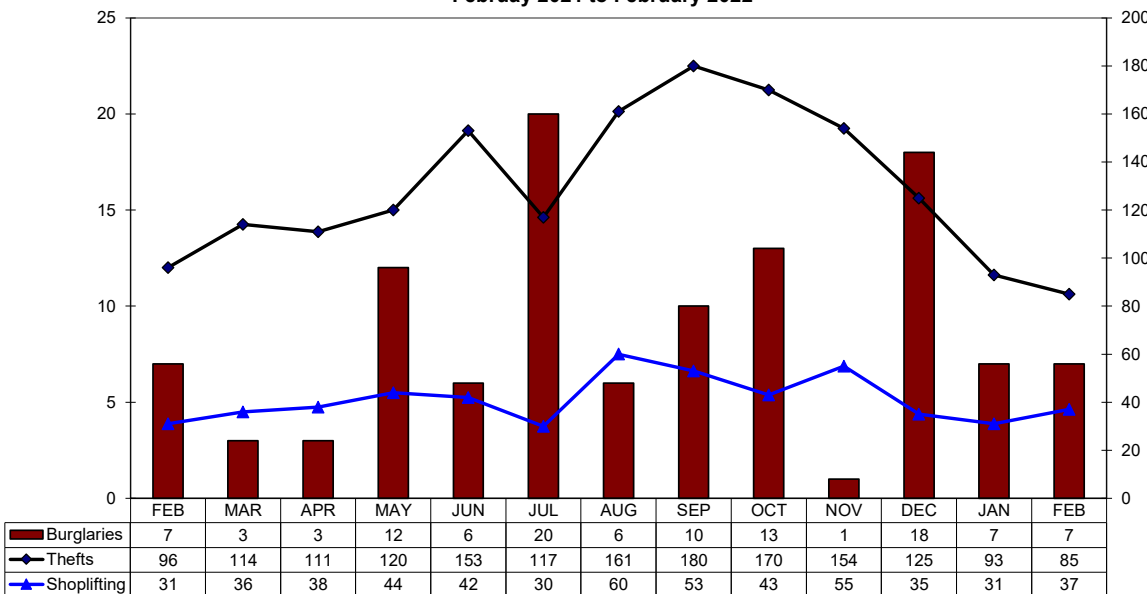
ACTIVITY TYPE	Oct	Nov	Dec	Jan	Feb	YTD 2022	YTD 2021	% change
Robberies	1	3	4	2	3	5	9	-44%
Total Burglaries	13	1	18	7	7	14	16	-13%
Res Burglaries	7	1	10	4	5	9	9	0%
Comm Burglaries	6	-	8	3	2	5	7	-29%
Auto Burglaries	18	17	14	13	7	20	16	25%
Shoplifting	43	55	35	31	37	68	40	70%
Citations/Warnings	858	762	648	933	723	1,656	2,543	-35%
DUI Arrests	50	46	34	38	33	71	94	-24%
Collisions	284	179	256	195	212	407	429	-5%

NOTE: In addition to the 33 DUI Arrests, there are 10 pending blood results.

Thirteen Month Comparison of all Burglaries
February 2021 to February 2022



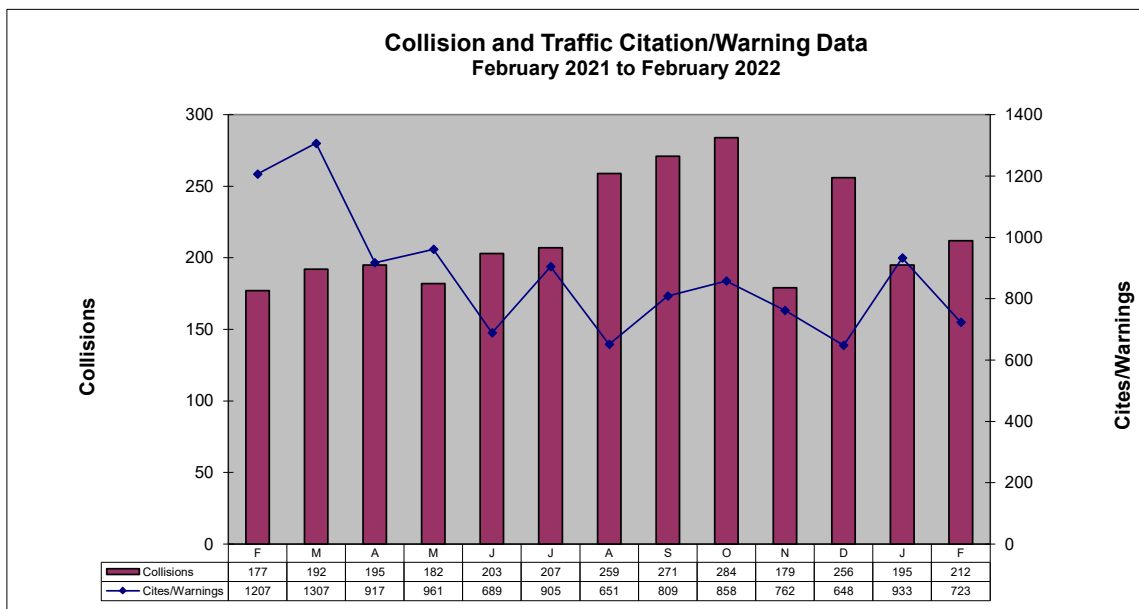
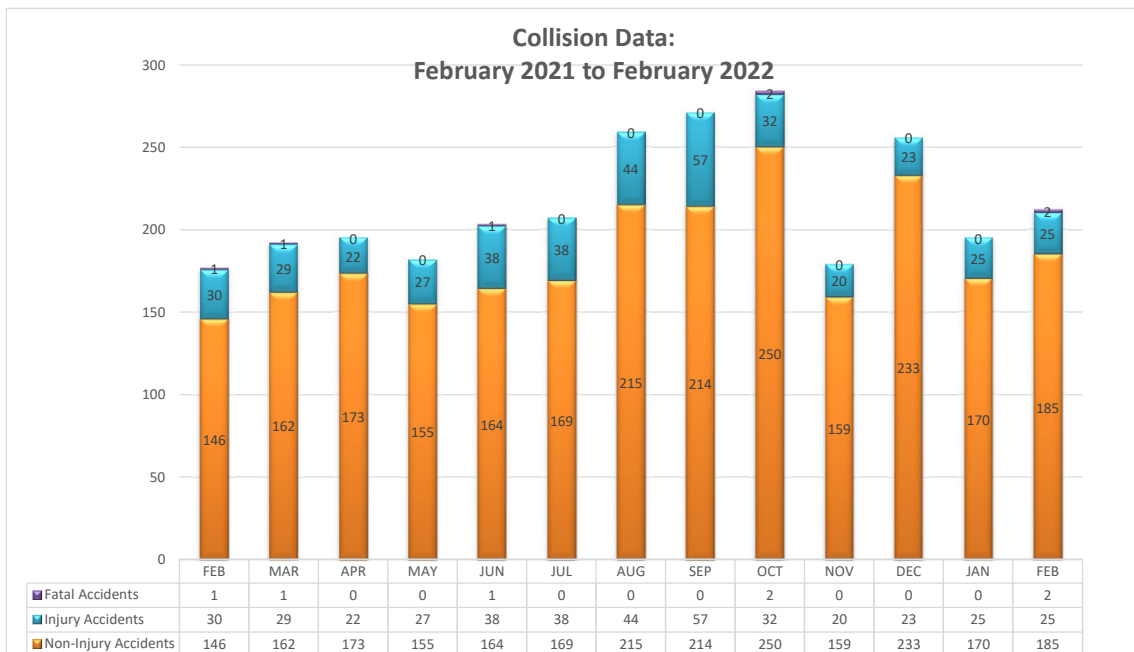
Thirteen Month Comparison of Thefts and Burglaries
February 2021 to February 2022



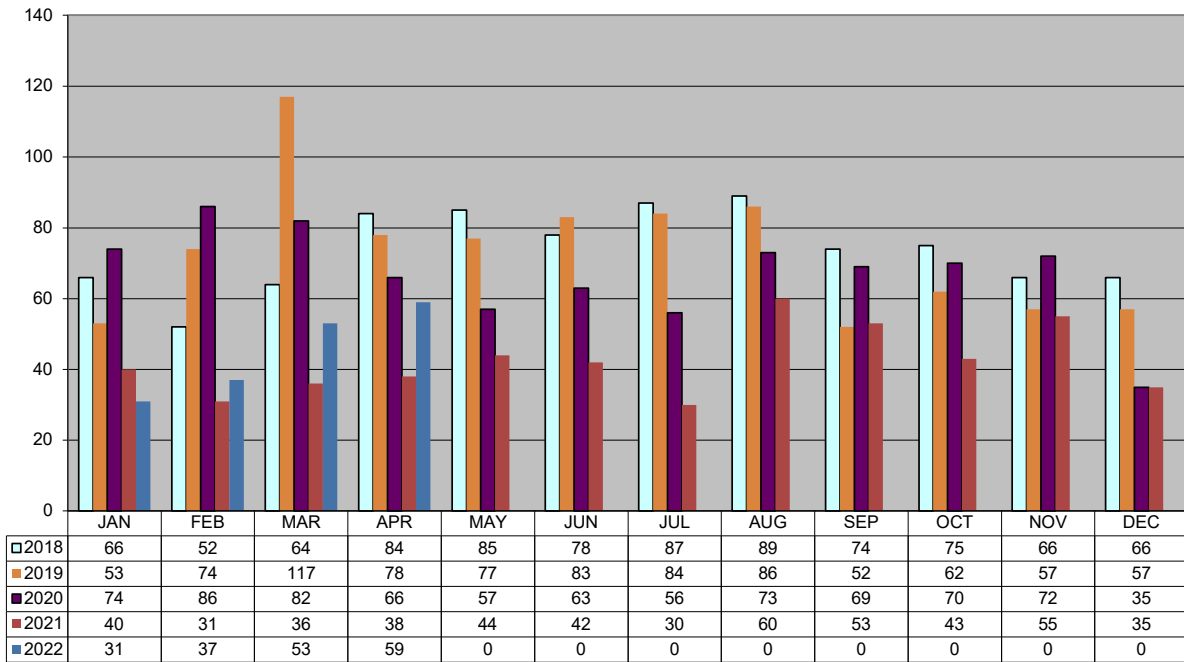
TRAFFIC DATA

February 2022

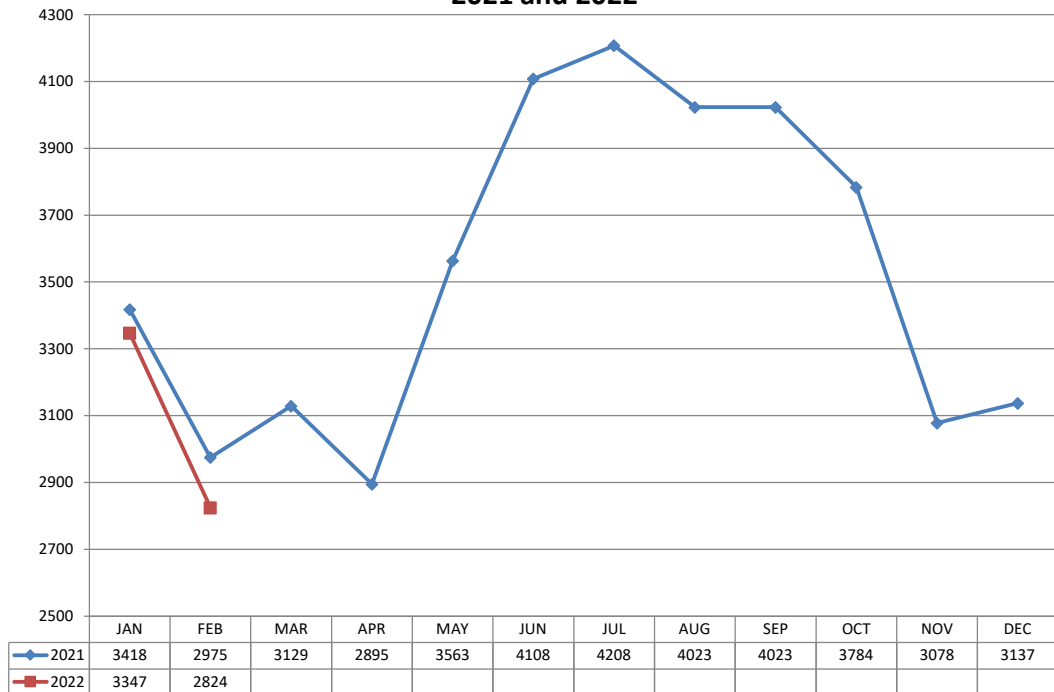
ACTIVITY TYPE	Oct	Nov	Dec	Jan	Feb	YTD	YTD	%
						2022	2021	Change
Non-Injury Collisions	250	159	233	170	185	355	378	-6%
Injury Collisions	32	20	23	25	25	50	50	0%
Fatal Collisions	2	0	0	0	2	2	1	100%
Private Property Collisions	52	50	60	60	55	115	122	-6%
DUI Related Collisions	9	8	6	4	8	12	15	-20%
DUI Arrests (Total)	50	46	34	38	33	71	94	-24%
DUI Arrests (Alcohol)	49	46	34	37	31	68	86	-21%
DUI Arrests (Drugs)	1	0	0	1	2	3	8	-63%
Traffic Citations	275	240	184	265	198	463	854	-46%
Warnings	583	522	464	668	525	1,193	1,689	-29%
Parking Citations	7	15	61	52	77	129	210	-39%
All Traffic Stops	1,122	1,088	962	1,228	931	2,159	3,092	-30%
Traffic Stops-No Enforcement	115	123	101	48	56	104	237	-56%
30-Day Impounds	15	16	8	10	10	20	32	-38%



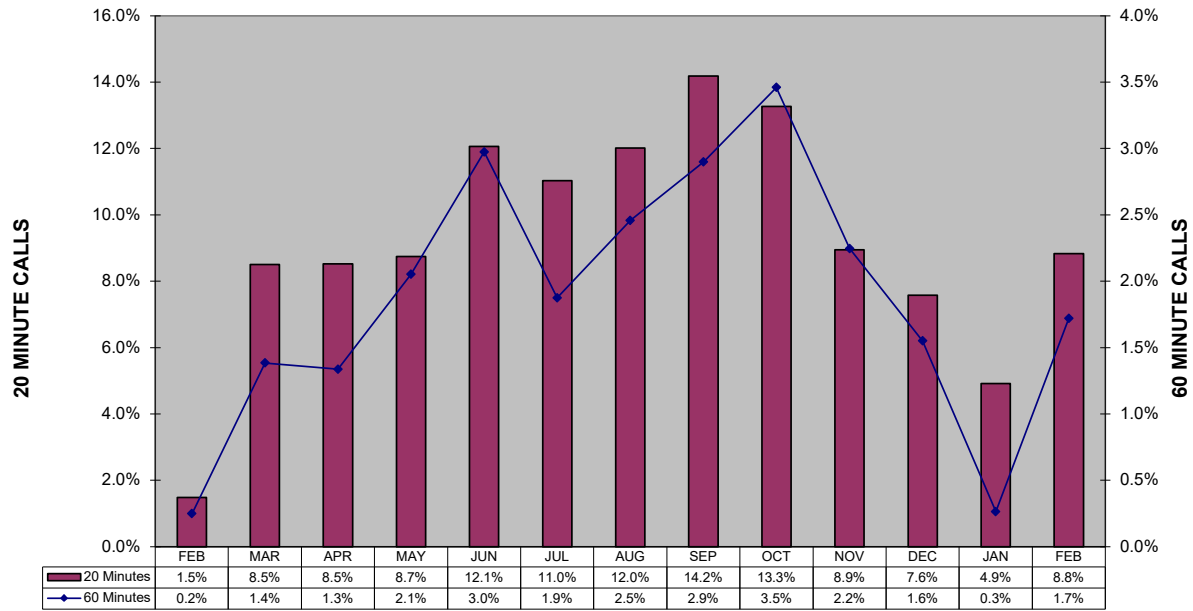
Shoplifting 5-Year Comparison



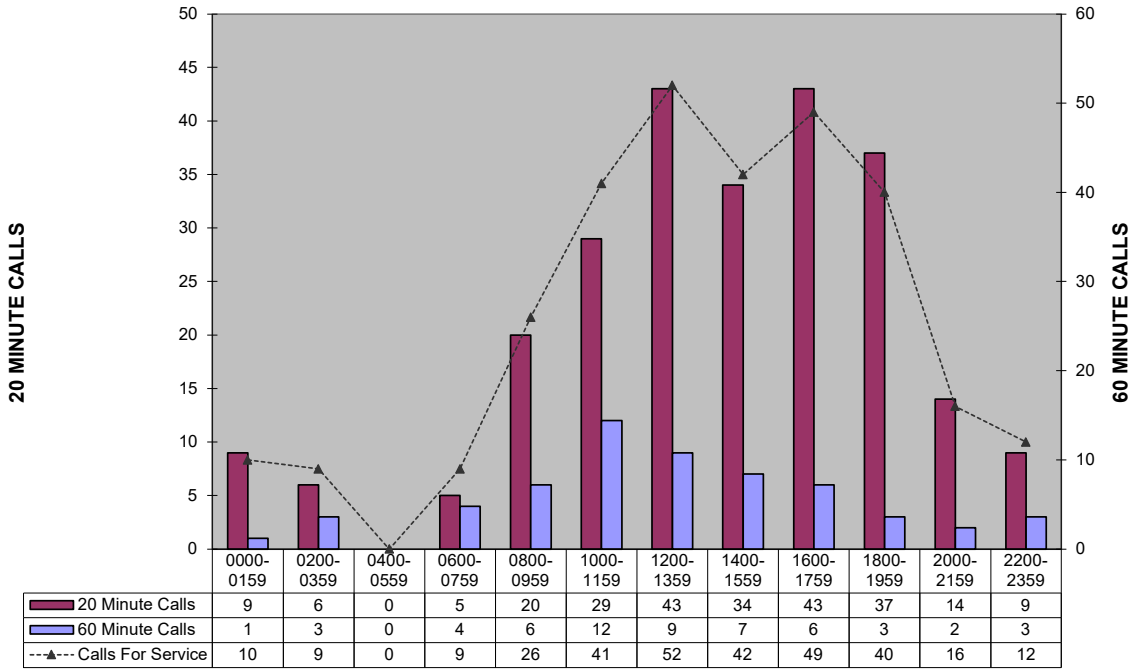
Police Calls for Service - 12 Month Trend 2021 and 2022



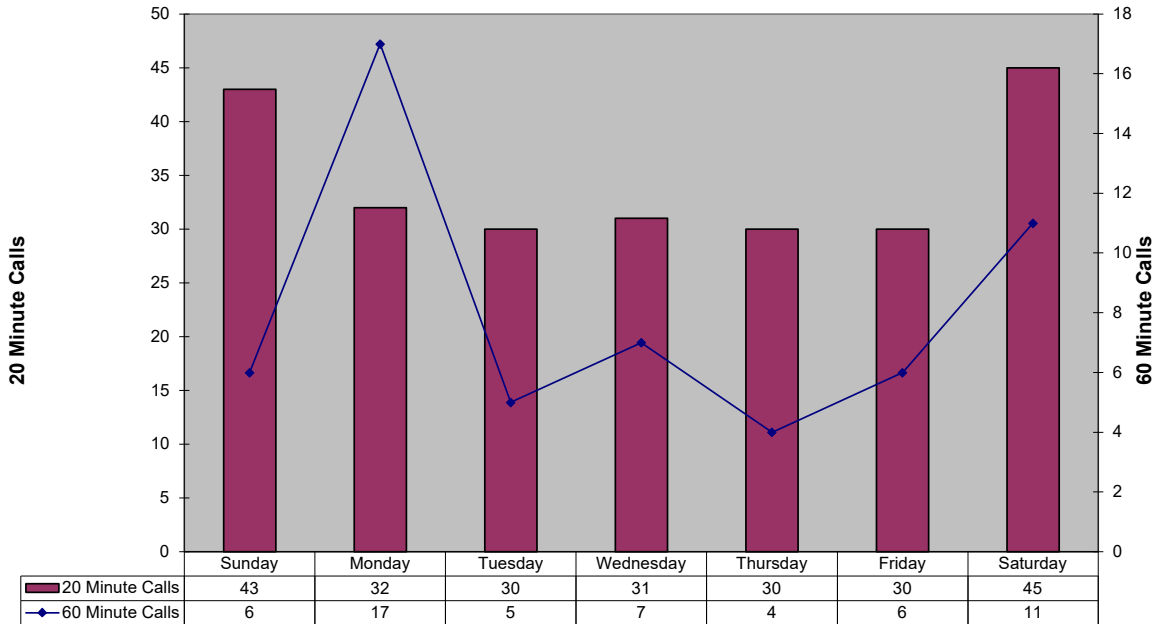
**Percent of Police Calls Held 20 and 60 Minutes
(This custom report is being configured)**



20 and 60 Minute Calls Held by Time of Day
(This custom report is being configured)

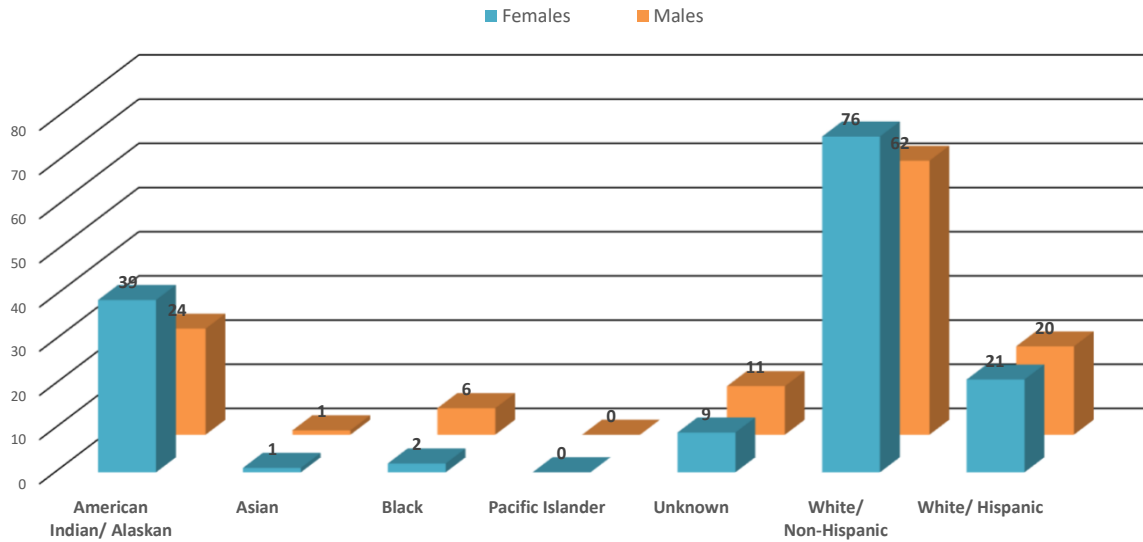


20 and 60 Minute Calls Holding by Day of Week
(This custom report is being configured)



In an effort to be more transparent, we have started presenting arrest and victimization rates year to date. These statistics are currently being impacted by trends related to the Covid -19 pandemic. Flagstaff has seen less visitation and tourism, and a reduction in our college student population. This has positively manifested itself in reduced criminality and arrests in some areas. Our community is one of only a few that has provided additional housing options for homeless populations. This has drawn more homeless individuals to Flagstaff. Unfortunately, we continue to see Native American members of our homeless population over-represented in both arrest and victimization data. Many of these arrests are on those who are not City residents, and many of these arrests are of repeat offenders.

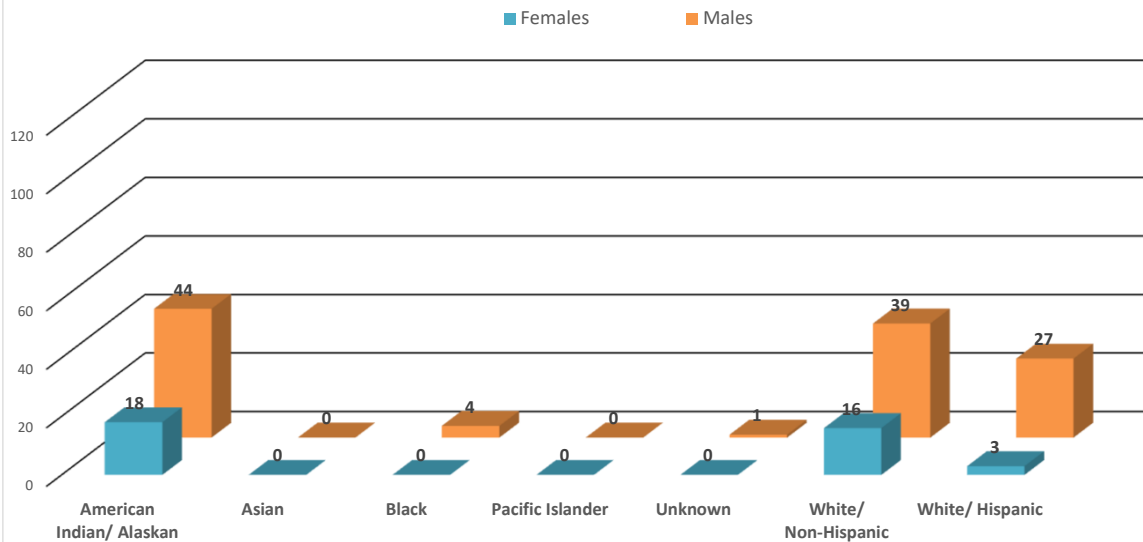
2022 Year To Date: Felony Incidents- Victims by Race



*This data is representative of a single, victim by race/ethnicity, in a single incident only. There may be multiple victims of the same race/ethnicity within that incident, but that data is not captured or displayed above.

**If there are multiple victims within the same incident, that have a different race/ethnicity, those differering races/ethnicities are identified and displayed above.

2022 Year To Date: Felony Arrests by Race

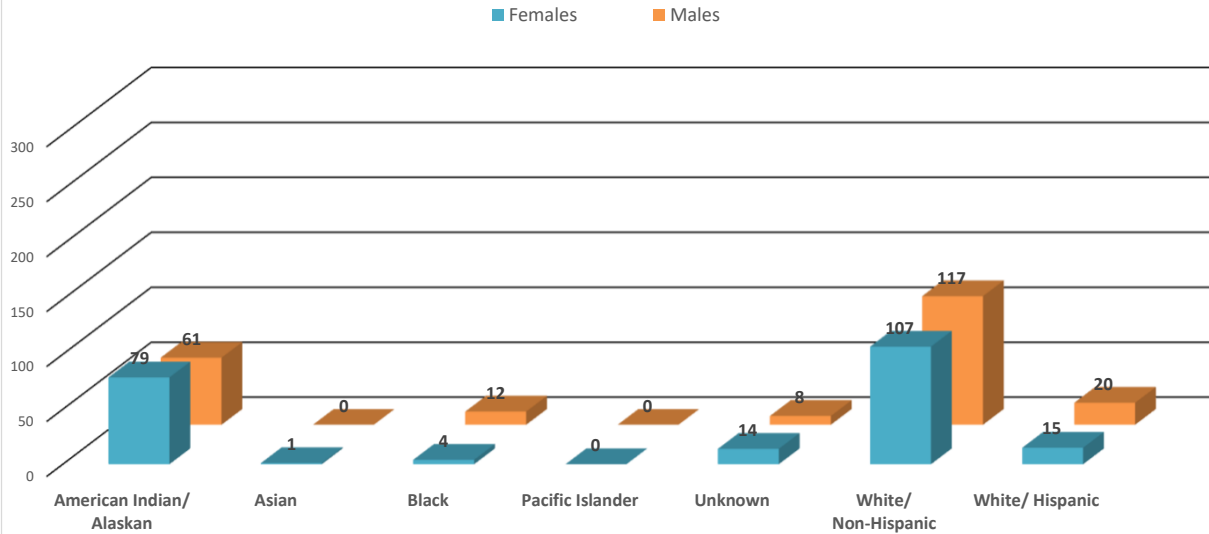


*This data is representative of a single, individual arrest by incident only; these numbers do not reflect the total number of charges from a single incident.

**There may be individuals who have been arrested for different incidents; if the same person is arrested for a different incident (generally different time/date/location), that information is captured and displayed on the above chart.

In an effort to be more transparent, we have started presenting arrest and victimization rates year to date. These statistics are currently being impacted by trends related to the Covid -19 pandemic. Flagstaff has seen less visitation and tourism, and a reduction in our college student population. This has positively manifested itself in reduced criminality and arrests in some areas. Our community is one of only a few that has provided additional housing options for homeless populations. This has drawn more homeless individuals to Flagstaff. Unfortunately, we continue to see Native American members of our homeless population over-represented in both arrest and victimization data. Many of these arrests are on those who are not City residents, and many of these arrests are of repeat offenders.

2022 Year To Date: Misdemeanor Incidents- Victims by Race

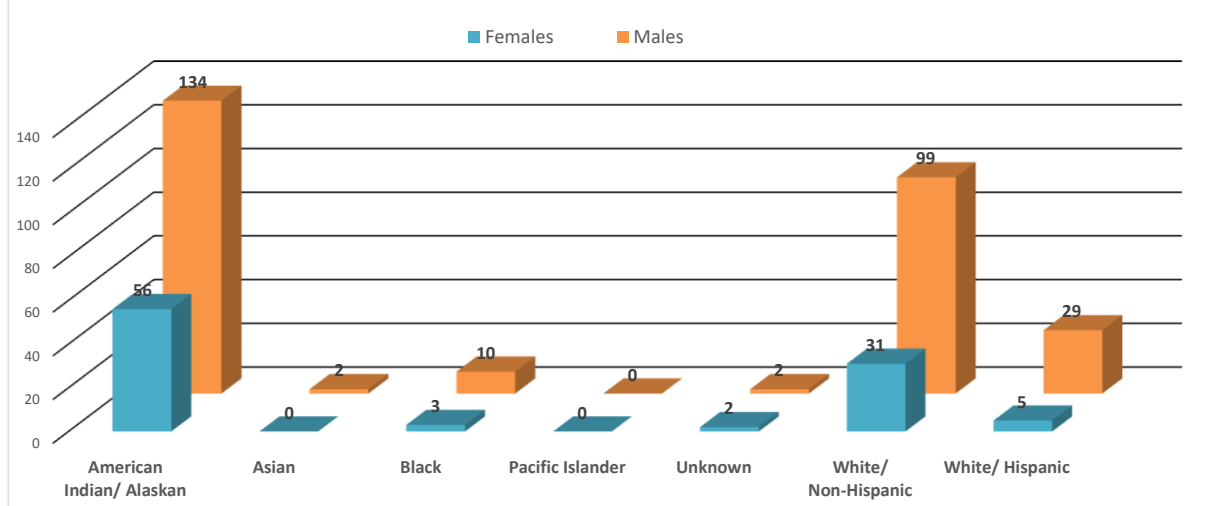


*This data is representative of a single, victim by race/ethnicity, in a single incident only. There may be multiple victims of the same race/ethnicity within that incident, but that data is not captured or displayed above.

**If there are multiple victims within the same incident, that have a different race/ethnicity, those differing races/ethnicities are identified and displayed above.

***If the same individual has been the victim of different incidents, that data is captured and displayed above.

2022 Year To Date: Misdemeanor Arrests by Race



*This data is representative of a single, individual arrest by incident only; these numbers do not reflect the total number of charges from a single incident.

**There may be individuals who have been arrested for different incidents; if the same person is arrested for a different incident (generally different time/date/location), that information is captured and displayed on the above chart.



FLAGSTAFF POLICE DEPARTMENT MONTHLY REPORT FEBRUARY

	FEBRUARY	Y.T.D. 2022	Y.T.D. 2021	% CHANGE
CALLS FOR SERVICE (TOTAL)	5,344	11,160	11,877	-6.0%
1. Police	3,024	6,054	6,171	-1.9%
2. Sheriff	1,073	2,393	2,741	-12.7%
3. City Fire	1,051	2,283	2,511	-9.1%
4. Rural Fire	184	417	421	-1.0%
5. Forest Service	10	11	29	-62.1%
6. US NPS	2	2	4	-50.0%
	-			
REPORTS TAKEN (TOTAL)	1,326	2,814	2,603	8.1%
1. Misdemeanor	550	1,159	1,090	6.3%
2. Felony	173	388	463	-16.2%
3. Incident	603	1,267	1,050	20.7%
Accident	212	407	429	-5.1%
Incident - no report	1,698	3,240	3,273	-1.0%
Short Form Reports	21	29	36	-19.4%
Violent Crimes	17	42	41	2.4%
Property Crimes	98	214	220	-2.7%
	-			
ARRESTS (TOTAL)	256	569	704	-19.2%
1. Misdemeanor arrests	187	415	594	-30.1%
2. Felony Arrests	69	154	110	40.0%
In-Custody Bookings	130	304	573	-46.9%
Juvenile Arrests	7	12	10	20.0%
Juvenile Referrals	18	23	12	91.7%
Warrant Arrests	21	40	43	-7.0%
TRAFFIC ACCIDENTS (TOTAL)				
Includes Private Property	212	407	429	-5.1%
1. Non-Injury Accidents	185	355	378	-6.1%
2. Injury Accidents	25	50	50	0.0%
3. Fatal Accidents	2	2	1	100.0%
Private Property Accidents	55	115	122	-5.7%
DUI Related Accidents	8	12	15	-20.0%
CITATIONS ISSUED (TOTAL)	306	724	1,233	-41.3%
1. Traffic	198	463	854	-45.8%
D.U.I.'s	33	71	94	-24.5%
2. Criminal (Non-Traffic)	108	261	379	-31.1%
	-			
WARNING & REPAIR ORDERS	525	1,193	1,689	-29.4%
FIELD I.D. CARDS	363	797	1,322	-39.7%
PI CONTACTS	66	169	362	-53.3%
DETECTIVES				
1. Cases Assigned	226	504	519	-2.9%
2. Cases Cleared	116	266	232	14.7%
3. Clearance Rate	51.3%	52.8%	44.7%	8.1%
DOMESTIC VIOLENCE				
1. Incidents Reported	129	314	266	18.0%
a. Misdemeanor	102	248	227	9.3%
b. Felony	27	66	39	69.2%
2. Arrests	36	101	105	-3.8%



FLAGSTAFF POLICE DEPARTMENT MONTHLY REPORT
February 2022

	FEBRUARY	Y.T.D. 2022	Y.T.D. 2021	% CHANGE
COMMUNITY RELATIONS & TRAINING				
1. Public Speaking Presentations Includes Media Releases	92	198	238	-16.8%
2. Training - Total Hours	1,943	3,907	1,414	176.3%
Academy	568	1,328	528	151.5%
Field Training	536	1,128	720	56.7%
Advance Officer Training	839	1,451	166	774.1%
3. Volunteer Hours	39	93	266	-65.0%
4. Community Support Mtg.	20	40	88	-54.5%
ANIMAL CONTROL (PATROL)				
1. Impounds	6	16	42	-61.9%
2. Citations	-	-	-	0.0%
	-			
PATROL HOURS IN FIELD	9,025	18,969	20,216	-6.2%

PERSONNEL	Field Operations	Support Services	
1. Authorized Strength	119	57	
2. Actual Strength	101	52	
3. Resignations or Terminations	1	1	
4. New Hires	0	1	