

# CompStat Report

FLAGSTAFF POLICE DEPARTMENT

April 2022

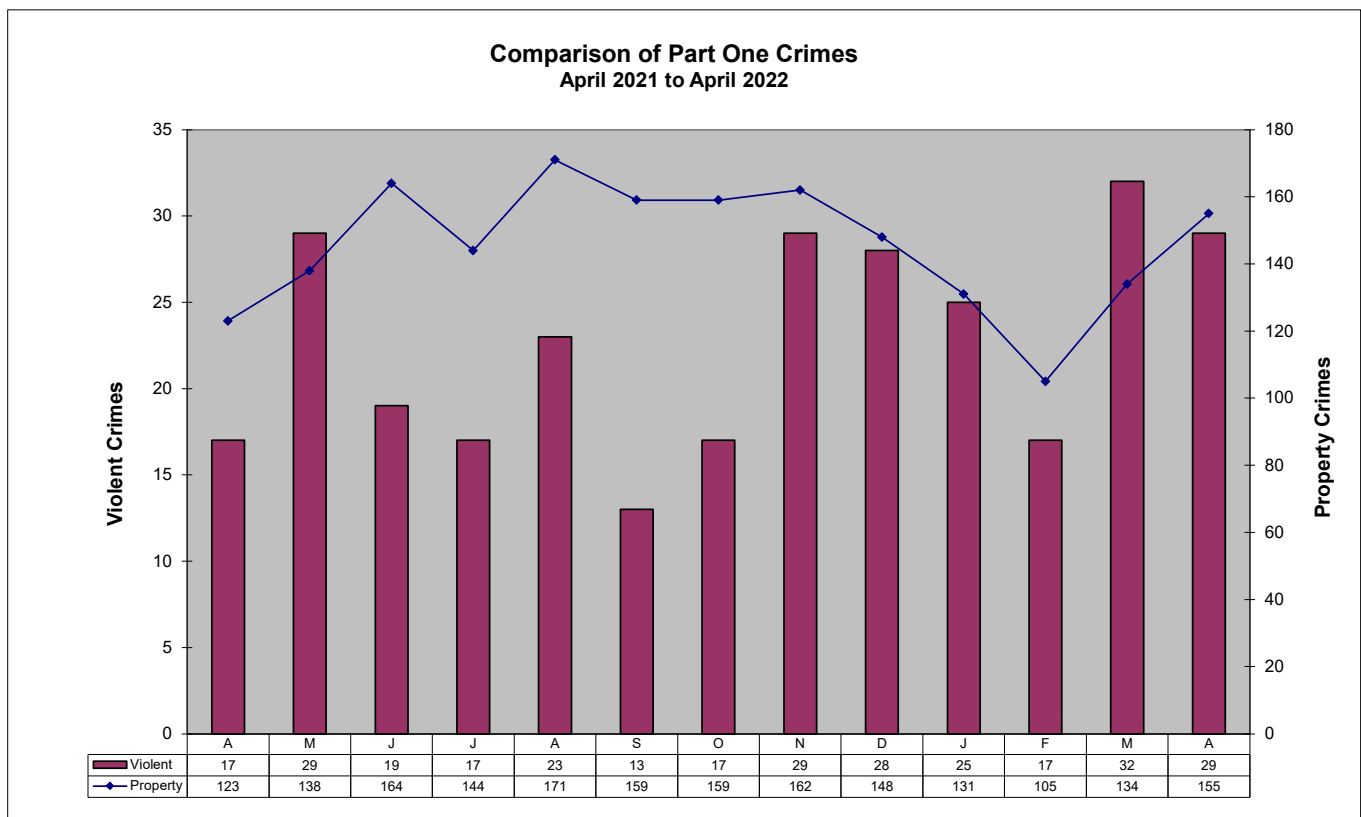


*ad honorem*

## Part One Crime Summary

April 2022

CRIME TYPE	Jan	Feb	Mar	Apr	YTD		%	CLEARED	% CLEARED	
					2022	2021	Change	2022	2022	2021
HOMICIDE*	1	0	1	0	2	0	200%	2	100%	0%
SEX OFFENSES	9	9	14	10	42	23	83%	22	52%	52%
SEX ASSAULTS	4	5	5	7	21	12	75%	12	57%	83%
ROBBERY*	2	3	3	8	16	11	45%	7	44%	83%
AGG ASSAULT*	13	5	14	11	43	31	39%	31	72%	18%
BURGLARY	7	7	3	10	27	22	23%	13	48%	36%
LARC THEFT	108	92	125	140	465	415	12%	199	43%	35%
GTA	12	6	6	4	28	27	4%	9	32%	56%
<b>VIOLENT*</b>	25	17	32	29	103	65	58%	62	60%	63%
<b>PROPERTY</b>	131	105	134	155	525	464	13%	214	41%	33%
<b>GRAND TOTAL</b>	156	122	166	184	628	529	19%	276	44%	37%
ARSON	4	0	0	1	5	1	400%	2	40%	0%



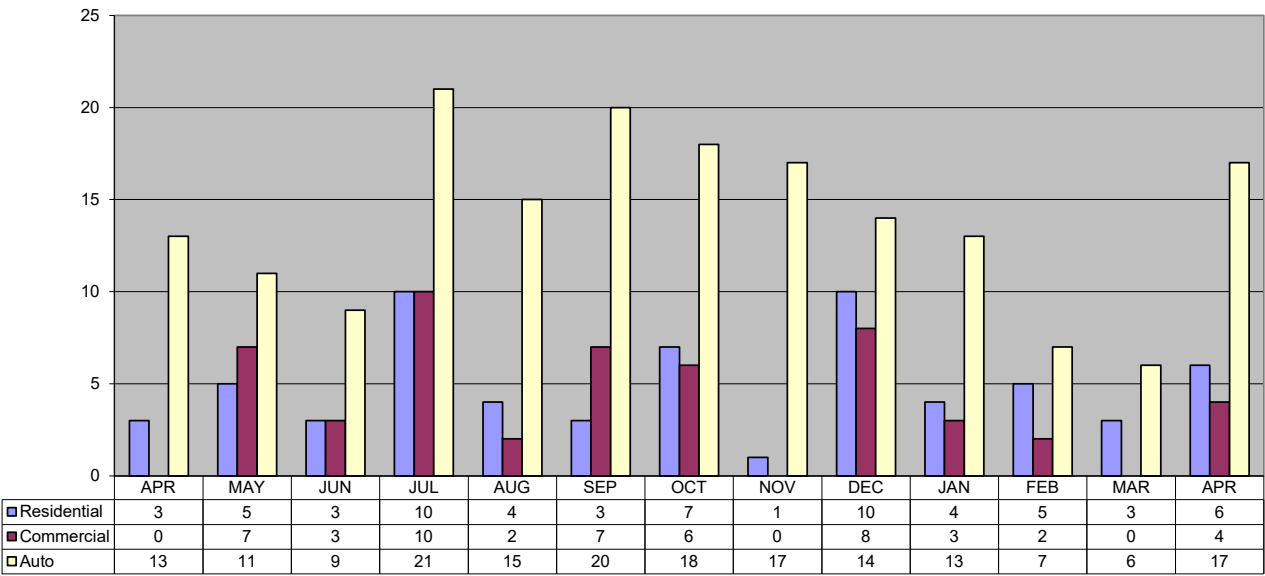
# Patrol Activity / Goals

April 2022

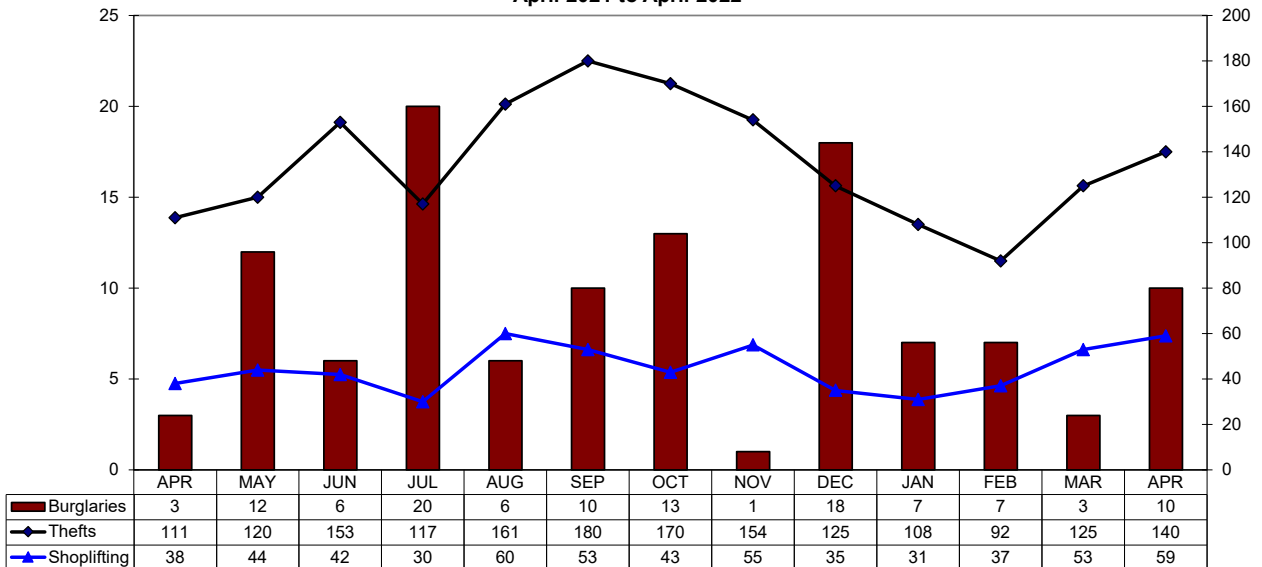
ACTIVITY TYPE	Dec	Jan	Feb	Mar	Apr	YTD 2022	YTD 2021	% Change
<b>Robberies</b>	3	2	3	3	8	16	11	<b>45%</b>
<b>Total Burglaries</b>	18	7	7	3	10	27	22	<b>23%</b>
Res Burglaries	17	4	5	3	6	18	13	<b>38%</b>
Comm Burglaries	10	3	2	-	4	9	9	<b>0%</b>
<b>Auto Burglaries</b>	8	13	7	6	17	43	40	<b>8%</b>
<b>Shoplifting</b>	35	31	37	53	59	180	145	<b>24%</b>
<b>Citations/Warnings</b>	648	933	723	817	921	3,394	4,767	<b>-29%</b>
<b>DUI Arrests</b>	34	38	33	37	47	155	209	<b>-26%</b>
<b>Collisions</b>	256	195	212	222	220	849	817	<b>4%</b>

**NOTE: In addition to the 47 DUI arrests, 20 are pending blood results.**

**Thirteen Month Comparison of all Burglaries**  
April 2021 to April 2022



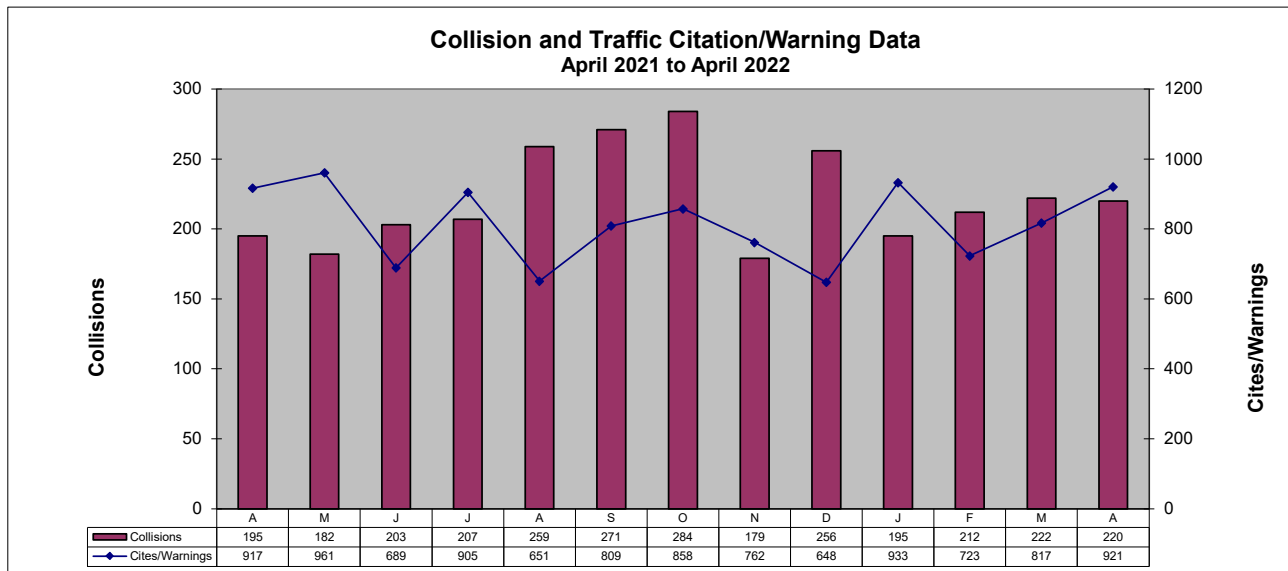
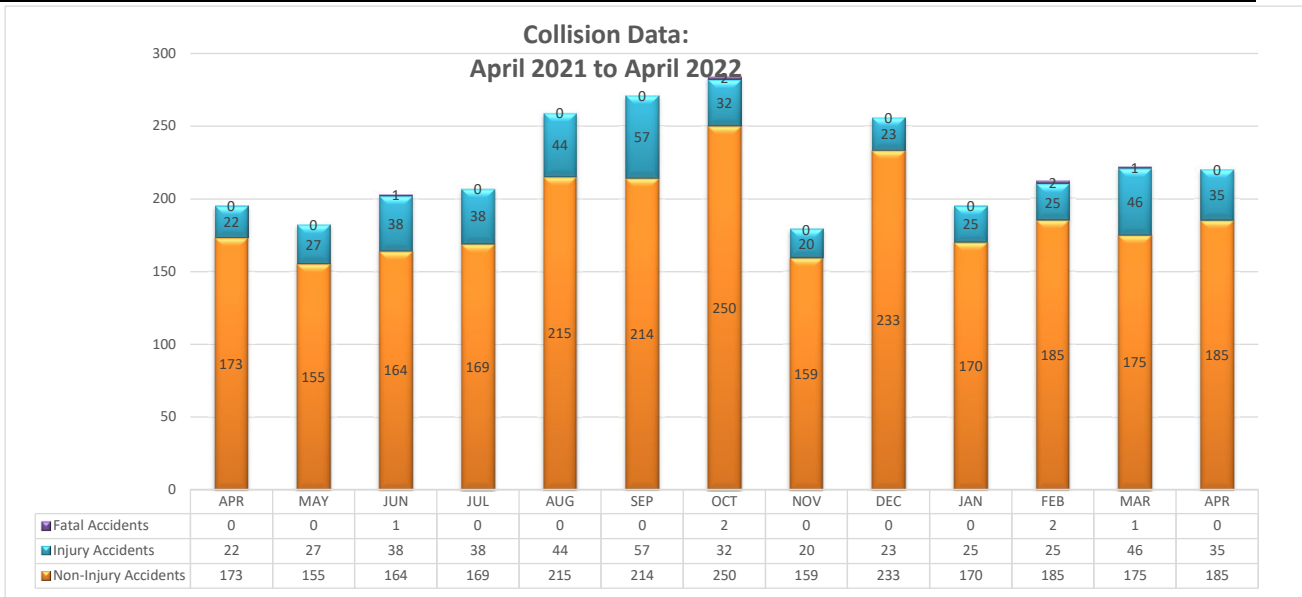
**Thirteen Month Comparison of Thefts and Burglaries**  
April 2021 to April 2022



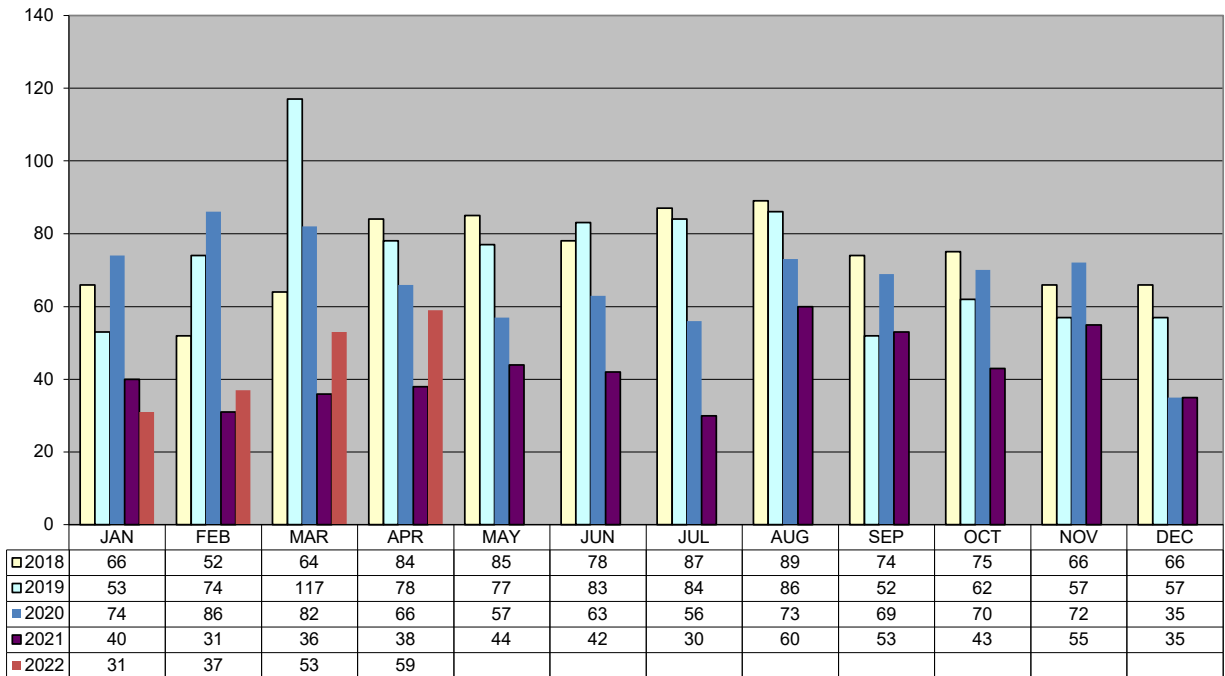
# TRAFFIC DATA

April 2022

ACTIVITY TYPE	Dec	Jan	Feb	Mar	Apr	YTD	YTD	%
	2021	2022	2021	2022	2022	2022	2021	Change
Non-Injury Collisions	233	170	185	175	185	715	713	0%
Injury Collisions	23	25	25	46	35	131	101	30%
Fatal Collisions	0	0	2	1	0	3	3	0%
Private Property Collisions	60	60	55	71	59	245	242	1%
DUI Related Collisions	6	4	8	6	6	24	33	-27%
DUI (Total)	34	38	33	37	47	155	209	-26%
DUI (Alcohol)		37	31	36	46	150	189	-21%
DUI (Drugs)		1	2	1	1	5	20	-75%
Traffic Citations	184	265	198	248	317	1,028	1,637	-37%
Warnings	464	668	525	569	604	2,366	3,130	-24%
Parking Citations	61	52	77	34	23	186	253	-26%
All Traffic Stops	962	1,228	931	983	921	4,063	5,868	-31%
Traffic Stops-No Enfor	101	48	56	69	78	251	487	-48%
30-Day Impounds	8	10	10	19	5	44	75	-41%



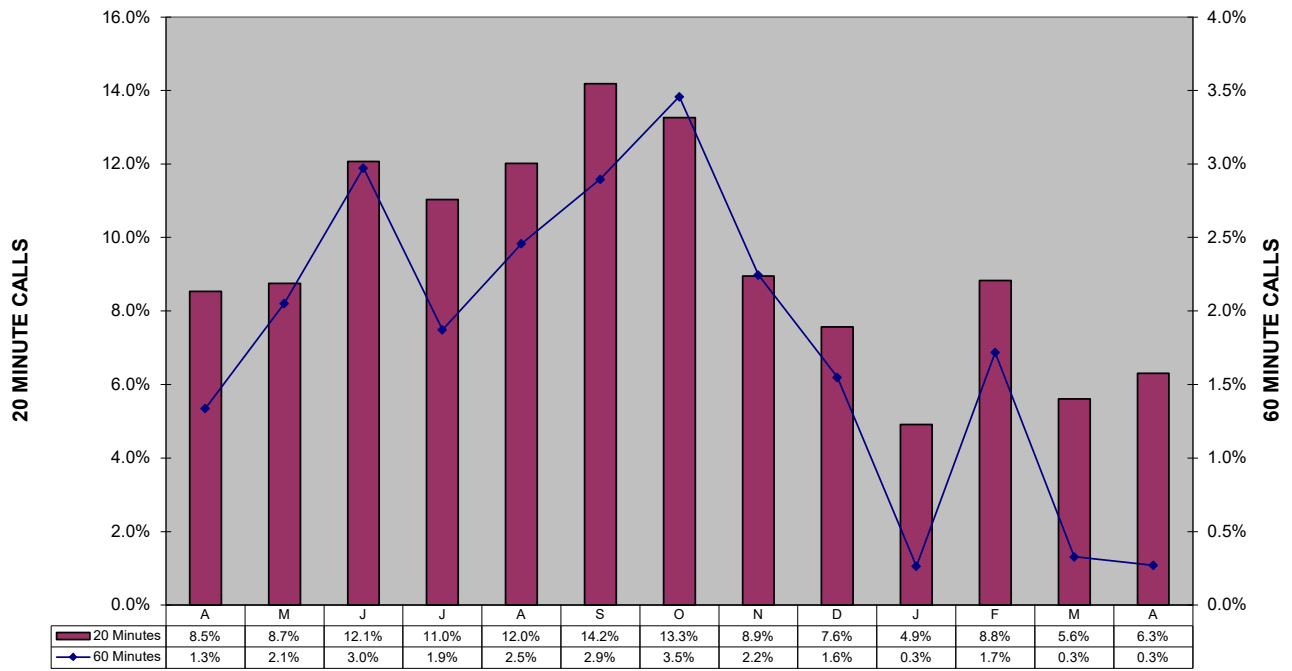
### Shoplifting 5-Year Comparison



### Police Calls for Service - 12 Month Trend April 2022

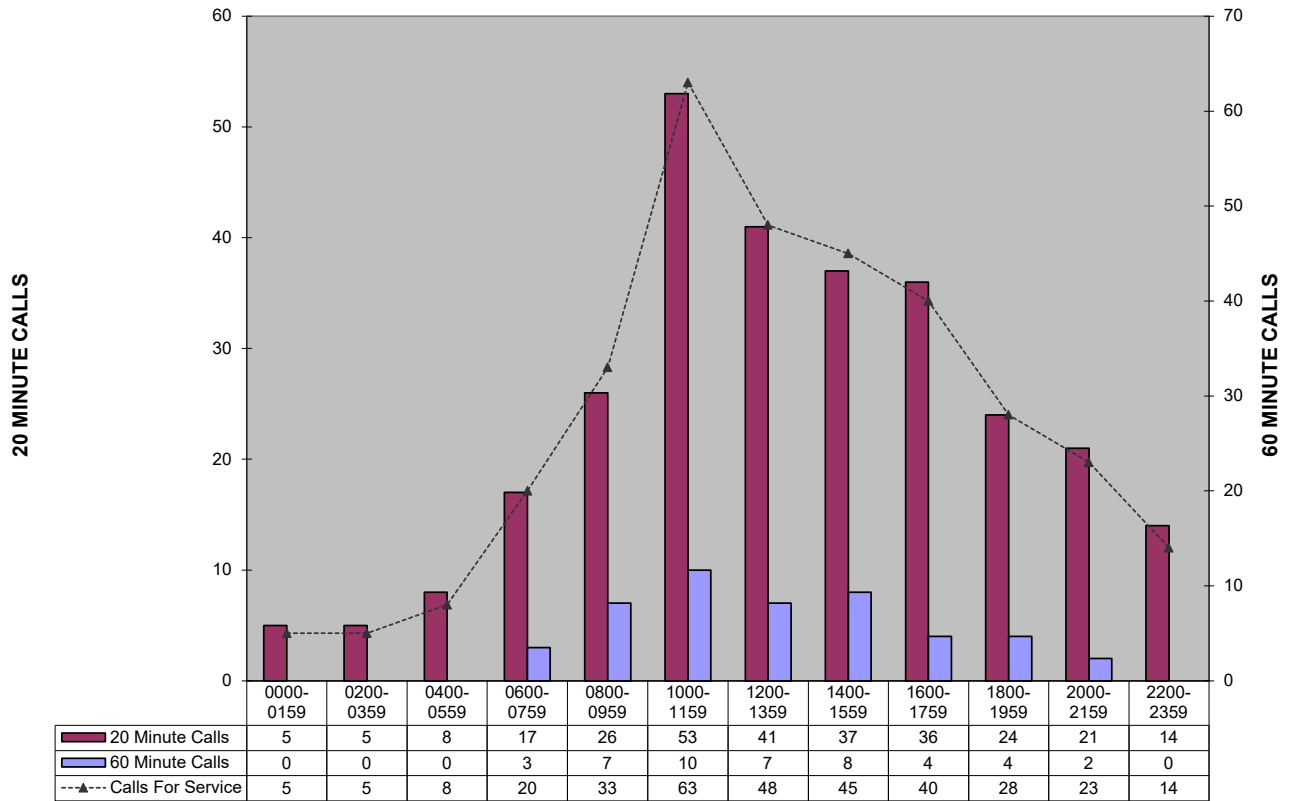


**Percent of Police Calls Held 20 and 60 Minutes  
April 2021 to April 2022**

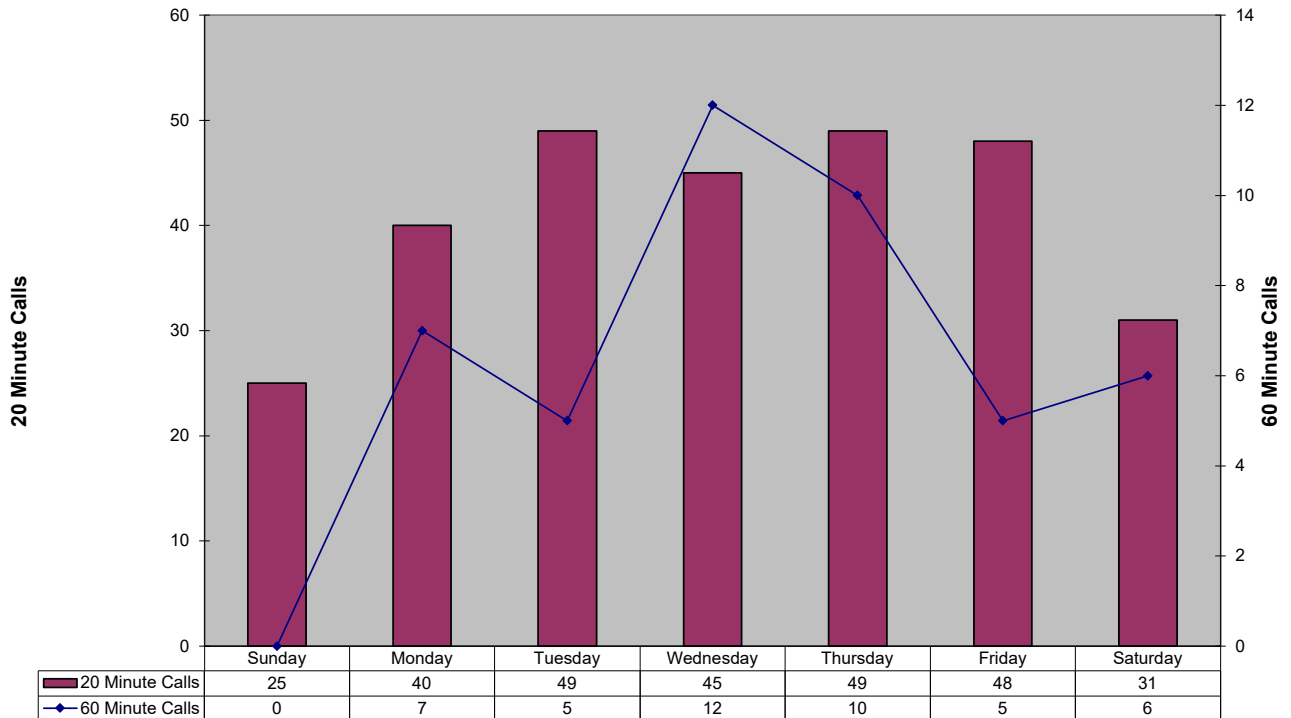


This section intentionally left blank.

### 20 and 60 Minute Calls Held by Time of Day (This custom report is being configured)

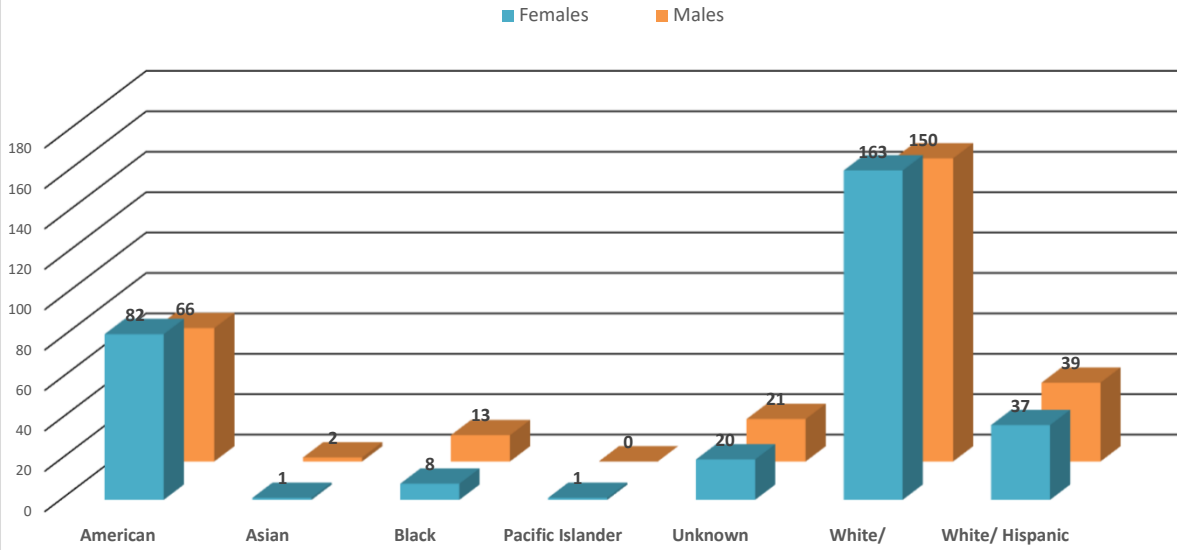


### 20 and 60 Minute Calls Holding by Day of Week (This custom report is being configured)



In an effort to be more transparent, we have started presenting arrest and victimization rates year to date. These statistics are currently being impacted by trends related to the Covid -19 pandemic. Flagstaff has seen less visitation and tourism, and a reduction in our college student population. This has positively manifested itself in reduced criminality and arrests in some areas. Our community is one of only a few that has provided additional housing options for homeless populations. This has drawn more homeless individuals to Flagstaff. Unfortunately, we continue to see Native American members of our homeless population over-represented in both arrest and victimization data. Many of these arrests are on those who are not City residents, and many of these arrests are of repeat offenders.

### April 2022 Year To Date: Felony Incidents- Victims by Race

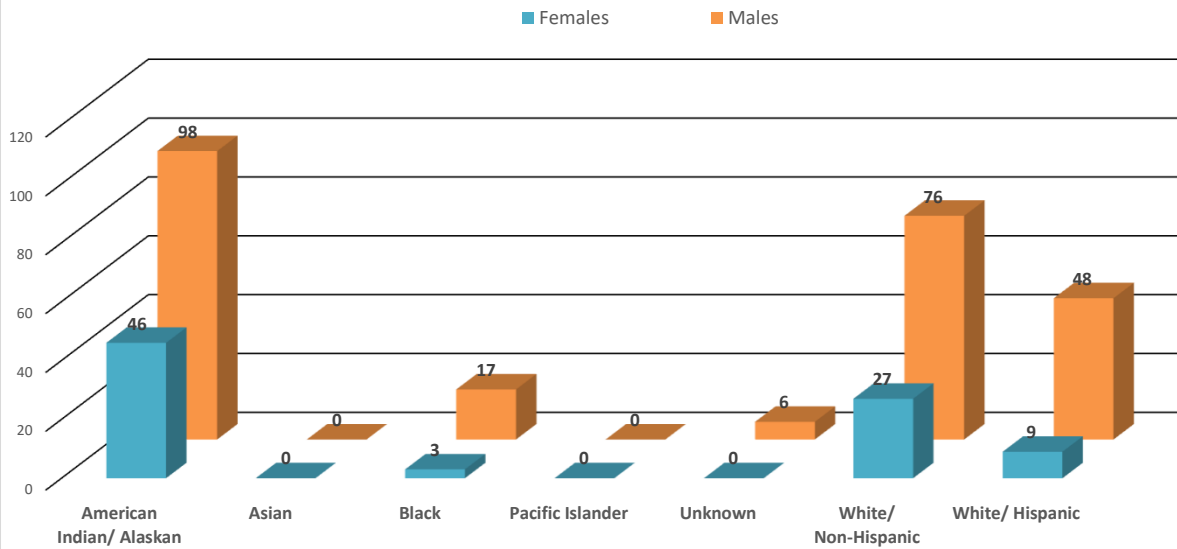


\*This data is representative of a single, victim by race/ethnicity, in a single incident only. There may be multiple victims of the same race/ethnicity within that incident, but that data is not captured or displayed above.

\*\*If there are multiple victims within the same incident, that have a different race/ethnicity, those differering races/ethnicities are identified and displayed above.

\*\*\*If the same individual has been the victim of different incidents, that data is captured and displayed above.

### April 2022 Year To Date: Felony Arrests by Race

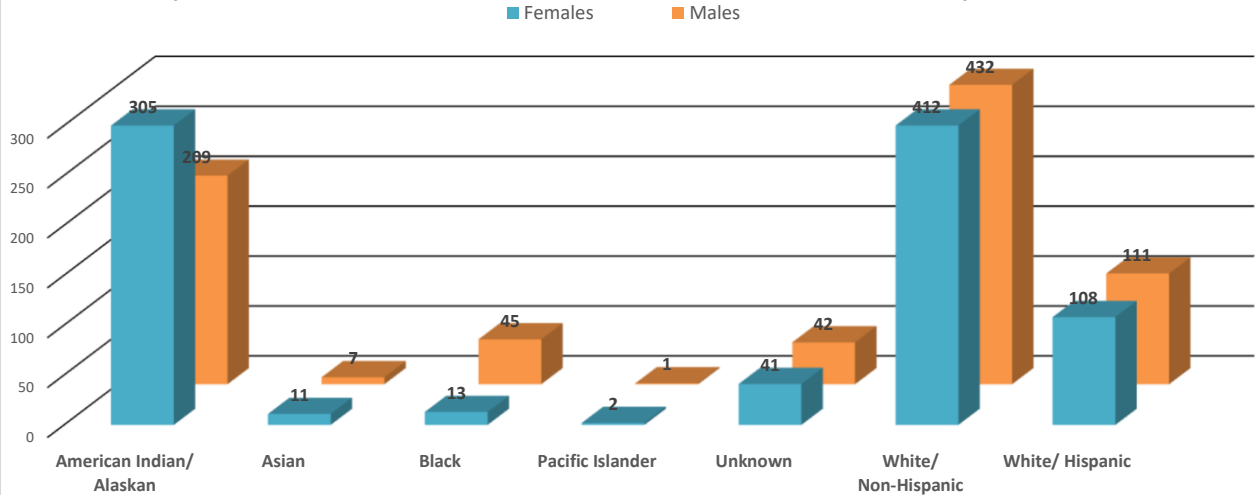


\*This data is representative of a single, individual arrest by incident only; these numbers do not reflect the total number of charges from a single incident.

\*\*There may be individuals who have been arrested for different incidents; if the same person is arrested for a different incident (generally different time/date/location), that information is captured and displayed on the above chart.

In an effort to be more transparent, we have started presenting arrest and victimization rates year to date. These statistics are currently being impacted by trends related to the Covid -19 pandemic. Flagstaff has seen less visitation and tourism, and a reduction in our college student population. This has positively manifested itself in reduced criminality and arrests in some areas. Our community is one of only a few that has provided additional housing options for homeless populations. This has drawn more homeless individuals to Flagstaff. Unfortunately, we continue to see Native American members of our homeless population over-represented in both arrest and victimization data. Many of these arrests are on those who are not City residents, and many of these arrests are of repeat offenders.

### April 2022 Year To Date: Misdemeanor Incidents- Victims by Race

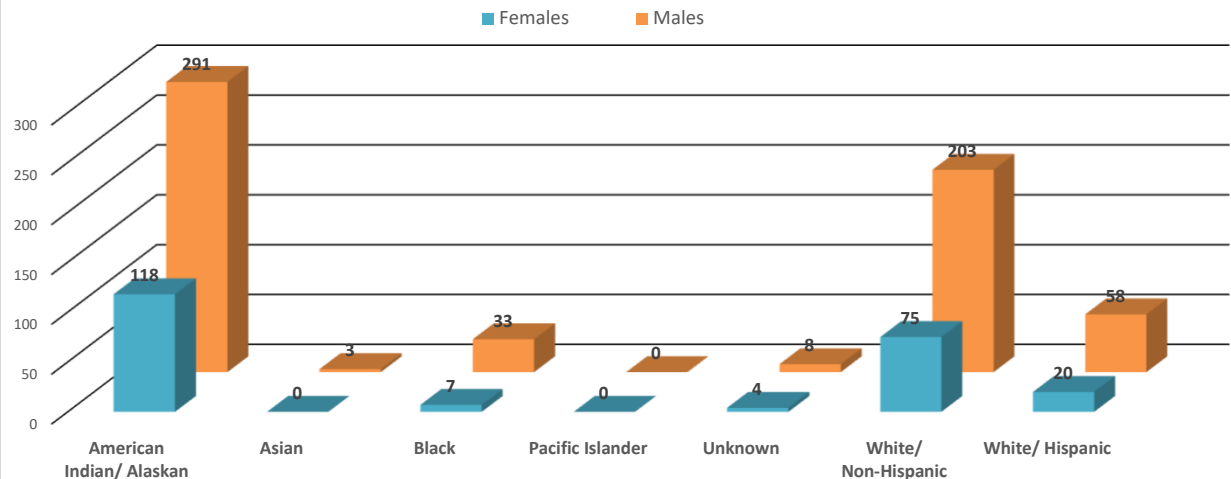


\*This data is representative of a single, victim by race/ethnicity, in a single incident only. There may be multiple victims of the same race/ethnicity within that incident, but that data is not captured or displayed above.

\*\*If there are multiple victims within the same incident, that have a different race/ethnicity, those differing races/ethnicities are identified and displayed above.

\*\*\*If the same individual has been the victim of different incidents, that data is captured and displayed above.

### April 2022 Year To Date: Misdemeanor Arrests by Race



\*This data is representative of a single, individual arrest by incident only; these numbers do not reflect the total number of charges from a single incident.

\*\*There may be individuals who have been arrested for different incidents; if the same person is arrested for a different incident (generally different time/date/location), that information is captured and displayed on the above chart.





## FLAGSTAFF POLICE DEPARTMENT MONTHLY REPORT April 2022

	APRIL	Y.T.D. 2022	Y.T.D. 2021	% CHANGE
<b>CALLS FOR SERVICE (TOTAL)</b>	6087	22944	24008	-4.4%
1. Police	3327	12427	12573	-1.2%
2. Sheriff	1239	4824	5412	-10.9%
3. City Fire	1290	4791	5106	-6.2%
4. Rural Fire	219	866	858	0.9%
5. Forest Service	8	27	50	-46.0%
6. US NPS	4	9	9	
<b>REPORTS TAKEN (TOTAL)</b>	1532	5759	5383	7.0%
1. Misdemeanor	690	2450	2287	7.1%
2. Felony	227	819	905	-9.5%
3. Incident	615	2490	2191	13.6%
Accident	220	849	817	3.9%
Incident - no report	1795	6668	6895	-3.3%
Short Form Reports	7	47	96	-51.0%
Violent Crimes	29	103	65	58.5%
Property Crimes	155	525	464	13.1%
<b>ARRESTS (TOTAL)</b>	389	1285	1455	-11.7%
1. Misdemeanor arrests	297	953	1147	-16.9%
2. Felony Arrests	92	332	308	7.8%
In-Custody Bookings	312	866	1126	-23.1%
Juvenile Arrests	2	17	13	30.8%
Juvenile Referrals	0	31	22	40.9%
Warrant Arrests	49	129	93	38.7%
<b>TRAFFIC ACCIDENTS (TOTAL)</b>				
Includes Private Property	220	849	817	3.9%
1. Non-Injury Accidents	185	715	713	0.3%
2. Injury Accidents	35	131	101	29.7%
3. Fatal Accidents	0	3	3	0.0%
Private Property Accidents	59	245	242	1.2%
DUI Related Accidents	6	24	33	-27.3%
<b>CITATIONS ISSUED (TOTAL)</b>	500	1606	2412	-33.4%
1. Traffic	317	1028	1637	-37.2%
D.U.I.'s	47	155	209	-25.8%
2. Criminal (Non-Traffic)	183	578	775	-25.4%
<b>WARNING &amp; REPAIR ORDERS</b>	604	2366	3130	-24.4%
<b>FIELD I.D. CARDS</b>	364	1608	2613	-38.5%
<b>PI CONTACTS</b>	116	403	804	-49.9%
<b>DETECTIVES</b>				
1. Cases Assigned	261	1012	1056	-4.2%
2. Cases Cleared	128	519	631	-17.7%
3. Clearance Rate	49.0%	51.3%	59.8%	-8.5%
<b>DOMESTIC VIOLENCE</b>				
1. Incidents Reported	217	685	550	24.5%
a. Misdemeanor	188	561	475	18.1%
b. Felony	29	124	75	65.3%
2. Arrests	85	233	190	22.6%

Shaded areas indicate YTD adjustments



**FLAGSTAFF POLICE DEPARTMENT MONTHLY REPORT**  
**April 2022**

	<b>APRIL</b>	<b>Y.T.D. 2022</b>	<b>Y.T.D. 2021</b>	<b>% CHANGE</b>
<b>COMMUNITY RELATIONS &amp; TRAINING</b>				
1. Public Speaking Presentations				
Includes Media Releases	72	353	390	-9.5%
2. Training - Total Hours	0	6541	4218.5	55.1%
Academy	0	1840	1248	47.4%
Field Training	0	2600	1627.5	59.8%
Advance Officer Training	0	2101	1343	56.4%
3. Volunteer Hours	0	162.75	740.75	-78.0%
4. Community Support Mtg.	20	80	189	-57.7%
<b>ANIMAL CONTROL (PATROL)</b>				
1. Impounds	33	70	82	-14.6%
2. Citations	0	0	3	-100.0%
<b>PATROL HOURS IN FIELD</b>				
	0	28895	40857	-29.3%

<b>PERSONNEL</b>	<b>Field Operations</b>	<b>Support Services</b>		
1. Authorized Strength	0	0		
2. Actual Strength	0	0		
3. Resignations or Terminations	0	0		
4. New Hires	0	0		

This section intentionally left blank.