

CompStat Report

FLAGSTAFF POLICE DEPARTMENT

July 2022

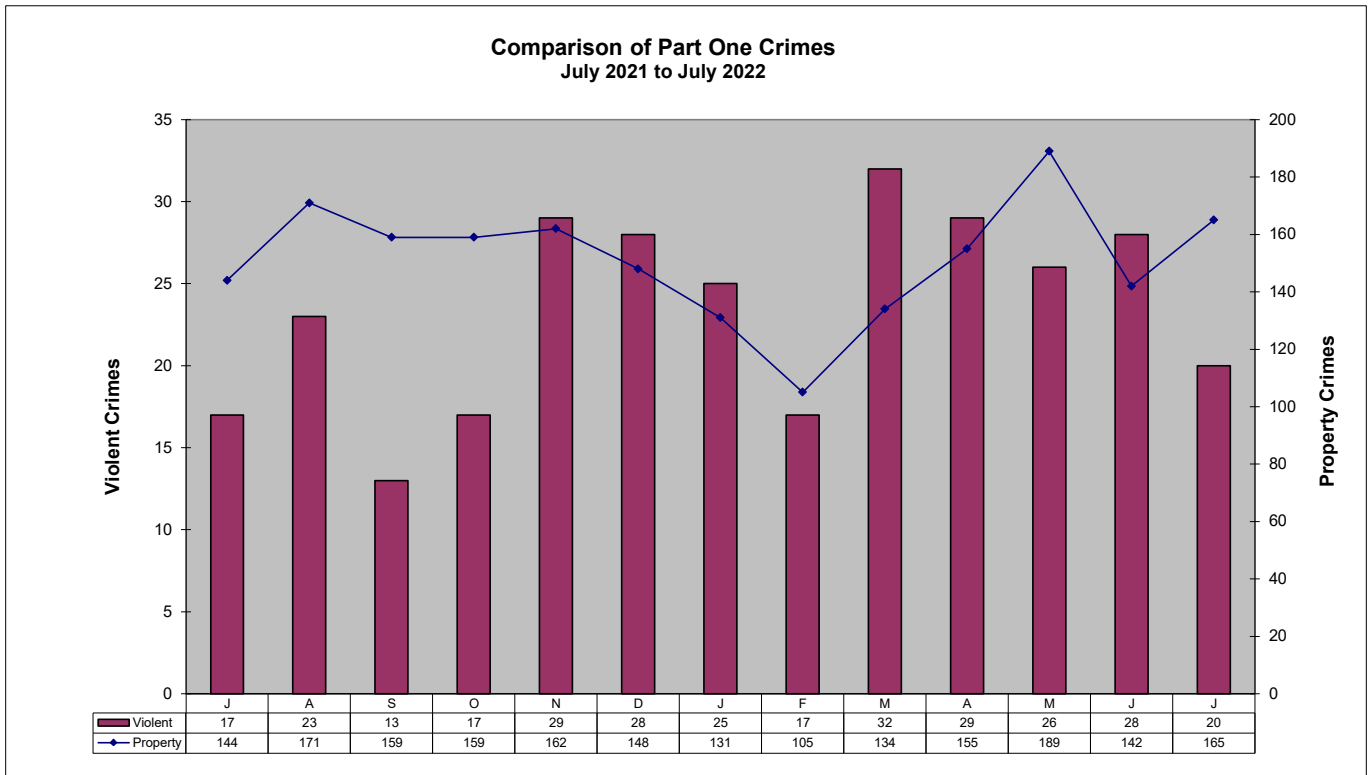


ad honorem

Part One Crime Summary

July 2022

CRIME TYPE						YTD		%	CLEARED	% CLEARED	
	Mar	Apr	May	June	July	2022	2021	Change	2022	2022	2021
HOMICIDE*	1	0	0	1	0	3	2	50%	3	100%	100%
SEX OFFENSES	14	10	10	6	10	68	40	70%	33	49%	43%
SEX ASSAULTS	5	7	3	1	2	27	19	42%	16	59%	40%
ROBBERY*	3	8	6	3	2	27	25	8%	9	33%	40%
AGG ASSAULT*	14	11	10	18	8	79	63	25%	53	67%	10%
BURGLARY	3	10	7	10	10	54	60	-10%	21	39%	20%
LARC THEFT	125	140	172	123	151	911	805	13%	344	38%	30%
GTA	6	4	5	9	4	46	45	2%	17	37%	36%
VIOLENT*	32	29	26	28	20	177	130	36%	98	55%	46%
PROPERTY	134	155	189	142	165	1021	910	12%	371	36%	28%
GRAND TOTAL	166	184	215	170	185	1198	1040	15%	469	39%	30%
ARSON	0	1	5	0	0	10	3	233%	6	60%	33%

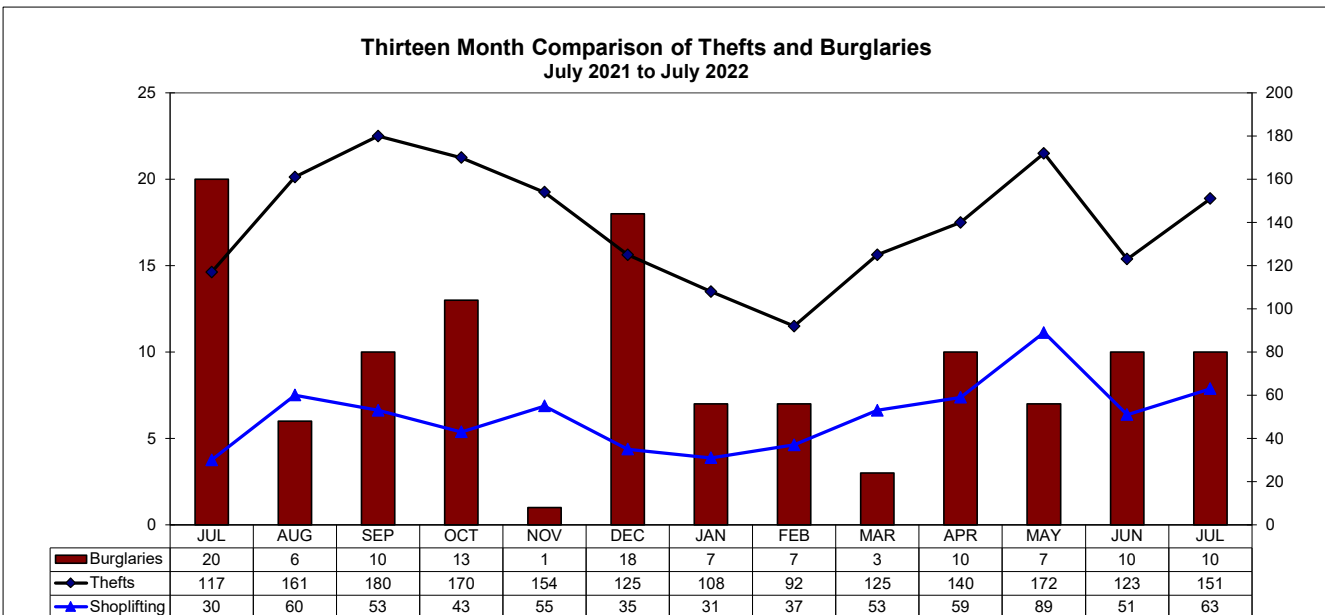
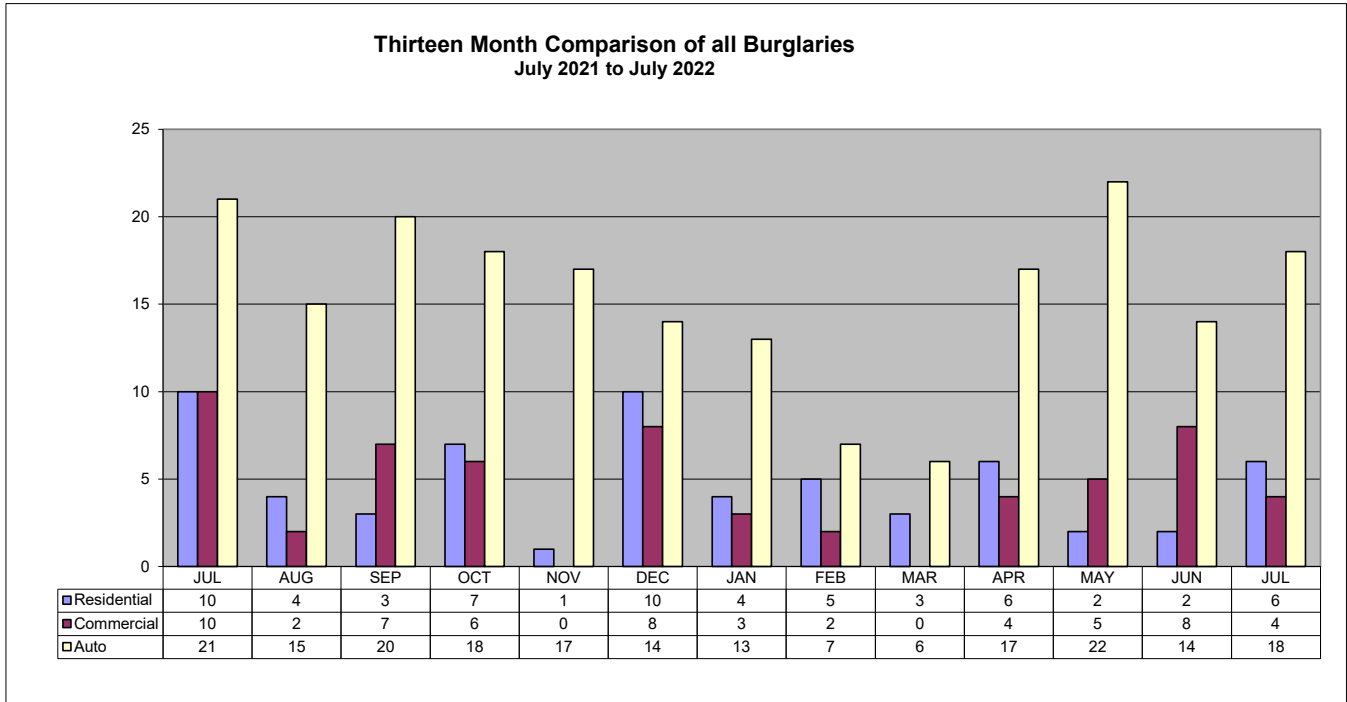


Patrol Activity / Goals

July 2022

ACTIVITY TYPE						YTD 2022	YTD 2021	% Change
	Mar	Apr	May	June	July			
Robberies	3	8	6	3	2	27	25	8%
Total Burglaries	3	10	7	10	10	54	60	-10%
Res Burglaries	3	6	2	2	6	28	31	-10%
Comm Burglaries	-	4	5	8	4	26	29	-10%
Auto Burglaries	6	17	22	14	18	97	81	20%
Shoplifting	53	59	89	51	63	383	261	47%
Citations/Warnings	817	921	966	611	503	5,474	7,322	-25%
DUI Arrests	37	47	42	54	46	297	358	-17%
Collisions	222	220	206	194	215	1,464	1,409	4%

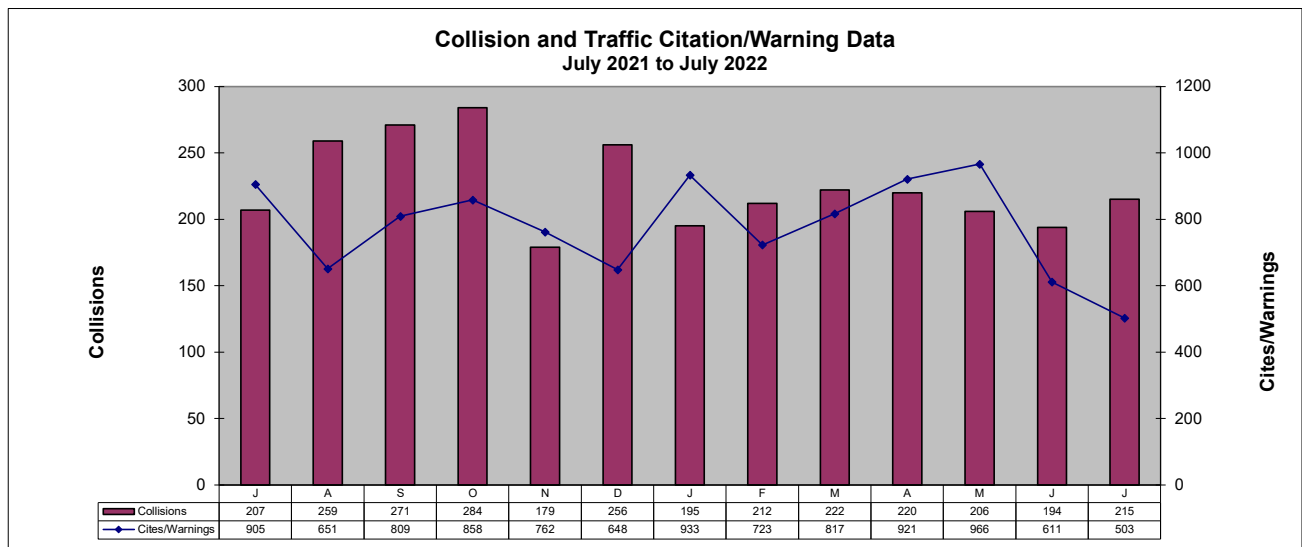
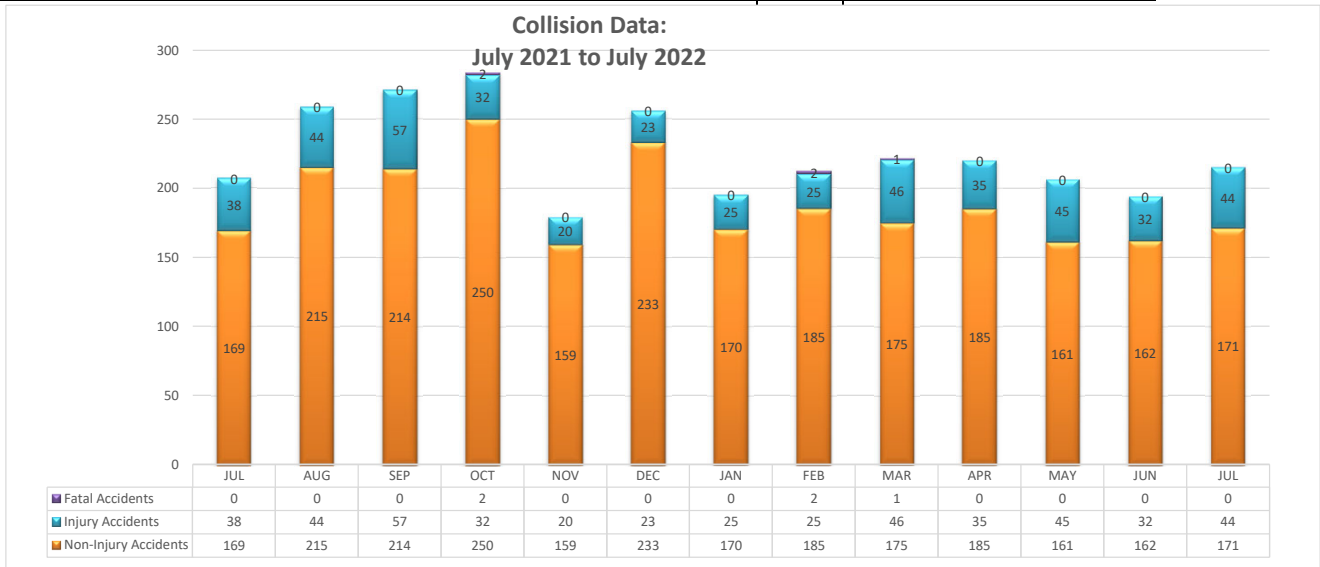
NOTE: In addition to the 46 DUI arrests, 6 are pending blood results.



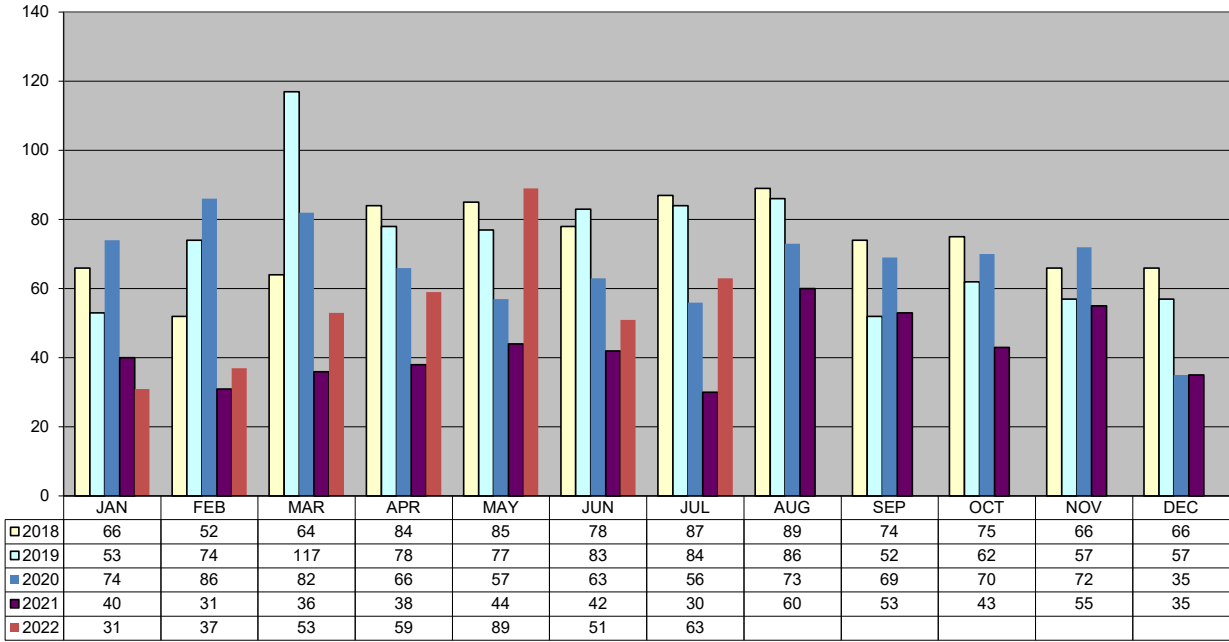
TRAFFIC DATA

July 2022

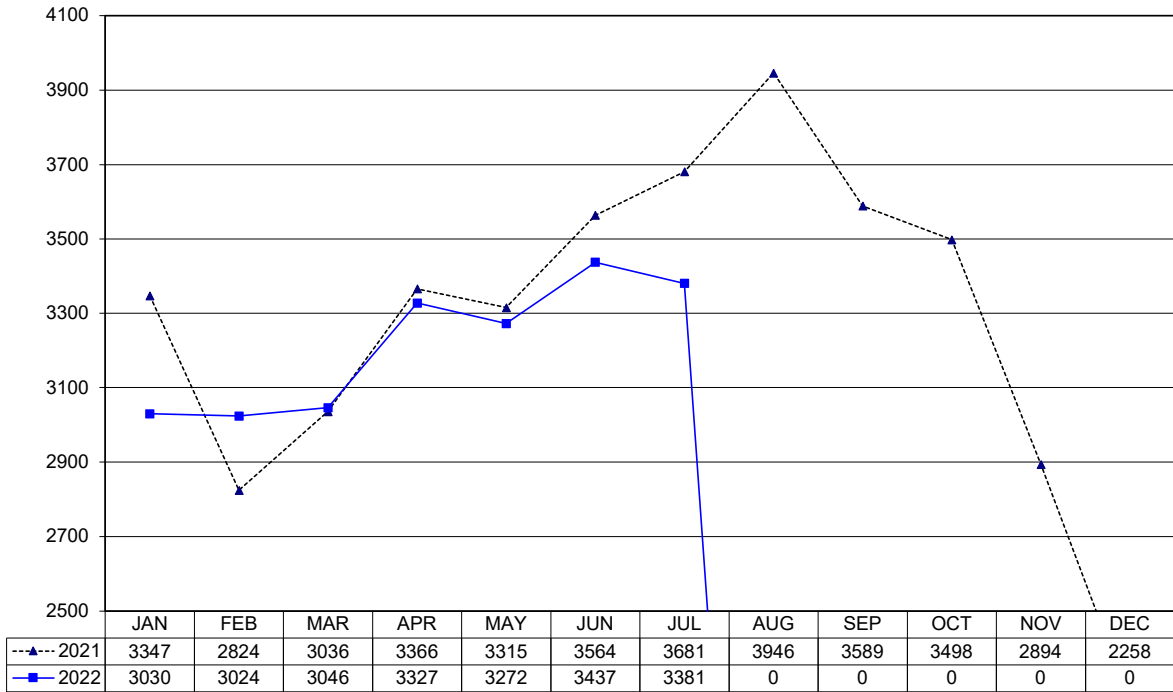
ACTIVITY TYPE	Mar	Apr	May	June	July	YTD 2022	YTD 2021	% Change
	Non-Injury Collisions	175	185	161	162	171	1,209	1,201
Injury Collisions	46	35	45	32	44	252	204	24%
Fatal Collisions	1	0	0	0	0	3	0	300%
Private Property Collisions	71	59	53	52	60	410	440	-7%
DUI Related Collisions	6	6	7	3	10	44	55	-20%
DUI (Total)	37	47	42	54	46	297	358	-17%
DUI (Alcohol)	36	46	42	52	44	288	247	17%
DUI (Drugs)	1	1	0	2	2	9	17	-47%
Traffic Citations	248	317	188	182	150	1,548	2,575	-40%
Warnings	569	604	432	429	353	3,580	4,747	-25%
Parking Citations	34	23	8	17	14	225	273	-18%
All Traffic Stops	983	921	812	819	727	6,421	9,227	-30%
Traffic Stops-No Enfor	69	78	66	68	50	435	936	-54%
30-Day Impounds	19	5	15	16	8	83	106	-22%



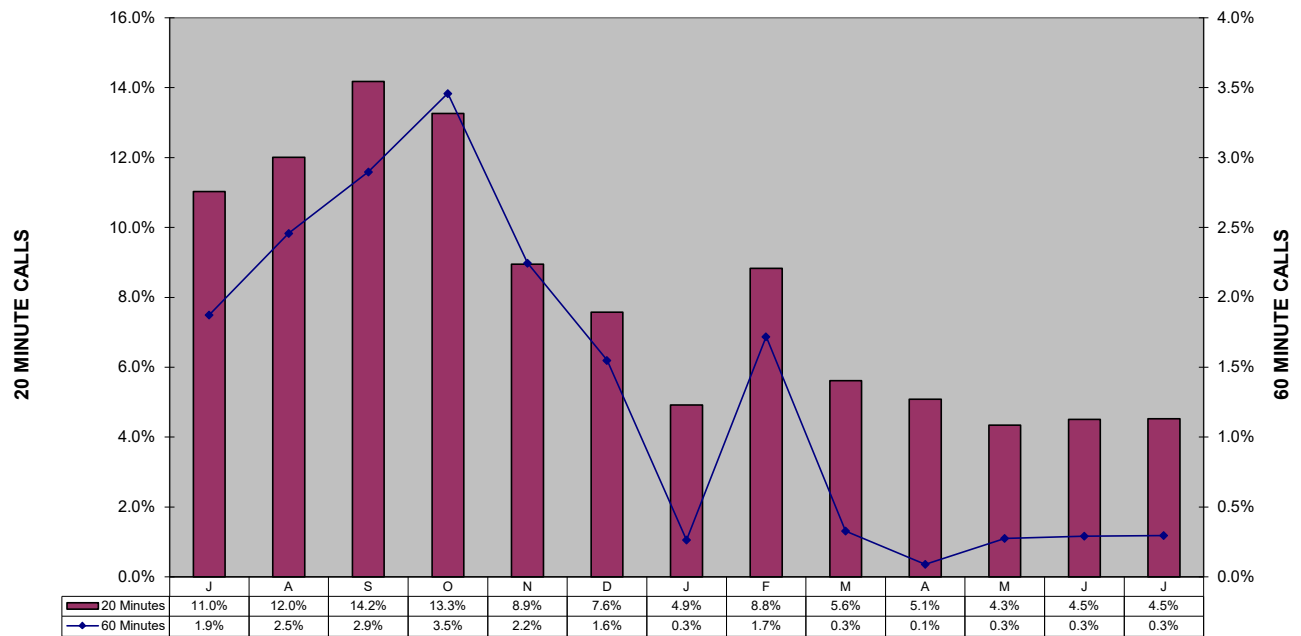
Shoplifting 5-Year Comparison



Police Calls for Service - 12 Month Trend July 2022

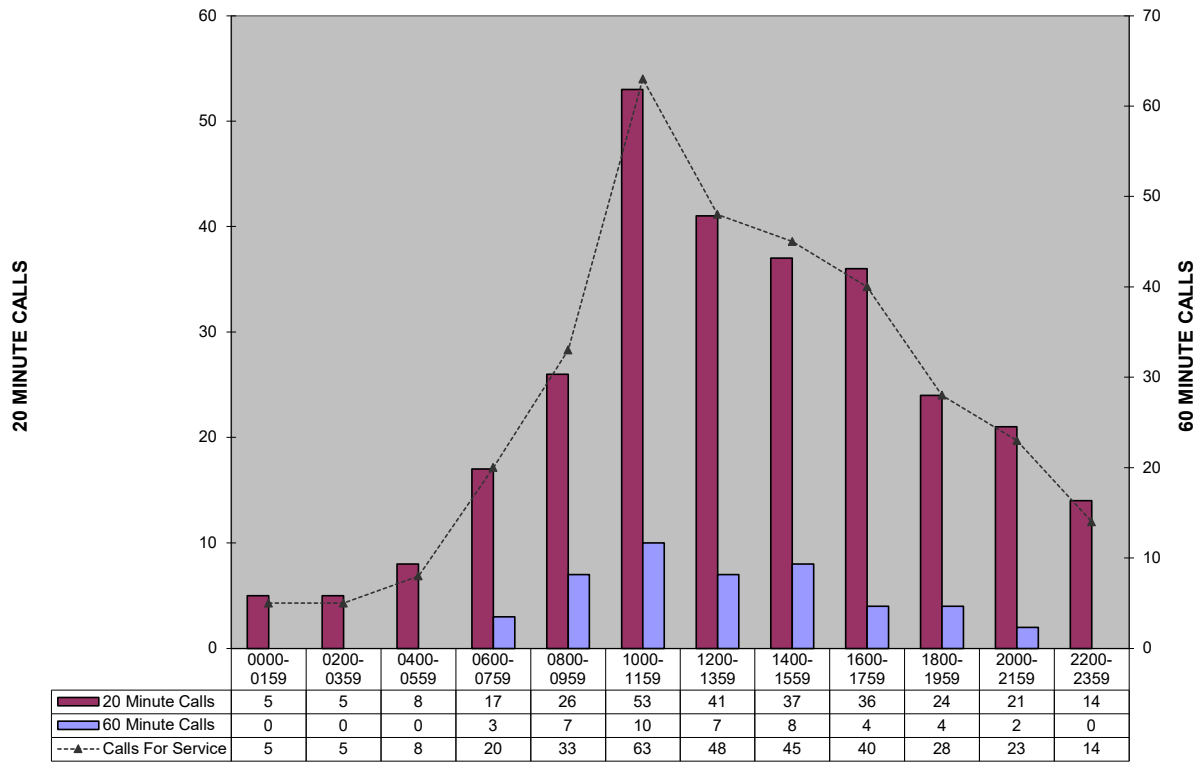


**Percent of Police Calls Held 20 and 60 Minutes
July 2021 to July 2022**

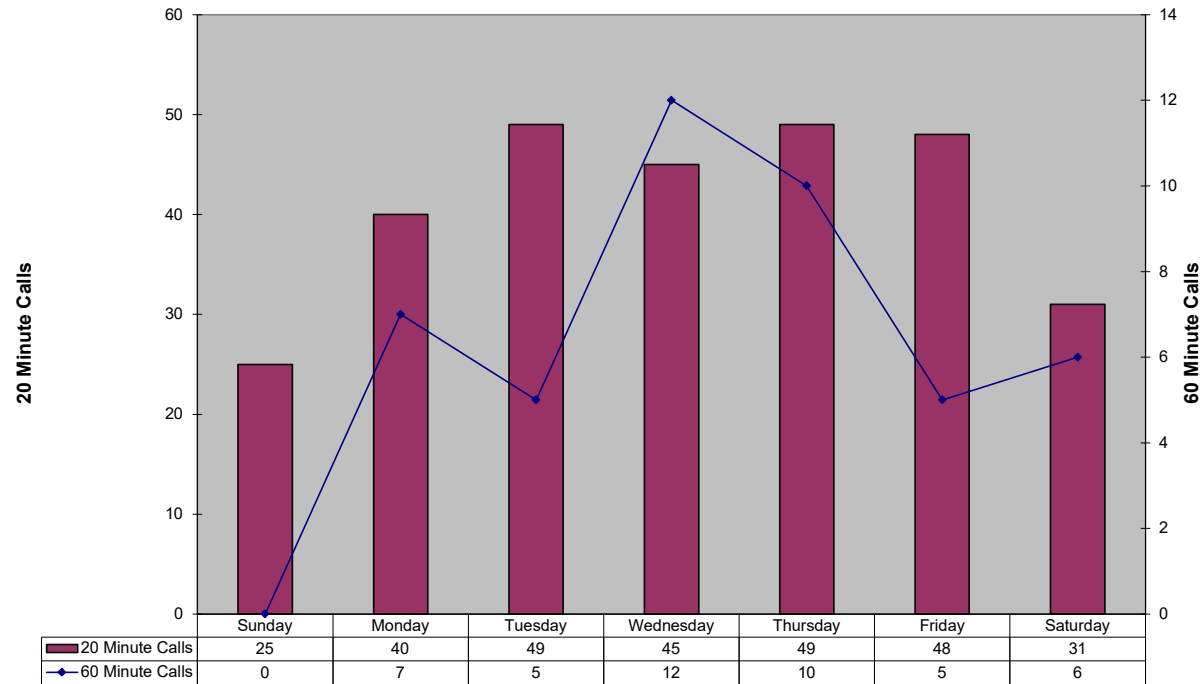


This section intentionally left blank.

20 and 60 Minute Calls Held by Time of Day (This custom report is being configured)

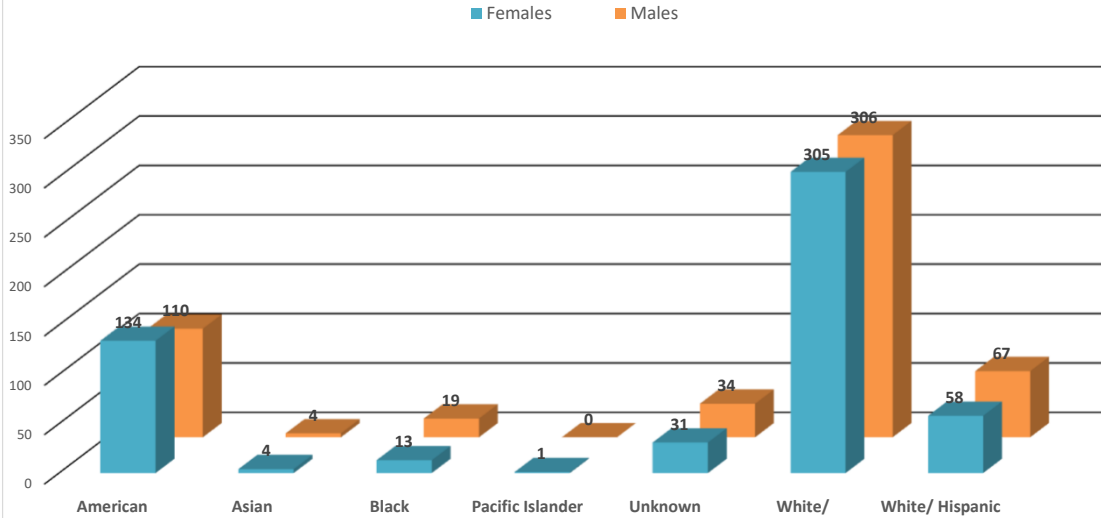


20 and 60 Minute Calls Holding by Day of Week (This custom report is being configured)



In an effort to be more transparent, we have started presenting arrest and victimization rates year to date. These statistics are currently being impacted by trends related to the Covid -19 pandemic. Flagstaff has seen less visitation and tourism, and a reduction in our college student population. This has positively manifested itself in reduced criminality and arrests in some areas. Our community is one of only a few that has provided additional housing options for homeless populations. This has drawn more homeless individuals to Flagstaff. Unfortunately, we continue to see Native American members of our homeless population over-represented in both arrest and victimization data. Many of these arrests are on those who are not City residents, and many of these arrests are of repeat offenders.

July 2022 Year To Date: Felony Incidents- Victims by Race

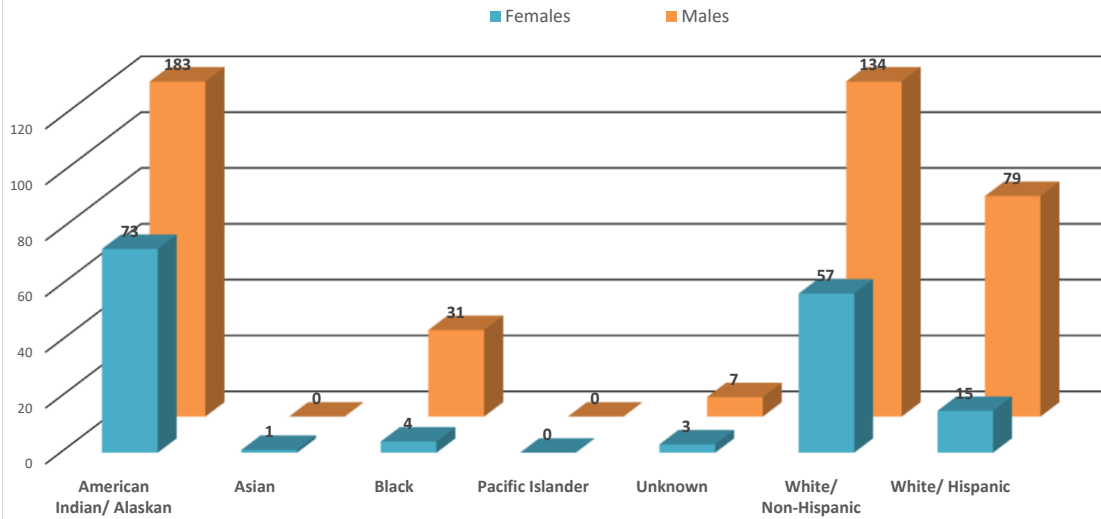


*This data is representative of a single, victim by race/ethnicity, in a single incident only. There may be multiple victims of the same race/ethnicity within that incident, but that data is not captured or displayed above.

**If there are multiple victims within the same incident, that have a different race/ethnicity, those differering races/ethnicities are identified and displayed above.

***If the same individual has been the victim of different incidents, that data is captured and displayed above.

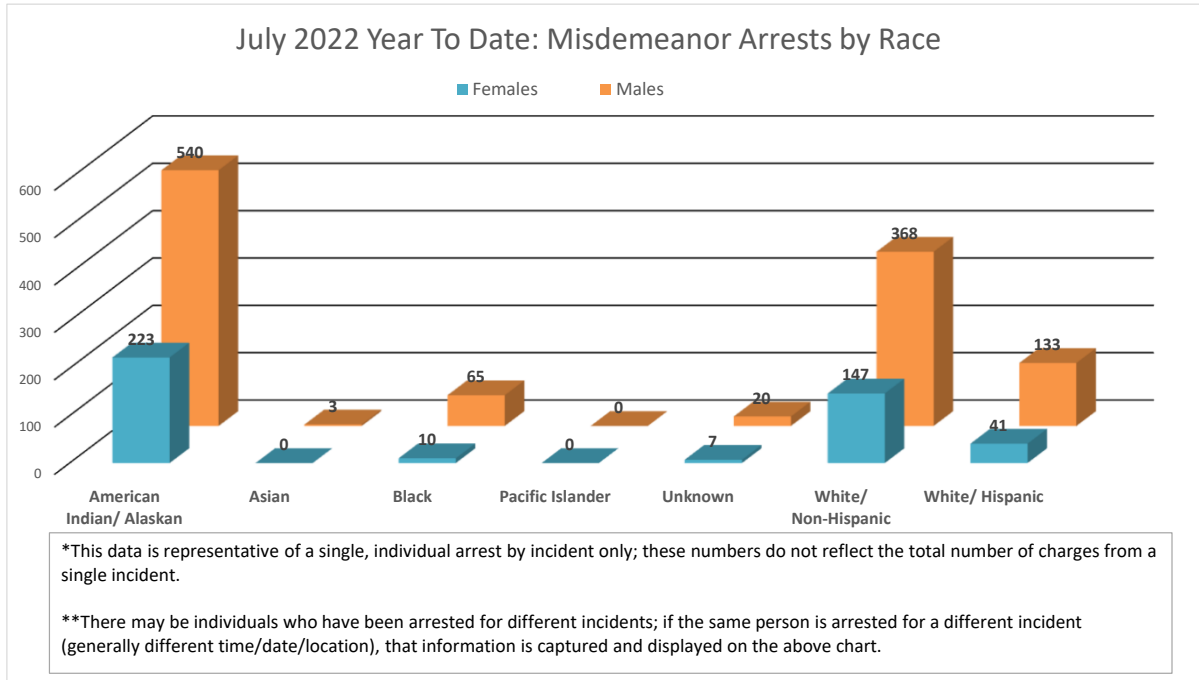
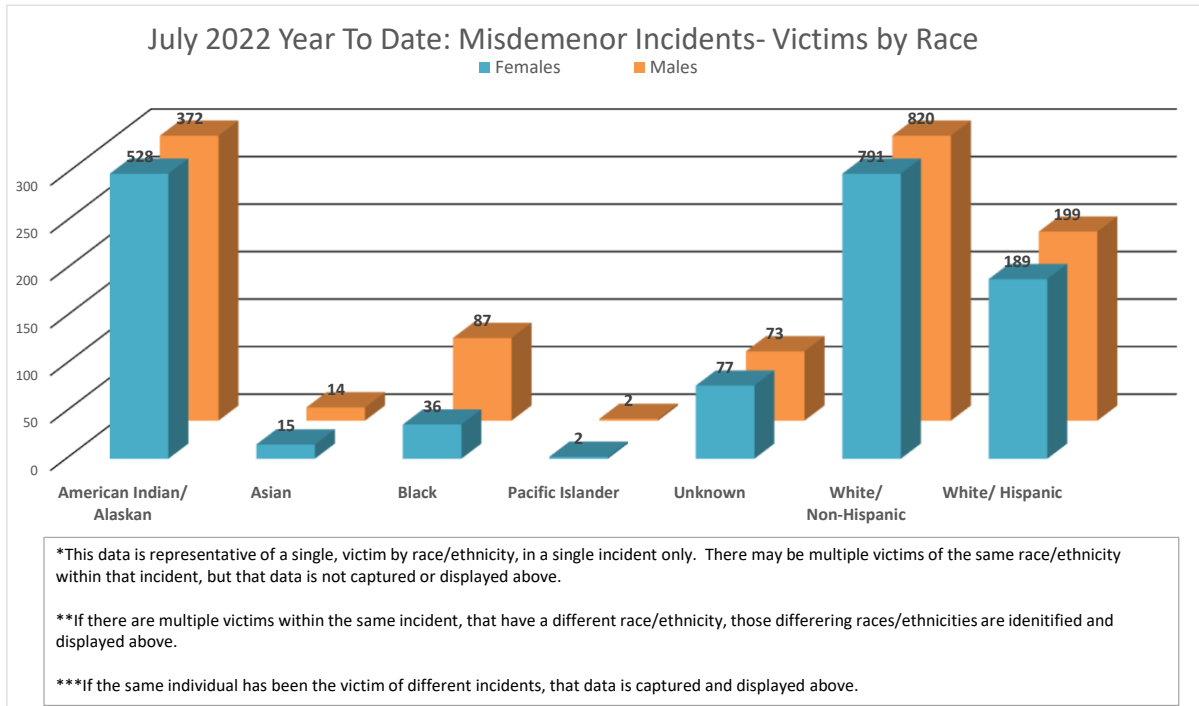
July 2022 Year To Date: Felony Arrests by Race



*This data is representative of a single, individual arrest by incident only; these numbers do not reflect the total number of charges from a single incident.

**There may be individuals who have been arrested for different incidents; if the same person is arrested for a different incident (generally different time/date/location), that information is captured and displayed on the above chart.

In an effort to be more transparent, we have started presenting arrest and victimization rates year to date. These statistics are currently being impacted by trends related to the Covid -19 pandemic. Flagstaff has seen less visitation and tourism, and a reduction in our college student population. This has positively manifested itself in reduced criminality and arrests in some areas. Our community is one of only a few that has provided additional housing options for homeless populations. This has drawn more homeless individuals to Flagstaff. Unfortunately, we continue to see Native American members of our homeless population over-represented in both arrest and victimization data. Many of these arrests are on those who are not City residents, and many of these arrests are of repeat offenders.





FLAGSTAFF POLICE DEPARTMENT MONTHLY REPORT
July 2022

	July	Y.T.D. 2022	Y.T.D. 2021	% CHANGE
CALLS FOR SERVICE (TOTAL)	6969	43153	44878	-3.8%
1. Police	3381	22517	23133	-2.7%
2. Sheriff	1760	9687	10655	-9.1%
3. City Fire	1402	8902	9142	-2.6%
4. Rural Fire	418	1962	1804	8.8%
5. Forest Service	5	64	115	-44.3%
6. US NPS	3	21	29	
REPORTS TAKEN (TOTAL)	1443	10177	9675	5.2%
1. Misdemeanor	659	4466	4228	5.6%
2. Felony	220	1488	1556	-4.4%
3. Incident	151	4223	3891	8.5%
Accident	20	1464	1409	3.9%
Incident - no report	165	14267	13314	7.2%
Short Form Reports	185	85	155	-45.2%
Violent Crimes	20	177	130	36.2%
Property Crimes	165	1021	910	12.2%
ARRESTS (TOTAL)	351	2402	2663	-9.8%
1. Misdemeanor arrests	263	1766	2023	-12.7%
2. Felony Arrests	88	591	640	-7.7%
In-Custody Bookings	266	1523	2051	-25.7%
Juvenile Arrests	1	38	21	81.0%
Juvenile Referrals	6	58	40	45.0%
Warrant Arrests	31	249	187	33.2%
TRAFFIC ACCIDENTS (TOTAL)				
Includes Private Property	215	1464	1409	3.9%
1. Non-Injury Accidents	171	1209	1201	0.7%
2. Injury Accidents	44	252	204	23.5%
3. Fatal Accidents	0	3	4	200.0%
Private Property Accidents	60	410	440	-6.8%
DUI Related Accidents	10	45	55	-18.2%
CITATIONS ISSUED (TOTAL)	337	2697	3957	-31.8%
1. Traffic	150	1548	2575	-39.9%
D.U.I.'s	46	297	358	-17.0%
2. Criminal (Non-Traffic)	187	1149	1382	-16.9%
WARNING & REPAIR ORDERS	353	3580	4747	-24.6%
FIELD I.D. CARDS	490	3001	5071	-40.8%
PI CONTACTS	108	741	1597	-53.6%
DETECTIVES				
1. Cases Assigned	278	1858	1812	2.5%
2. Cases Cleared	141	928	1005	-7.7%
3. Clearance Rate	51%	49.9%	55.5%	-5.5%
DOMESTIC VIOLENCE				
1. Incidents Reported	157	1195	1024	16.7%
a. Misdemeanor	135	993	872	13.9%
b. Felony	22	202	152	32.9%
2. Arrests	57	400	377	6.1%

Shaded areas indicate YTD adjustments



FLAGSTAFF POLICE DEPARTMENT MONTHLY REPORT
July 2022

	JULY	Y.T.D. 2022	Y.T.D. 2021	% CHANGE
COMMUNITY RELATIONS & TRAINING				
1. Public Speaking Presentations Includes Media Releases	0	502	568	-11.6%
2. Training - Total Hours	3342	16705.5	8583.5	94.6%
Academy	1760	5552	2600	113.5%
Field Training	904	6072	2843.5	113.5%
Advance Officer Training	678	5081.5	3438	47.8%
3. Volunteer Hours	24.75	396.25	1003.5	-60.5%
4. Community Support Mtg.	20	140	388	-63.9%
ANIMAL CONTROL (PATROL)				
1. Impounds	46	188	174	8.0%
2. Citations	0	0	8	-100.0%
PATROL HOURS IN FIELD	0	54863.75	71390	-23.1%

PERSONNEL	Field Operations	Support Services		
1. Authorized Strength	119	57		
2. Actual Strength	110	46		
3. Resignations or Terminations	3	2		
4. New Hires	3	1		

This section intentionally left blank.