

# CompStat Report

FLAGSTAFF POLICE DEPARTMENT

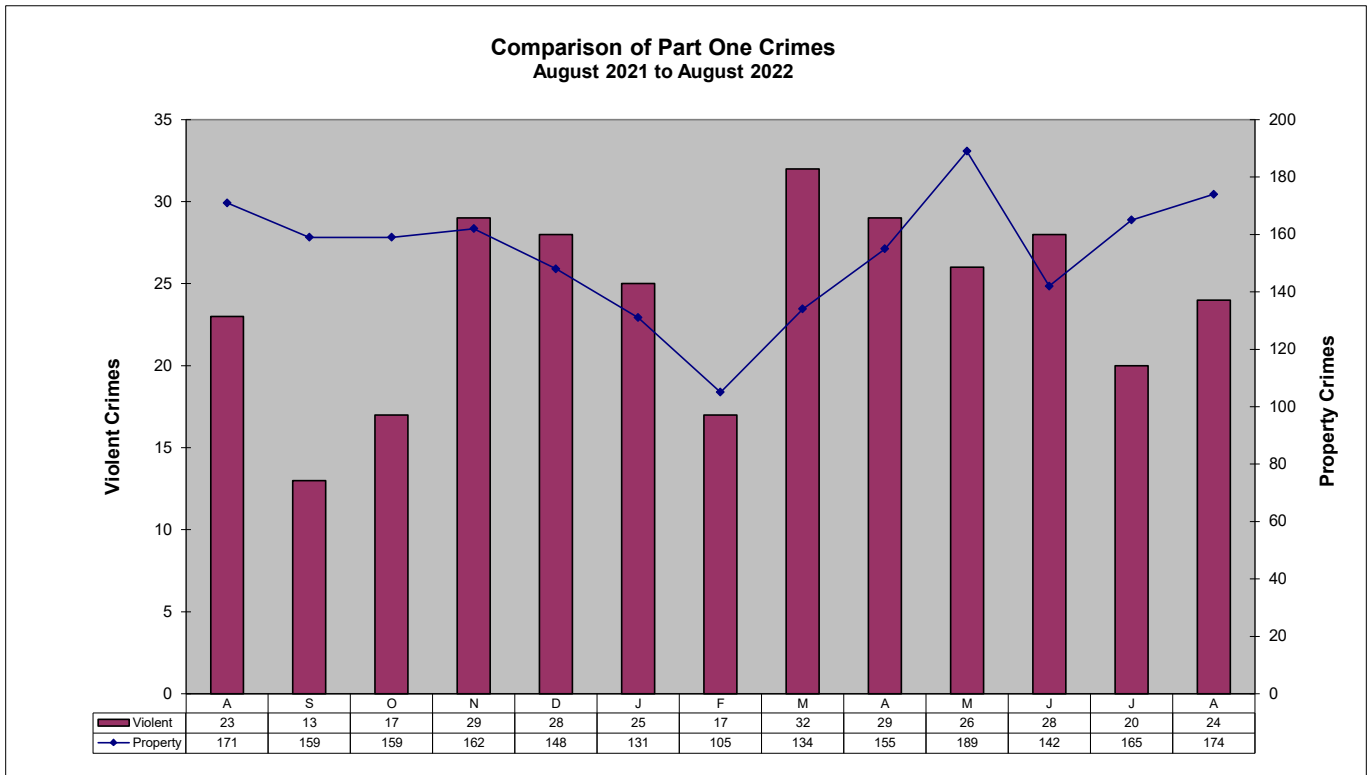
August 2022



*ad honorem*

## Part One Crime Summary August 2022

CRIME TYPE	Apr	May	June	July	August	YTD		%	CLEARED	% CLEARED	
						2022	2021	Change	2022	2022	2021
HOMICIDE*	0	0	1	0	0	3	2	50%	3	100%	100%
SEX OFFENSES	10	10	6	10	8	76	48	58%	35	46%	42%
SEX ASSAULTS	7	3	1	2	3	30	25	20%	18	60%	39%
ROBBERY*	8	6	3	2	2	29	28	4%	9	31%	39%
AGG ASSAULT*	11	10	18	8	14	93	75	24%	61	66%	12%
BURGLARY	10	7	10	10	7	61	66	-8%	23	38%	18%
LARC THEFT	140	172	123	151	164	1075	966	11%	400	37%	31%
GTA	4	5	9	4	3	49	51	-4%	21	43%	35%
<b>VIOLENT*</b>	<b>29</b>	<b>26</b>	<b>28</b>	<b>20</b>	<b>24</b>	<b>201</b>	<b>153</b>	<b>31%</b>	<b>108</b>	<b>54%</b>	<b>49%</b>
<b>PROPERTY</b>	<b>155</b>	<b>189</b>	<b>142</b>	<b>165</b>	<b>174</b>	<b>1195</b>	<b>1081</b>	<b>11%</b>	<b>429</b>	<b>36%</b>	<b>28%</b>
<b>GRAND TOTAL</b>	<b>184</b>	<b>215</b>	<b>170</b>	<b>185</b>	<b>198</b>	<b>1396</b>	<b>1234</b>	<b>13%</b>	<b>537</b>	<b>38%</b>	<b>31%</b>
ARSON	1	5	0	0	0	10	3	233%	6	60%	33%

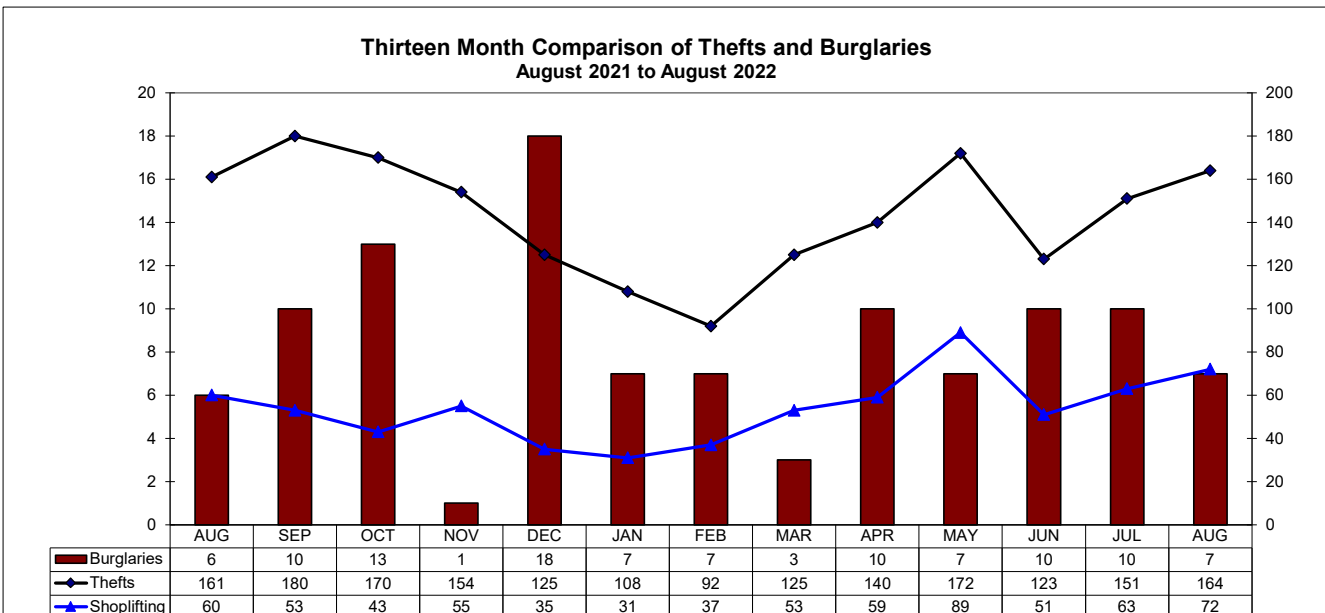
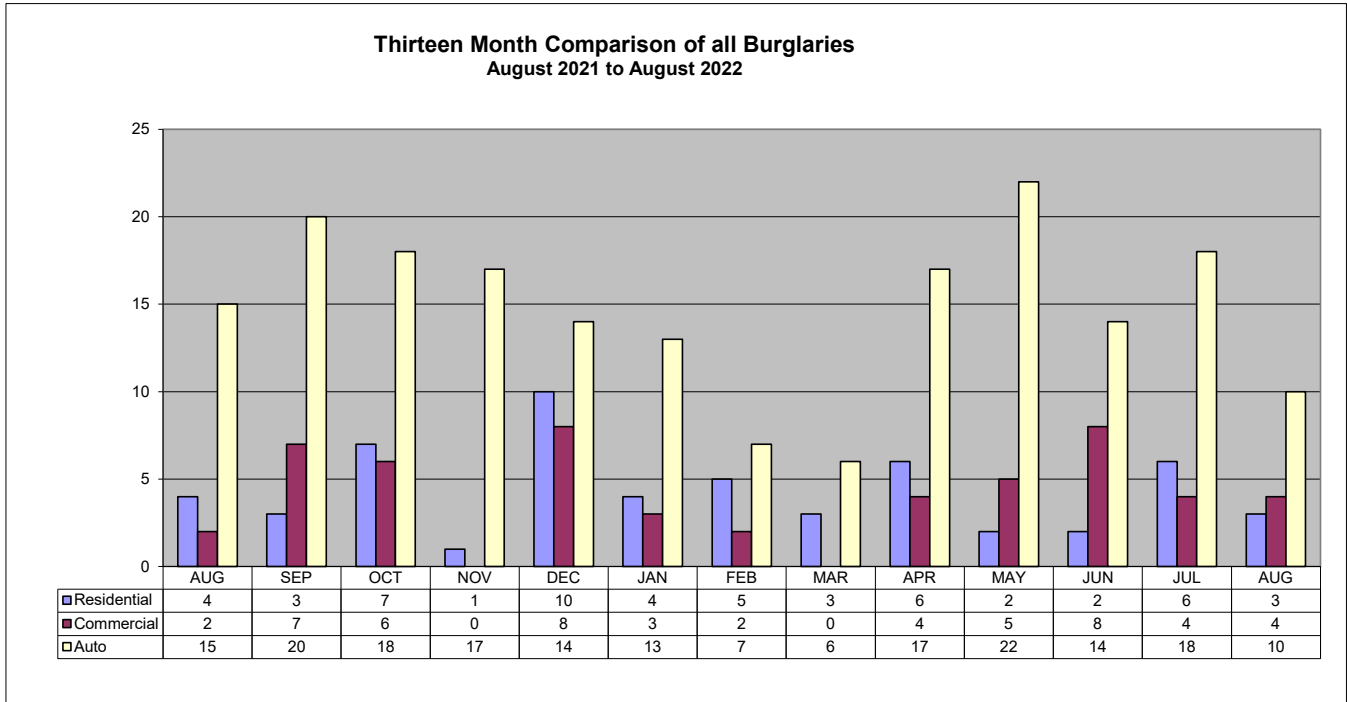


# Patrol Activity / Goals

## August 2022

ACTIVITY TYPE	Apr	May	June	July	August	YTD 2022	YTD 2021	% Change
Robberies	8	6	3	2	2	29	28	4%
Total Burglaries	10	7	10	10	7	61	66	-8%
Res Burglaries	6	2	2	6	3	31	35	-11%
Comm Burglaries	4	5	8	4	4	30	31	-3%
Auto Burglaries	17	22	14	18	10	107	96	11%
Shoplifting	59	89	51	63	72	455	321	42%
Citations/Warnings	921	966	611	503	631	6,105	7,973	-23%
DUI Arrests	47	42	54	46	42	339	401	-15%
Collisions	220	206	194	215	179	1,643	1,671	-2%

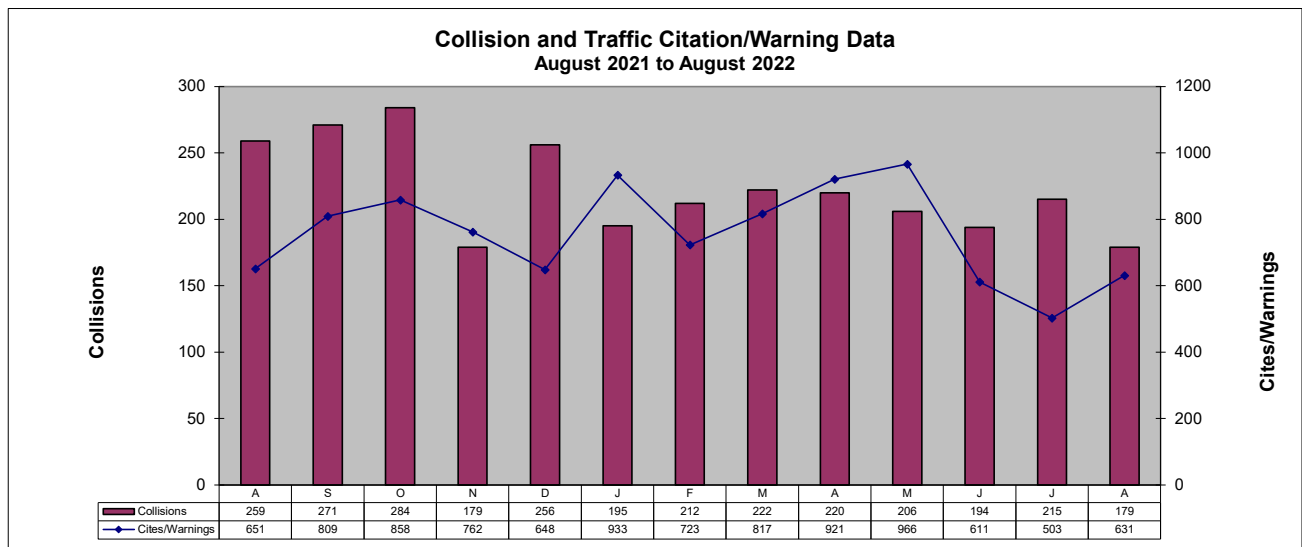
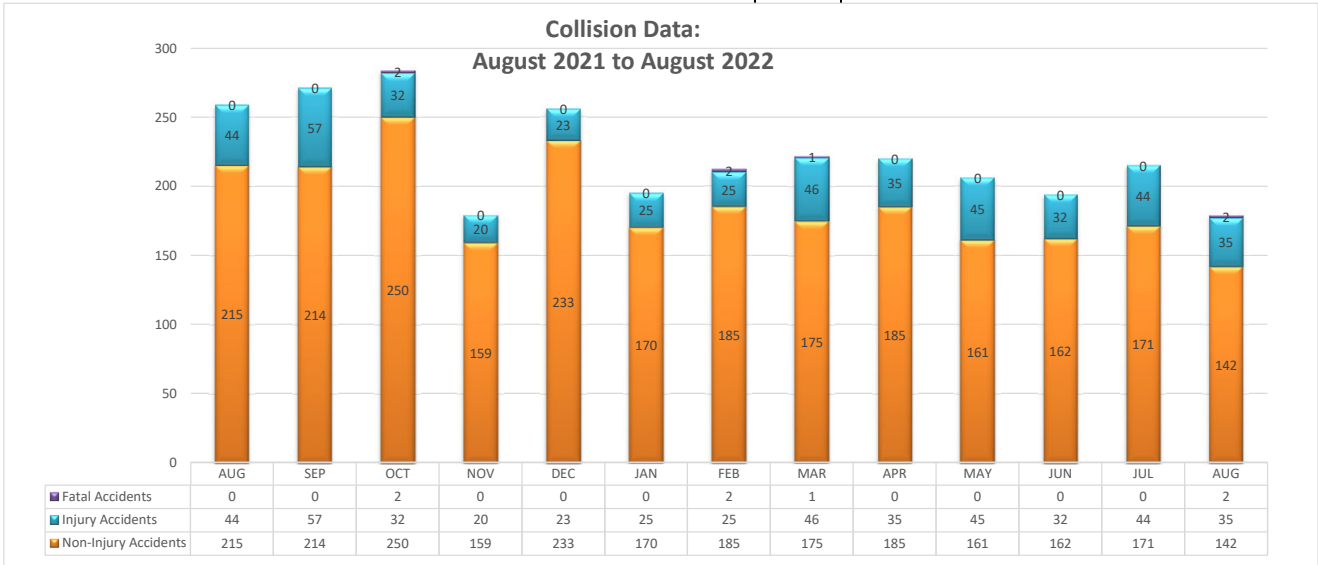
**NOTE: In addition to the 42 DUI arrests, 12 are pending blood results.**



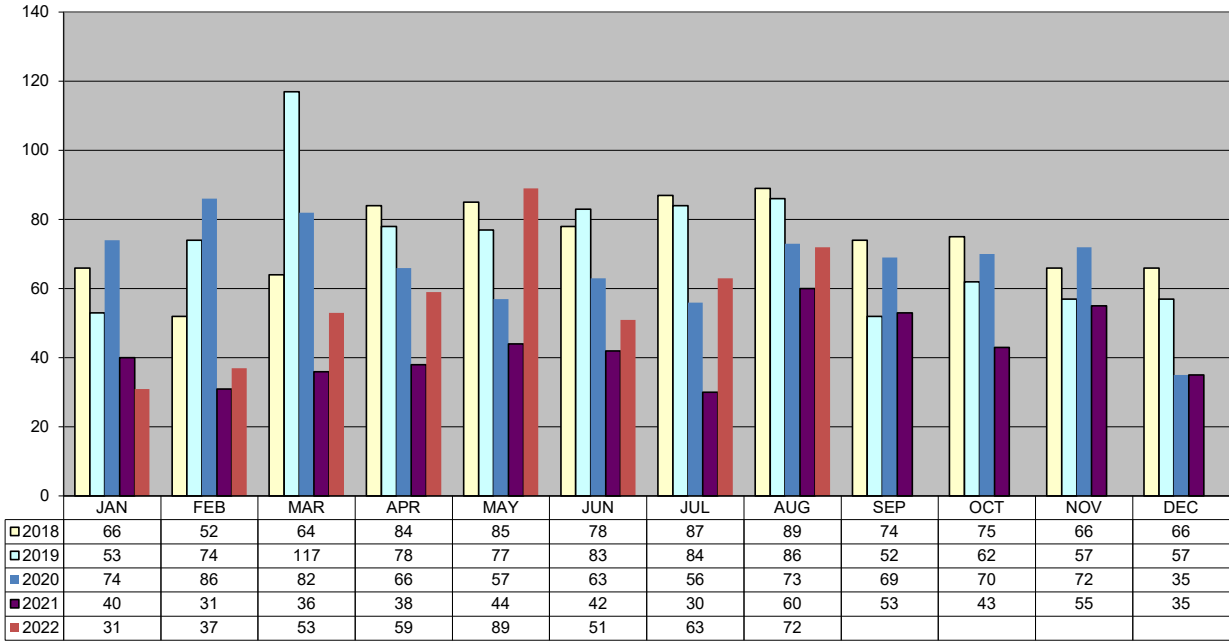
# TRAFFIC DATA

## August 2022

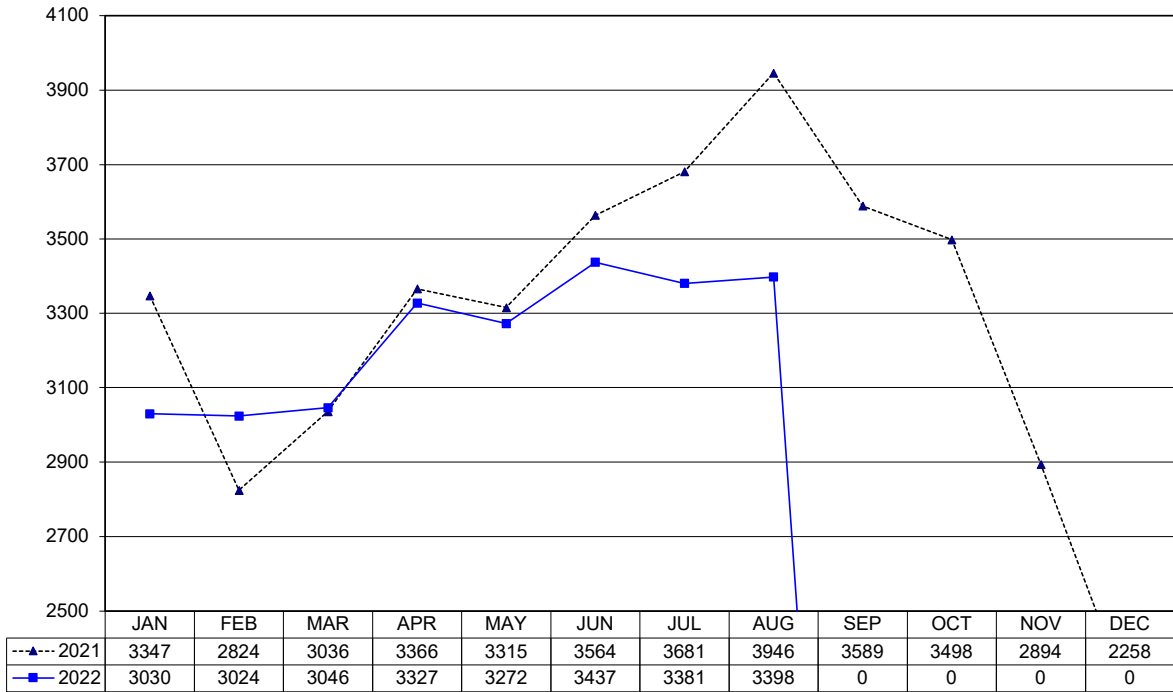
ACTIVITY TYPE	Apr	May	June	July	August	YTD 2022	YTD 2021	% Change
	Non-Injury Collisions	185	161	162	171	142	1,351	1,416
Injury Collisions	35	45	32	44	35	287	248	16%
Fatal Collisions	0	0	0	0	2	5	7	-29%
Private Property Collisions	59	53	52	60	55	465	503	-8%
DUI Related Collisions	6	7	3	10	8	52	59	-12%
DUI (Total)	47	42	54	46	42	339	401	-15%
DUI (Alcohol)	46	42	52	44	39	327	231	42%
DUI (Drugs)	1	0	2	2	3	12	15	-20%
Traffic Citations	317	188	182	150	174	1,722	2,832	-39%
Warnings	604	432	429	353	457	4,037	5,141	-21%
Parking Citations	23	8	17	14	19	244	286	-15%
All Traffic Stops	921	812	819	727	900	7,321	10,073	-27%
Traffic Stops-No Enfor	78	66	68	50	54	489	1,048	-53%
30-Day Impounds	5	15	16	8	6	89	126	-29%



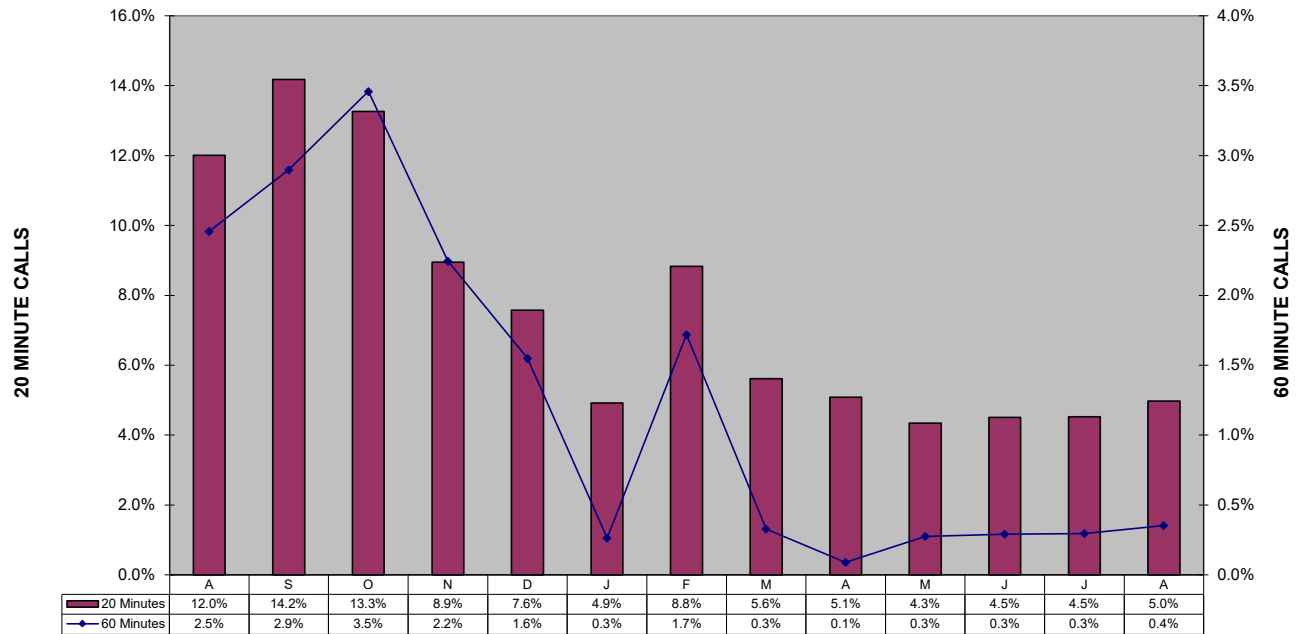
### Shoplifting 5-Year Comparison



### Police Calls for Service - 12 Month Trend August 2022

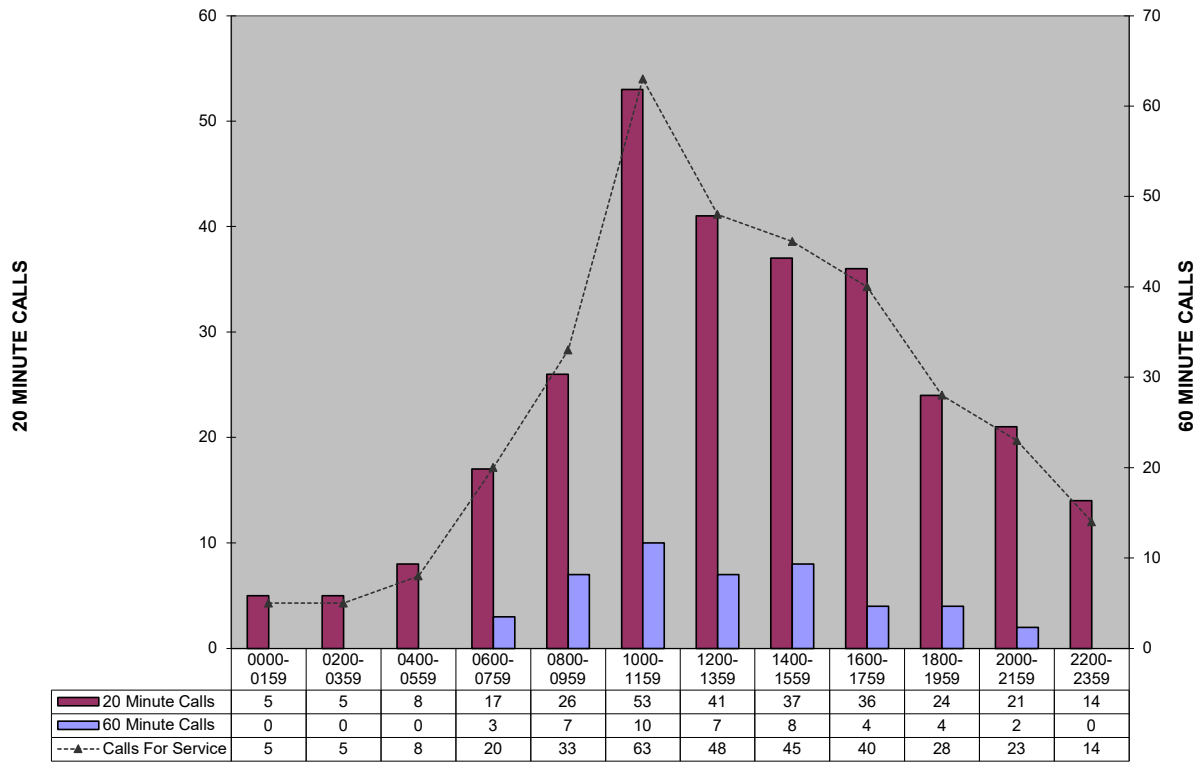


**Percent of Police Calls Held 20 and 60 Minutes  
August 2021 to August 2022**

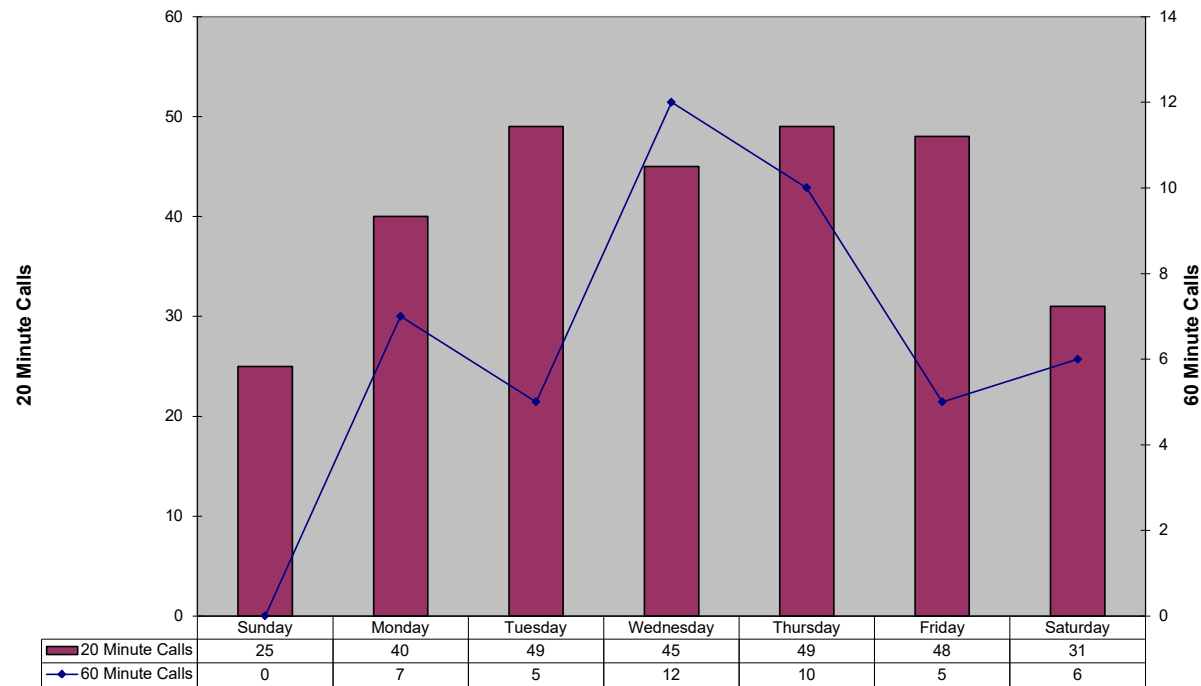


This section intentionally left blank.

### 20 and 60 Minute Calls Held by Time of Day (This custom report is being configured)

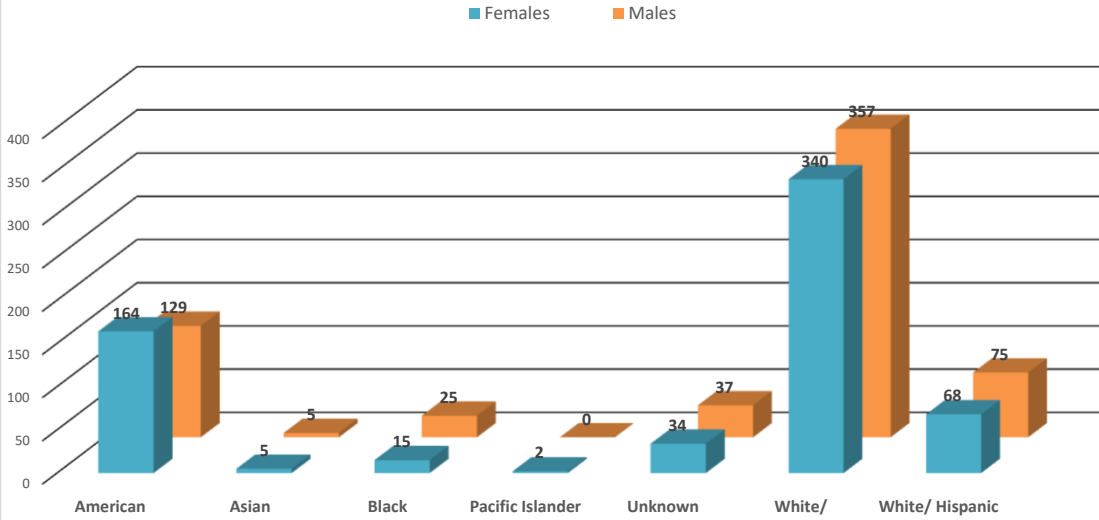


### 20 and 60 Minute Calls Holding by Day of Week (This custom report is being configured)



In an effort to be more transparent, we have started presenting arrest and victimization rates year to date. These statistics are currently being impacted by trends related to the Covid -19 pandemic. Flagstaff has seen less visitation and tourism, and a reduction in our college student population. This has positively manifested itself in reduced criminality and arrests in some areas. Our community is one of only a few that has provided additional housing options for homeless populations. This has drawn more homeless individuals to Flagstaff. Unfortunately, we continue to see Native American members of our homeless population over-represented in both arrest and victimization data. Many of these arrests are on those who are not City residents, and many of these arrests are of repeat offenders.

### August 2022 Year To Date: Felony Incidents- Victims by Race

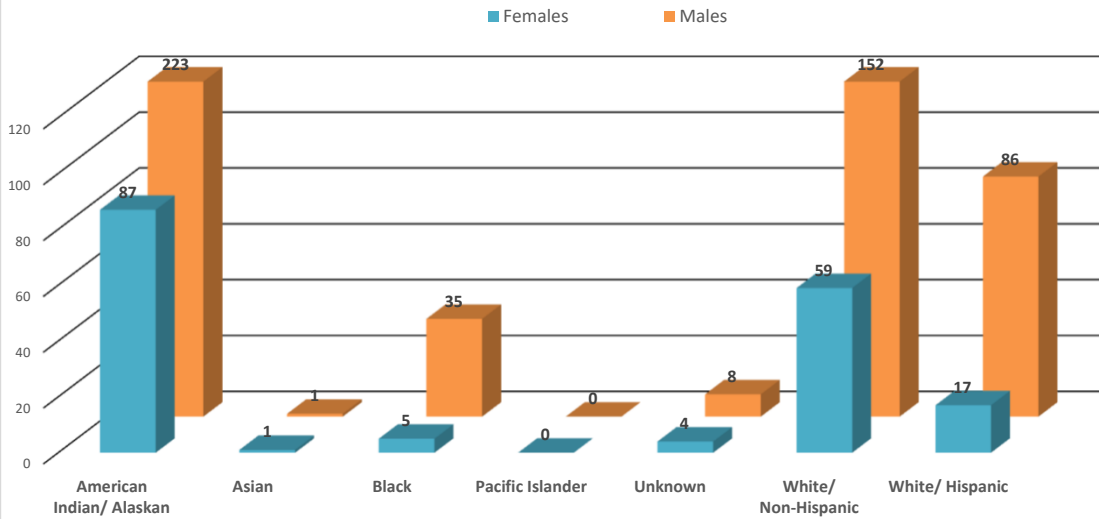


\*This data is representative of a single, victim by race/ethnicity, in a single incident only. There may be multiple victims of the same race/ethnicity within that incident, but that data is not captured or displayed above.

\*\*If there are multiple victims within the same incident, that have a different race/ethnicity, those differing races/ethnicities are identified and displayed above.

\*\*\*If the same individual has been the victim of different incidents, that data is captured and displayed above.

### August 2022 Year To Date: Felony Arrests by Race

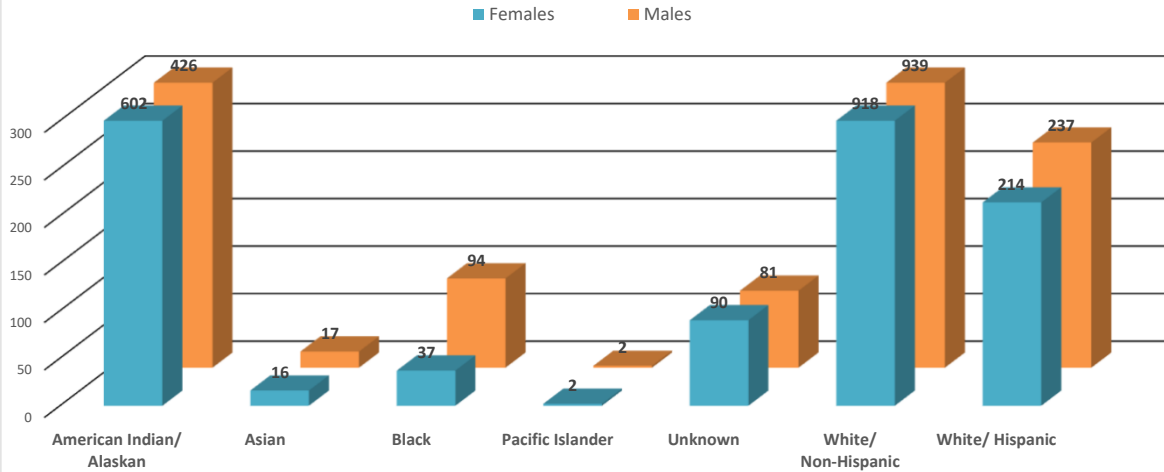


\*This data is representative of a single, individual arrest by incident only; these numbers do not reflect the total number of charges from a single incident.

\*\*There may be individuals who have been arrested for different incidents; if the same person is arrested for a different incident (generally different time/date/location), that information is captured and displayed on the above chart.

In an effort to be more transparent, we have started presenting arrest and victimization rates year to date. These statistics are currently being impacted by trends related to the Covid -19 pandemic. Flagstaff has seen less visitation and tourism, and a reduction in our college student population. This has positively manifested itself in reduced criminality and arrests in some areas. Our community is one of only a few that has provided additional housing options for homeless populations. This has drawn more homeless individuals to Flagstaff. Unfortunately, we continue to see Native American members of our homeless population over-represented in both arrest and victimization data. Many of these arrests are on those who are not City residents, and many of these arrests are of repeat offenders.

### August 2022 Year To Date: Misdemeanor Incidents- Victims by Race

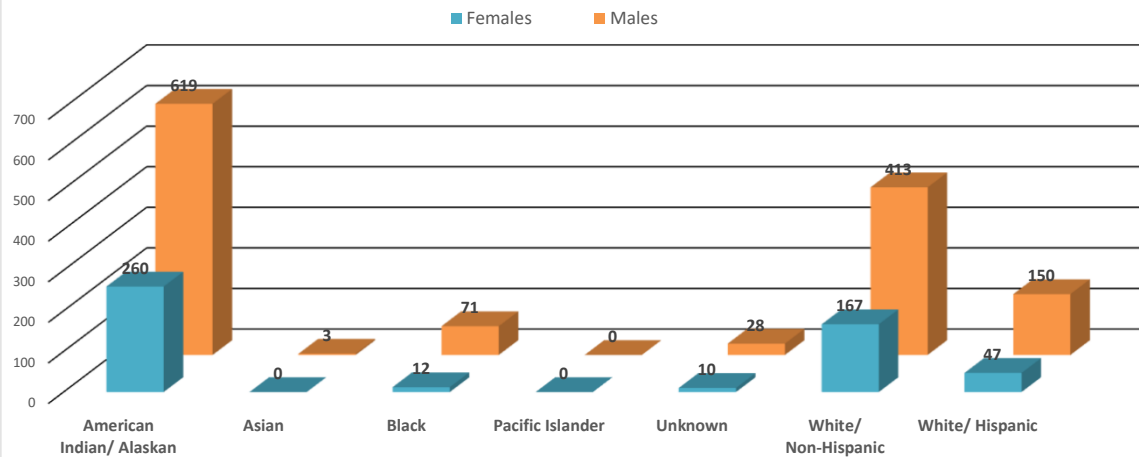


\*This data is representative of a single, victim by race/ethnicity, in a single incident only. There may be multiple victims of the same race/ethnicity within that incident, but that data is not captured or displayed above.

\*\*If there are multiple victims within the same incident, that have a different race/ethnicity, those differering races/ethnicities are identified and displayed above.

\*\*\*If the same individual has been the victim of different incidents, that data is captured and displayed above.

### August 2022 Year To Date: Misdemeanor Arrests by Race



\*This data is representative of a single, individual arrest by incident only; these numbers do not reflect the total number of charges from a single incident.

\*\*There may be individuals who have been arrested for different incidents; if the same person is arrested for a different incident (generally different time/date/location), that information is captured and displayed on the above chart.





**FLAGSTAFF POLICE DEPARTMENT MONTHLY REPORT**  
**August 2022**

	August	Y.T.D. 2022	Y.T.D. 2021	% CHANGE
<b>CALLS FOR SERVICE (TOTAL)</b>	6815	49968	52239	-4.3%
1. Police	3398	25915	27079	-4.3%
2. Sheriff	1609	11296	12290	-8.1%
3. City Fire	1556	10458	10582	-1.2%
4. Rural Fire	304	2266	2138	6.0%
5. Forest Service	8	72	119	-39.5%
6. US NPS	1	22	31	
<b>REPORTS TAKEN (TOTAL)</b>	1510	11687	11316	3.3%
1. Misdemeanor	716	5182	4990	3.8%
2. Felony	233	1721	1763	-2.4%
3. Incident	561	4784	4563	4.8%
Accident	179	1643	1671	-1.7%
Incident - no report	1888	16155	15392	5.0%
Short Form Reports	9	94	180	-47.8%
Violent Crimes	24	201	153	31.4%
Property Crimes	174	1195	1081	10.5%
<b>ARRESTS (TOTAL)</b>	357	2759	3045	-9.4%
1. Misdemeanor arrests	266	2032	2315	-12.2%
2. Felony Arrests	91	682	730	-6.6%
In-Custody Bookings	263	1786	2343	-23.8%
Juvenile Arrests	0	38	26	46.2%
Juvenile Referrals	14	72	49	46.9%
Warrant Arrests	42	291	220	32.3%
<b>TRAFFIC ACCIDENTS (TOTAL)</b>				
<b>Includes Private Property</b>	179	1643	1671	-1.7%
1. Non-Injury Accidents	142	1351	1416	-4.6%
2. Injury Accidents	35	287	248	15.7%
3. Fatal Accidents	2	5	7	200.0%
Private Property Accidents	55	465	503	-7.6%
DUI Related Accidents	8	53	59	-10.2%
<b>CITATIONS ISSUED (TOTAL)</b>	354	3051	4419	-31.0%
1. Traffic	174	1722	2832	-39.2%
D.U.I.'s	42	339	401	-15.5%
2. Criminal (Non-Traffic)	180	1329	1587	-16.3%
<b>WARNING &amp; REPAIR ORDERS</b>	457	4037	5141	-21.5%
<b>FIELD I.D. CARDS</b>	360	3361	5781	-41.9%
<b>PI CONTACTS</b>	81	822	1779	-53.8%
<b>DETECTIVES</b>				
1. Cases Assigned	310	2168	2092	3.6%
2. Cases Cleared	170	1098	1132	-3.0%
3. Clearance Rate	55%	50.6%	54.1%	-3.5%
<b>DOMESTIC VIOLENCE</b>				
1. Incidents Reported	152	1347	1160	16.1%
a. Misdemeanor	130	1123	990	13.4%
b. Felony	22	224	170	31.8%
2. Arrests	55	455	423	7.6%

Shaded areas indicate YTD adjustments



**FLAGSTAFF POLICE DEPARTMENT MONTHLY REPORT**  
**August 2022**

	August	Y.T.D. 2022	Y.T.D. 2021	% CHANGE
<b>COMMUNITY RELATIONS &amp; TRAINING</b>				
1. Public Speaking Presentations Includes Media Releases	97	671	647	3.7%
2. Training - Total Hours	2946	19538.5	11494.5	70.0%
Academy	1728	7280	4008	81.6%
Field Training	864	6768	3371.5	100.7%
Advance Officer Training	354	5490.5	4413	24.4%
3. Volunteer Hours	89.75	486	1080.25	-55.0%
4. Community Support Mtg.	20	160	388	-58.8%
<b>ANIMAL CONTROL (PATROL)</b>				
1. Impounds	52	240	223	7.6%
2. Citations	0	0	13	-100.0%
<b>PATROL HOURS IN FIELD</b>	<b>9,173</b>	<b>73010.75</b>	<b>81202</b>	<b>-10.1%</b>

<b>PERSONNEL</b>	<b>Field Operations</b>	<b>Support Services</b>		
1. Authorized Strength	119	57		
2. Actual Strength	108	43		
3. Resignations or Terminations	2	1		
4. New Hires	0	3		

This section intentionally left blank.