

CompStat Report

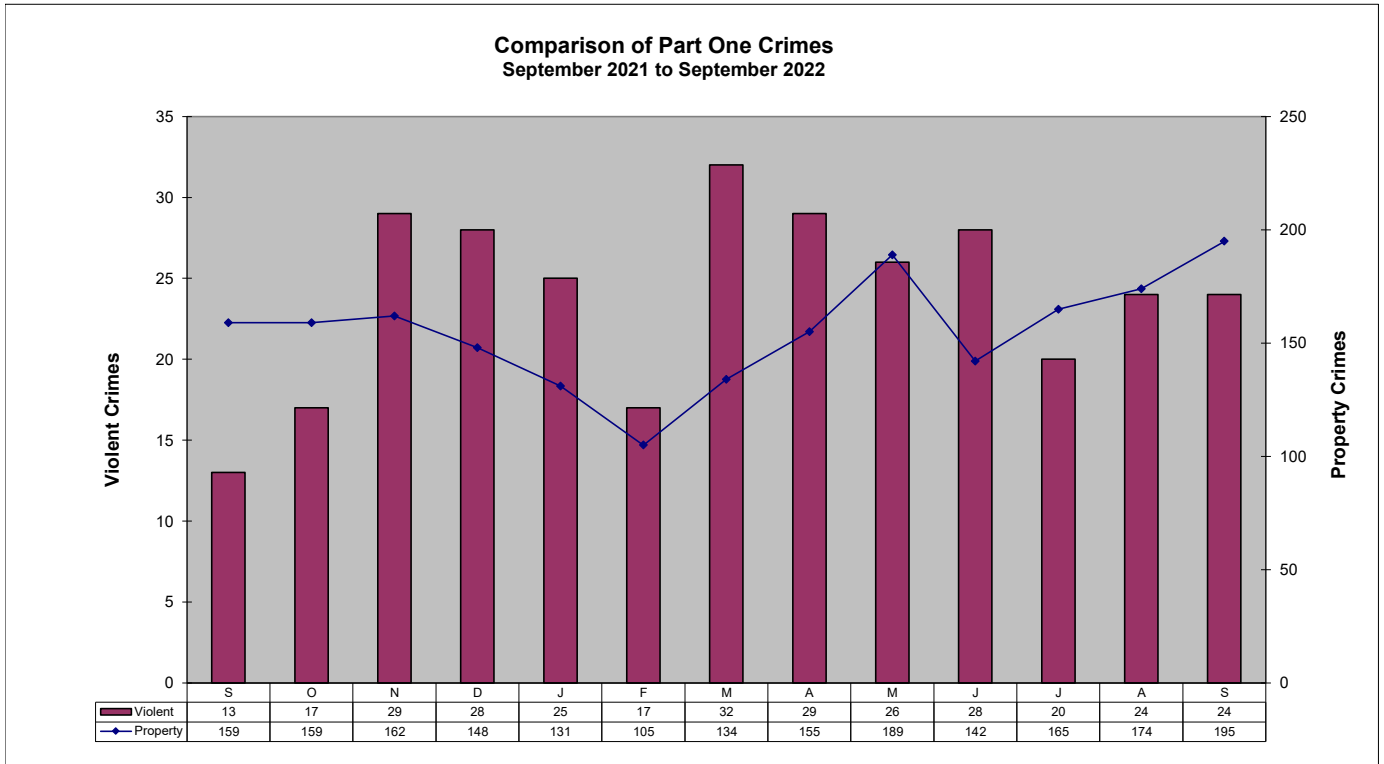
FLAGSTAFF POLICE DEPARTMENT
September 2022



ad honorem

Part One Crime Summary September 2022

CRIME TYPE	May	June	July	August	September	YTD		%	CLEARED	% CLEARED	
						2022	2021	Change	2022	2022	2021
HOMICIDE*	0	1	0	0	1	4	2	100%	4	100%	100%
SEX OFFENSES	10	6	10	8	7	83	51	63%	0	0%	41%
SEX ASSAULTS	3	1	2	3	5	35	26	35%	19	54%	39%
ROBBERY*	6	3	2	2	6	35	31	13%	12	34%	11%
AGG ASSAULT*	10	18	8	14	10	103	82	26%	66	64%	126%
BURGLARY	7	10	10	7	9	70	76	-8%	27	39%	17%
LARC THEFT	172	123	151	164	186	1261	1146	10%	440	35%	29%
GTA	5	9	4	3	0	49	55	-11%	21	43%	33%
VIOLENT*	26	28	20	24	24	225	166	36%	82	36%	48%
PROPERTY	189	142	165	174	195	1390	1240	12%	473	34%	28%
GRAND TOTAL	215	170	185	198	219	1615	1406	15%	555	34%	30%
ARSON	5	0	0	0	0	10	3	233%	6	60%	33%

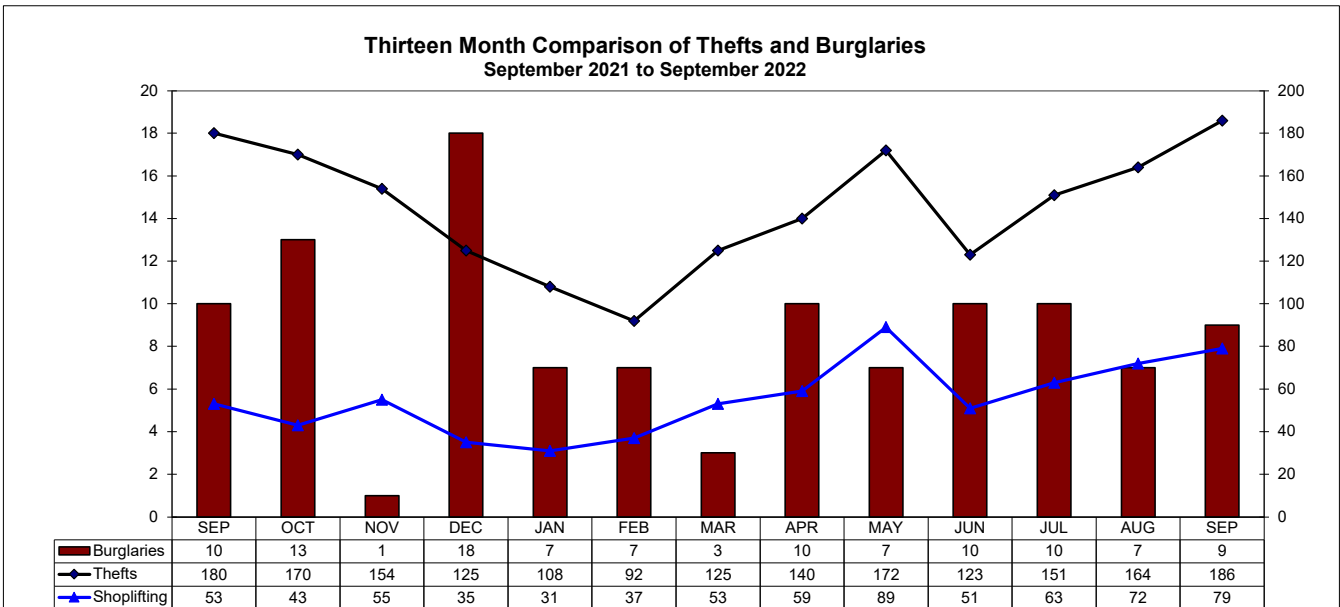
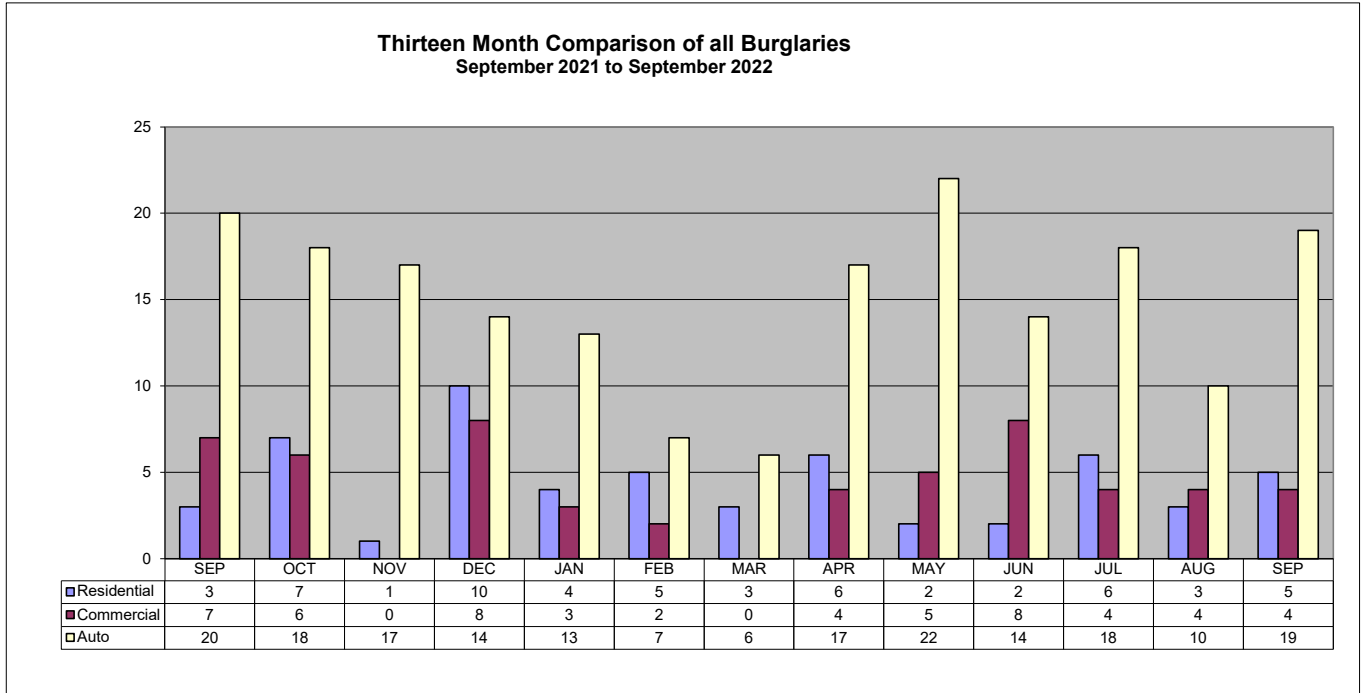


Patrol Activity / Goals

September 2022

ACTIVITY TYPE	May	June	July	August	September	YTD 2022	YTD 2021	% Change
	Robberies	6	3	2	2			
Total Burglaries	7	10	10	7	9	70	76	-8%
Res Burglaries	2	2	6	3	5	36	38	-5%
Comm Burglaries	5	8	4	4	4	34	38	-11%
Auto Burglaries	22	14	18	10	19	126	116	9%
Shoplifting	89	51	63	72	79	534	374	43%
Citations/Warnings	966	611	503	631	559	6,664	8,782	-24%
DUI Arrests	42	54	46	42	40	379	445	-15%
Collisions	206	194	215	179	237	1,643	1,942	-15%

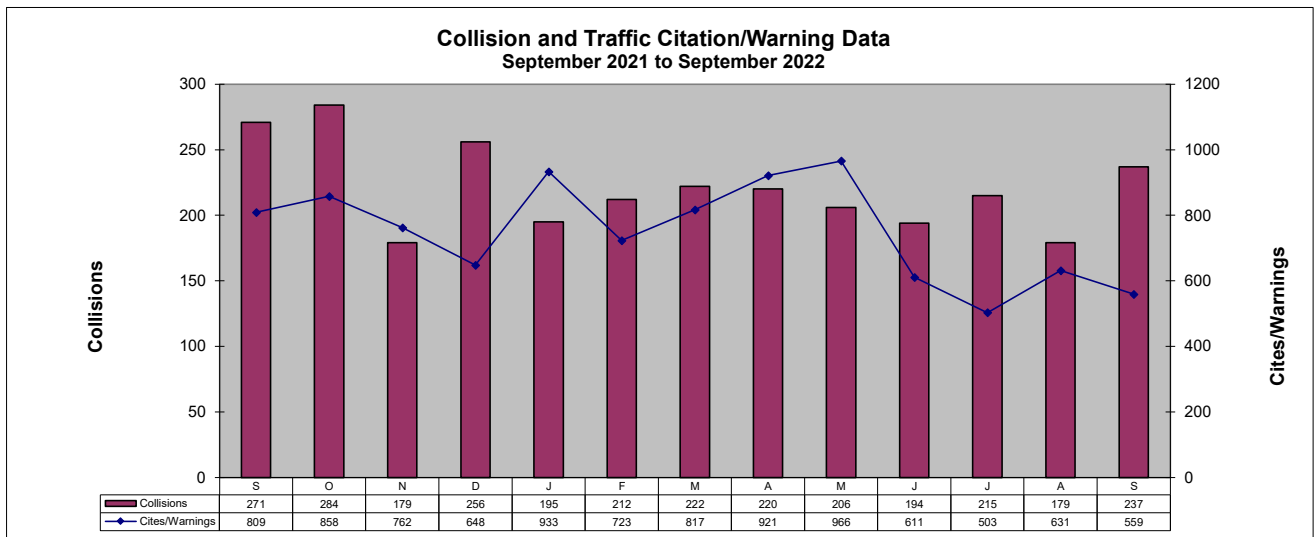
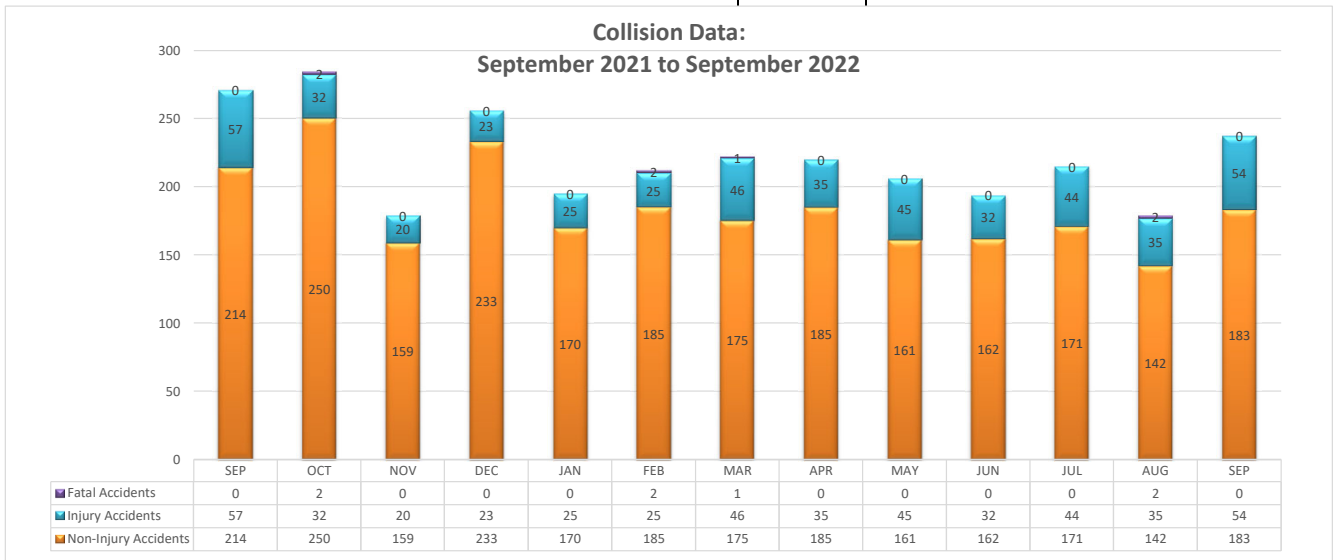
NOTE: In addition to the 40 DUI arrests, 13 are pending blood results.



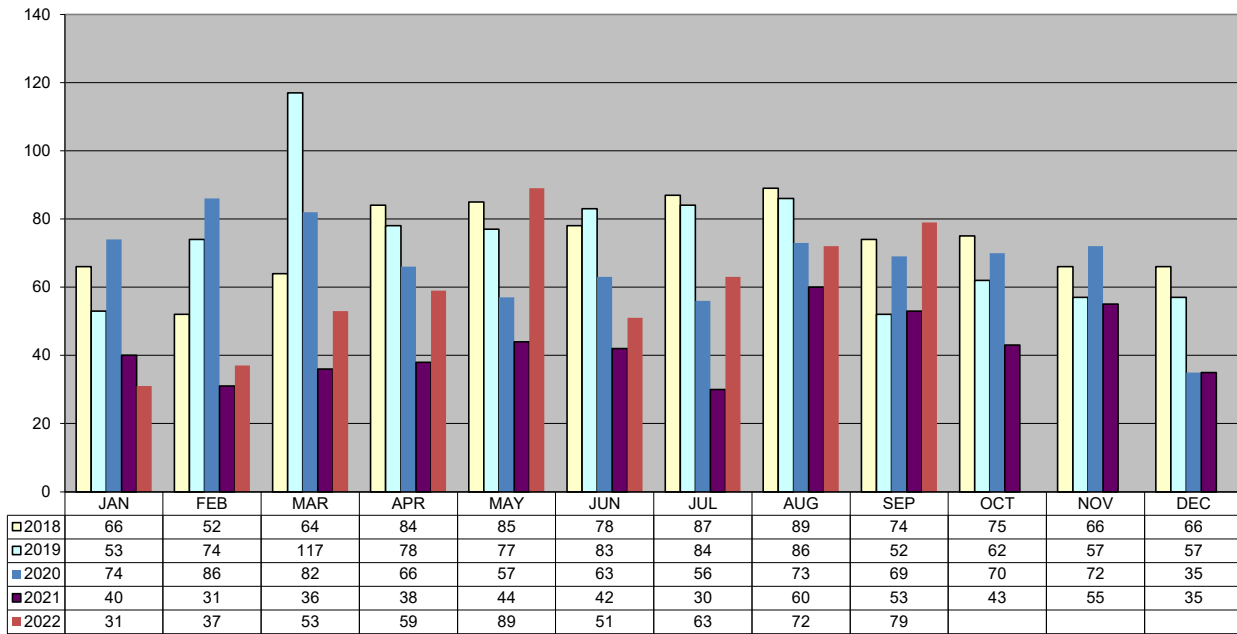
TRAFFIC DATA

September 2022

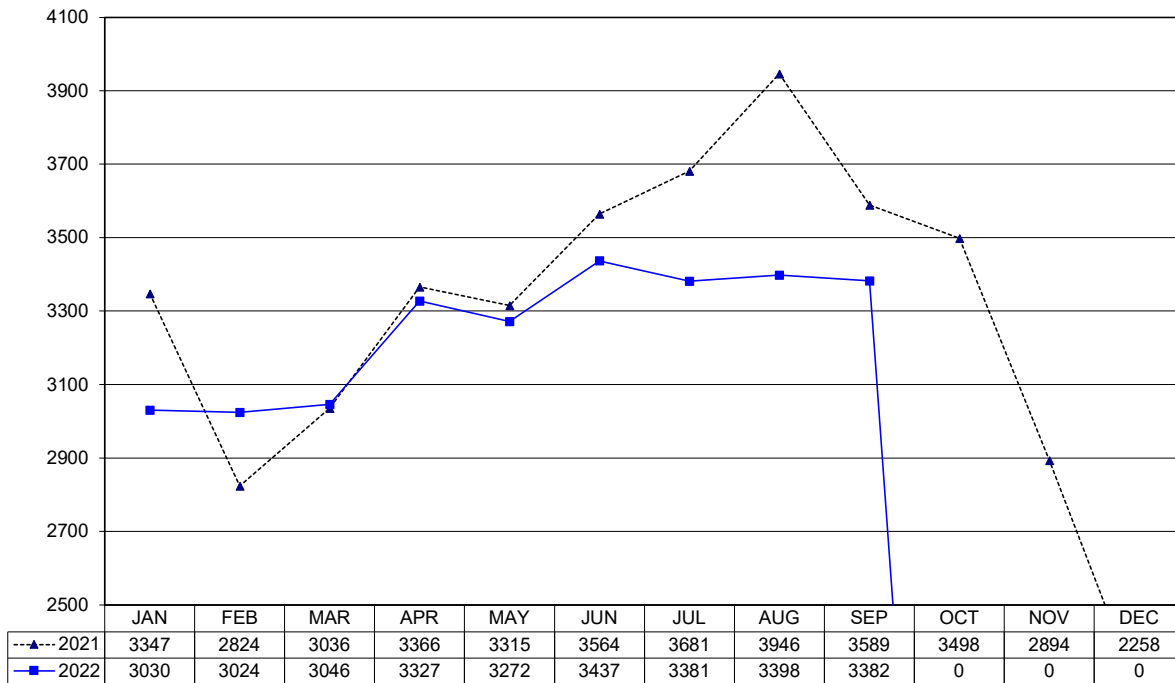
ACTIVITY TYPE	May	June	July	August	September	YTD 2022	YTD 2021	% Change
	Non-Injury Collisions	161	162	171	142	183	1,534	1,630
Injury Collisions	45	32	44	35	54	341	305	12%
Fatal Collisions	0	0	0	2	0	5	7	-29%
Private Property Collisions	53	52	60	55	49	514	587	-12%
DUI Related Collisions	7	3	10	8	4	56	68	-18%
DUI (Total)	42	54	46	42	40	379	445	-15%
DUI (Alcohol)	42	52	44	39	39	366	227	
DUI (Drugs)	0	2	2	3	1	13	9	
Traffic Citations	188	182	150	174	185	1,907	3,100	-38%
Warnings	432	429	353	457	374	4,411	5,682	-22%
Parking Citations	8	17	14	19	39	283	301	-6%
All Traffic Stops	812	819	727	900	796	8,117	11,093	-27%
Traffic Stops-No Enfor	66	68	50	54	50	539	1,211	-55%
30-Day Impounds	15	16	8	6	9	98	142	-31%



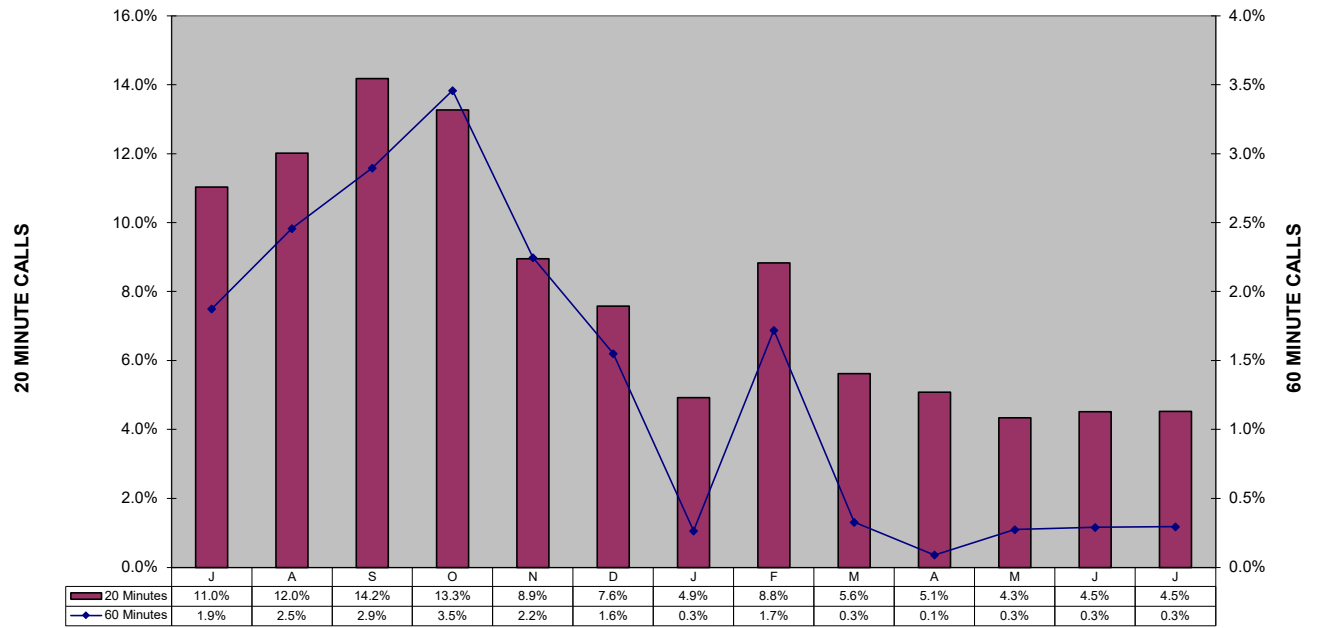
Shoplifting 5-Year Comparison



Police Calls for Service - 12 Month Trend September 2022

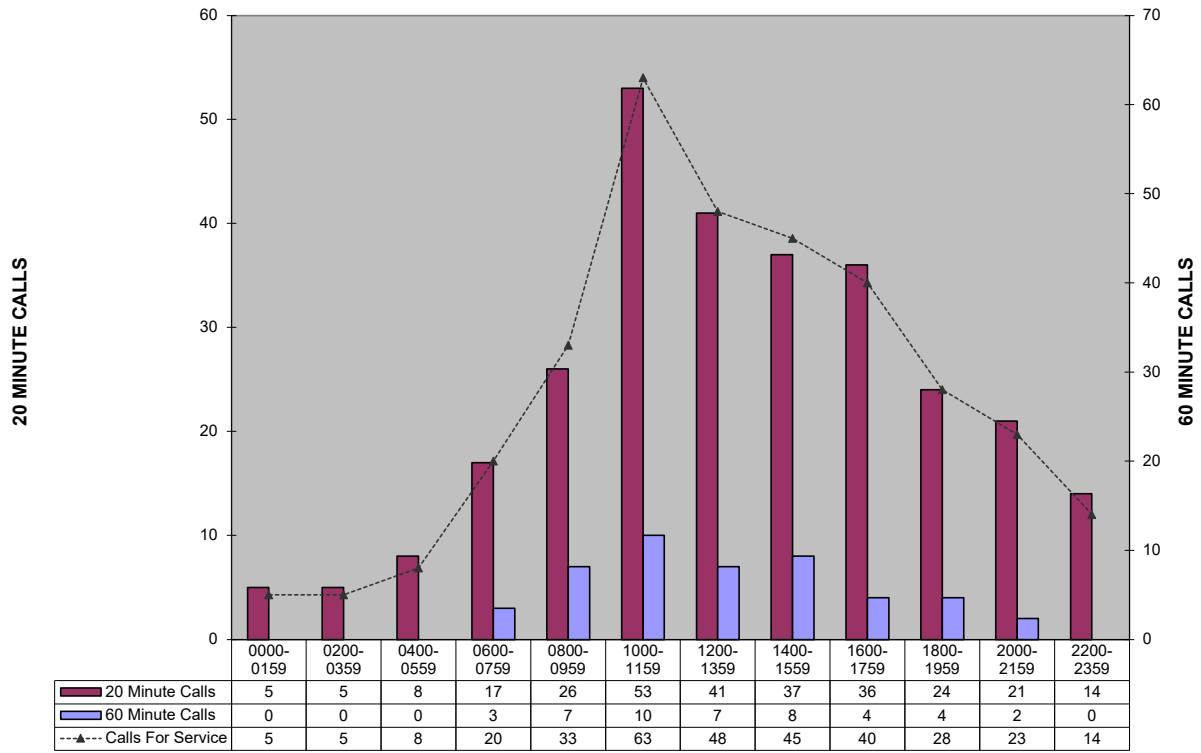


**Percent of Police Calls Held 20 and 60 Minutes
September 2021 to September 2022**

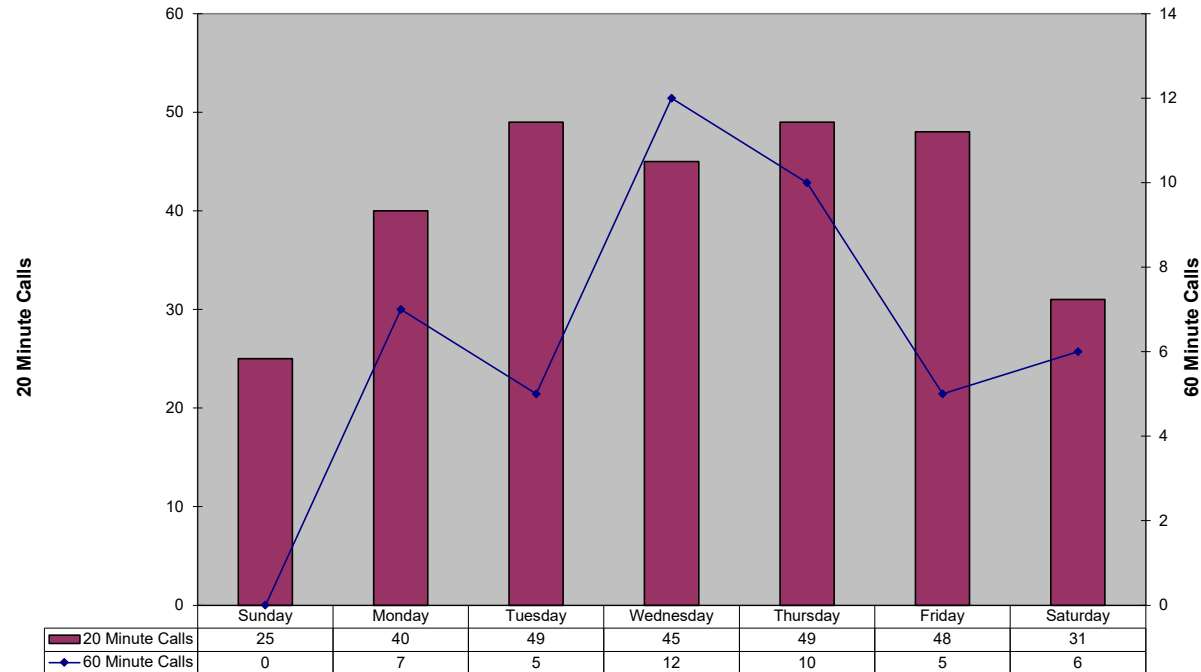


This section intentionally left blank.

20 and 60 Minute Calls Held by Time of Day (This custom report is being configured)

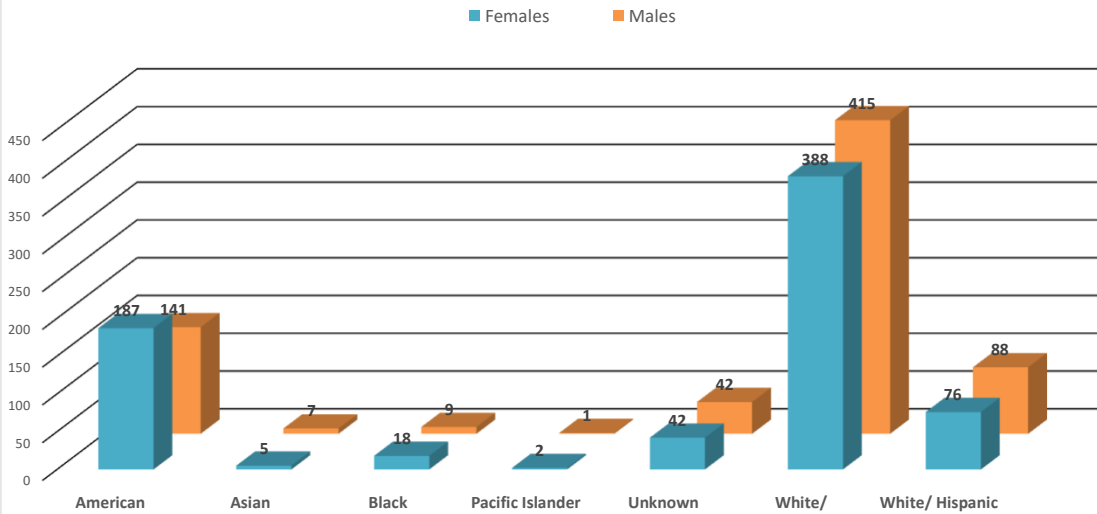


20 and 60 Minute Calls Holding by Day of Week (This custom report is being configured)



In an effort to be more transparent, we have started presenting arrest and victimization rates year to date. These statistics are currently being impacted by trends related to the Covid -19 pandemic. Flagstaff has seen less visitation and tourism, and a reduction in our college student population. This has positively manifested itself in reduced criminality and arrests in some areas. Our community is one of only a few that has provided additional housing options for homeless populations. This has drawn more homeless individuals to Flagstaff. Unfortunately, we continue to see Native American members of our homeless population over-represented in both arrest and victimization data. Many of these arrests are on those who are not City residents, and many of these arrests are of repeat offenders.

September 2022 Year To Date: Felony Incidents- Victims by Race

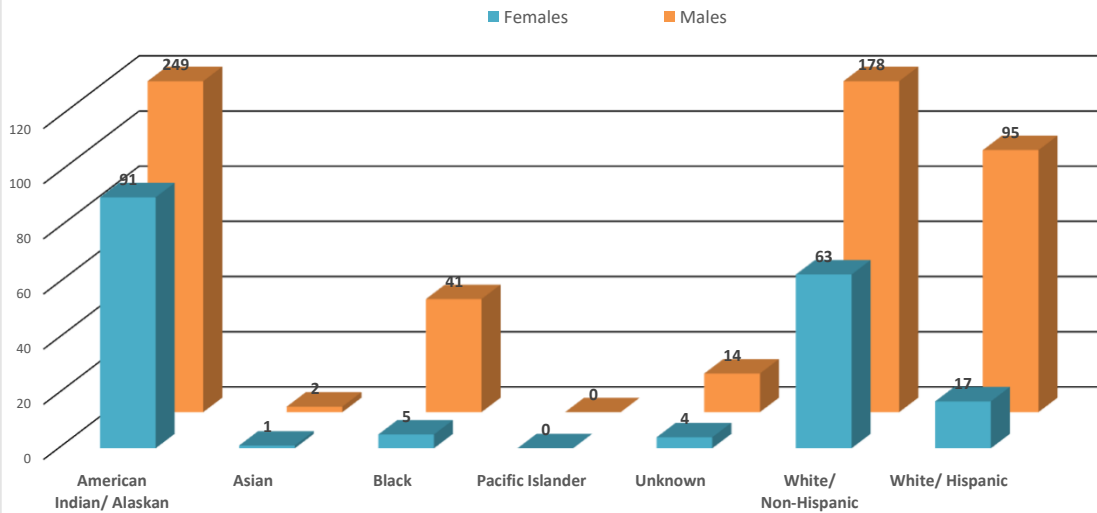


*This data is representative of a single, victim by race/ethnicity, in a single incident only. There may be multiple victims of the same race/ethnicity within that incident, but that data is not captured or displayed above.

**If there are multiple victims within the same incident, that have a different race/ethnicity, those differering races/ethnicities are identified and displayed above.

***If the same individual has been the victim of different incidents, that data is captured and displayed above.

September 2022 Year To Date: Felony Arrests by Race

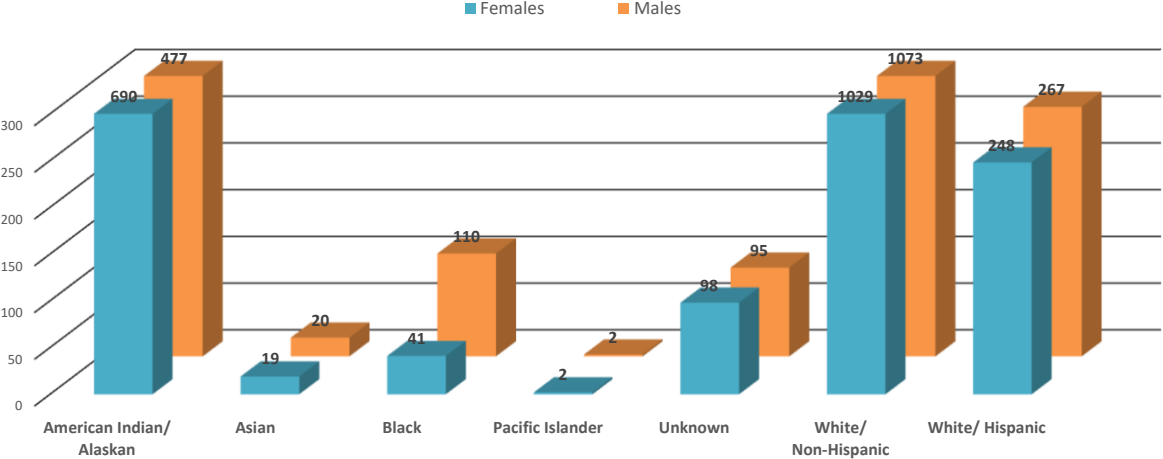


*This data is representative of a single, individual arrest by incident only; these numbers do not reflect the total number of charges from a single incident.

**There may be individuals who have been arrested for different incidents; if the same person is arrested for a different incident (generally different time/date/location), that information is captured and displayed on the above chart.

In an effort to be more transparent, we have started presenting arrest and victimization rates year to date. These statistics are currently being impacted by trends related to the Covid -19 pandemic. Flagstaff has seen less visitation and tourism, and a reduction in our college student population. This has positively manifested itself in reduced criminality and arrests in some areas. Our community is one of only a few that has provided additional housing options for homeless populations. This has drawn more homeless individuals to Flagstaff. Unfortunately, we continue to see Native American members of our homeless population over-represented in both arrest and victimization data. Many of these arrests are on those who are not City residents, and many of these arrests are of repeat offenders.

September 2022 Year To Date: Misdemeanor Incidents- Victims by Race

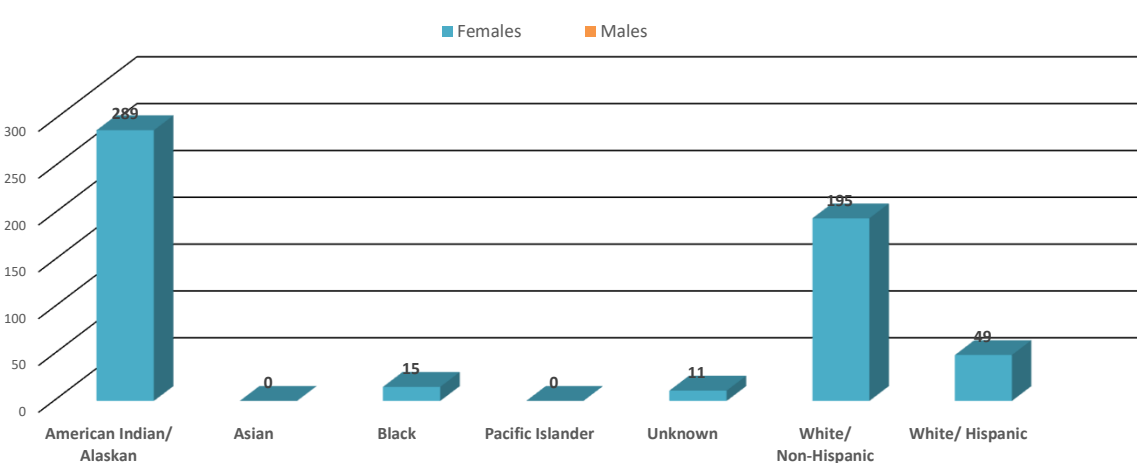


*This data is representative of a single, victim by race/ethnicity, in a single incident only. There may be multiple victims of the same race/ethnicity within that incident, but that data is not captured or displayed above.

**If there are multiple victims within the same incident, that have a different race/ethnicity, those differering races/ethnicities are identified and displayed above.

***If the same individual has been the victim of different incidents, that data is captured and displayed above.

September 2022 Year To Date: Misdemeanor Arrests by Race



*This data is representative of a single, individual arrest by incident only; these numbers do not reflect the total number of charges from a single incident.

**There may be individuals who have been arrested for different incidents; if the same person is arrested for a different incident (generally different time/date/location), that information is captured and displayed on the above chart.



FLAGSTAFF POLICE DEPARTMENT MONTHLY REPORT
September 2022

	September	Y.T.D. 2022	Y.T.D. 2021	% CHANGE
CALLS FOR SERVICE (TOTAL)	6582	56550	59154	-4.4%
1. Police	3382	29297	30668	-4.5%
2. Sheriff	1480	12776	13898	-8.1%
3. City Fire	1404	11862	11987	-1.0%
4. Rural Fire	303	2569	2443	5.2%
5. Forest Service	12	84	124	-32.3%
6. US NPS	1	23	31	
REPORTS TAKEN (TOTAL)	1563	13250	12905	2.7%
1. Misdemeanor	690	5872	5694	3.1%
2. Felony	232	1953	1976	-1.2%
3. Incident	641	5425	5235	3.6%
Accident	237	1880	1942	-3.2%
Incident - no report	1819	17974	17696	1.6%
Short Form Reports	14	108	200	-46.0%
Violent Crimes	24	225	166	35.5%
Property Crimes	195	1390	1240	12.1%
ARRESTS (TOTAL)	359	3118	3364	-7.3%
1. Misdemeanor arrests	277	2309	2564	-9.9%
2. Felony Arrests	82	764	800	-4.5%
In-Custody Bookings	279	2065	2610	-20.9%
Juvenile Arrests	6	44	29	51.7%
Juvenile Referrals	20	92	72	27.8%
Warrant Arrests	28	319	247	29.1%
TRAFFIC ACCIDENTS (TOTAL)				
Includes Private Property	237	1880	1942	-3.2%
1. Non-Injury Accidents	183	1534	1630	-5.9%
2. Injury Accidents	54	341	305	11.8%
3. Fatal Accidents	0	5	7	200.0%
Private Property Accidents	49	514	587	-12.4%
DUI Related Accidents	4	57	68	-16.2%
CITATIONS ISSUED (TOTAL)	379	3430	4877	-29.7%
1. Traffic	185	1907	3100	-38.5%
D.U.I.'s	40	379	445	-14.8%
2. Criminal (Non-Traffic)	194	1523	1777	-14.3%
WARNING & REPAIR ORDERS	374	4411	5682	-22.4%
FIELD I.D. CARDS	298	3659	6418	-43.0%
PI CONTACTS	68	890	1960	-54.6%
DETECTIVES				
1. Cases Assigned	286	2454	2347	4.6%
2. Cases Cleared	132	1230	1281	-4.0%
3. Clearance Rate	46%	50.1%	54.6%	-4.5%
DOMESTIC VIOLENCE				
1. Incidents Reported	129	1476	1302	13.4%
a. Misdemeanor	112	1235	1113	11.0%
b. Felony	17	241	189	27.5%
2. Arrests	50	505	472	7.0%

Shaded areas indicate YTD adjustments



FLAGSTAFF POLICE DEPARTMENT MONTHLY REPORT
September 2022

	September	Y.T.D. 2022	Y.T.D. 2021	% CHANGE
COMMUNITY RELATIONS & TRAINING				
1. Public Speaking Presentations Includes Media Releases	134	805	720	11.8%
2. Training - Total Hours	3102	22640.5	12406.5	82.5%
Academy	1984	9264	5416	71.0%
Field Training	744	7512	3899.5	92.6%
Advance Officer Training	374	5864.5	4778	22.7%
3. Volunteer Hours	171.75	657.75	1172.25	-43.9%
4. Community Support Mtg.	20	180	523	-65.6%
ANIMAL CONTROL (PATROL)				
1. Impounds	32	272	241	12.9%
2. Citations	0	0	13	-100.0%
PATROL HOURS IN FIELD	8,766	81776.75	89080	-8.2%

PERSONNEL	Field Operations	Support Services		
1. Authorized Strength	119	57		
2. Actual Strength	112	46		
3. Resignations or Terminations	2	4		
4. New Hires	6	2		

This section intentionally left blank.