

CompStat Report

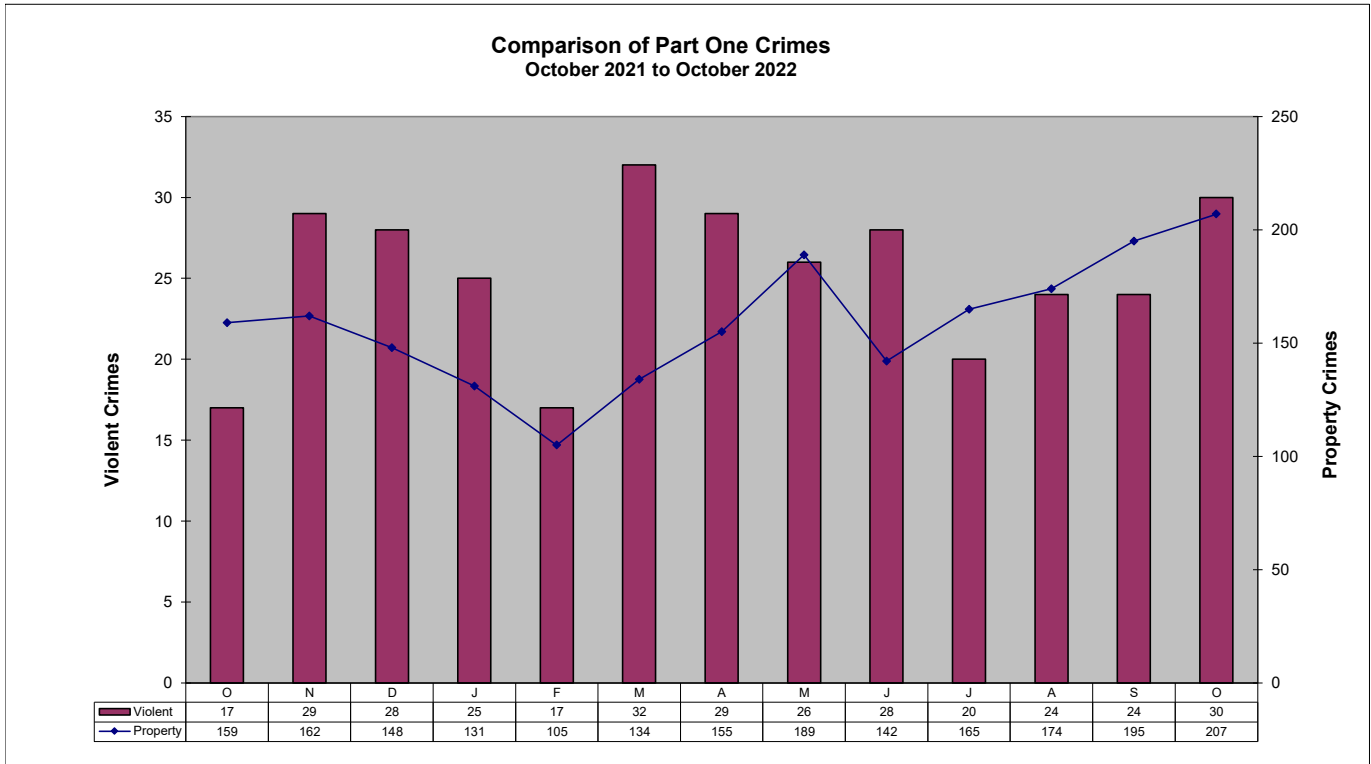
FLAGSTAFF POLICE DEPARTMENT
October 2022



ad honorem

Part One Crime Summary October 2022

CRIME TYPE	June	July	August	September	October	YTD		%	CLEARED	% CLEARED	
						2022	2021	Change	2022	2022	2021
HOMICIDE*	1	0	0	1	0	4	2	100%	4	100%	100%
SEX OFFENSES	6	10	8	7	10	93	57	63%	37	40%	39%
SEX ASSAULTS	1	2	3	5	6	41	30	37%	19	46%	41%
ROBBERY*	3	2	2	6	5	40	32	25%	15	38%	10%
AGG ASSAULT*	18	8	14	10	15	118	92	28%	75	64%	116%
BURGLARY	10	10	7	9	10	80	89	-10%	31	39%	19%
LARC THEFT	123	151	164	186	188	1449	1316	10%	489	34%	28%
GTA	9	4	3	0	8	57	63	-10%	24	42%	30%
VIOLENT*	28	20	24	24	30	255	183	39%	131	51%	46%
PROPERTY	142	165	174	195	207	1597	1399	14%	526	33%	27%
GRAND TOTAL	170	185	198	219	237	1852	1582	17%	657	35%	30%
ARSON	0	0	0	0	1	11	3	267%	6	55%	33%

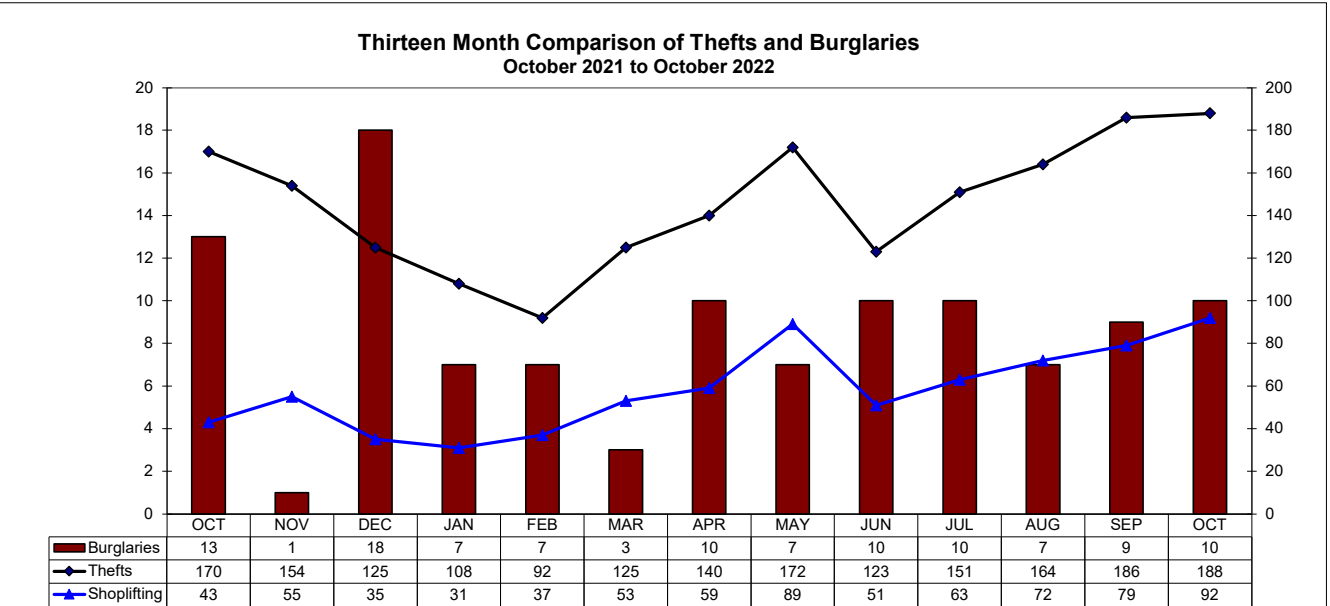
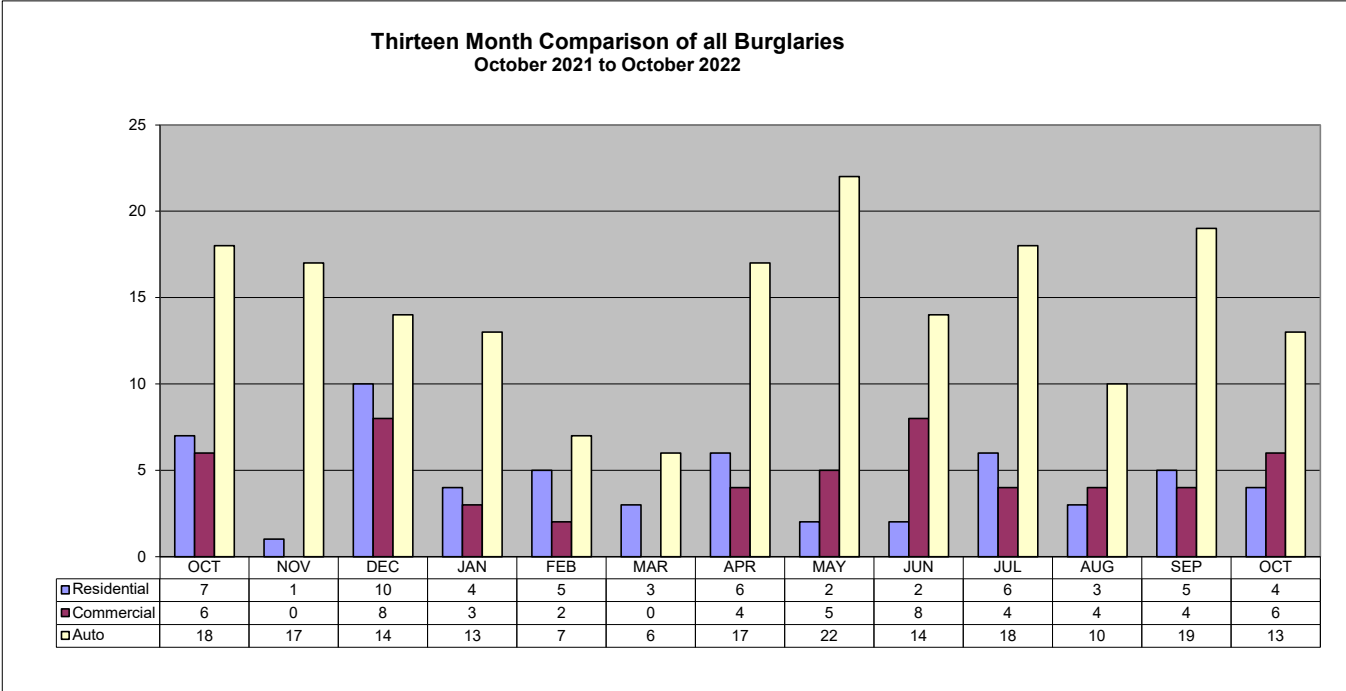


Patrol Activity / Goals

October 2022

ACTIVITY TYPE	June	July	August	September	October	YTD 2022	YTD 2021	% Change
	Robberies	3	2	2	6			
Total Burglaries	10	10	7	9	10	80	89	-10%
Res Burglaries	2	6	3	5	4	40	45	-11%
Comm Burglaries	8	4	4	4	6	40	44	-9%
Auto Burglaries	14	18	10	19	13	139	134	4%
Shoplifting	51	63	72	79	92	626	417	50%
Citations/Warnings	611	503	631	559	614	7,278	9,640	-25%
DUI Arrests	54	46	42	40	41	420	495	-15%
Collisions	194	215	179	237	261	2,141	2,226	-4%

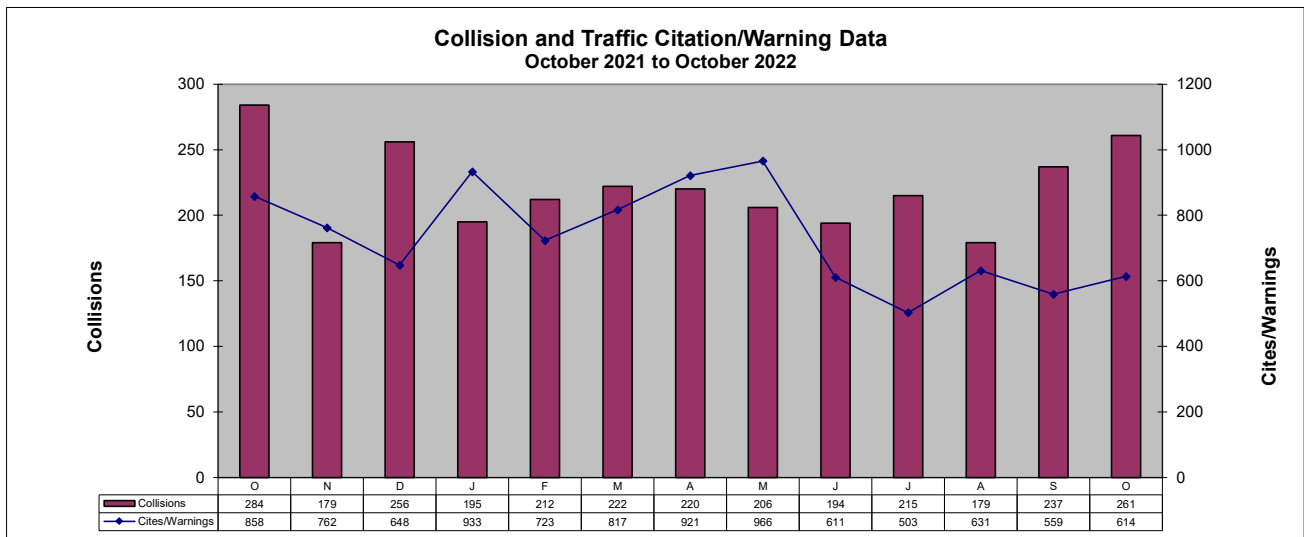
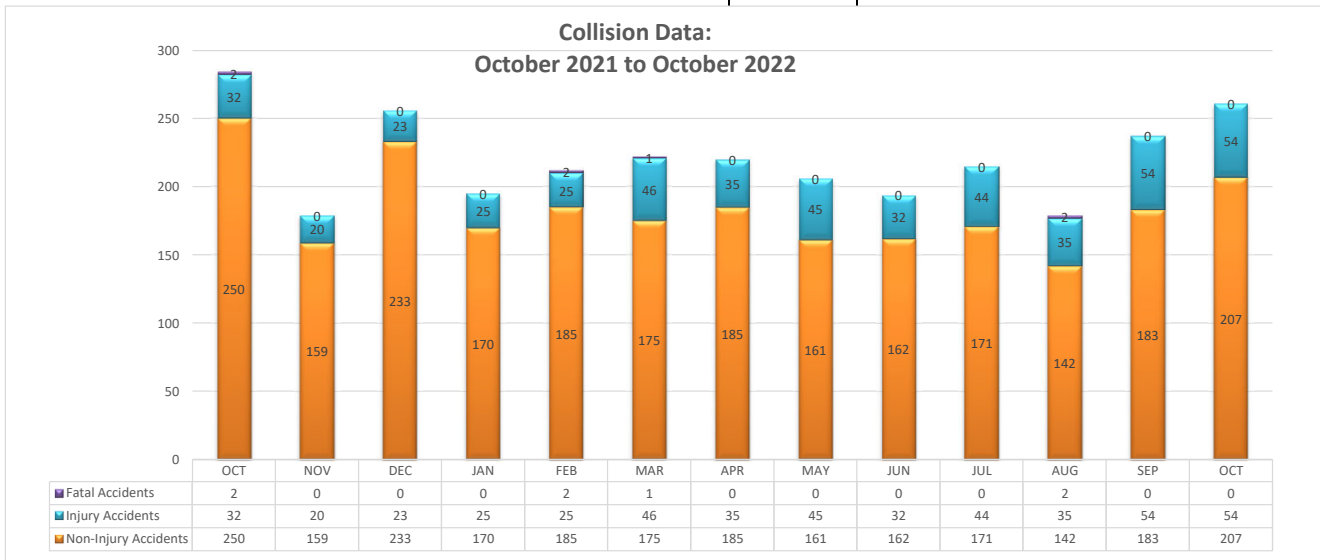
NOTE: In addition to the 41 DUI arrests, 17 are pending blood results.



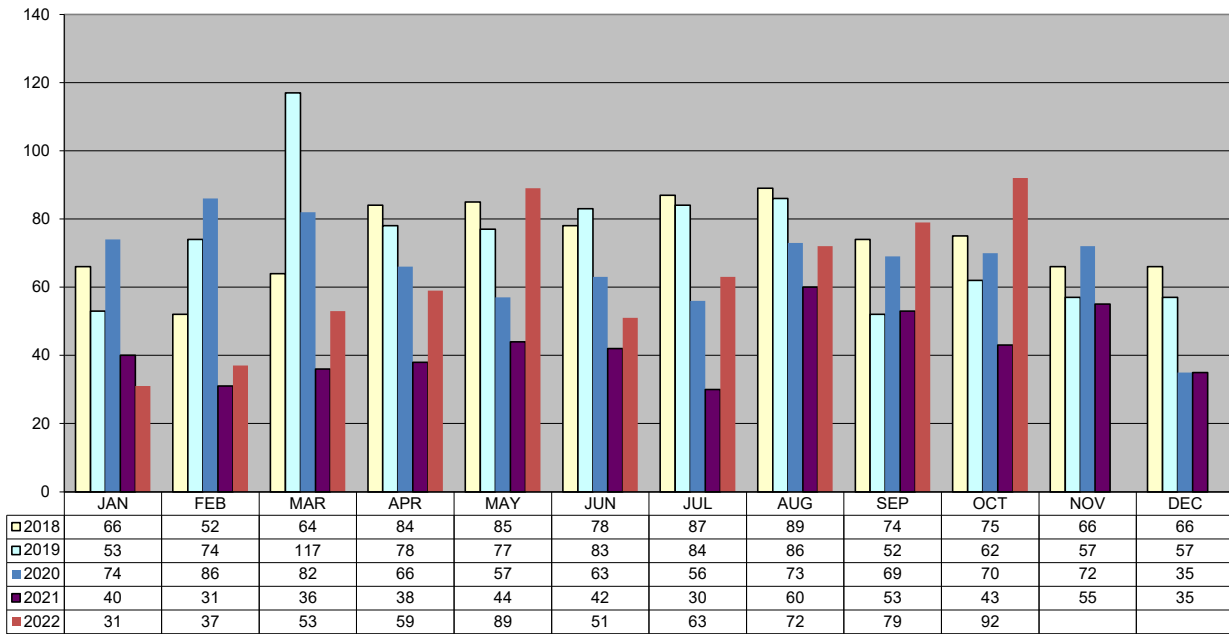
TRAFFIC DATA

October 2022

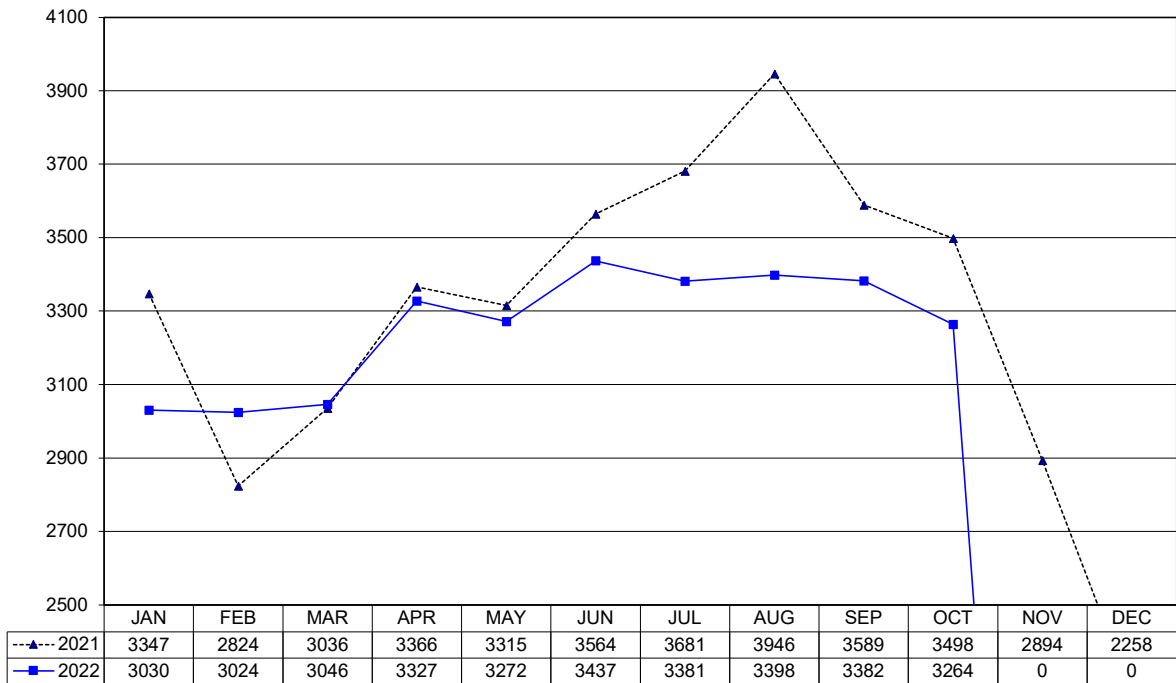
ACTIVITY TYPE	June	July	August	September	October	YTD 2022	YTD 2021	% Change
	Non-Injury Collisions	162	171	142	183	207	1,741	1,880
Injury Collisions	32	44	35	54	54	395	337	17%
Fatal Collisions	0	0	2	0	0	5	9	-44%
Private Property Collisions	52	60	55	49	64	578	639	-10%
DUI Related Collisions	3	10	8	4	10	66	77	-14%
DUI (Total)	54	46	42	40	41	420	495	-15%
DUI (Alcohol)	52	44	39	39	35	401	229	75%
DUI (Drugs)	2	2	3	1	6	19	8	138%
Traffic Citations	182	150	174	185	174	2,081	3,375	-38%
Warnings	429	353	457	374	440	4,851	6,265	-23%
Parking Citations	17	14	19	39	66	349	308	13%
All Traffic Stops	819	727	900	796	849	8,966	12,215	-27%
Traffic Stops-No Enfor	68	50	54	50	36	575	1,326	-57%
30-Day Impounds	16	8	6	9	5	103	157	-34%



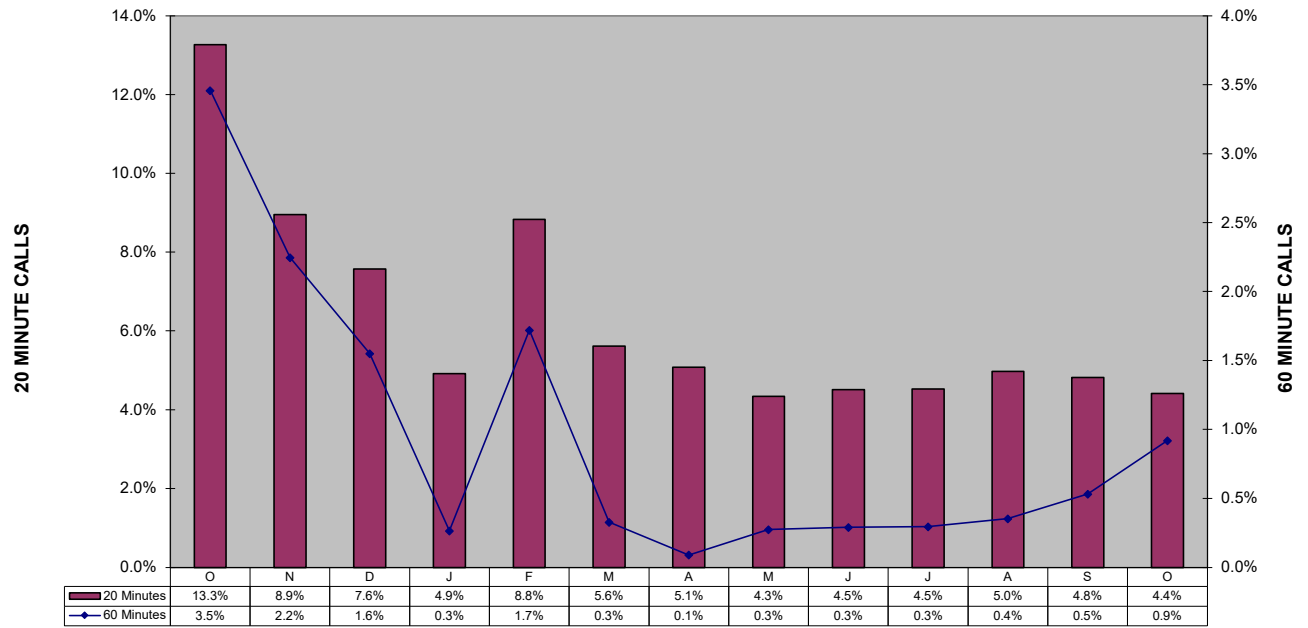
Shoplifting 5-Year Comparison



Police Calls for Service - 12 Month Trend October 2022

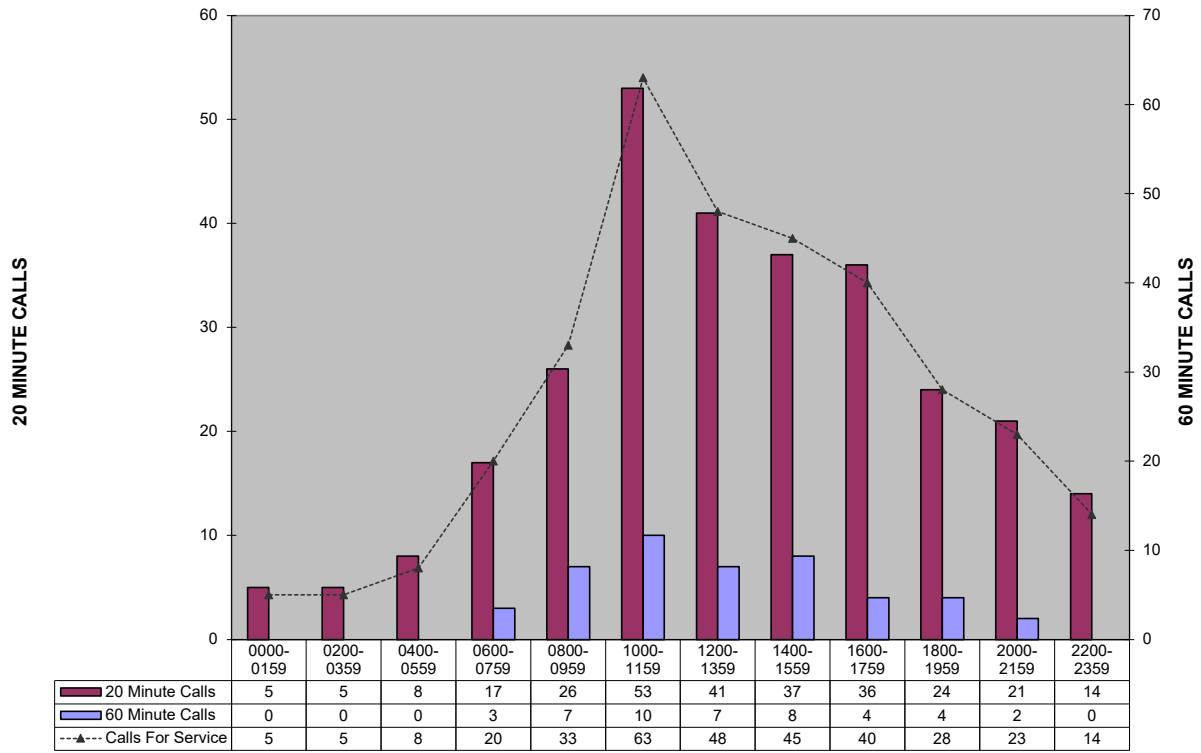


**Percent of Police Calls Held 20 and 60 Minutes
October 2021 to October 2022**

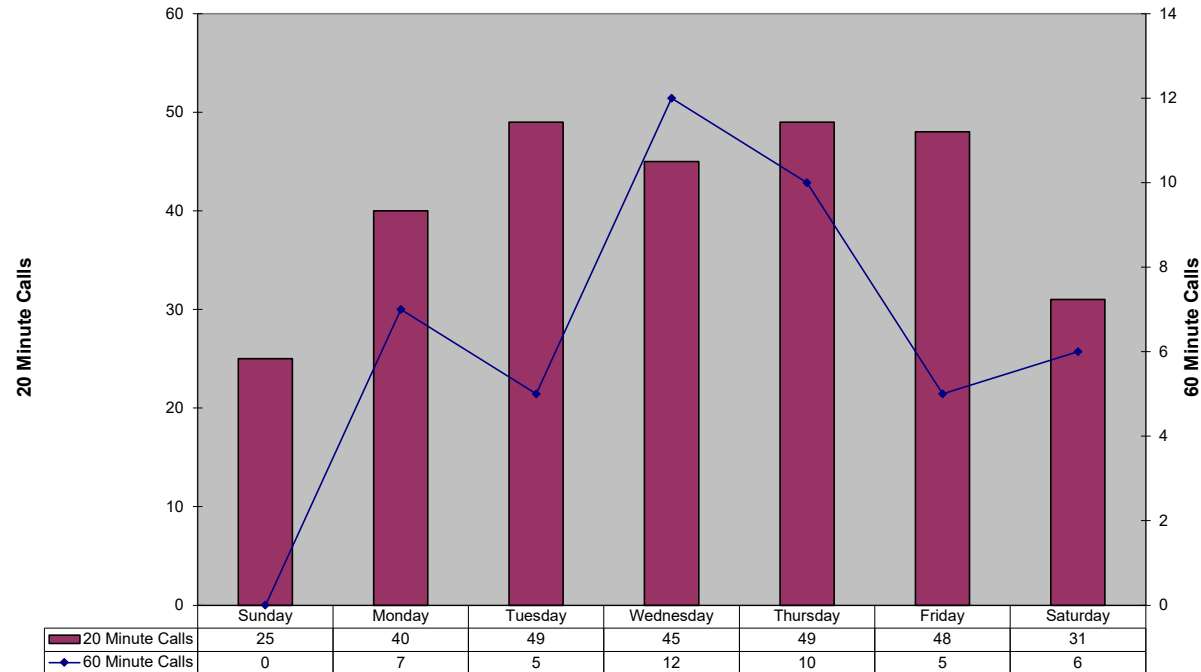


This section intentionally left blank.

20 and 60 Minute Calls Held by Time of Day (This custom report is being configured)

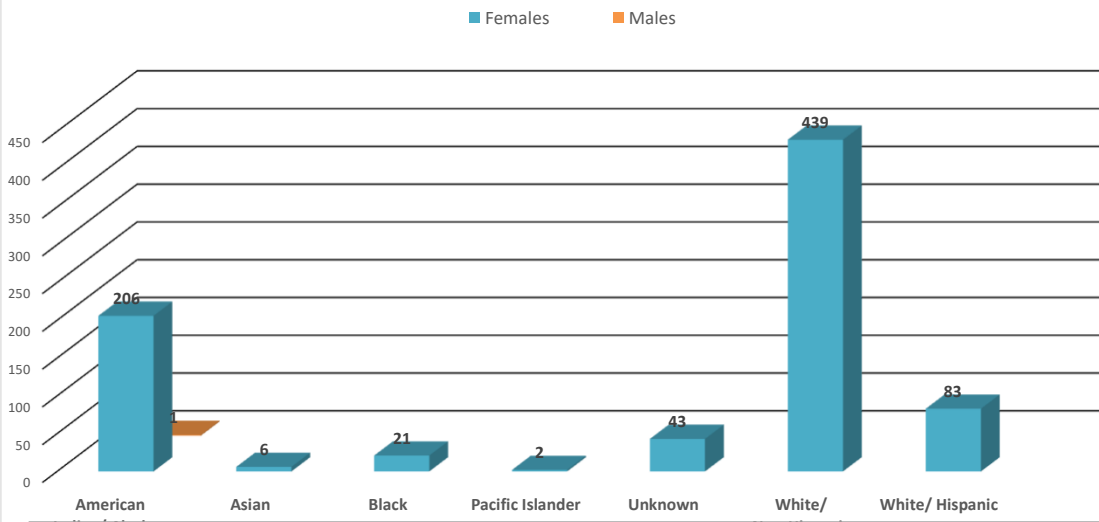


20 and 60 Minute Calls Holding by Day of Week (This custom report is being configured)



In an effort to be more transparent, we have started presenting arrest and victimization rates year to date. These statistics are currently being impacted by trends related to the Covid -19 pandemic. Flagstaff has seen less visitation and tourism, and a reduction in our college student population. This has positively manifested itself in reduced criminality and arrests in some areas. Our community is one of only a few that has provided additional housing options for homeless populations. This has drawn more homeless individuals to Flagstaff. Unfortunately, we continue to see Native American members of our homeless population over-represented in both arrest and victimization data. Many of these arrests are on those who are not City residents, and many of these arrests are of repeat offenders.

October 2022 Year To Date: Felony Incidents- Victims by Race



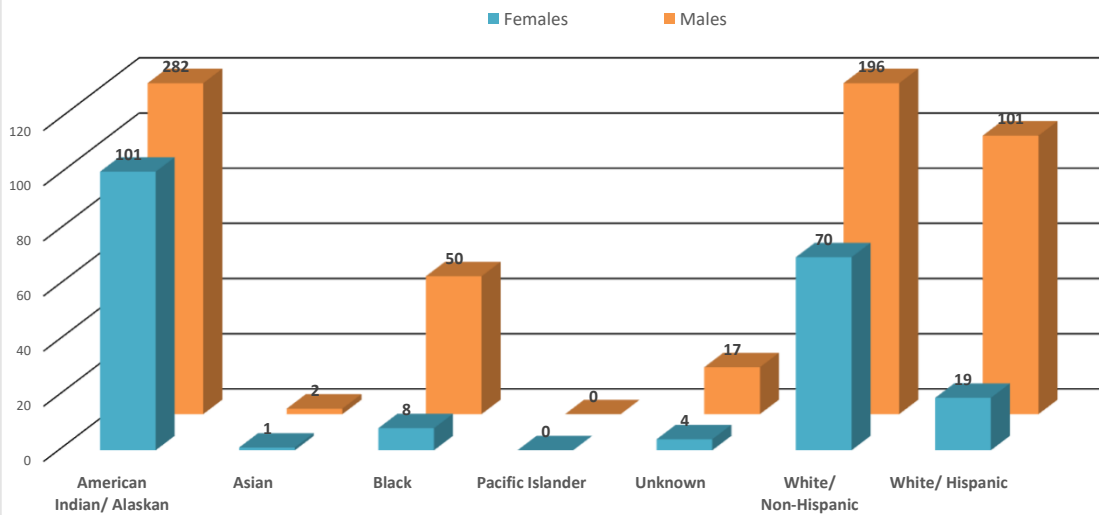
Indian/ Alaskan **Non-Hispanic**

*This data is representative of a single, victim by race/ethnicity, in a single incident only. There may be multiple victims of the same race/ethnicity within that incident, but that data is not captured or displayed above.

**If there are multiple victims within the same incident, that have a different race/ethnicity, those differering races/ethnicities are identified and displayed above.

***If the same individual has been the victim of different incidents, that data is captured and displayed above.

October 2022 Year To Date: Felony Arrests by Race

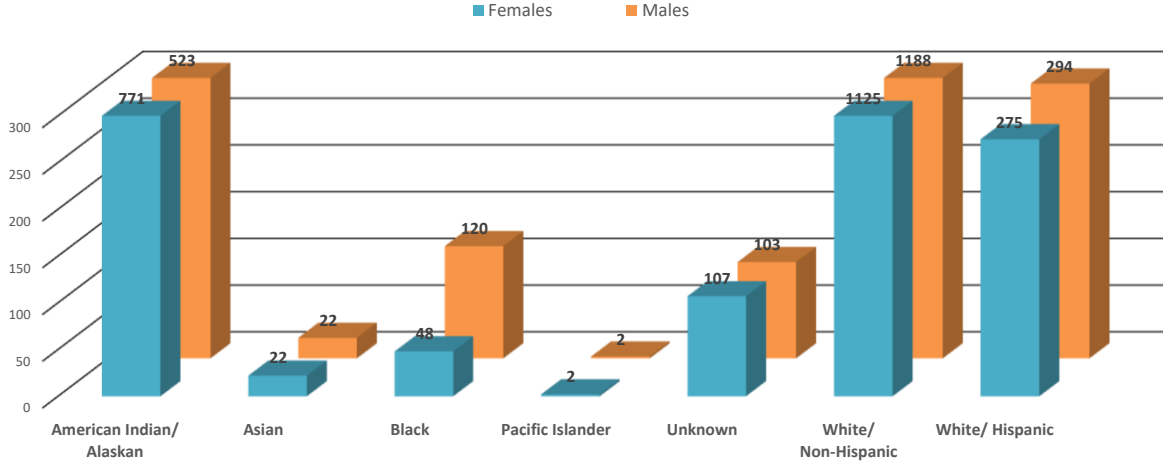


*This data is representative of a single, individual arrest by incident only; these numbers do not reflect the total number of charges from a single incident.

**There may be individuals who have been arrested for different incidents; if the same person is arrested for a different incident (generally different time/date/location), that information is captured and displayed on the above chart.

In an effort to be more transparent, we have started presenting arrest and victimization rates year to date. These statistics are currently being impacted by trends related to the Covid -19 pandemic. Flagstaff has seen less visitation and tourism, and a reduction in our college student population. This has positively manifested itself in reduced criminality and arrests in some areas. Our community is one of only a few that has provided additional housing options for homeless populations. This has drawn more homeless individuals to Flagstaff. Unfortunately, we continue to see Native American members of our homeless population over-represented in both arrest and victimization data. Many of these arrests are on those who are not City residents, and many of these arrests are of repeat offenders.

October 2022 Year To Date: Misdemeanor Incidents- Victims by Race

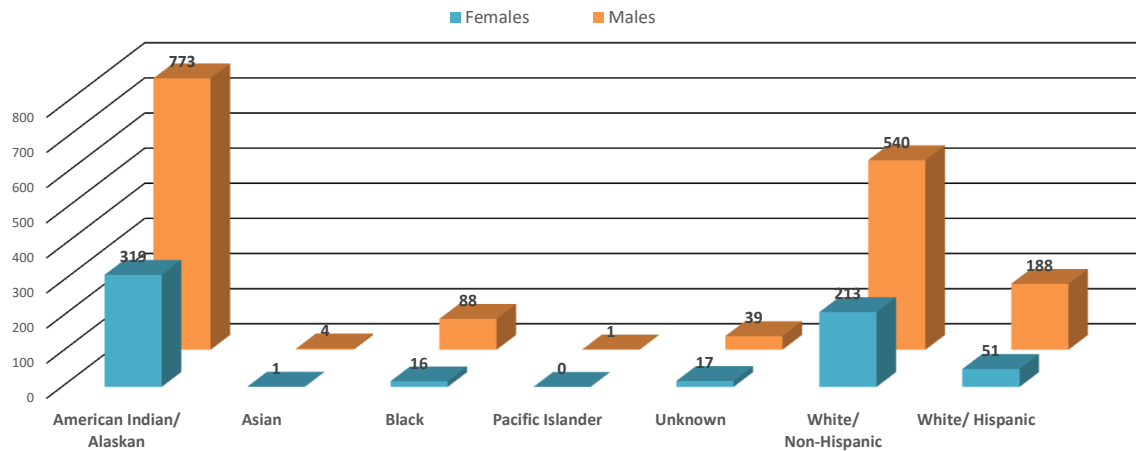


*This data is representative of a single, victim by race/ethnicity, in a single incident only. There may be multiple victims of the same race/ethnicity within that incident, but that data is not captured or displayed above.

**If there are multiple victims within the same incident, that have a different race/ethnicity, those differering races/ethnicities are identified and displayed above.

***If the same individual has been the victim of different incidents, that data is captured and displayed above.

October 2022 Year To Date: Misdemeanor Arrests by Race



*This data is representative of a single, individual arrest by incident only; these numbers do not reflect the total number of charges from a single incident.

**There may be individuals who have been arrested for different incidents; if the same person is arrested for a different incident (generally different time/date/location), that information is captured and displayed on the above chart.



FLAGSTAFF POLICE DEPARTMENT MONTHLY REPORT October 2022

	October	Y.T.D. 2022	Y.T.D. 2021	% CHANGE
CALLS FOR SERVICE (TOTAL)	6664	63214	65601	-3.6%
1. Police	3264	32561	34166	-4.7%
2. Sheriff	1244	14020	15321	-8.5%
3. City Fire	1359	13221	13245	-0.2%
4. Rural Fire	252	2821	2701	4.4%
5. Forest Service	9	93	133	-30.1%
6. US NPS	1	24	35	
REPORTS TAKEN (TOTAL)	1580	14830	14456	2.6%
1. Misdemeanor	643	6515	6376	2.2%
2. Felony	226	2179	2203	-1.1%
3. Incident	711	6136	5877	4.4%
Accident	261	2141	2226	-3.8%
Incident - no report	1684	19658	19862	-1.0%
Short Form Reports	1	109	217	-49.8%
Violent Crimes	30	255	183	39.3%
Property Crimes	207	1597	1399	14.2%
ARRESTS (TOTAL)	352	3470	3739	-7.2%
1. Misdemeanor arrests	261	2570	2857	-10.0%
2. Felony Arrests	91	855	882	-3.1%
In-Custody Bookings	265	2330	2887	-19.3%
Juvenile Arrests	3	47	32	46.9%
Juvenile Referrals	14	106	86	23.3%
Warrant Arrests	34	353	283	24.7%
TRAFFIC ACCIDENTS (TOTAL)				
Includes Private Property	261	2141	2226	-3.8%
1. Non-Injury Accidents	207	1741	1880	-7.4%
2. Injury Accidents	54	395	337	17.2%
3. Fatal Accidents	0	5	9	200.0%
Private Property Accidents	64	578	639	-9.5%
DUI Related Accidents	10	67	77	-13.0%
CITATIONS ISSUED (TOTAL)	333	3763	5330	-29.4%
1. Traffic	174	2081	3375	-38.3%
D.U.I.'s	41	420	495	-15.2%
2. Criminal (Non-Traffic)	159	1682	1955	-14.0%
WARNING & REPAIR ORDERS	440	4851	6265	-22.6%
FIELD I.D. CARDS	295	3954	6934	-43.0%
PI CONTACTS	44	934	2073	-54.9%
DETECTIVES				
1. Cases Assigned	282	2736	2606	5.0%
2. Cases Cleared	125	1355	1414	-4.2%
3. Clearance Rate	44%	49.5%	54.3%	-4.7%
DOMESTIC VIOLENCE				
1. Incidents Reported	135	1611	1464	10.0%
a. Misdemeanor	112	1347	1248	7.9%
b. Felony	23	264	216	22.2%
2. Arrests	52	557	527	5.7%

Shaded areas indicate YTD adjustments



**FLAGSTAFF POLICE DEPARTMENT MONTHLY REPORT
October 2022**

	October	Y.T.D. 2022	Y.T.D. 2021	% CHANGE
COMMUNITY RELATIONS & TRAINING				
1. Public Speaking Presentations Includes Media Releases	90	895	758	18.1%
2. Training - Total Hours	4104	26744.5	14536.5	84.0%
Academy	2688	11952	6760	76.8%
Field Training	248	7760	3979.5	95.0%
Advance Officer Training	1168	7032.5	5484	28.2%
3. Volunteer Hours	156.75	814.5	1276.5	-36.2%
4. Community Support Mtg.	20	200	601	-66.7%
ANIMAL CONTROL (PATROL)				
1. Impounds	22	294	265	10.9%
2. Citations	1	1	13	-92.3%
PATROL HOURS IN FIELD	8,650	90426.25	99156	-8.8%

PERSONNEL	Field Operations	Support Services		
1. Authorized Strength	119	57		
2. Actual Strength	110	45		
3. Resignations or Terminations	2	2		
4. New Hires	0	1		

This section intentionally left blank.