

CompStat Report

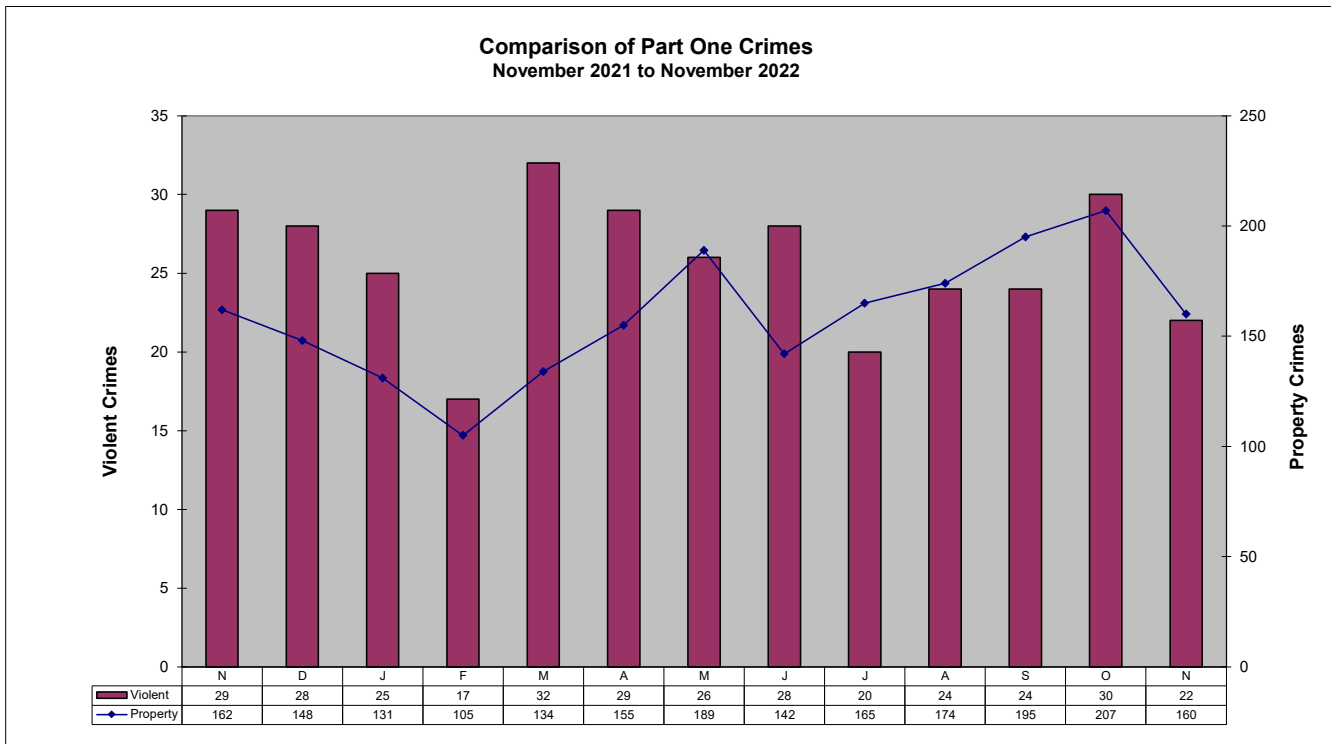
FLAGSTAFF POLICE DEPARTMENT
November 2022



ad honorem

Part One Crime Summary November 2022

CRIME TYPE	July	August	September	October	November	YTD		% Change	% CLEARED		
						2022	2021		2022	2021	
HOMICIDE*	0	0	1	0	0	4	2	100%	4	100%	100%
SEX OFFENSES	10	8	7	10	6	99	66	50%	40	40%	38%
SEX ASSAULTS	2	3	5	6	3	44	36	22%	22	50%	43%
ROBBERY*	2	2	6	5	1	41	35	17%	16	39%	10%
AGG ASSAULT*	8	14	10	15	15	133	109	22%	85	64%	130%
BURGLARY	10	7	9	10	10	90	90	0%	32	36%	19%
LARC THEFT	151	164	186	188	149	1598	1401	14%	534	33%	27%
GTA	4	3	0	8	1	58	70	-17%	24	41%	27%
VIOLENT*	20	24	24	30	22	277	212	31%	145	52%	46%
PROPERTY	165	174	195	207	160	1757	1561	13%	572	33%	26%
GRAND TOTAL	185	198	219	237	182	2034	1773	15%	717	35%	28%
ARSON	0	0	0	1	0	11	3	267%	6	55%	33%



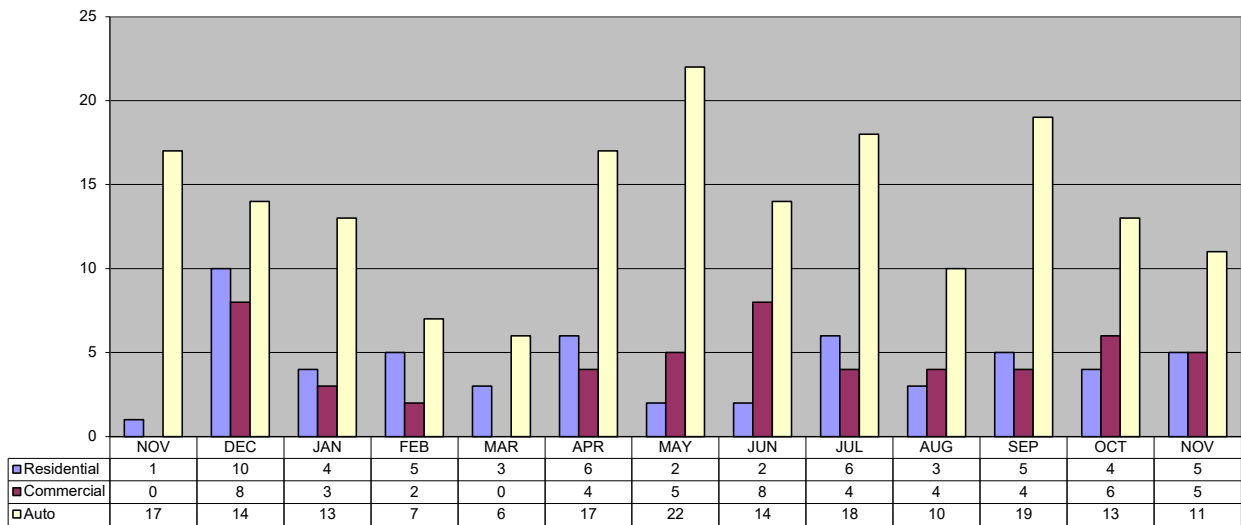
Patrol Activity / Goals

November 2022

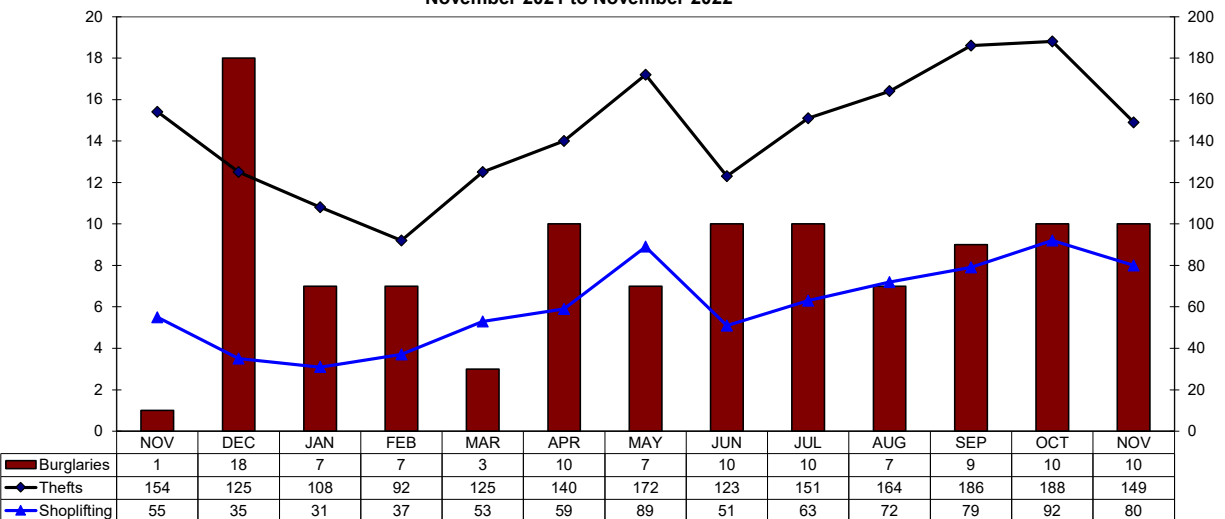
ACTIVITY TYPE	July	August	September	October	November	YTD 2022	YTD 2021	% Change
	Robberies	2	2	6	5			
Total Burglaries	10	7	9	10	10	90	90	0%
Res Burglaries	6	3	5	4	5	45	46	-2%
Comm Burglaries	4	4	4	6	5	45	44	2%
Auto Burglaries	18	10	19	13	11	150	151	-1%
Shoplifting	63	72	79	92	80	706	472	50%
Citations/Warnings	503	631	559	614	802	8,080	10,402	-22%
DUI Arrests	46	42	40	41	40	460	541	-15%
Collisions	215	179	237	261	208	2,349	2,405	-2%

NOTE: In addition to the 40 DUI arrests, 6 are pending blood results.

Thirteen Month Comparison of all Burglaries
November 2021 to November 2022



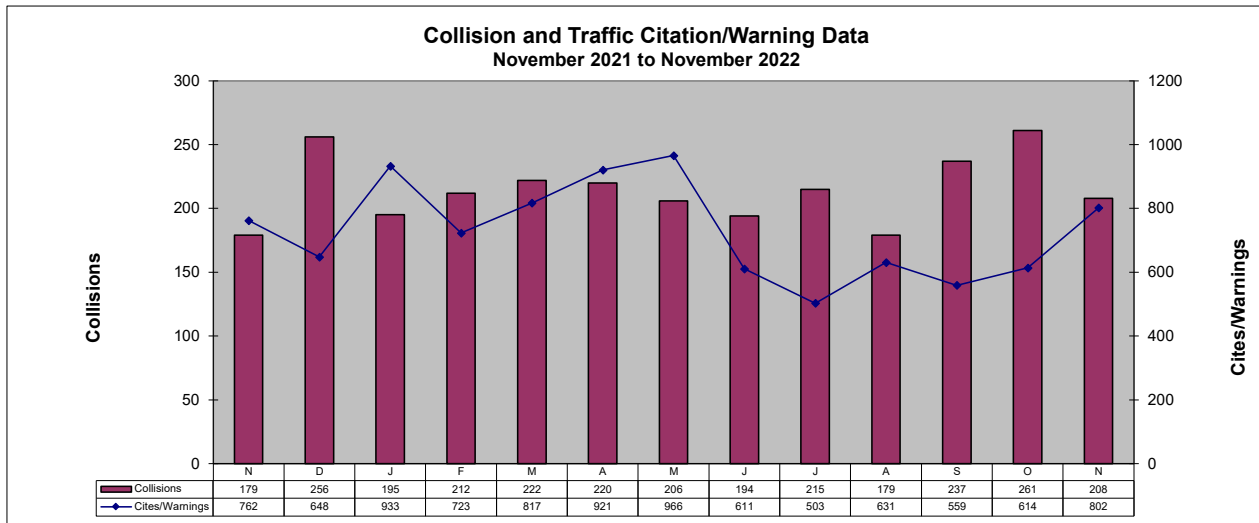
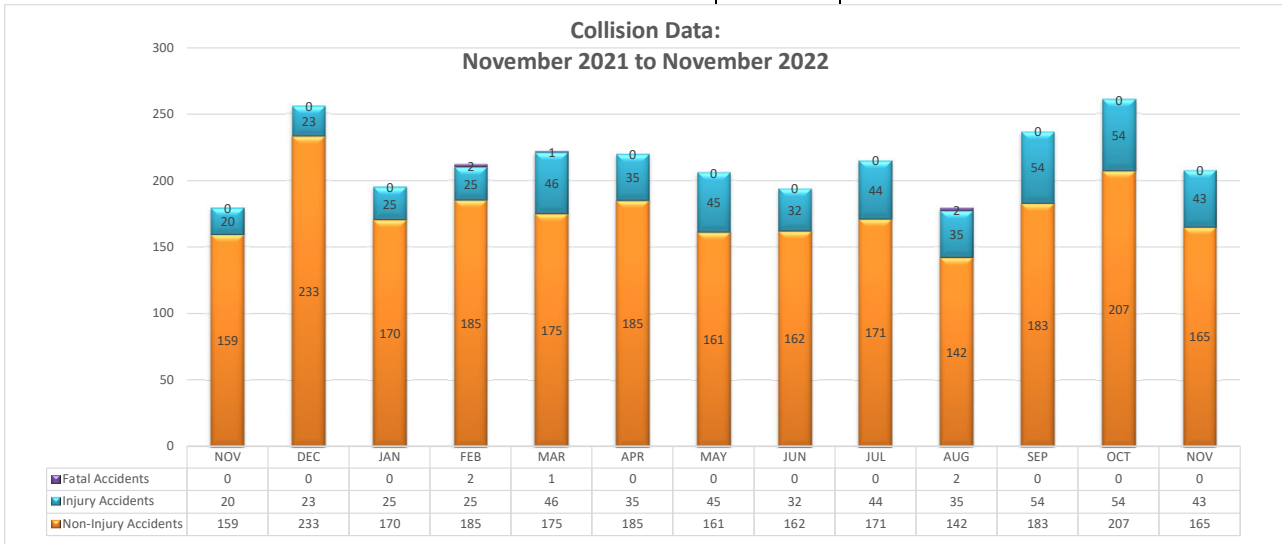
Thirteen Month Comparison of Thefts and Burglaries
November 2021 to November 2022



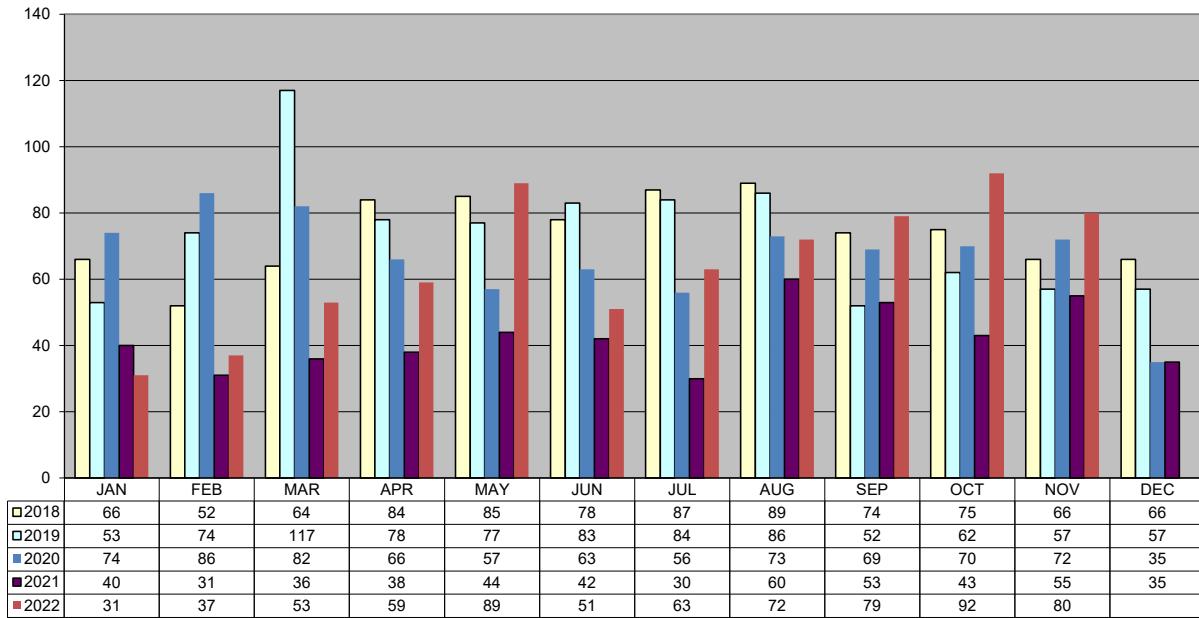
TRAFFIC DATA

November 2022

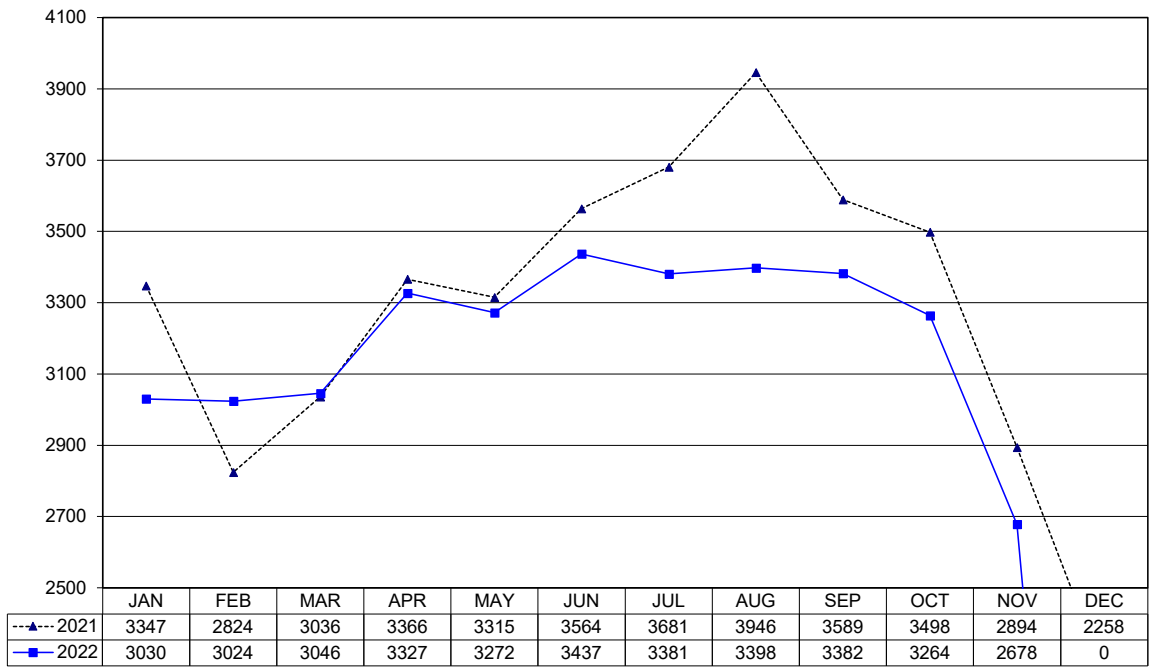
ACTIVITY TYPE	July	August	September	October	November	YTD	YTD	%
	2022	2022	2022	2022	2022	2022	2021	Change
Non-Injury Collisions	171	142	183	207	165	1,906	2,039	-7%
Injury Collisions	44	35	54	54	43	438	357	23%
Fatal Collisions	0	2	0	0	0	5	9	-44%
Private Property Collisions	60	55	49	64	36	614	689	-11%
DUI Related Collisions	10	8	4	10	9	75	85	-12%
DUI (Total)	46	42	40	41	40	460	541	-15%
DUI (Alcohol)	44	39	39	35	36	437	234	87%
DUI (Drugs)	2	3	1	6	4	23	7	229%
Traffic Citations	150	174	185	174	188	2,269	3,615	-37%
Warnings	353	457	374	440	614	5,465	6,787	-19%
Parking Citations	14	19	39	66	191	540	323	67%
All Traffic Stops	727	900	796	849	1,020	9,986	13,303	-25%
Traffic Stops-No Enfor	50	54	50	36	44	619	1,449	-57%
30-Day Impounds	8	6	9	5	5	108	173	-38%



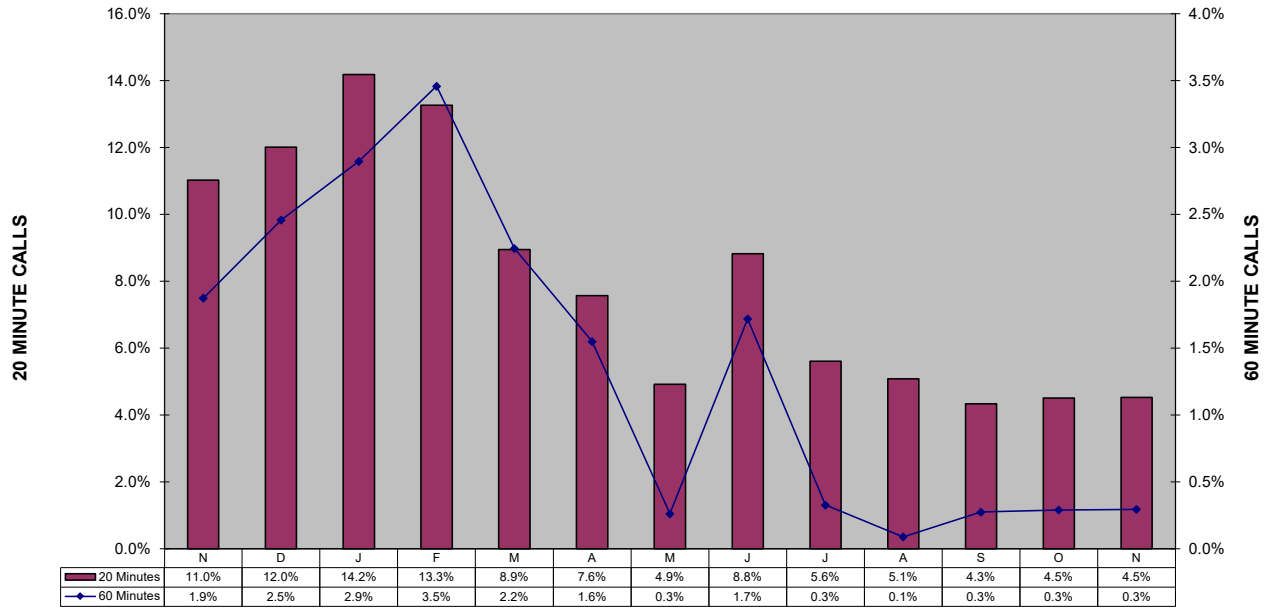
Shoplifting 5-Year Comparison



Police Calls for Service - 12 Month Trend November 2022

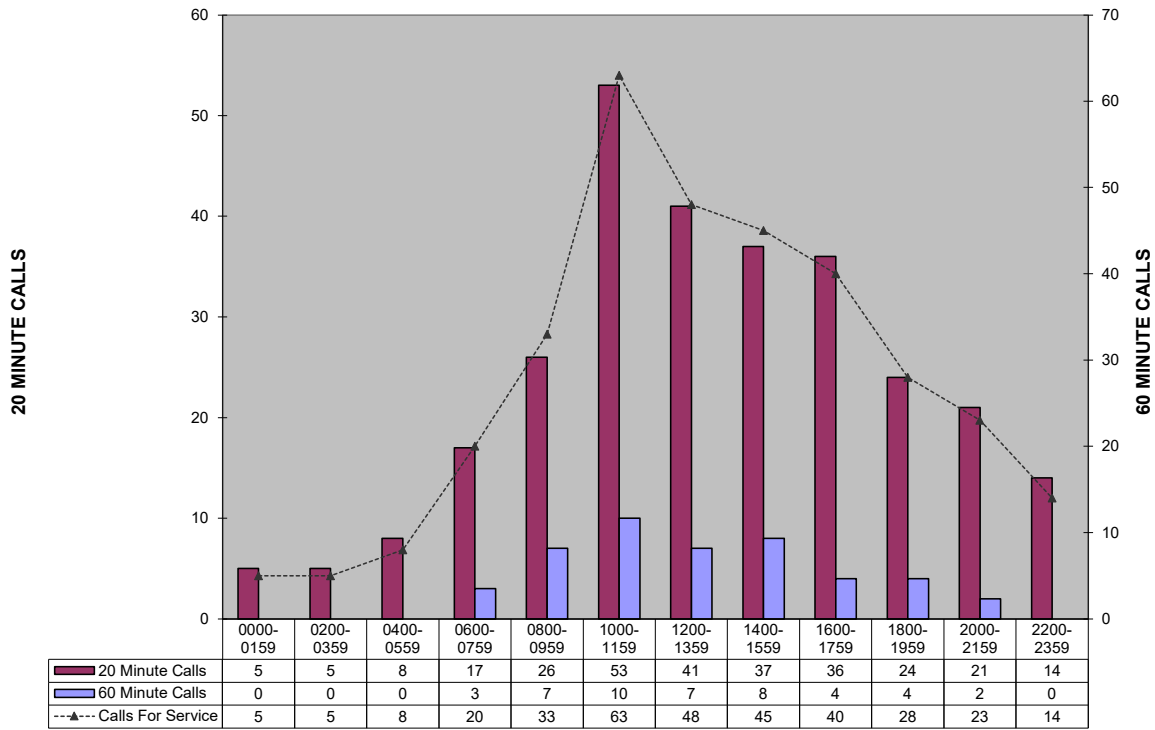


**Percent of Police Calls Held 20 and 60 Minutes
November 2021 to November 2022**

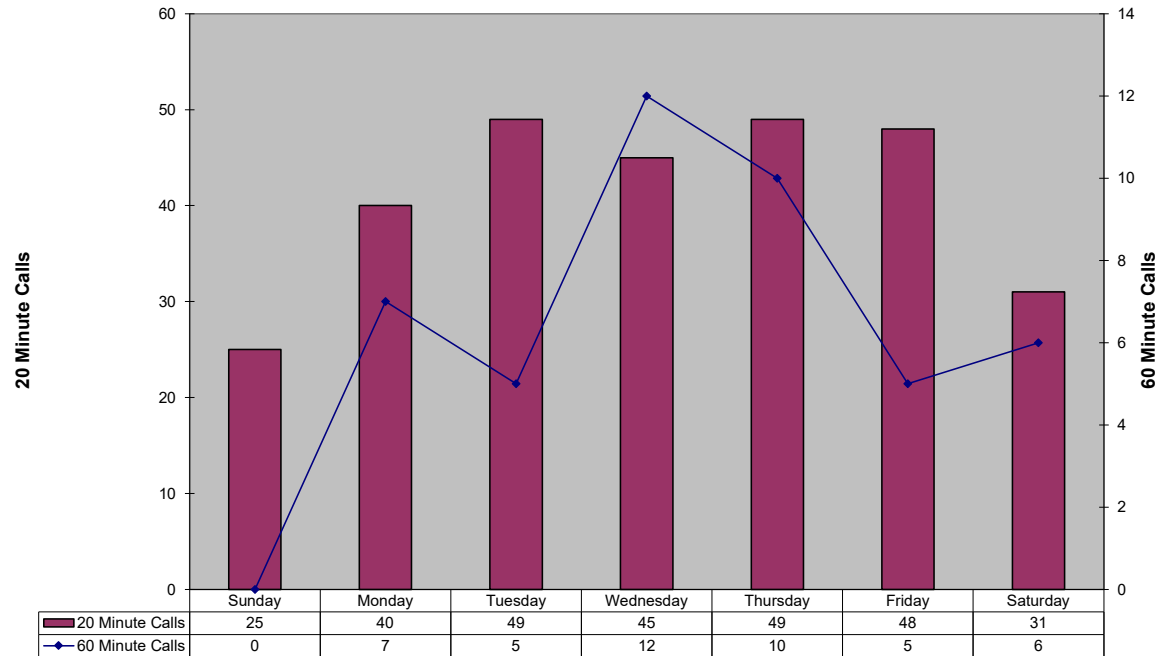


This section intentionally left blank.

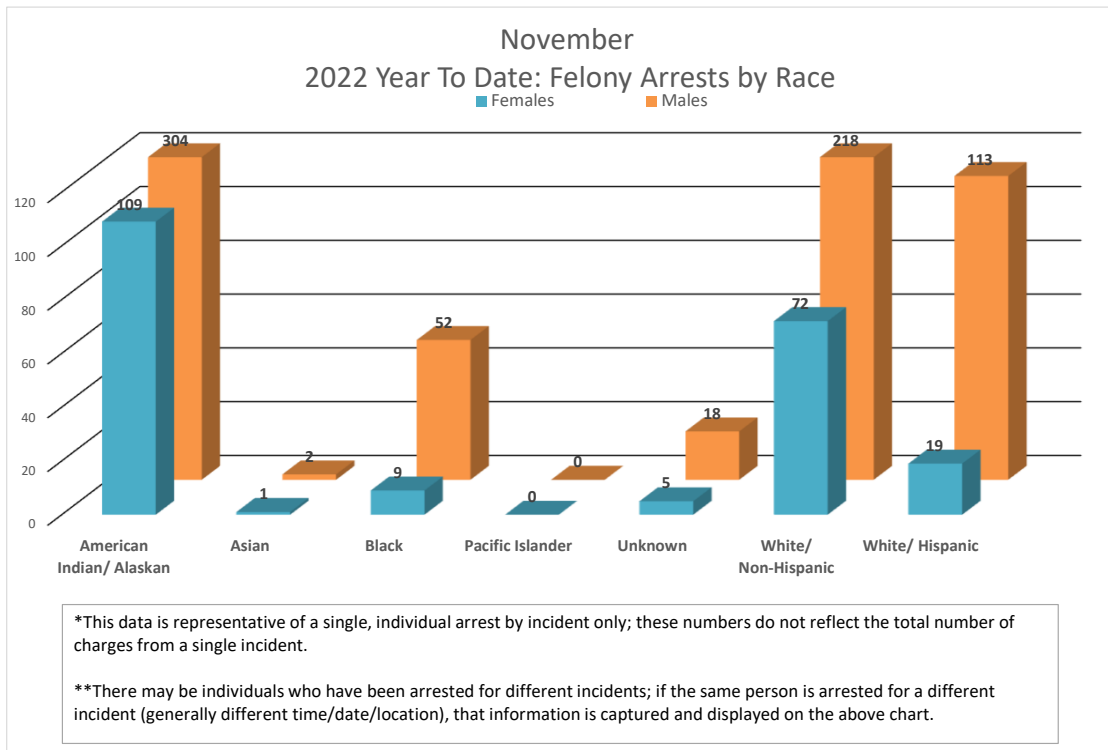
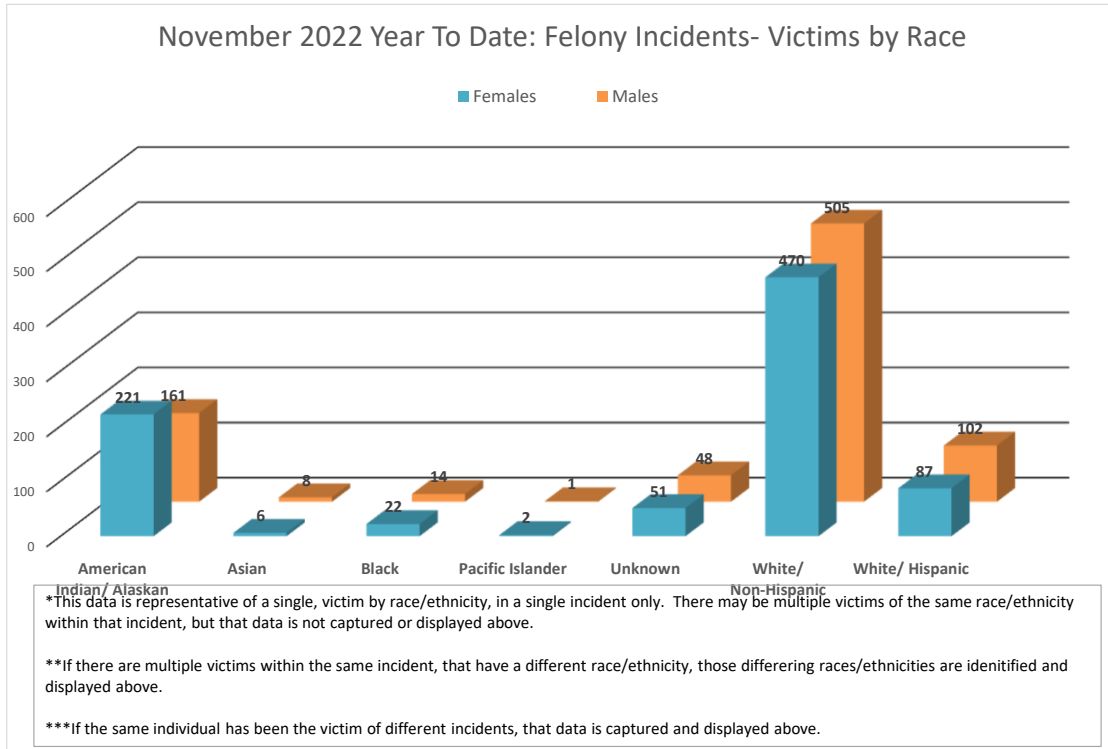
20 and 60 Minute Calls Held by Time of Day (This custom report is being configured)



20 and 60 Minute Calls Holding by Day of Week (This custom report is being configured)

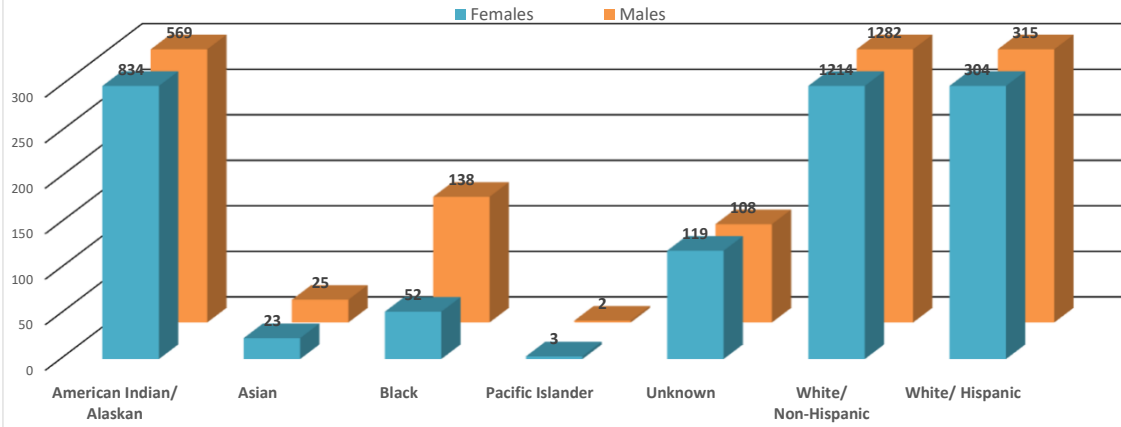


In an effort to be more transparent, we have started presenting arrest and victimization rates year to date. These statistics are currently being impacted by trends related to the Covid -19 pandemic. Flagstaff has seen less visitation and tourism, and a reduction in our college student population. This has positively manifested itself in reduced criminality and arrests in some areas. Our community is one of only a few that has provided additional housing options for homeless populations. This has drawn more homeless individuals to Flagstaff. Unfortunately, we continue to see Native American members of our homeless population over-represented in both arrest and victimization data. Many of these arrests are on those who are not City residents, and many of these arrests are of repeat offenders.



In an effort to be more transparent, we have started presenting arrest and victimization rates year to date. These statistics are currently being impacted by trends related to the Covid -19 pandemic. Flagstaff has seen less visitation and tourism, and a reduction in our college student population. This has positively manifested itself in reduced criminality and arrests in some areas. Our community is one of only a few that has provided additional housing options for homeless populations. This has drawn more homeless individuals to Flagstaff. Unfortunately, we continue to see Native American members of our homeless population over-represented in both arrest and victimization data. Many of these arrests are on those who are not City residents, and many of these arrests are of repeat offenders.

November 2022 Year To Date: Misdemeanor Incidents- Victims by Race

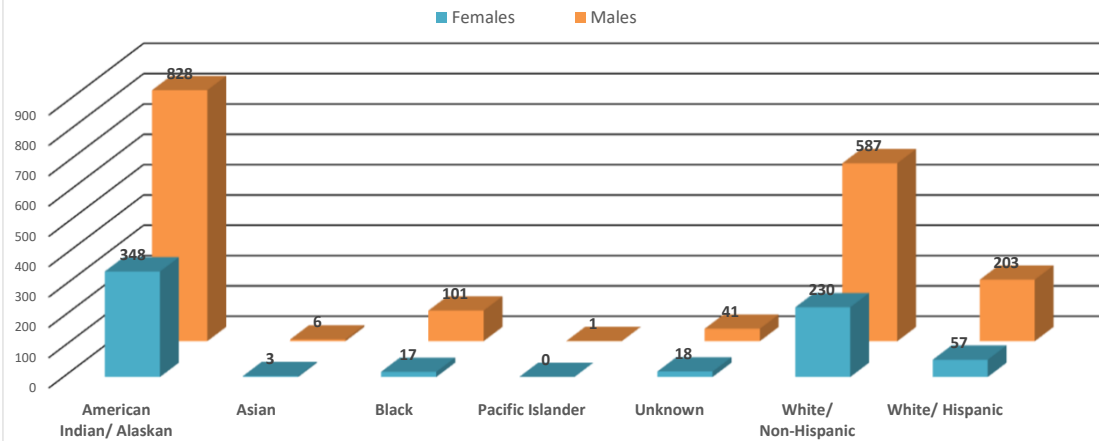


*This data is representative of a single, victim by race/ethnicity, in a single incident only. There may be multiple victims of the same race/ethnicity within that incident, but that data is not captured or displayed above.

**If there are multiple victims within the same incident, that have a different race/ethnicity, those differering races/ethnicities are identified and displayed above.

***If the same individual has been the victim of different incidents, that data is captured and displayed above.

November 2022 Year To Date: Misdemeanor Arrests by Race



*This data is representative of a single, individual arrest by incident only; these numbers do not reflect the total number of charges from a single incident.

**There may be individuals who have been arrested for different incidents; if the same person is arrested for a different incident (generally different time/date/location), that information is captured and displayed on the above chart.



**FLAGSTAFF POLICE DEPARTMENT MONTHLY REPORT
November 2022**

	November	Y.T.D. 2022	Y.T.D. 2021	% CHANGE
CALLS FOR SERVICE (TOTAL)	5231	68445	71153	-3.8%
1. Police	2678	35239	37060	-4.9%
2. Sheriff	1061	15081	16582	-9.1%
3. City Fire	1222	14443	14437	0.0%
4. Rural Fire	267	3088	2895	6.7%
5. Forest Service	1	94	142	-33.8%
6. US NPS	2	26	37	
REPORTS TAKEN (TOTAL)	1230	16060	15827	1.5%
1. Misdemeanor	561	7076	6993	1.2%
2. Felony	148	2327	2423	-4.0%
3. Incident	521	6657	6411	3.8%
Accident	208	2349	2405	-2.3%
Incident - no report	1448	21106	21385	-1.3%
Short Form Reports	1	110	224	-50.9%
Violent Crimes	22	277	212	30.7%
Property Crimes	160	1757	1561	12.6%
ARRESTS (TOTAL)	287	3757	4127	-9.0%
1. Misdemeanor arrests	216	2786	3142	-11.3%
2. Felony Arrests	71	926	985	-6.0%
In-Custody Bookings	220	2550	3187	-20.0%
Juvenile Arrests	3	50	36	38.9%
Juvenile Referrals	11	117	101	15.8%
Warrant Arrests	26	379	324	17.0%
TRAFFIC ACCIDENTS (TOTAL)				
Includes Private Property	208	2349	2405	-2.3%
1. Non-Injury Accidents	165	1906	2039	-6.5%
2. Injury Accidents	43	438	357	22.7%
3. Fatal Accidents	0	5	9	200.0%
Private Property Accidents	36	614	689	-10.9%
DUI Related Accidents	9	76	85	-10.6%
CITATIONS ISSUED (TOTAL)	318	4081	5738	-28.9%
1. Traffic	188	2269	3615	-37.2%
D.U.I.'s	40	460	541	-15.0%
2. Criminal (Non-Traffic)	130	1812	2123	-14.6%
WARNING & REPAIR ORDERS	614	5465	6787	-19.5%
FIELD I.D. CARDS	325	4279	7351	-41.8%
PI CONTACTS	34	968	2145	-54.9%
DETECTIVES				
1. Cases Assigned	187	2923	2888	1.2%
2. Cases Cleared	90	1445	1545	-6.5%
3. Clearance Rate	48%	49.4%	53.5%	-4.1%
DOMESTIC VIOLENCE				
1. Incidents Reported	134	1745	1595	9.4%
a. Misdemeanor	119	1466	1355	8.2%
b. Felony	15	279	240	16.3%
2. Arrests	50	607	583	4.1%

Shaded areas indicate YTD adjustments



**FLAGSTAFF POLICE DEPARTMENT MONTHLY REPORT
November 2022**

	November	Y.T.D. 2022	Y.T.D. 2021	% CHANGE
COMMUNITY RELATIONS & TRAINING				
1. Public Speaking Presentations Includes Media Releases	12	907	813	11.6%
2. Training - Total Hours	3116.75	29861.25	15348.5	94.6%
Academy	2720	14672	8040	82.5%
Field Training	40	7800	3979.5	96.0%
Advance Officer Training	356.75	7389.25	6187	19.4%
3. Volunteer Hours	166.75	981.25	1383.25	-29.1%
4. Community Support Mtg.	20	220	673	-67.3%
ANIMAL CONTROL (PATROL)				
1. Impounds	21	315	289	9.0%
2. Citations	0	1	13	-92.3%
PATROL HOURS IN FIELD	7,220	98252.25	107425	-8.5%

PERSONNEL	Field Operations	Support Services		
1. Authorized Strength	119	57		
2. Actual Strength	108	44		
3. Resignations or Terminations	4	2		
4. New Hires	2	1		

This section intentionally left blank.