

CompStat Report

FLAGSTAFF POLICE DEPARTMENT
December 2022

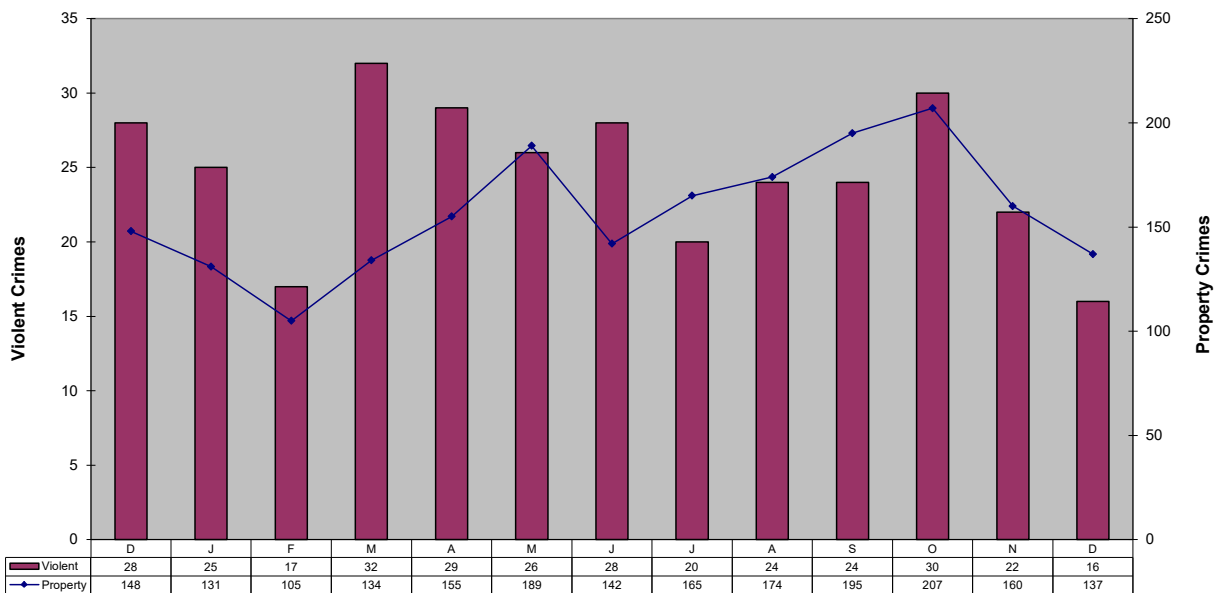


ad honorem

Part One Crime Summary December 2022

CRIME TYPE	August	September	October	November	December	YTD		%	CLEARED	% CLEARED	
						2022	2021	Change	2022	2022	2021
HOMICIDE*	0	1	0	0	0	4	2	100%	4	100%	100%
SEX OFFENSES	8	7	10	6	4	103	73	41%	43	40%	38%
SEX ASSAULTS	3	5	6	3	1	45	39	15%	24	50%	43%
ROBBERY*	2	6	5	1	2	43	39	10%	17	39%	10%
AGG ASSAULT*	14	10	15	15	10	143	126	13%	93	64%	130%
BURGLARY	7	9	10	10	4	94	108	-13%	33	36%	19%
LARC THEFT	164	186	188	149	124	1722	1526	13%	576	33%	27%
GTA	3	0	8	1	9	67	75	-11%	28	41%	27%
VIOLENT*	24	24	30	22	16	293	240	22%	157	52%	46%
PROPERTY	174	195	207	160	137	1894	1709	11%	615	33%	26%
GRAND TOTAL	198	219	237	182	153	2187	1949	12%	772	35%	28%
ARSON	0	0	1	0	0	11	3	267%	6	55%	33%

Comparison of Part One Crimes
December 2021 to December 2022

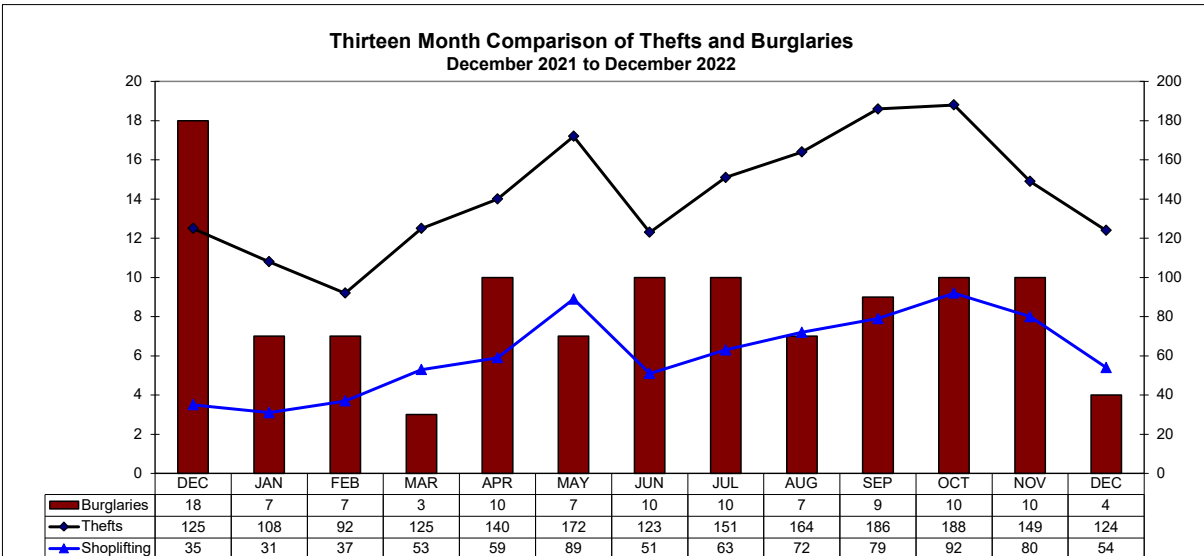
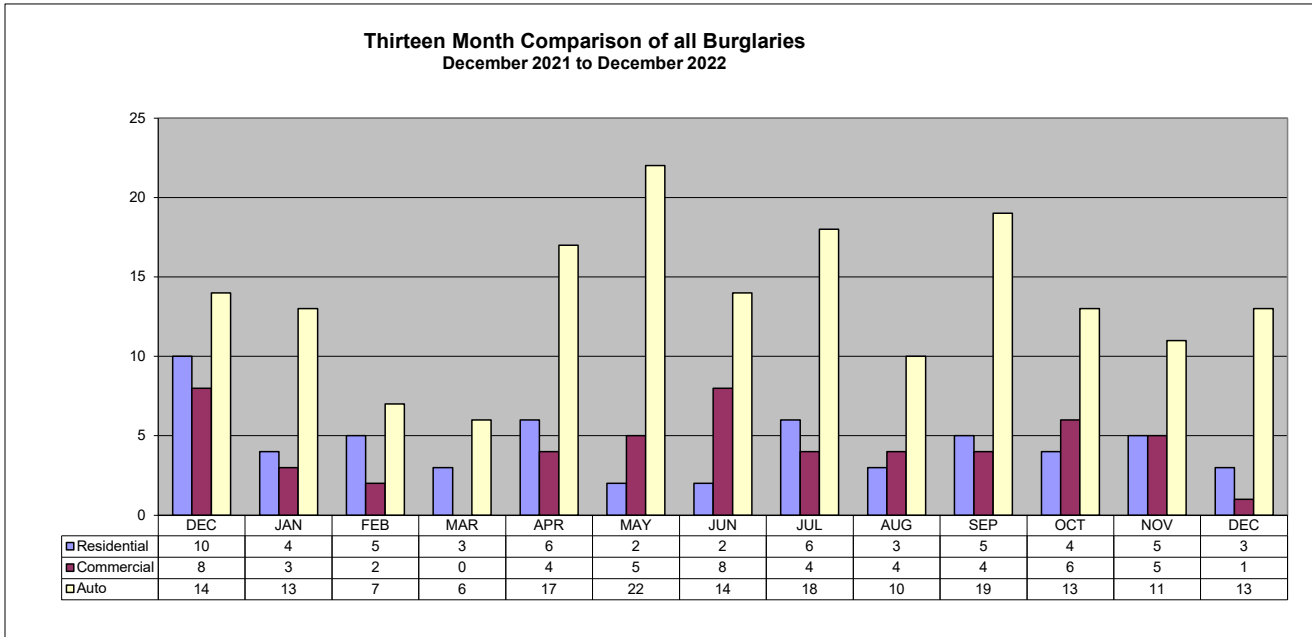


Patrol Activity / Goals

December 2022

ACTIVITY TYPE	August	September	October	November	December	YTD 2022	YTD 2021	% Change
Robberies	2	6	5	1	2	43	39	10%
Total Burglaries	7	9	10	10	4	94	108	-13%
Res Burglaries	3	5	4	5	3	48	56	-14%
Comm Burglaries	4	4	6	5	1	46	52	-12%
Auto Burglaries	10	19	13	11	13	163	165	-1%
Shoplifting	72	79	92	80	54	760	507	50%
Citations/Warnings	631	559	614	802	734	8,814	11,050	-20%
DUI Arrests	48	37	44	42	33	513	639	-20%
Collisions	179	237	261	208	212	2,561	2,661	-4%

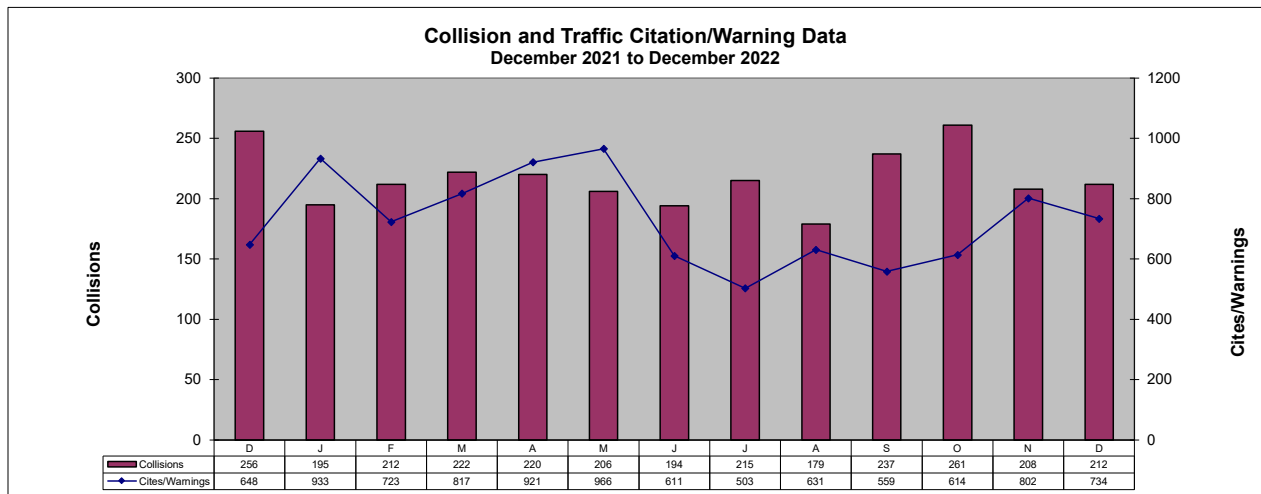
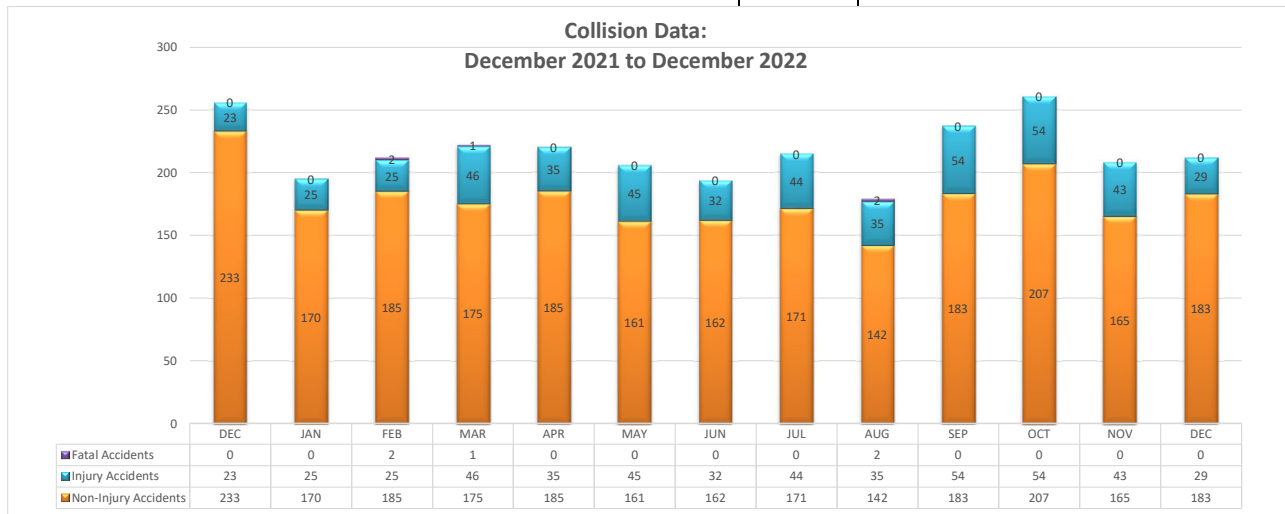
NOTE: In addition to the 33 DUI arrests, 5 are pending blood results.



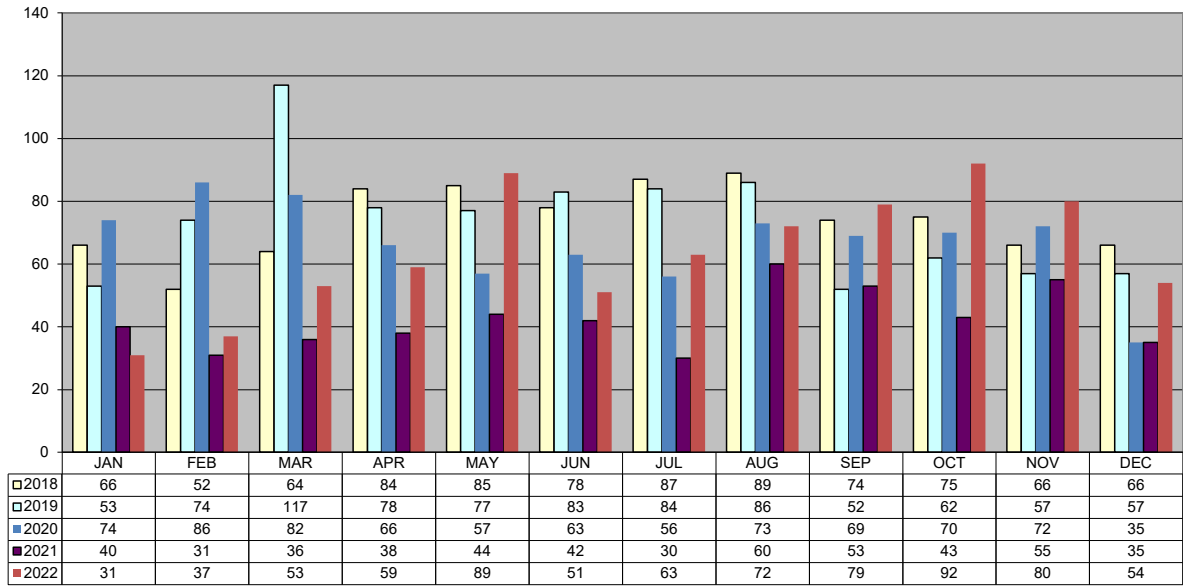
TRAFFIC DATA

December 2022

ACTIVITY TYPE	August	September	October	November	December	YTD 2022	YTD 2021	% Change
Non-Injury Collisions	142	183	207	165	183	2,089	2,272	-8%
Injury Collisions	35	54	54	43	29	467	380	23%
Fatal Collisions	2	0	0	0	0	5	9	-44%
Private Property Collisions	55	49	64	36	50	664	749	-11%
DUI Related Collisions	8	4	10	9	9	84	91	-8%
DUI (Total)	48	37	44	42	33	513	639	-20%
DUI (Alcohol)	45	35	43	37	28	464	563	-18%
DUI (Drugs)	3	2	1	5	5	49	76	-36%
Traffic Citations	174	185	174	188	169	2,438	3,799	-36%
Warnings	457	374	440	614	565	6,030	7,251	-17%
Parking Citations	19	39	66	191	36	576	384	50%
All Traffic Stops	900	796	849	1,020	937	10,923	14,265	-23%
Traffic Stops-No Enfor	54	50	36	44	23	642	1,550	-59%
30-Day Impounds	6	9	5	5	6	114	181	-37%



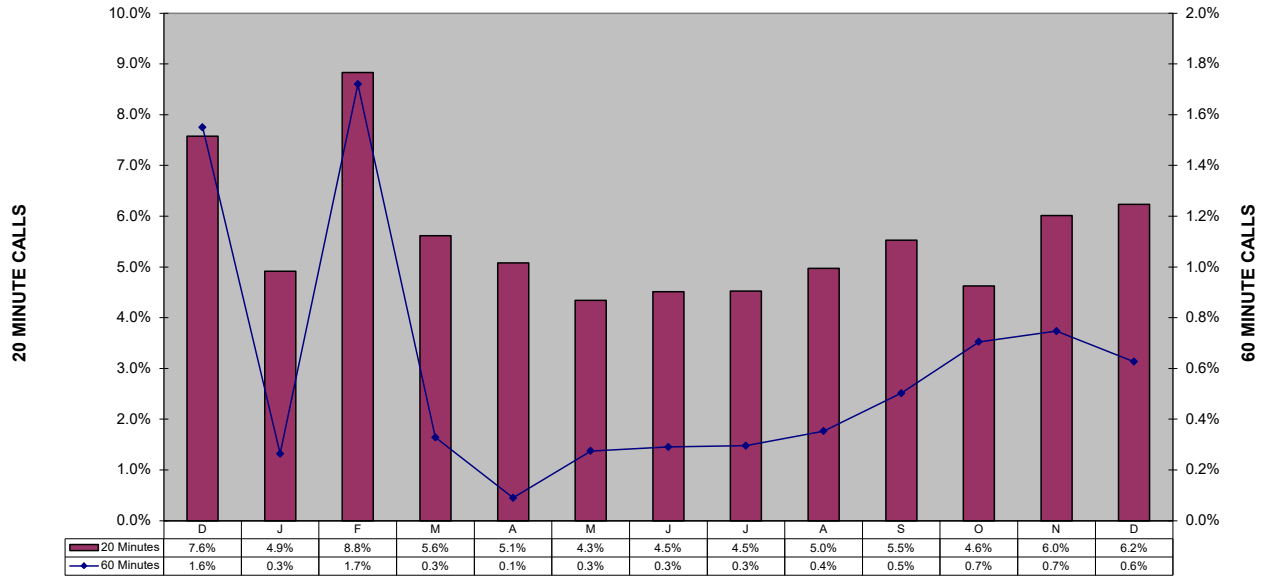
Shoplifting 5-Year Comparison



**Police Calls for Service - 12 Month Trend
December 2022**

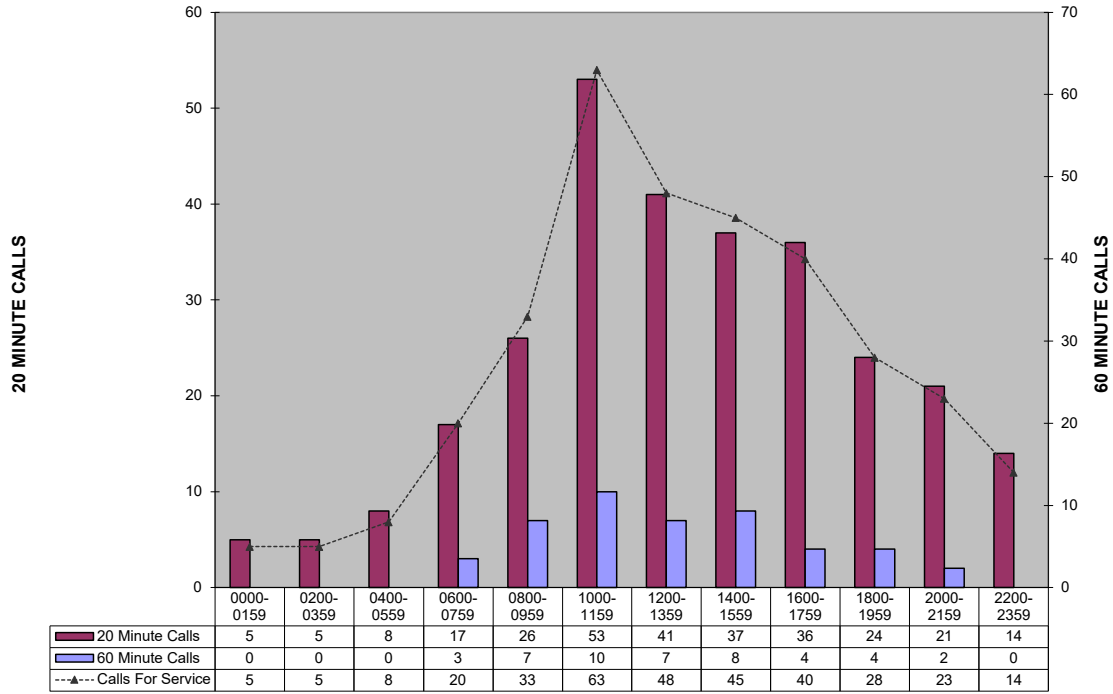


Percent of Police Calls Held 20 and 60 Minutes
December 2021 to December 2022

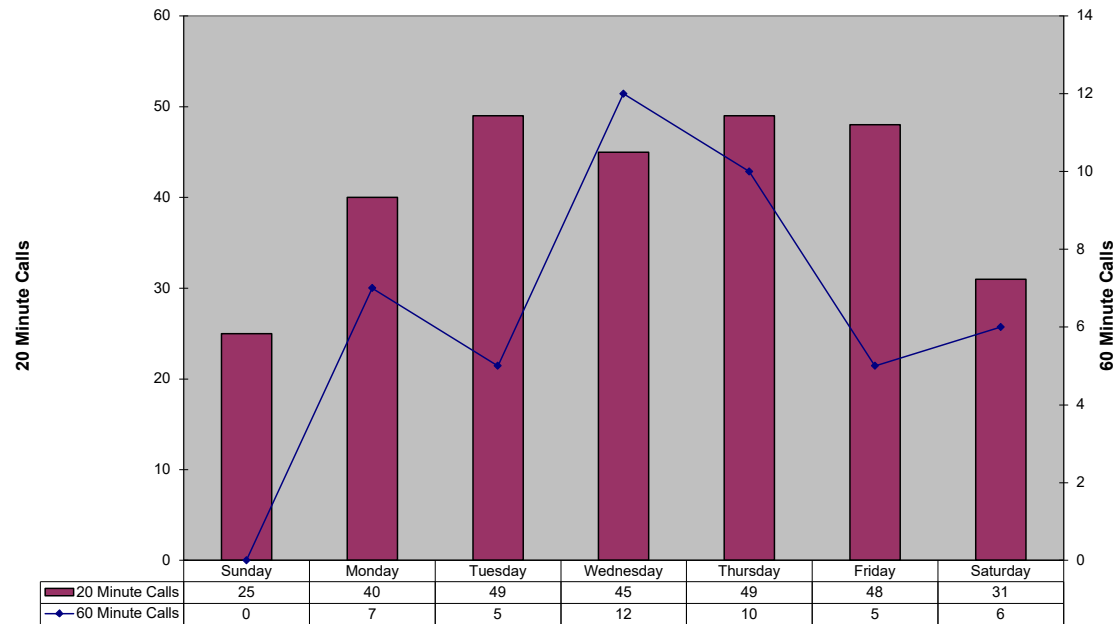


This section intentionally left blank.

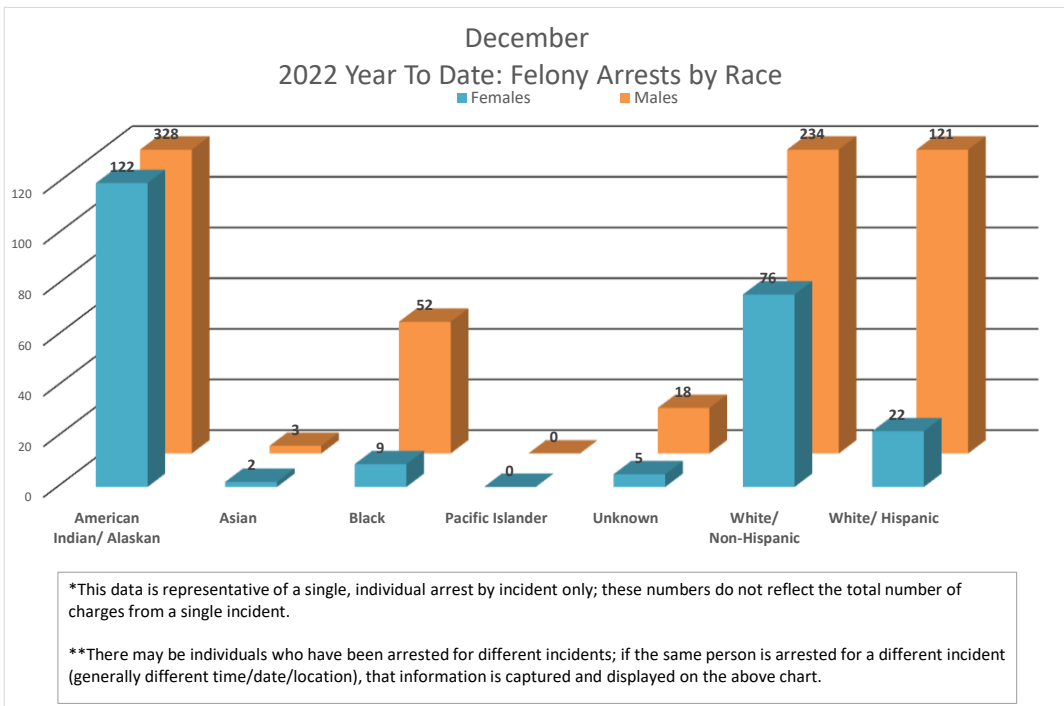
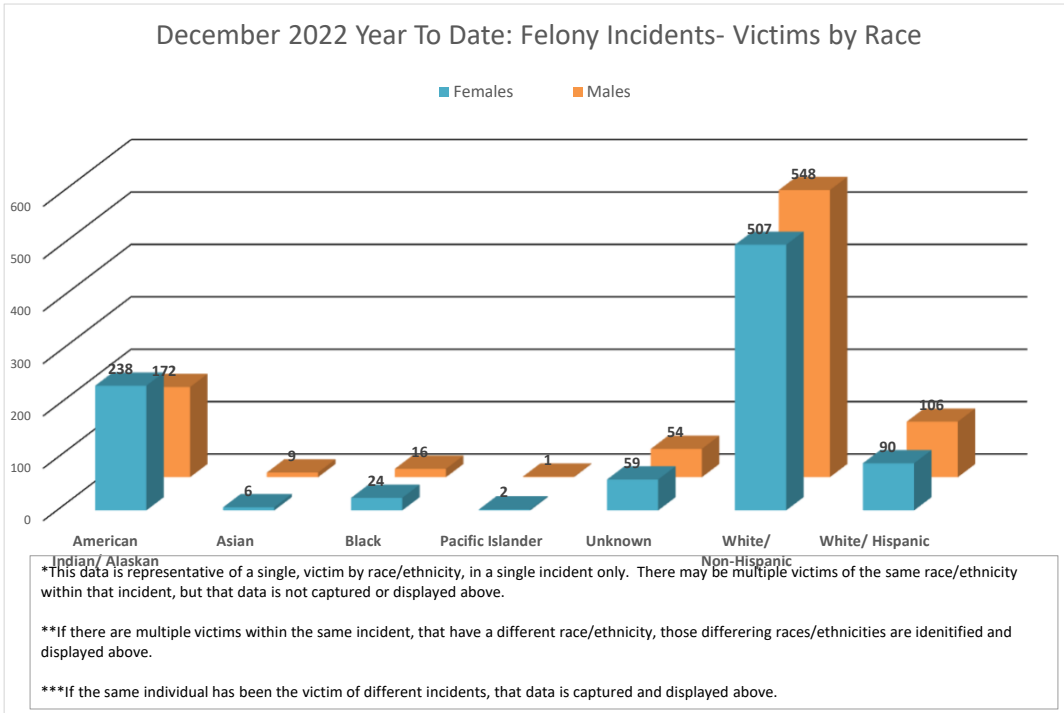
20 and 60 Minute Calls Held by Time of Day (This custom report is being configured)



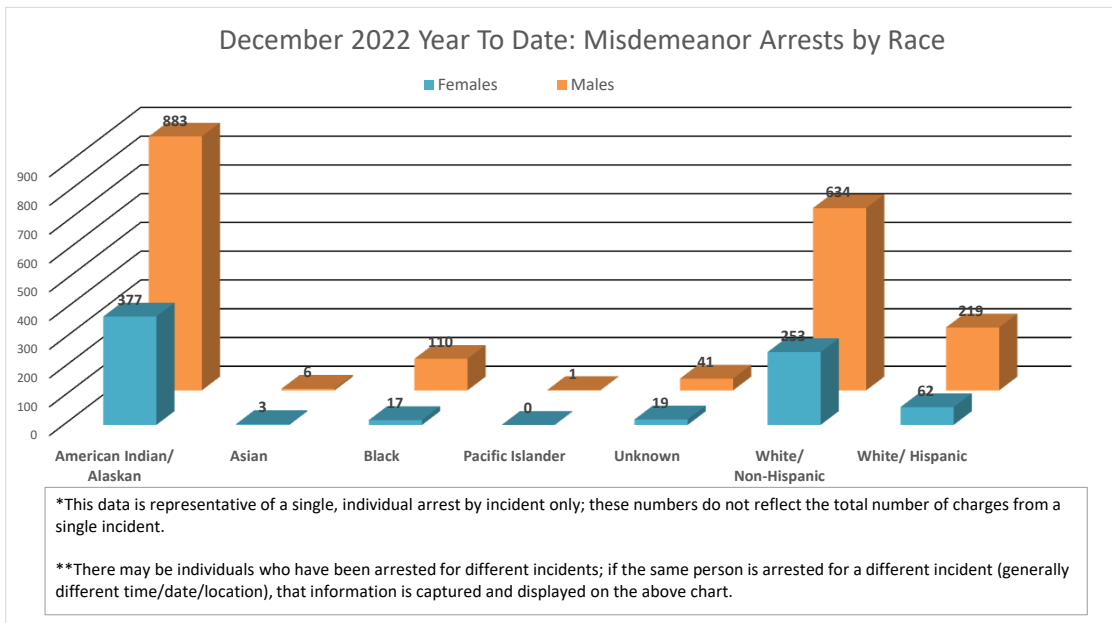
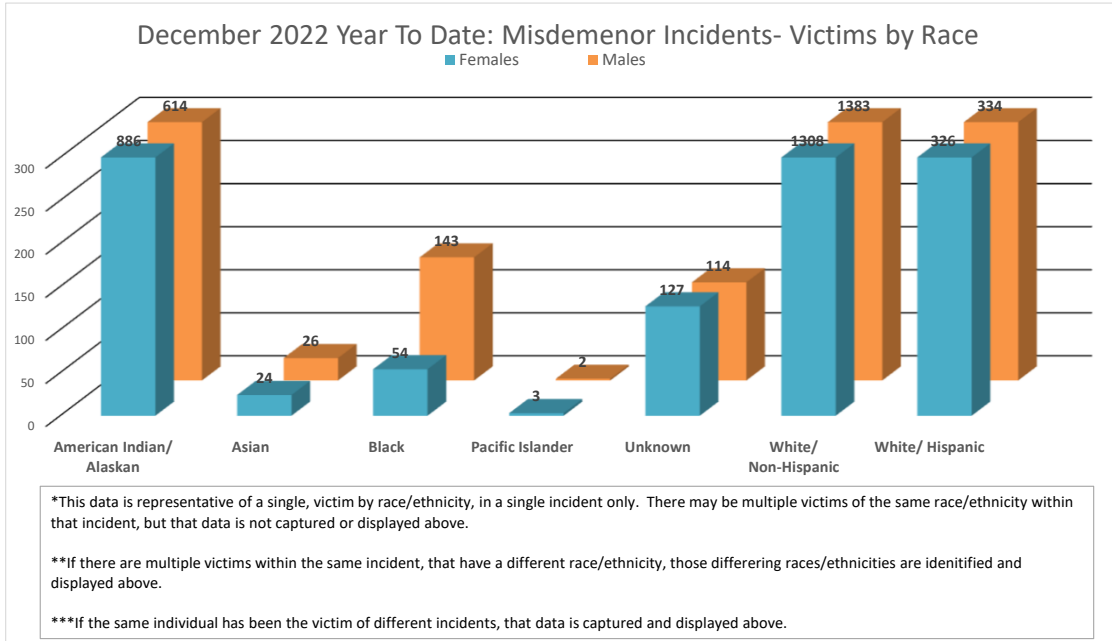
20 and 60 Minute Calls Holding by Day of Week (This custom report is being configured)



In an effort to be more transparent, we have started presenting arrest and victimization rates year to date. These statistics are currently being impacted by trends related to the Covid -19 pandemic. Flagstaff has seen less visitation and tourism, and a reduction in our college student population. This has positively manifested itself in reduced criminality and arrests in some areas. Our community is one of only a few that has provided additional housing options for homeless populations. This has drawn more homeless individuals to Flagstaff. Unfortunately, we continue to see Native American members of our homeless population over-represented in both arrest and victimization data. Many of these arrests are on those who are not City residents, and many of these arrests are of repeat offenders.



In an effort to be more transparent, we have started presenting arrest and victimization rates year to date. These statistics are currently being impacted by trends related to the Covid -19 pandemic. Flagstaff has seen less visitation and tourism, and a reduction in our college student population. This has positively manifested itself in reduced criminality and arrests in some areas. Our community is one of only a few that has provided additional housing options for homeless populations. This has drawn more homeless individuals to Flagstaff. Unfortunately, we continue to see Native American members of our homeless population over-represented in both arrest and victimization data. Many of these arrests are on those who are not City residents, and many of these arrests are of repeat offenders.





FLAGSTAFF POLICE DEPARTMENT MONTHLY REPORT
December 2022

	December	Y.T.D. 2022	Y.T.D. 2021	% CHANGE
CALLS FOR SERVICE (TOTAL)	2872	74110	75446	-1.8%
1. Police	1179	38111	39318	-3.1%
2. Sheriff	1259	16260	17540	-7.3%
3. City Fire	251	15702	15323	2.5%
4. Rural Fire	6	3339	3077	8.5%
5. Forest Service	1	100	151	-33.8%
6. US NPS	0	27	37	
REPORTS TAKEN (TOTAL)	1237	17297	17227	0.4%
1. Misdemeanor	515	7591	7598	-0.1%
2. Felony	152	2479	2647	-6.3%
3. Incident	631	7288	6982	4.4%
Accident	212	2561	2661	-3.8%
Incident - no report	1635	22741	23176	-1.9%
Short Form Reports	1	111	233	-52.4%
Violent Crimes	16	293	240	22.1%
Property Crimes	137	1894	1709	10.8%
ARRESTS (TOTAL)	284	4041	4455	-9.3%
1. Misdemeanor arrests	214	3000	3402	-11.8%
2. Felony Arrests	70	996	1053	-5.4%
In-Custody Bookings	189	2739	3430	-20.1%
Juvenile Arrests	8	58	41	41.5%
Juvenile Referrals	8	125	110	13.6%
Warrant Arrests	29	408	353	15.6%
TRAFFIC ACCIDENTS (TOTAL)				
Includes Private Property	212	2561	2661	-3.8%
1. Non-Injury Accidents	183	2089	2272	-8.1%
2. Injury Accidents	29	467	380	22.9%
3. Fatal Accidents	0	5	9	200.0%
Private Property Accidents	50	664	749	-11.3%
DUI Related Accidents	9	85	91	-6.6%
CITATIONS ISSUED (TOTAL)	305	4386	6049	-27.5%
1. Traffic	169	2438	3799	-35.8%
D.U.I.'s	33	513	639	-19.7%
2. Criminal (Non-Traffic)	136	1948	2250	-13.4%
WARNING & REPAIR ORDERS	565	6030	7251	-16.8%
FIELD I.D. CARDS	335	4614	7722	-40.2%
PI CONTACTS	48	1016	2251	-54.9%
DETECTIVES				
1. Cases Assigned	226	3149	3165	-0.5%
2. Cases Cleared	109	1554	1678	-7.4%
3. Clearance Rate	48%	49.3%	53.0%	-3.7%
DOMESTIC VIOLENCE				
1. Incidents Reported	124	1869	1741	7.4%
a. Misdemeanor	105	1571	1473	6.7%
b. Felony	19	298	268	11.2%
2. Arrests	37	644	644	0.0%

Shaded areas indicate YTD adjustments



**FLAGSTAFF POLICE DEPARTMENT MONTHLY REPORT
December 2022**

	December	Y.T.D. 2022	Y.T.D. 2021	% CHANGE
COMMUNITY RELATIONS & TRAINING				
1. Public Speaking Presentations Includes Media Releases	90	997	880	13.3%
2. Training - Total Hours	2450	32311.25	17116	88.8%
Academy	1368	16040	9048	77.3%
Field Training	672	8472	4475.5	89.3%
Advance Officer Training	410	7799.25	6450.5	20.9%
3. Volunteer Hours	201.5	1182.75	1427.75	-17.2%
4. Community Support Mtg.	20	240	734	-67.3%
ANIMAL CONTROL (PATROL)				
1. Impounds	9	324	307	5.5%
2. Citations	0	1	13	-92.3%
PATROL HOURS IN FIELD	8,489	106741.5	116741	-8.6%

PERSONNEL	Field Operations	Support Services		
1. Authorized Strength	119	57		
2. Actual Strength	107	40		
3. Resignations or Terminations	1	4		
4. New Hires	0	0		

This section intentionally left blank.