

# CompStat Report

FLAGSTAFF POLICE DEPARTMENT

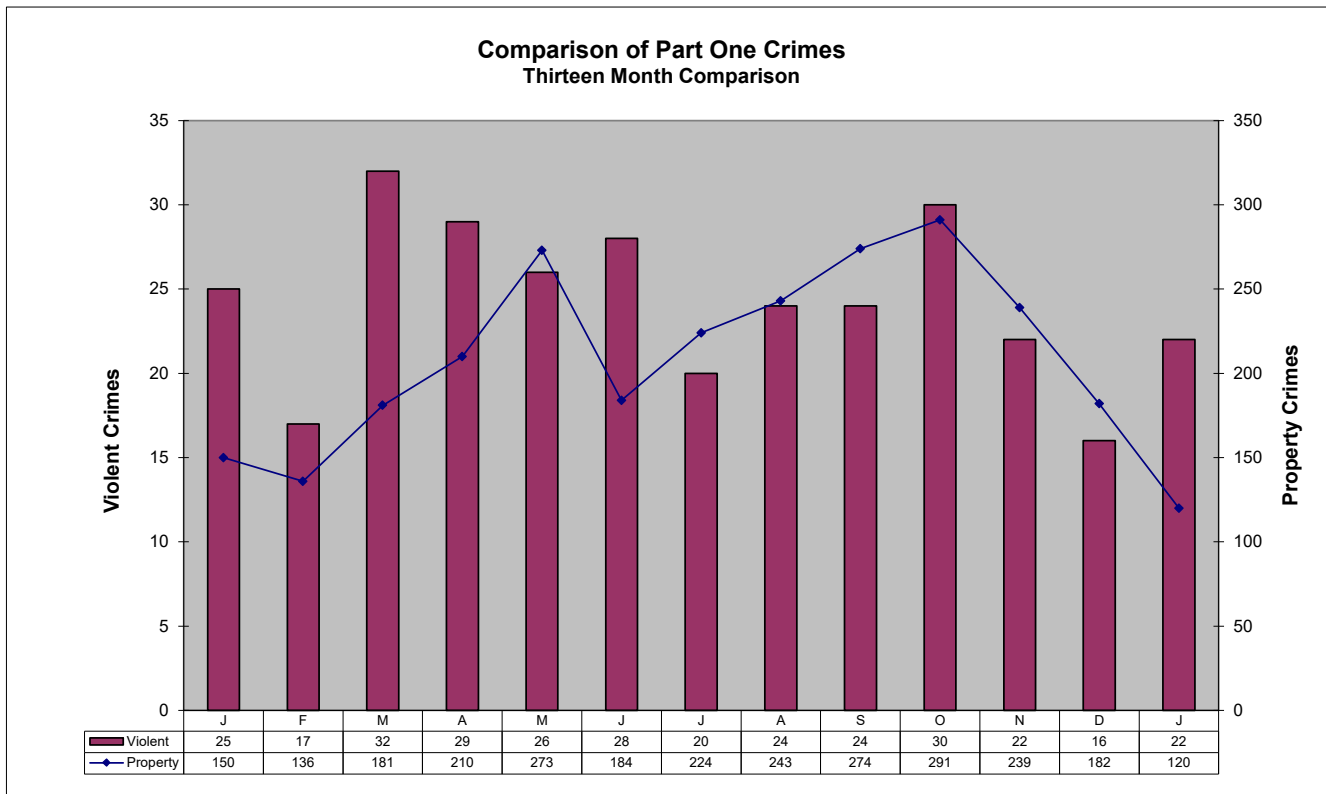
January 2023



*ad honorem*

## Part One Crime Summary January 2023

CRIME TYPE	Oct	Nov	Dec	Jan	YTD		%	CLEARED	% CLEARED	
					2023	2022	Change	2023	2023	2022
HOMICIDE*	0	0	0	0	0	1	-100%	0	0%	0%
SEX OFFENSES*	10	6	4	10	10	9	11%	4	40%	111%
SEX ASSAULTS	6	3	1	6	6	4	50%	1	17%	125%
ROBBERY*	5	1	2	1	1	2	-50%	1	100%	0%
AGG ASSAULT*	15	15	10	11	11	13	-15%	8	73%	69%
BURGLARY	10	10	4	1	1	7	-86%	0	0%	0%
LARC THEFT	188	149	124	116	116	108	7%	40	0%	94%
GTA	8	1	9	3	3	12	-75%	3	0%	42%
<b>VIOLENT*</b>	30	22	16	22	22	25	-12%	13	59%	76%
<b>PROPERTY</b>	291	239	182	120	120	150	-20%	40	33%	71%
<b>GRAND TOTAL</b>	321	261	198	142	142	175	-19%	53	37%	72%
ARSON	1	0	0	0	0	4	-100%	0	0%	50%

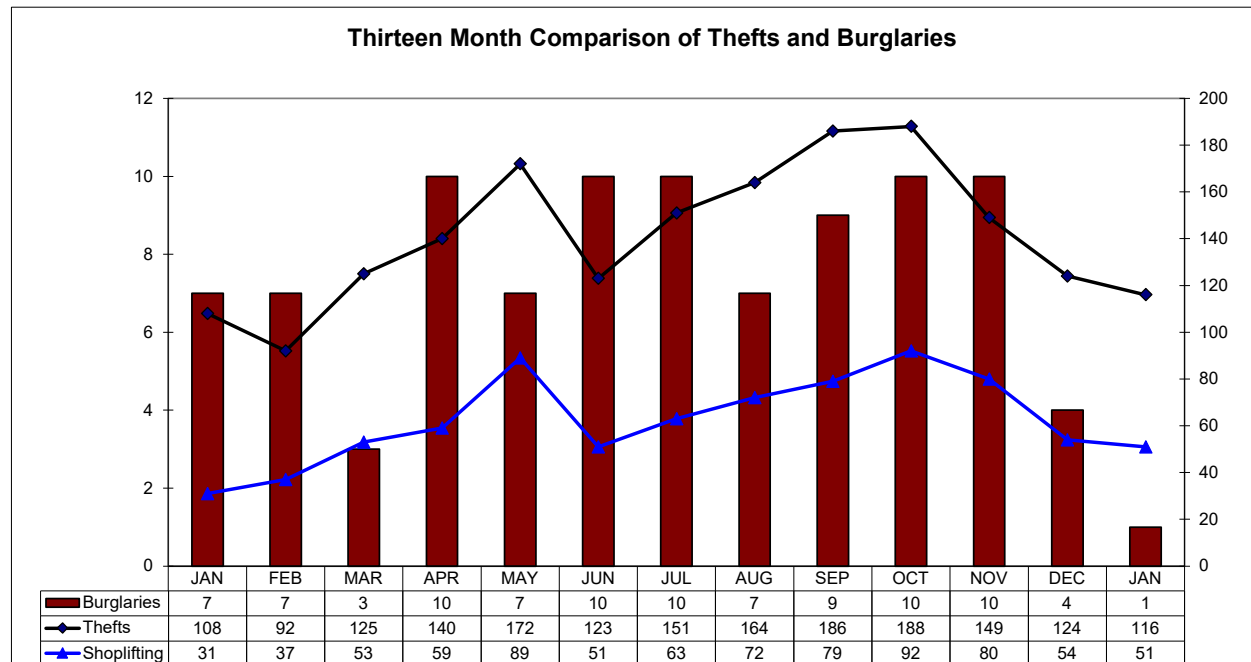
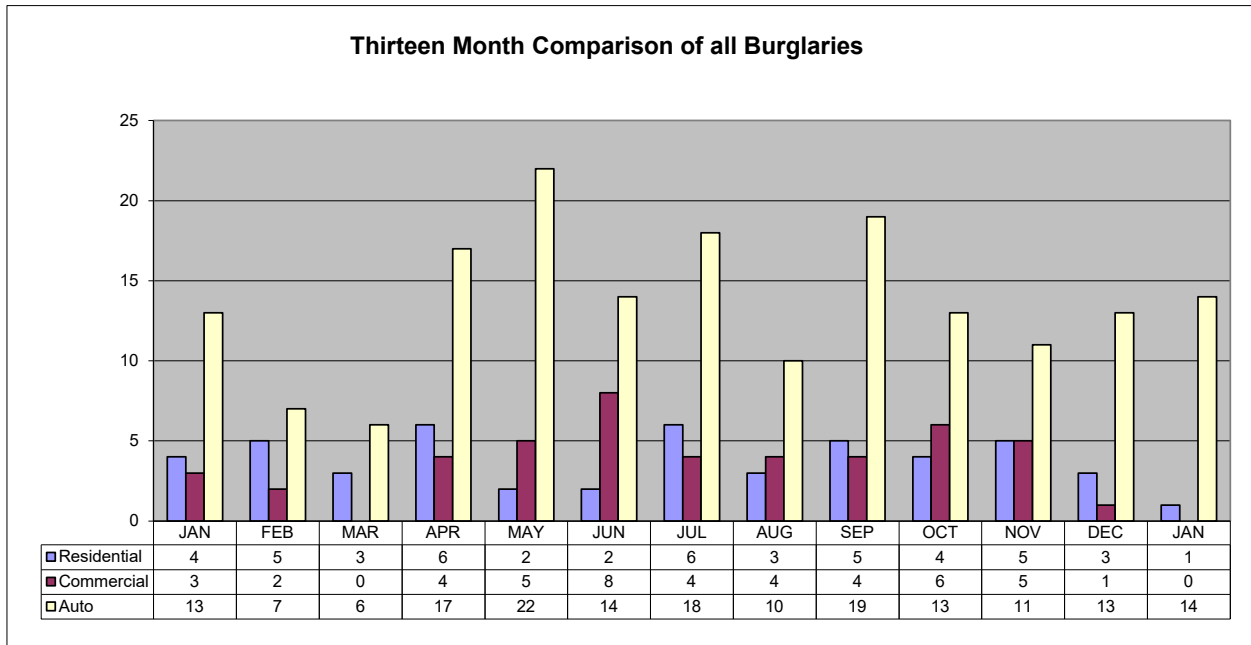


# Patrol Activity / Goals

## January 2023

ACTIVITY TYPE	Sept	Oct	Nov	Dec	Jan	YTD 2023	YTD 2022	% change
Robberies	5	6	3	1	1	1	2	-50%
Total Burglaries	9	10	10	4	1	1	7	-86%
Res Burglaries	10	15	15	10	1	1	4	-75%
Comm Burglaries	5	4	5	3	-	-	3	-100%
Auto Burglaries	4	6	5	1	14	14	13	8%
Shoplifting	79	92	80	54	51	51	31	65%
Citations/Warnings	559	614	802	734	687	687	933	-26%
DUI Arrests	37	44	42	33	51	51	46	11%
Collisions	237	261	208	212	288	288	313	-8%

**NOTE: In addition to the 46 DUI Arrests, there are 5 pending blood results.**

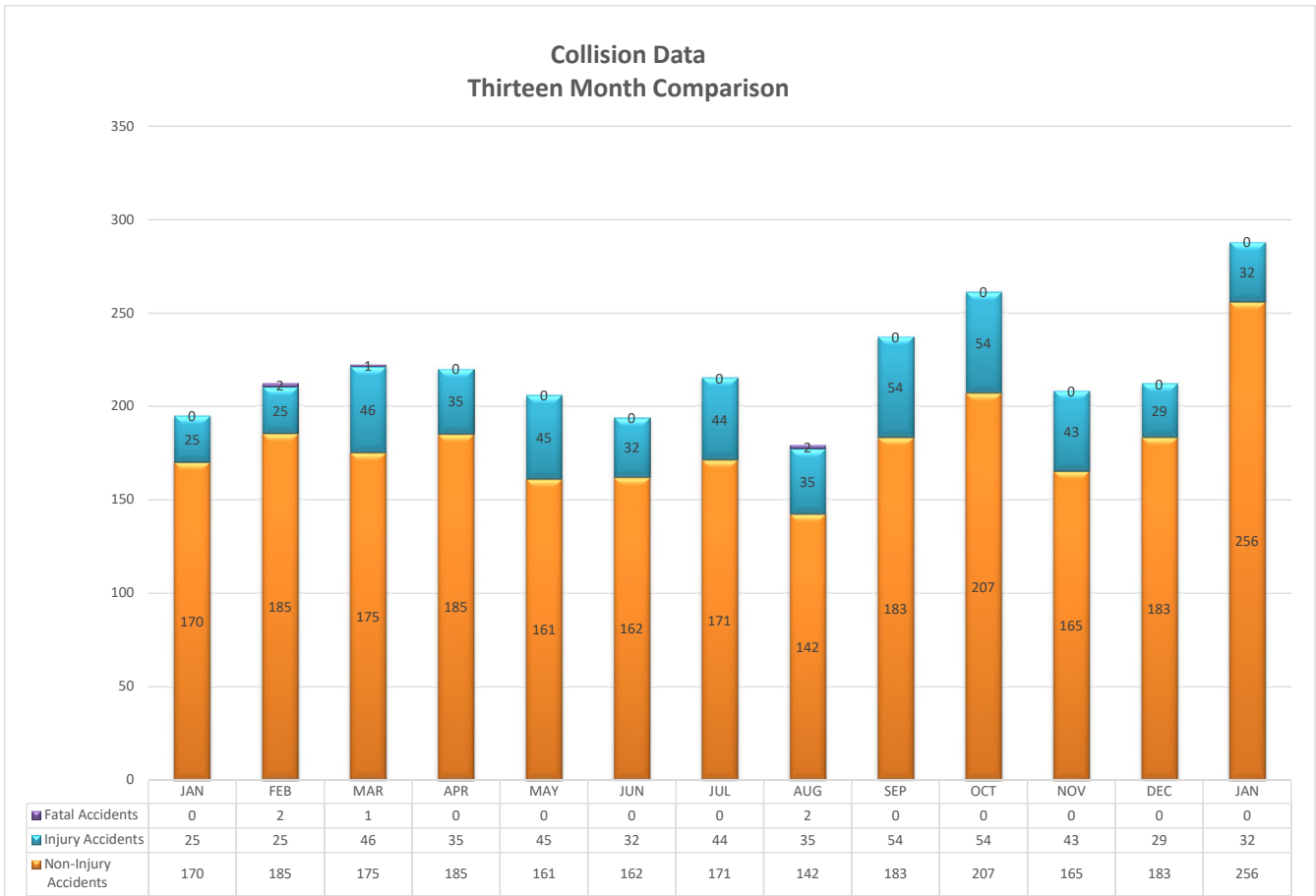


# TRAFFIC DATA

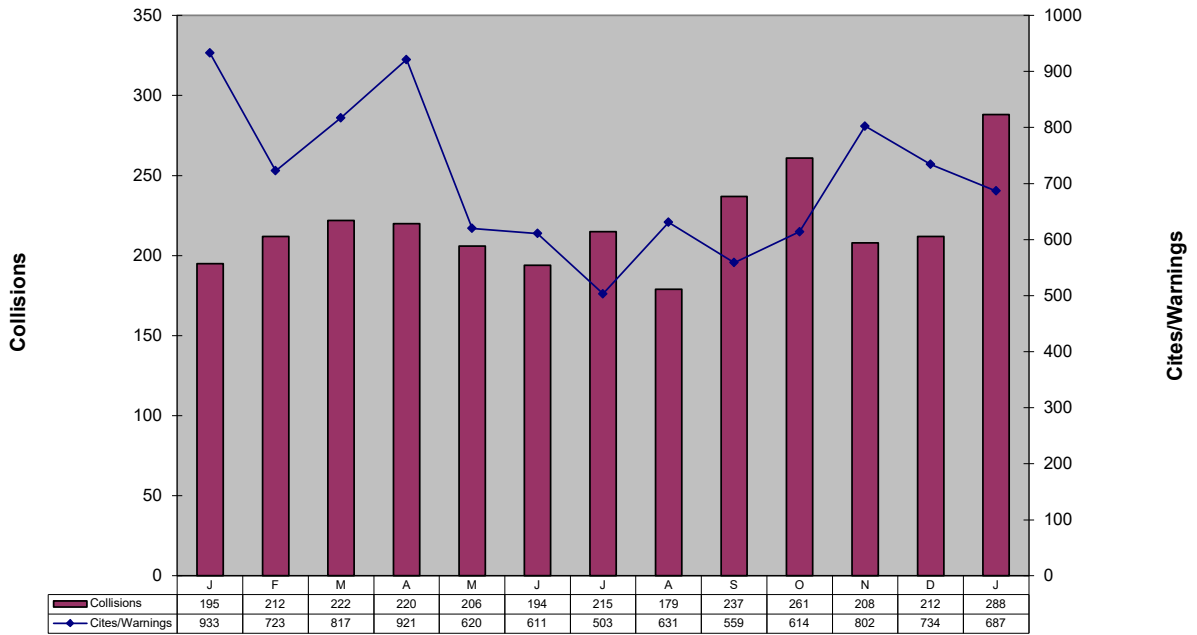
January 2023

ACTIVITY TYPE	Sept	Oct	Nov	Dec	Jan	YTD	YTD	%
						2022	2023	Change
Non-Injury Collisions	183	207	165	183	256	170	256	51%
Injury Collisions	54	54	43	29	32	25	32	28%
Fatal Collisions	0	0	0	0	0	0	0	0%
Private Property Collisions	49	64	36	50	55	60	55	-8%
DUI Related Collisions	4	10	9	9	9	4	9	125%
DUI Arrests (Total)	37	44	42	33	51	46	51	11%
DUI Arrests (Alcohol)	35	43	37	28	46	47	46	-2%
DUI Arrests (Drugs)	2	1	5	5	5	7	5	-29%
Traffic Citations	185	174	188	169	183	265	183	-31%
Warnings	374	440	614	565	504	668	504	-25%
Parking Citations	39	66	191	36	215	52	215	313%
All Traffic Stops	796	849	1,020	937	887	1,228	887	-28%
Traffic Stops-No Enfor	50	36	44	23	27	48	27	-44%
30-Day Impounds	9	5	5	6	7	10	7	-30%

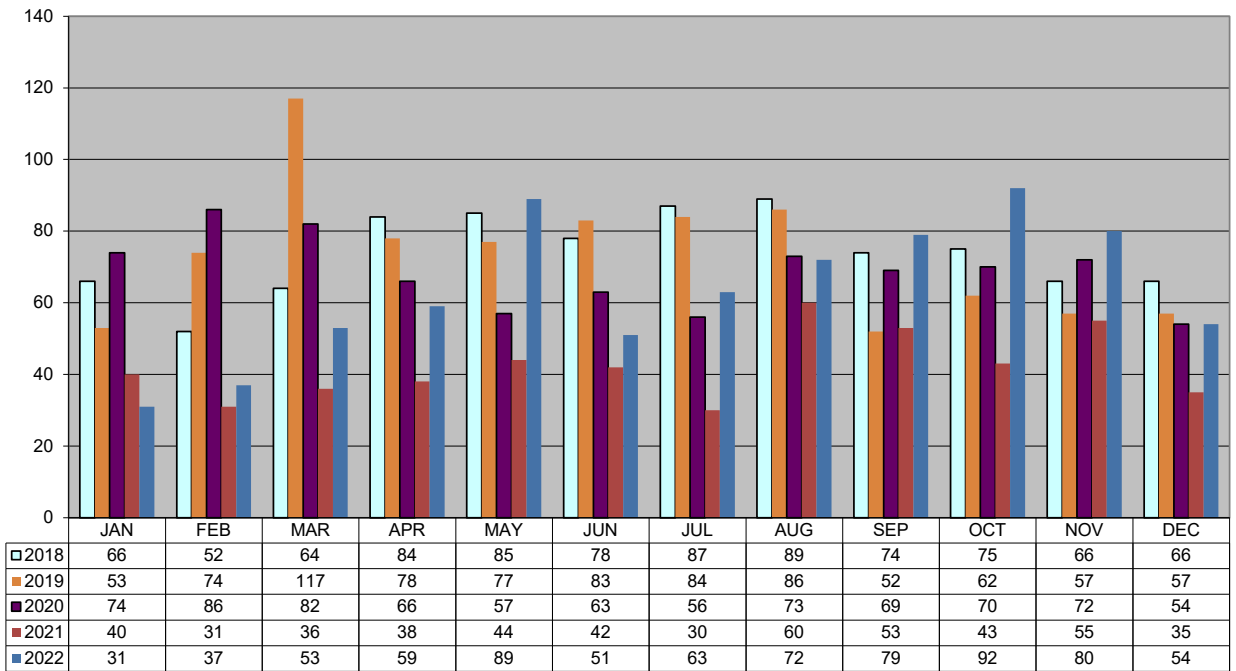
Shaded areas indicate YTD adjustments



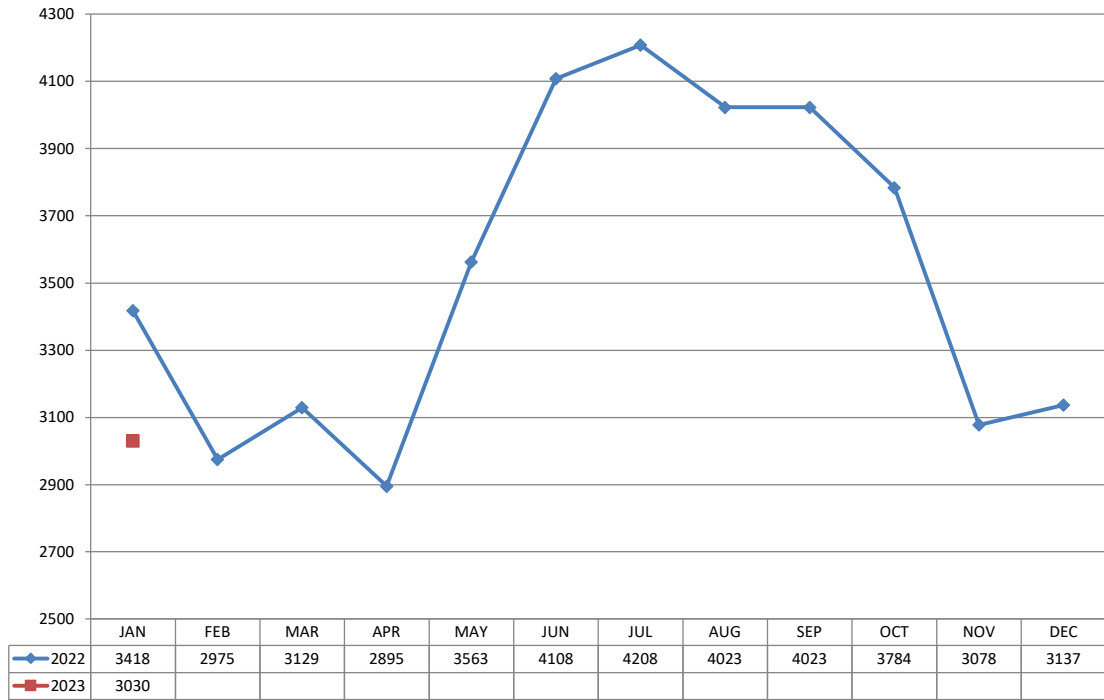
### Collision and Traffic Citation/Warning Data Thirteen Month Comparison



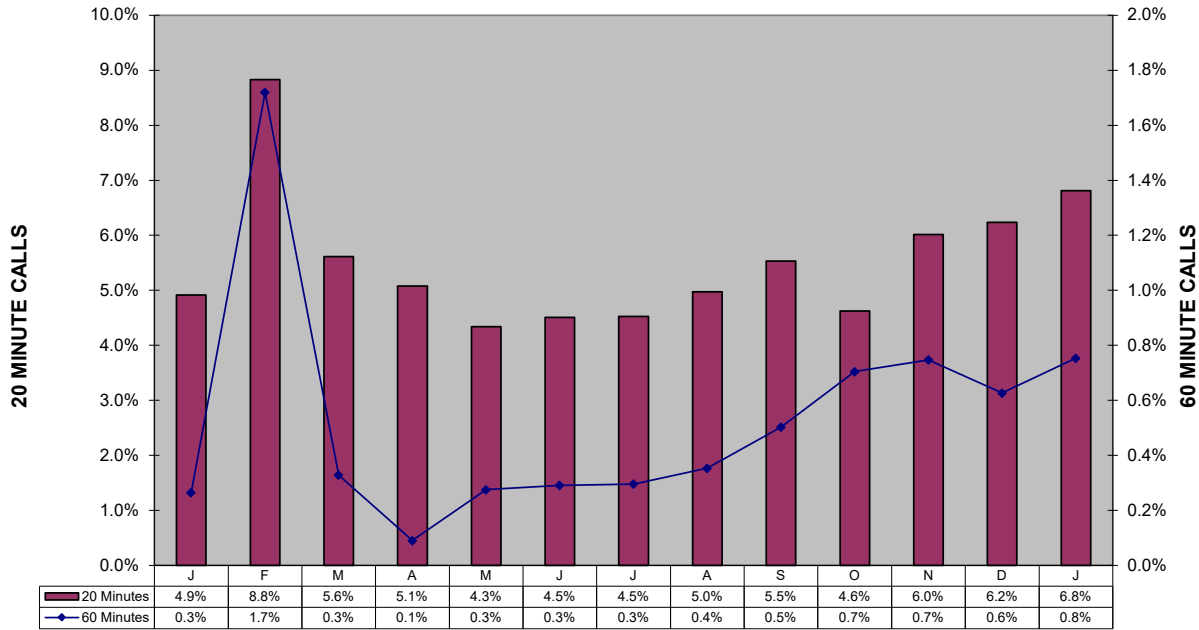
### Shoplifting 5-Year Comparison



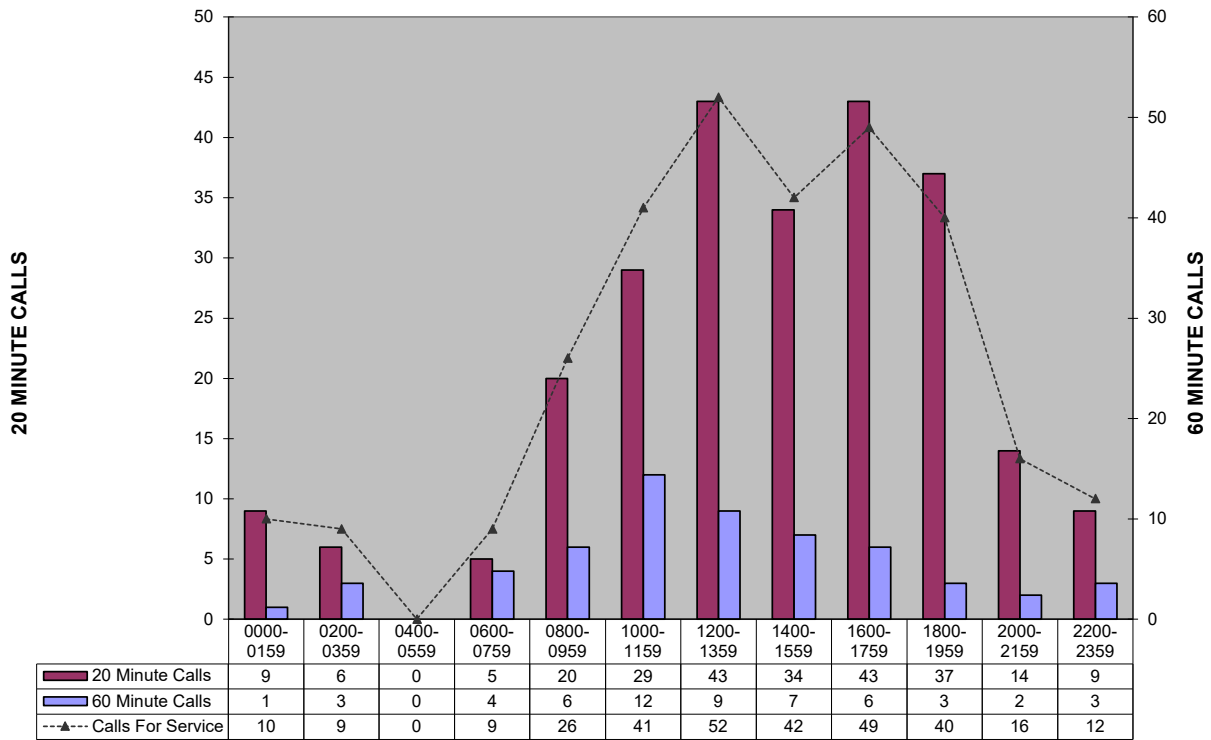
**Police Calls for Service - 12 Month Trend**



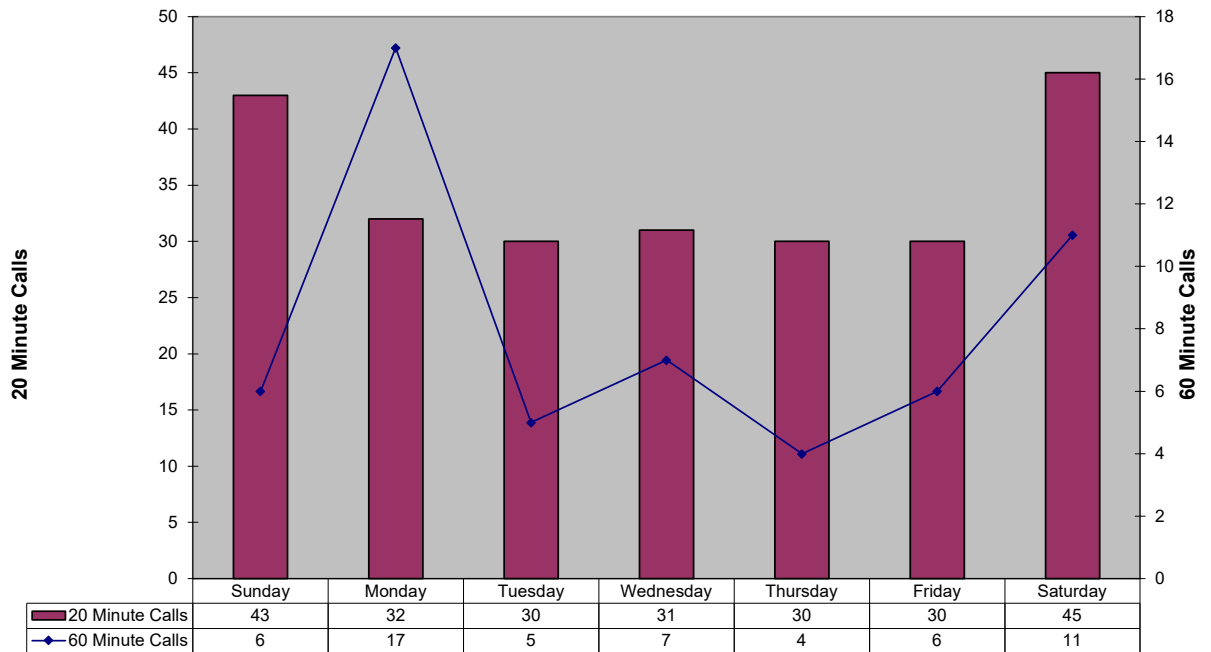
**Percent of Police Calls Held 20 and 60 Minutes  
Thirteen Month Comparison**



**20 and 60 Minute Calls Held by Time of Day**

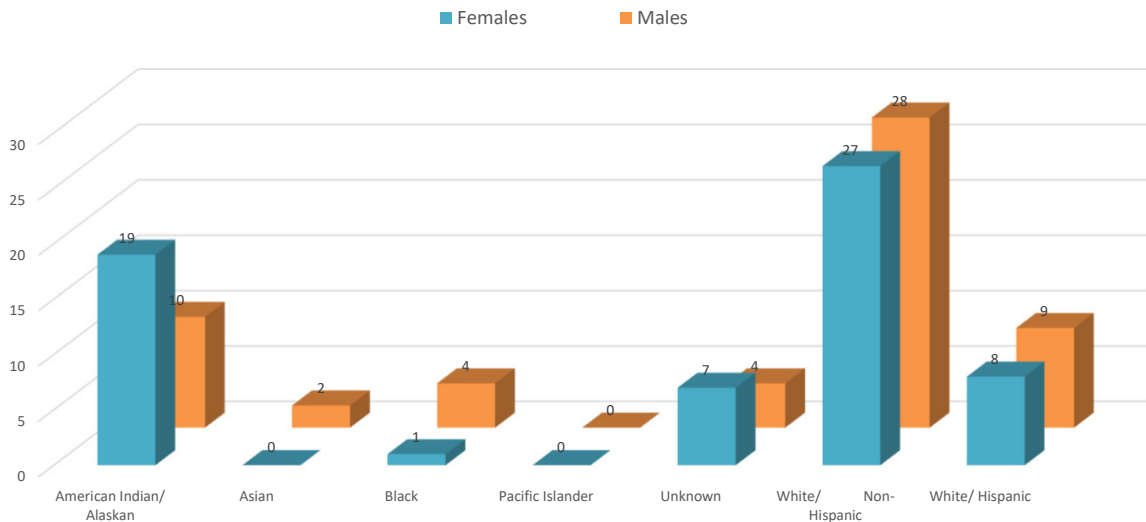


**20 and 60 Minute Calls Holding by Day of Week**



In an effort to be more transparent, we have started presenting arrest and victimization rates year to date. These statistics are currently being impacted by trends related to the Covid -19 pandemic. Flagstaff has seen less visitation and tourism, and a reduction in our college student population. This has positively manifested itself in reduced criminality and arrests in some areas. Our community is one of only a few that has provided additional housing options for homeless populations. This has drawn more homeless individuals to Flagstaff. Unfortunately, we continue to see Native American members of our homeless population over-represented in both arrest and victimization data. Many of these arrests are on those who are not City residents, and many of these arrests are of repeat offenders.

### Felony Incidents: Victims by Race

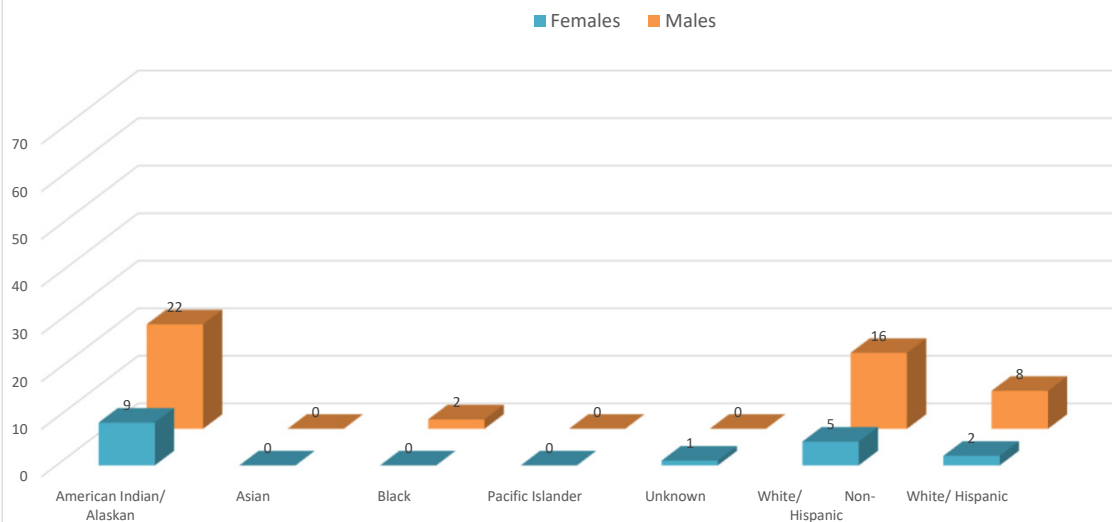


\*This data is representative of a single, victim by race/ethnicity, in a single incident only. There may be multiple victims of the same race/ethnicity within that incident, but that data is not captured or displayed above.

\*\*If there are multiple victims within the same incident, that have a different race/ethnicity, those differering races/ethnicities are identified and displayed above.

\*\*\*If the same individual has been the victim of different incidents, that data is captured and displayed above.

### Felony Arrests by Race

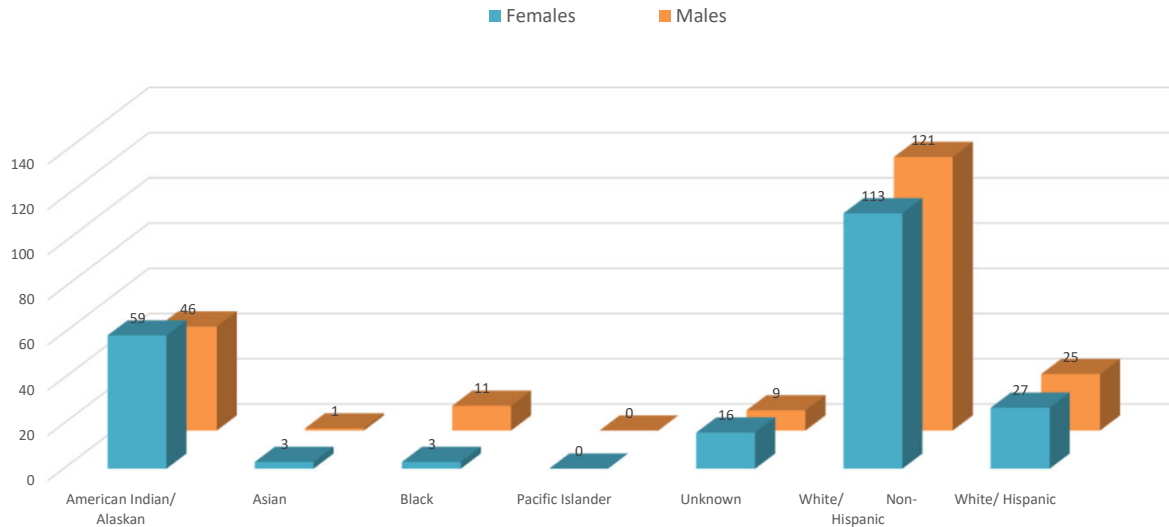


\*This data is representative of a single, individual arrest by incident only; these numbers do not reflect the total number of charges from a single incident.

\*\*There may be individuals who have been arrested for different incidents; if the same person is arrested for a different incident (generally different time/date/location), that information is captured and displayed on the above chart.

In an effort to be more transparent, we have started presenting arrest and victimization rates year to date. These statistics are currently being impacted by trends related to the Covid -19 pandemic. Flagstaff has seen less visitation and tourism, and a reduction in our college student population. This has positively manifested itself in reduced criminality and arrests in some areas. Our community is one of only a few that has provided additional housing options for homeless populations. This has drawn more homeless individuals to Flagstaff. Unfortunately, we continue to see Native American members of our homeless population over-represented in both arrest and victimization data. Many of these arrests are on those who are not City residents, and many of these arrests are of repeat offenders.

### Misdemeanor Incidents: Victims by Race

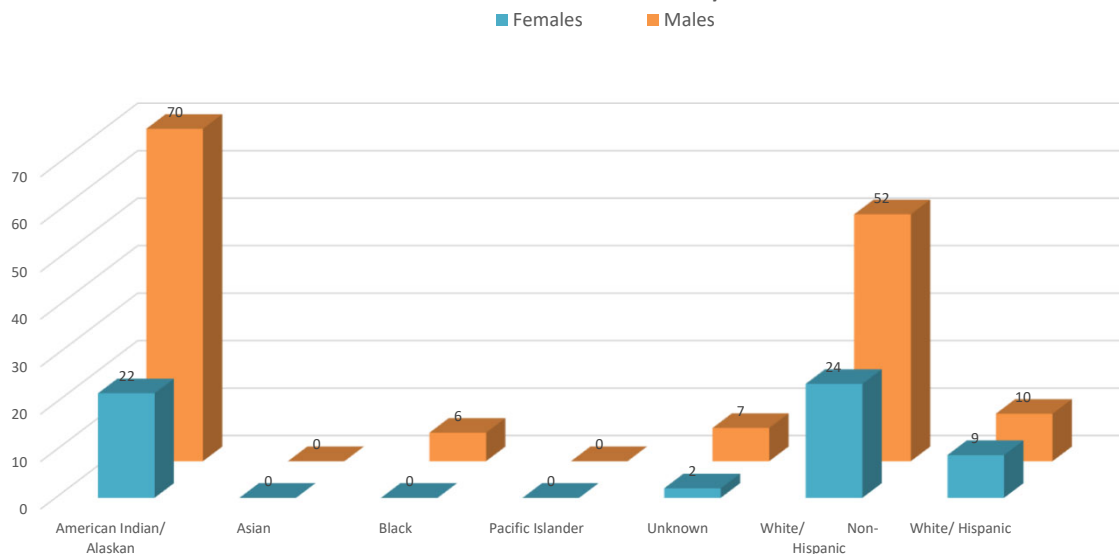


\*This data is representative of a single, victim by race/ethnicity, in a single incident only. There may be multiple victims of the same race/ethnicity within that incident, but that data is not captured or displayed above.

\*\*If there are multiple victims within the same incident, that have a different race/ethnicity, those differering races/ethnicities are identified and displayed above.

\*\*\*If the same individual has been the victim of different incidents, that data is captured and displayed above.

### Misdemeanor Arrests by Race



\*This data is representative of a single, individual arrest by incident only; these numbers do not reflect the total number of charges from a single incident.

\*\*There may be individuals who have been arrested for different incidents; if the same person is arrested for a different incident (generally different time/date/location), that information is captured and displayed on the above chart.





## FLAGSTAFF POLICE DEPARTMENT MONTHLY REPORT January 2023

	JANUARY	Y.T.D. 2023	Y.T.D. 2022	% CHANGE
<b>CALLS FOR SERVICE (TOTAL)</b>	6,256	6,256	5,816	7.6%
1. Police	3,186	3,186	3,030	5.1%
2. Sheriff	1,534	1,534	1,320	16.2%
3. City Fire	1,224	1,224	1,232	-0.6%
4. Rural Fire	287	287	233	23.2%
5. Forest Service	24	24	1	2300.0%
6. US NPS	1	1	-	
<b>REPORTS TAKEN (TOTAL)</b>	1,303	1,303	1,488	-12.4%
1. Misdemeanor	551	551	609	-9.5%
2. Felony	146	146	215	-32.1%
3. Incident	606	606	664	-8.7%
Accident	288	288	195	47.7%
Incident - no report	1,784	1,784	1,542	15.7%
Short Form Reports	3	3	8	-62.5%
Violent Crimes	22	22	25	-12.0%
Property Crimes	120	120	131	-8.4%
<b>ARRESTS (TOTAL)</b>	310	310	313	-1.0%
1. Misdemeanor arrests	203	203	228	-11.0%
2. Felony Arrests	68	68	85	-20.0%
In-Custody Bookings	248	248	174	42.5%
Juvenile Arrests	2	2	5	-60.0%
Juvenile Referrals	13	13	5	160.0%
Warrant Arrests	39	39	19	105.3%
<b>TRAFFIC ACCIDENTS (TOTAL)</b>				
<b>Includes Private Property</b>	288	288	195	47.7%
1. Non-Injury Accidents	256	256	170	50.6%
2. Injury Accidents	32	32	25	28.0%
3. Fatal Accidents	0	0	0	
Private Property Accidents	55	55	60	-8.3%
DUI Related Accidents	9	9	4	125.0%
<b>CITATIONS ISSUED (TOTAL)</b>	183	183	418	-56.2%
1. Traffic	186	186	265	-29.8%
D.U.I.'s	51	51	46	10.9%
2. Criminal (Non-Traffic)	114	114	153	-25.5%
<b>WARNING &amp; REPAIR ORDERS</b>	504	504	668	-24.6%
<b>FIELD I.D. CARDS</b>	346	346	434	-20.3%
<b>PI CONTACTS</b>	54	54	103	-47.6%
<b>DETECTIVES</b>				
1. Cases Assigned	206	206	278	-25.9%
2. Cases Cleared	52	52	150	-65.3%
3. Clearance Rate	25.2%	25.2%	54.0%	-28.7%
<b>DOMESTIC VIOLENCE</b>				
1. Incidents Reported	156	156	185	-15.7%
a. Misdemeanor	106	106	146	-27.4%
b. Felony	20	20	39	-48.7%
2. Arrests	51	51	65	-21.5%

Shaded areas indicate YTD adjustments



**FLAGSTAFF POLICE DEPARTMENT MONTHLY REPORT**  
**January 2023**

	<b>JANUARY</b>	<b>Y.T.D. 2023</b>	<b>Y.T.D. 2022</b>	<b>% CHANGE</b>
<b>COMMUNITY RELATIONS &amp; TRAINING</b>				
1. Public Speaking Presentations Includes Media Releases	93	93	106	-12.3%
2. Training - Total Hours	3,921	3,921	1,964	99.7%
Academy	840	840	760	10.5%
Field Training	2,112	2,112	592	256.8%
Advance Officer Training	969	969	612	58.4%
3. Volunteer Hours	130	130	54	140.3%
4. Community Support Mtg.	3	3	20	-85.0%
<b>ANIMAL CONTROL (PATROL)</b>				
1. Impounds	10	10	10	0.0%
2. Citations	-	-	-	0.0%
<b>PATROL HOURS IN FIELD</b>	8,780	8,780	9,944	-11.7%

<b>PERSONNEL</b>	<b>Field Operations</b>	<b>Support Services</b>		
1. Authorized Strength	119	57		
2. Actual Strength	111	39		
3. Resignations or Terminations	1	4		
4. New Hires	5	3		

Shaded areas indicate YTD adjustments