

CompStat Report

FLAGSTAFF POLICE DEPARTMENT

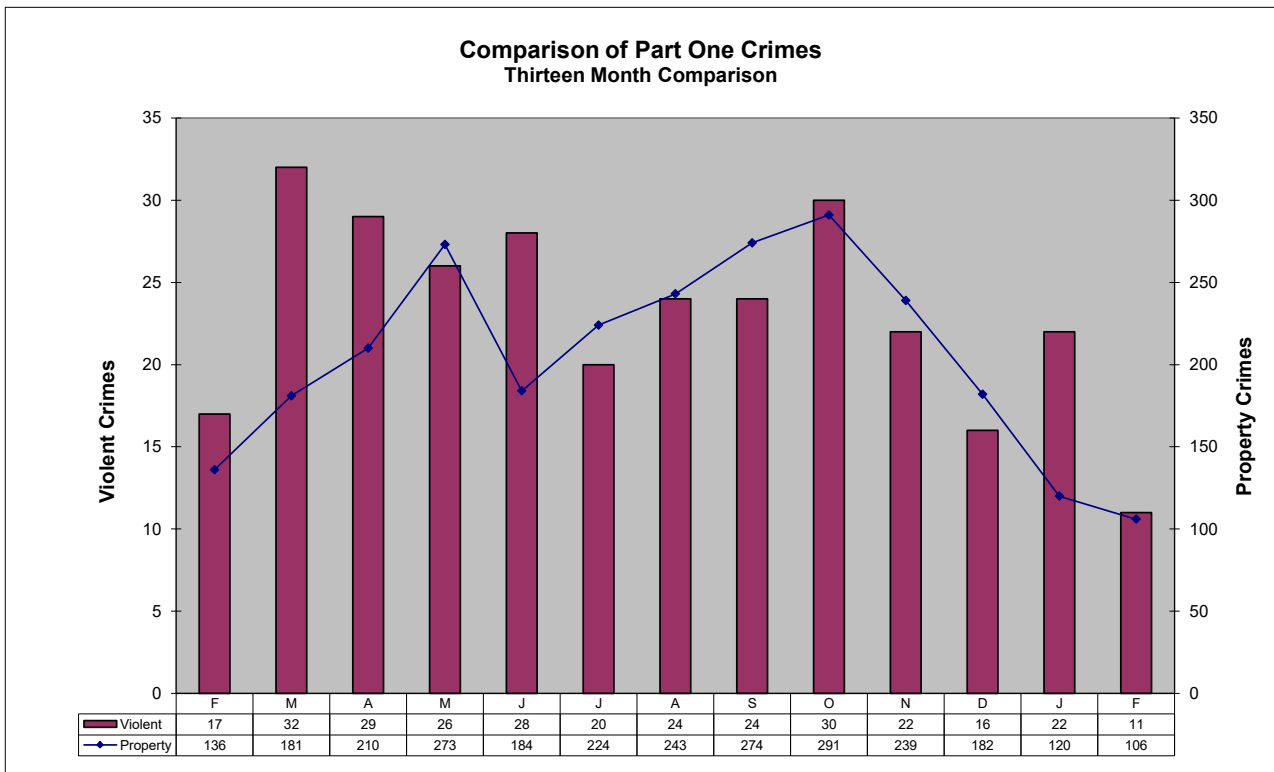
February 2023



Part One Crime Summary

February 2023

CRIME TYPE	Nov	Dec	Jan	Feb	YTD		%	CLEARED	% CLEARED	
					2023	2022			Change	2023
HOMICIDE*	0	0	0	0	0	1	-100%	0	0%	100%
SEX OFFENSES*	6	4	10	5	15	18	-17%	2	13%	89%
SEX ASSAULTS	3	1	6	1	7	9	-22%	1	14%	89%
ROBBERY*	1	2	1	2	3	5	-40%	3	100%	40%
AGG ASSAULT*	15	10	11	4	15	18	-17%	11	73%	83%
BURGLARY	10	4	1	7	8	14	-43%	1	13%	43%
LARC THEFT	149	124	116	97	213	200	6%	77	36%	62%
GTA	1	9	3	2	5	18	-72%	107	80%	33%
VIOLENT*	22	16	22	11	33	42	-21%	16	48%	81%
PROPERTY	123	94	120	106	226	286	-21%	78	35%	46%
GRAND TOTAL	261	198	142	117	259	328	-21%	94	36%	50%
ARSON	0	0	0	0	0	4	-100%	0	0%	50%



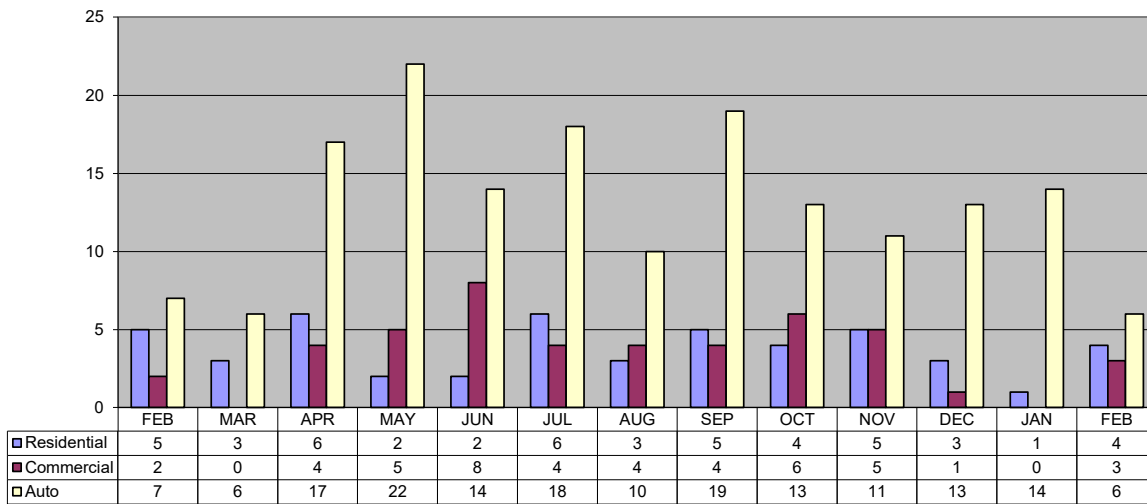
Patrol Activity / Goals

February 2023

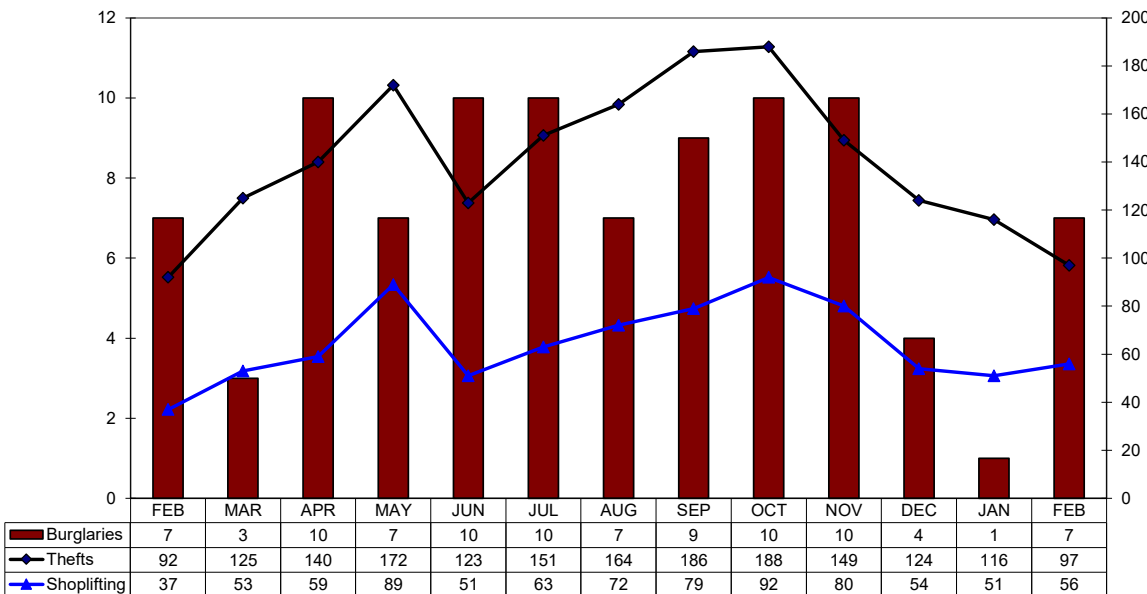
ACTIVITY TYPE	Oct	Nov	Dec	Jan	Feb	YTD 2023	YTD 2022	% change
	Robberies	5	1	2	1	2	3	5
Total Burglaries	10	10	4	1	7	8	14	-43%
Res Burglaries	4	5	3	1	4	5	9	-44%
Comm Burglaries	6	5	1	-	3	3	5	-40%
Auto Burglaries	13	11	13	14	6	20	20	0%
Shoplifting	92	80	54	51	56	107	31	245%
Citations/Warnings	614	802	734	600	687	1,287	1,656	-22%
DUI Arrests	44	42	33	51	56	107	95	13%
Collisions	261	208	212	288	237	525	407	29%

NOTE: In addition to the 40 DUI Arrests, there are 9 pending blood results.

Thirteen Month Comparison of all Burglaries



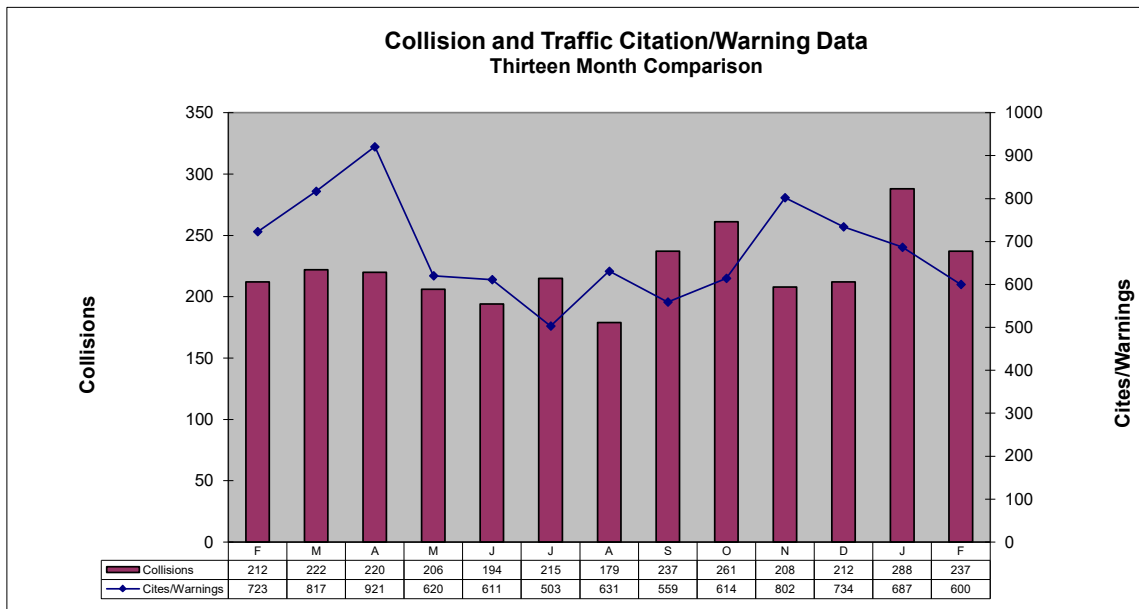
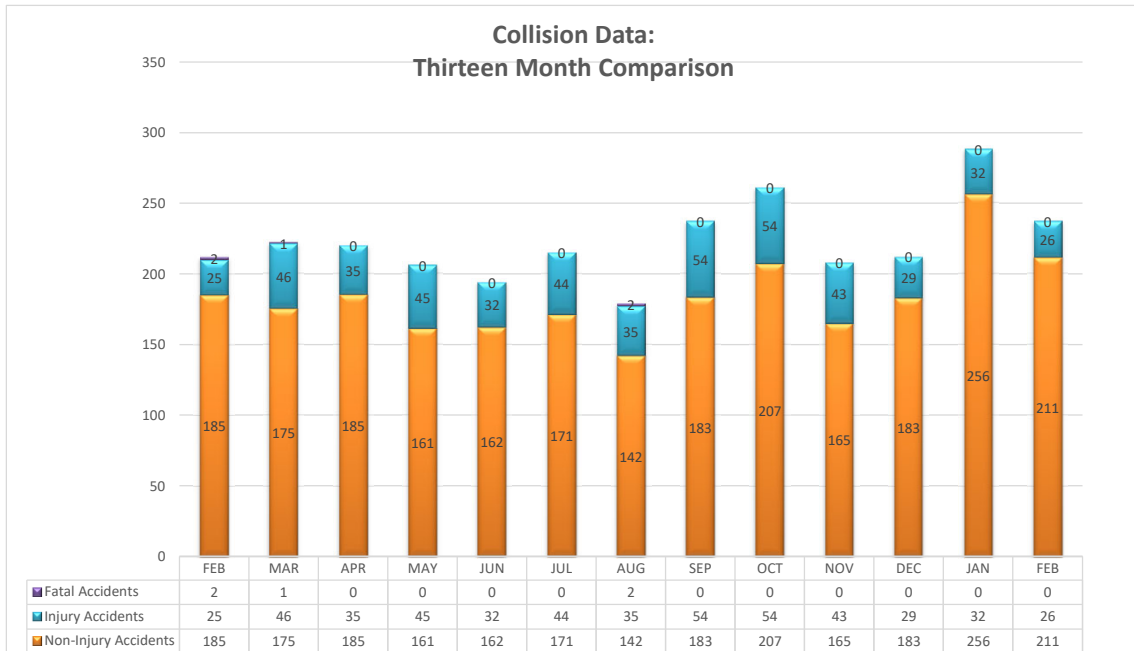
Thirteen Month Comparison of Thefts and Burglaries



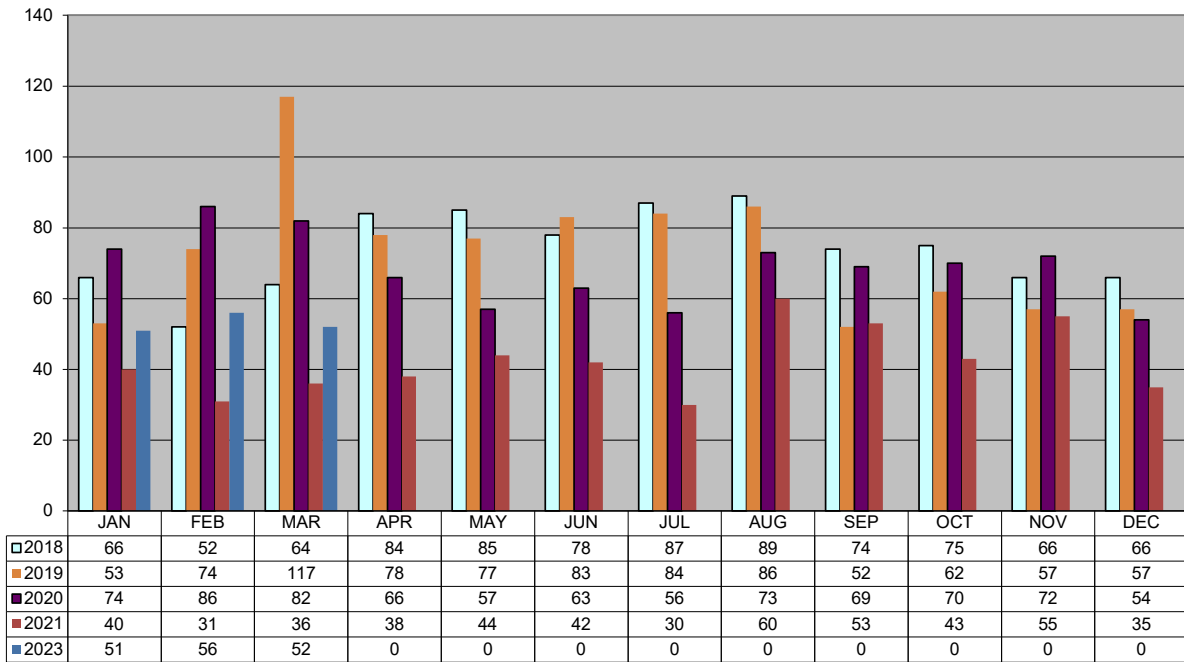
TRAFFIC DATA

February 2023

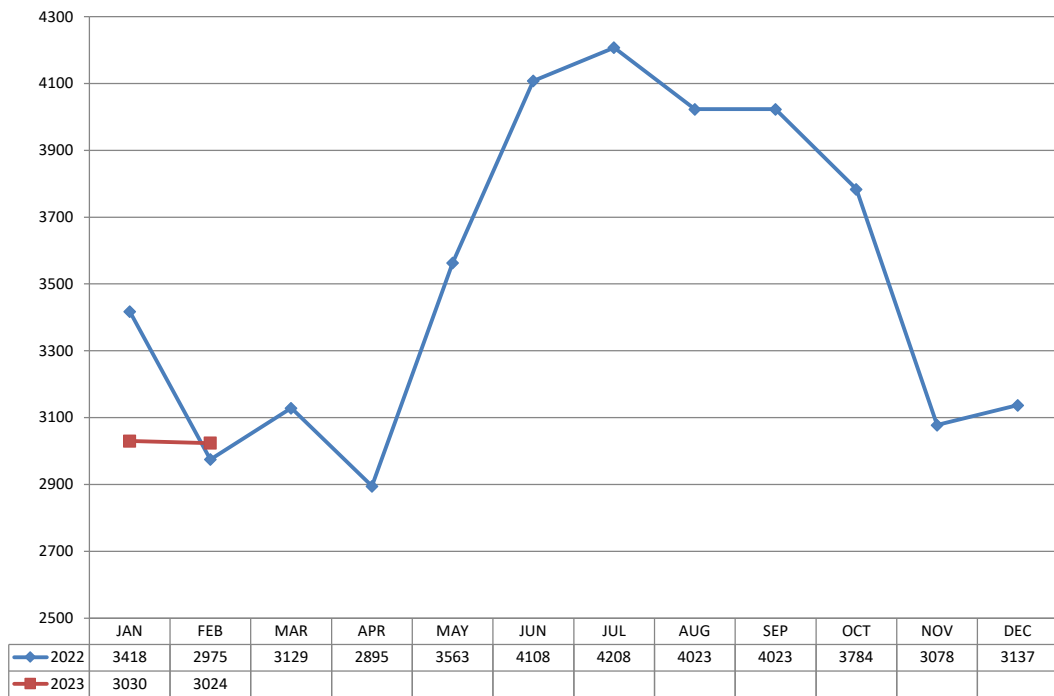
ACTIVITY TYPE	Oct	Nov	Dec	Jan	Feb	YTD 2023	YTD 2022	% Change
	Non-Injury Collisions	207	165	183	256	211	467	355
Injury Collisions	54	43	29	32	26	58	50	16%
Fatal Collisions	0	0	0	0	0	0	2	-100%
Private Property Collisions	64	36	50	55	53	108	115	-6%
DUI Related Collisions	10	9	9	9	10	19	12	58%
DUI Arrests (Total)	44	42	33	51	56	107	95	13%
DUI Arrests (Alcohol)	43	37	28	46	54	100	83	20%
DUI Arrests (Drugs)	1	5	5	5	2	7	12	-42%
Traffic Citations	174	188	169	183	162	345	463	-25%
Warnings	440	614	565	504	437	941	1,193	-21%
Parking Citations	66	191	36	215	403	618	129	379%
All Traffic Stops	849	1,020	937	887	786	1,673	2,159	-23%
Traffic Stops-No Enforcement	36	44	23	27	42	69	104	-34%
30-Day Impounds	5	5	6	7	11	18	20	-10%



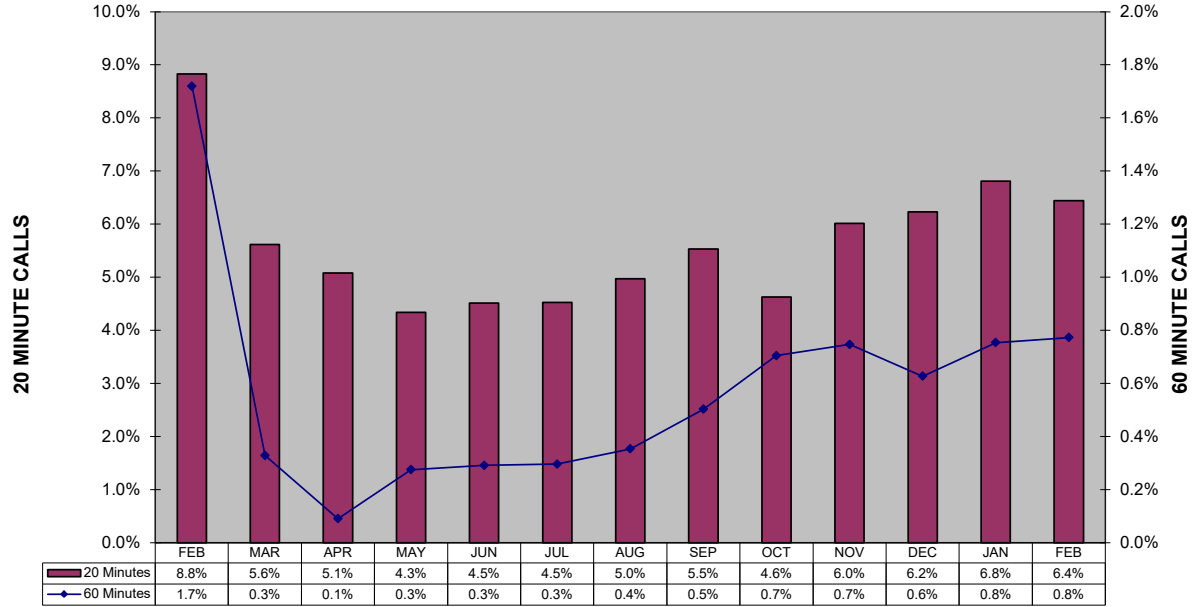
Shoplifting 5-Year Comparison



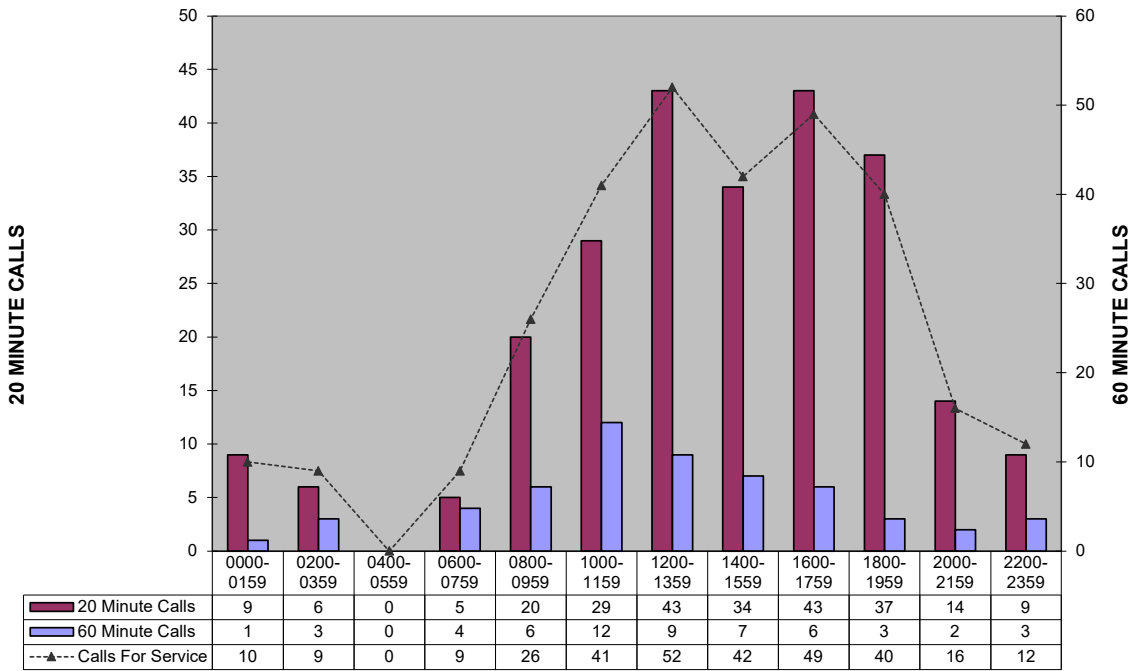
Police Calls for Service - 12 Month Trend



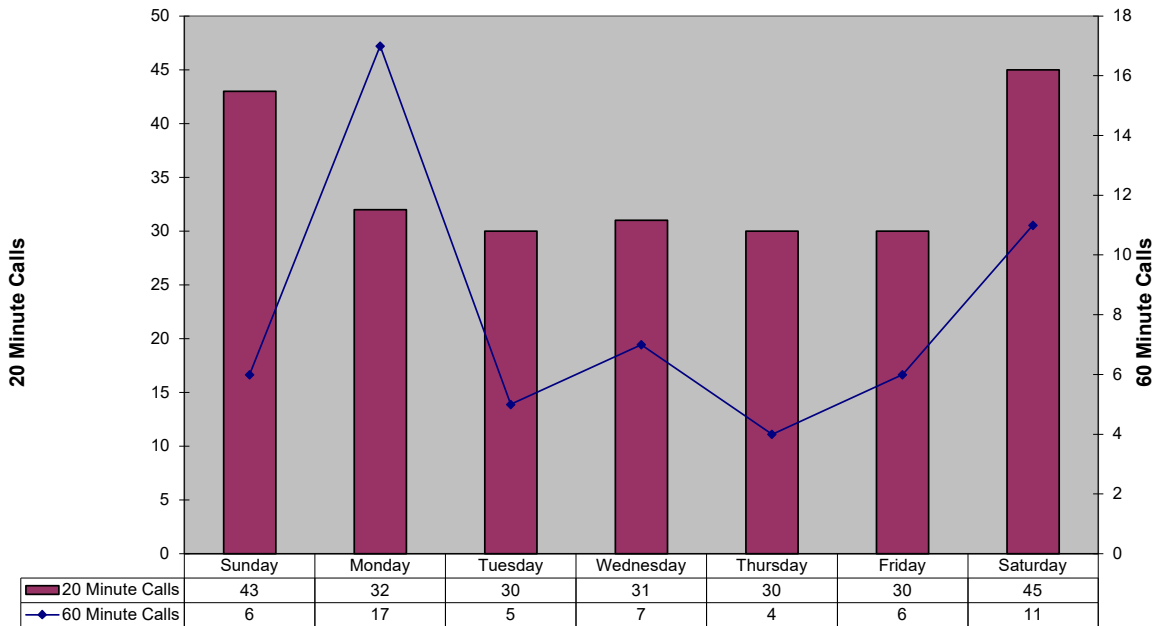
**Percent of Police Calls Held 20 and 60 Minutes
Thirteen Month Comparison**



20 and 60 Minute Calls Held by Time of Day

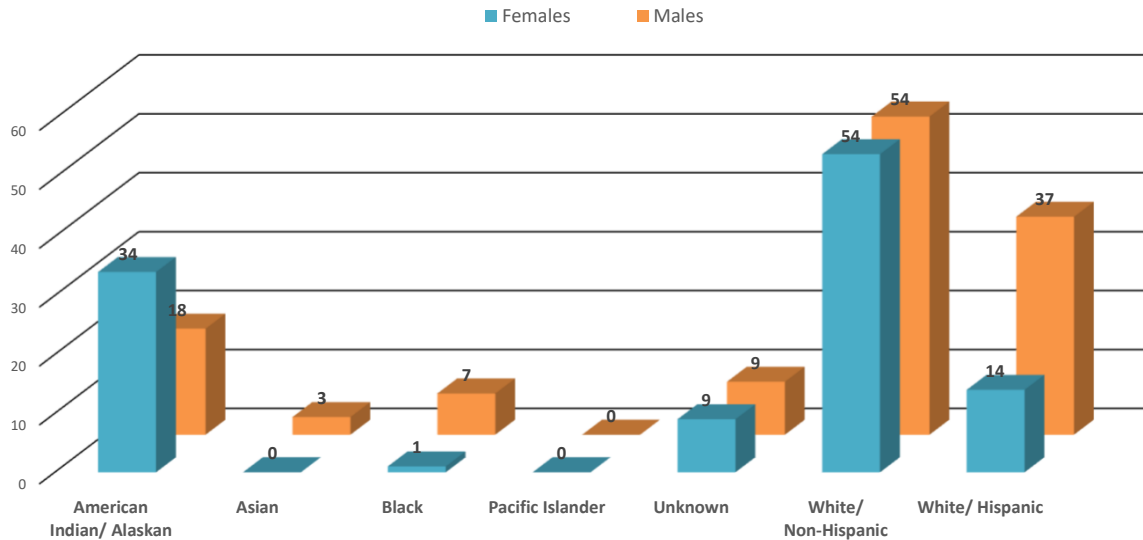


20 and 60 Minute Calls Holding by Day of Week



In an effort to be more transparent, we have started presenting arrest and victimization rates year to date. These statistics are currently being impacted by trends related to the Covid -19 pandemic. Flagstaff has seen less visitation and tourism, and a reduction in our college student population. This has positively manifested itself in reduced criminality and arrests in some areas. Our community is one of only a few that has provided additional housing options for homeless populations. This has drawn more homeless individuals to Flagstaff. Unfortunately, we continue to see Native American members of our homeless population over-represented in both arrest and victimization data. Many of these arrests are on those who are not City residents, and many of these arrests are of repeat offenders.

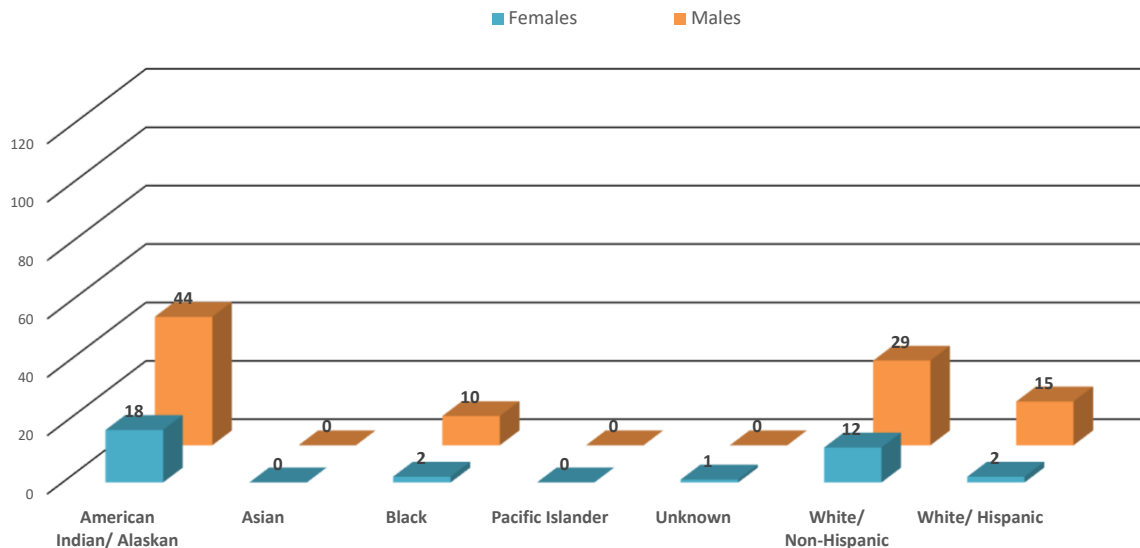
Felony Incidents- Victims by Race



*This data is representative of a single, victim by race/ethnicity, in a single incident only. There may be multiple victims of the same race/ethnicity within that incident, but that data is not captured or displayed above.

**If there are multiple victims within the same incident, that have a different race/ethnicity, those differering races/ethnicities are identified and displayed above.

Felony Arrests by Race

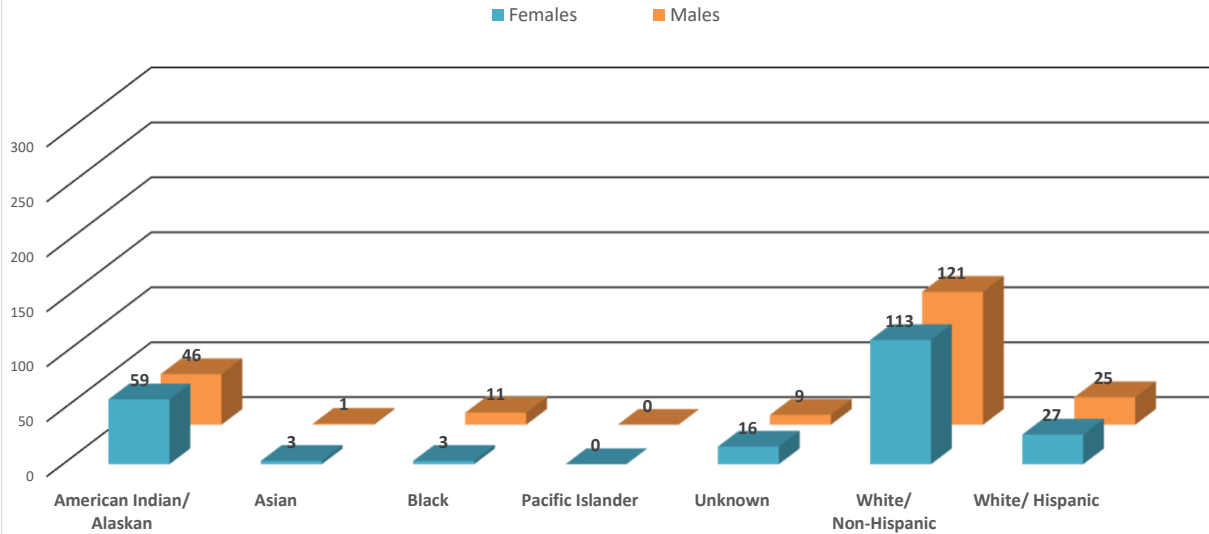


*This data is representative of a single, individual arrest by incident only; these numbers do not reflect the total number of charges from a single incident.

**There may be individuals who have been arrested for different incidents; if the same person is arrested for a different incident (generally different time/date/location), that information is captured and displayed on the above chart.

In an effort to be more transparent, we have started presenting arrest and victimization rates year to date. These statistics are currently being impacted by trends related to the Covid -19 pandemic. Flagstaff has seen less visitation and tourism, and a reduction in our college student population. This has positively manifested itself in reduced criminality and arrests in some areas. Our community is one of only a few that has provided additional housing options for homeless populations. This has drawn more homeless individuals to Flagstaff. Unfortunately, we continue to see Native American members of our homeless population over-represented in both arrest and victimization data. Many of these arrests are on those who are not City residents, and many of these arrests are of repeat offenders.

Misdemeanor Incidents- Victims by Race

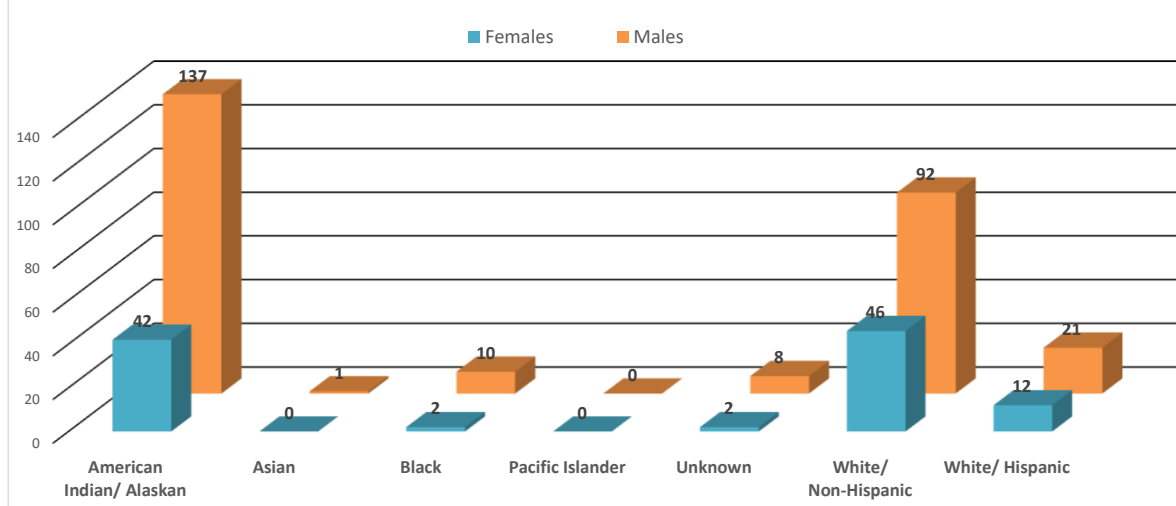


*This data is representative of a single, victim by race/ethnicity, in a single incident only. There may be multiple victims of the same race/ethnicity within that incident, but that data is not captured or displayed above.

**If there are multiple victims within the same incident, that have a different race/ethnicity, those differing races/ethnicities are identified and displayed above.

***If the same individual has been the victim of different incidents, that data is captured and displayed above.

Misdemeanor Arrests by Race



*This data is representative of a single, individual arrest by incident only; these numbers do not reflect the total number of charges from a single incident.

**There may be individuals who have been arrested for different incidents; if the same person is arrested for a different incident (generally different time/date/location), that information is captured and displayed on the above chart.



FLAGSTAFF POLICE DEPARTMENT MONTHLY REPORT February 2023

	FEBRUARY	Y.T.D. 2023	Y.T.D. 2022	% CHANGE
CALLS FOR SERVICE (TOTAL)	5,249	11,505	11,160	3.1%
1. Police	2,717	5,903	6,054	-2.5%
2. Sheriff	1,171	2,705	2,393	13.0%
3. City Fire	1,132	2,356	2,283	3.2%
4. Rural Fire	218	505	417	21.1%
5. Forest Service	8	32	11	190.9%
6. US NPS	3	4	2	
	-			
REPORTS TAKEN (TOTAL)	1,116	2,419	2,814	-14.0%
1. Misdemeanor	467	1,018	1,159	-12.2%
2. Felony	145	291	388	-25.0%
3. Incident	504	1,110	1,267	-12.4%
Accident	237	525	407	29.0%
Incident - no report	1,601	3,385	3,240	4.5%
Short Form Reports	-	3	29	-89.7%
Violent Crimes	11	33	42	-21.4%
Property Crimes	106	226	236	-4.2%
	-			
ARRESTS (TOTAL)	291	601	569	5.6%
1. Misdemeanor arrests	171	374	415	-9.9%
2. Felony Arrests	70	138	154	-10.4%
In-Custody Bookings	229	477	304	56.9%
Juvenile Arrests	4	6	12	-50.0%
Juvenile Referrals	11	24	23	4.3%
Warrant Arrests	50	89	40	122.5%
TRAFFIC ACCIDENTS (TOTAL)				
Includes Private Property	237	525	407	29.0%
1. Non-Injury Accidents	211	467	355	31.5%
2. Injury Accidents	26	58	50	16.0%
3. Fatal Accidents	-	-	2	
Private Property Accidents	53	108	115	-6.1%
DUI Related Accidents	10	19	12	58.3%
CITATIONS ISSUED (TOTAL)	267	450	724	-37.8%
1. Traffic	163	349	463	-24.6%
D.U.I.'s	56	107	95	12.6%
2. Criminal (Non-Traffic)	104	218	261	-16.5%
	-			
WARNING & REPAIR ORDERS	437	941	1,193	-21.1%
FIELD I.D. CARDS	207	553	797	-30.6%
PI CONTACTS	34	88	169	-47.9%
DETECTIVES				
1. Cases Assigned	185	391	504	-22.4%
2. Cases Cleared	81	133	266	-50.0%
3. Clearance Rate	25.2%	34.0%	52.8%	-18.8%
DOMESTIC VIOLENCE				
1. Incidents Reported	126	282	314	-10.2%
a. Misdemeanor	106	212	248	-14.5%
b. Felony	20	40	66	-39.4%
2. Arrests	37	88	101	-12.9%



FLAGSTAFF POLICE DEPARTMENT MONTHLY REPORT
February 2023

	FEBRUARY	Y.T.D. 2023	Y.T.D. 2022	% CHANGE
COMMUNITY RELATIONS & TRAINING				
1. Public Speaking Presentations Includes Media Releases	67	160	198	-19.2%
2. Training - Total Hours	2,930	6,851	3,907	75.4%
Academy	720	1,560	1,328	17.5%
Field Training	1,920	4,032	1,128	257.4%
Advance Officer Training	290	1,259	1,451	-13.2%
3. Volunteer Hours	179	308	93	231.5%
4. Community Support Mtg.	2	5	40	-87.5%
ANIMAL CONTROL (PATROL)				
1. Impounds	15	25	16	56.3%
2. Citations	-	-	-	0.0%
	-			
PATROL HOURS IN FIELD	8,115	16,894	18,969	-10.9%

PERSONNEL	Field Operations	Support Services	
1. Authorized Strength	119	57	
2. Actual Strength	112	38	
3. Resignations or Terminations	0	1	
4. New Hires	1	0	