

# CompStat Report

FLAGSTAFF POLICE DEPARTMENT

March 2023

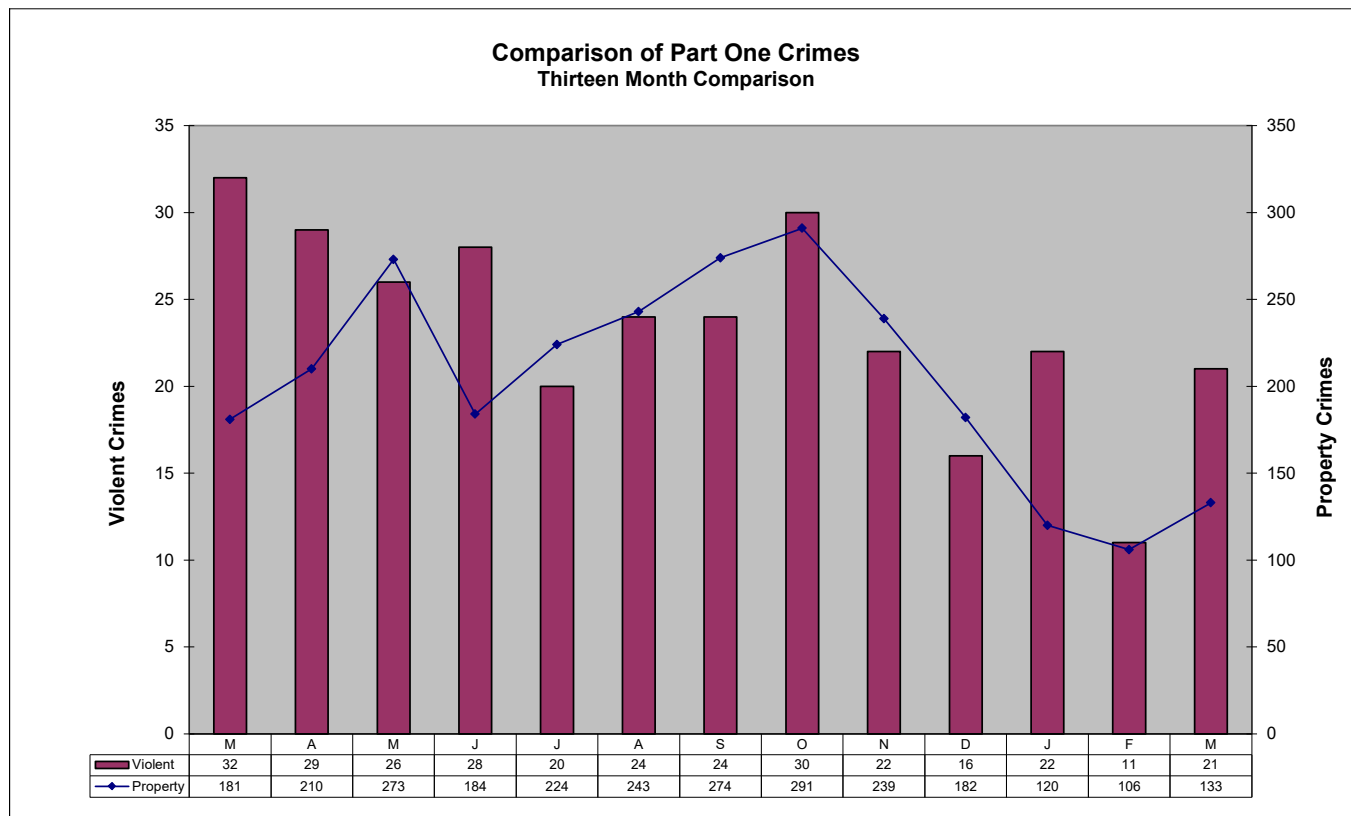


*ad honorem*

## Part One Crime Summary

March 2023

CRIME TYPE	Dec	Jan	Feb	Mar	YTD		%	CLEARED	% CLEARED	
					2023	2022	Change	2023	2023	2022
HOMICIDE*	0	0	0	1	1	2	-50%	0	100%	100%
SEX OFFENSES*	4	10	5	8	23	32	-28%	2	13%	59%
SEX ASSAULTS	1	6	1	2	9	14	-36%	1	22%	79%
ROBBERY*	2	1	2	3	6	8	-25%	3	83%	50%
AGG ASSAULT*	10	11	4	9	24	32	-25%	11	63%	72%
BURGLARY	4	1	7	10	18	17	6%	1	17%	53%
LARC THEFT	124	116	97	113	326	325	0%	77	38%	49%
GTA	9	3	2	9	14	24	-42%	107	43%	33%
<b>VIOLENT*</b>	16	22	11	21	54	74	-27%	16	44%	65%
<b>PROPERTY</b>	94	120	106	133	359	467	-23%	78	35%	36%
<b>GRAND TOTAL</b>	198	142	117	154	413	541	-24%	94	37%	40%
ARSON	0	0	0	1	1	4	-75%	0	0%	50%



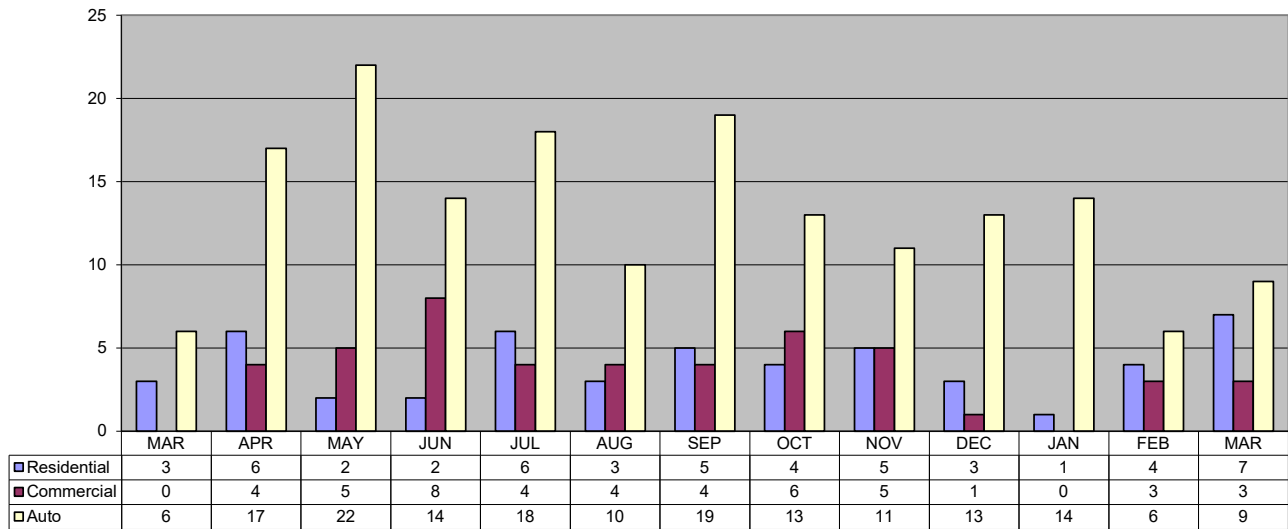
# Patrol Activity / Goals

March 2023

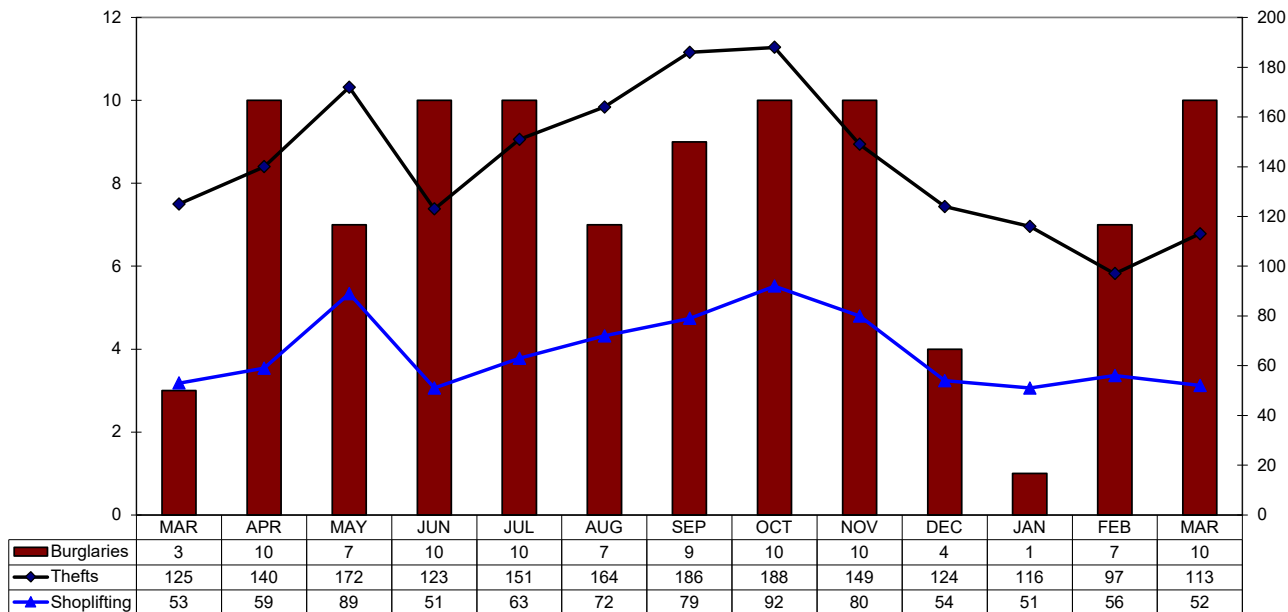
ACTIVITY TYPE	Nov	Dec	Jan	Feb	Mar	YTD 2023	YTD 2022	% Change
<b>Robberies</b>	3	1	1	2	3	6	8	-25%
<b>Total Burglaries</b>	10	4	1	7	10	18	17	6%
Res Burglaries	15	10	1	4	7	12	12	0%
Comm Burglaries	5	3	-	3	3	6	5	20%
<b>Auto Burglaries</b>	5	1	14	6	9	29	26	12%
<b>Shoplifting</b>	80	54	51	56	52	159	121	31%
<b>Citations/Warnings</b>	802	734	687	600	629	1,916	2,473	-23%
<b>DUI Arrests</b>	42	33	51	56	47	154	129	19%
<b>Collisions</b>	208	212	288	237	152	677	629	8%

**NOTE: In addition to the 47 DUI Arrests, 26 waiting for blood results.**

Thirteen Month Comparison of all Burglaries



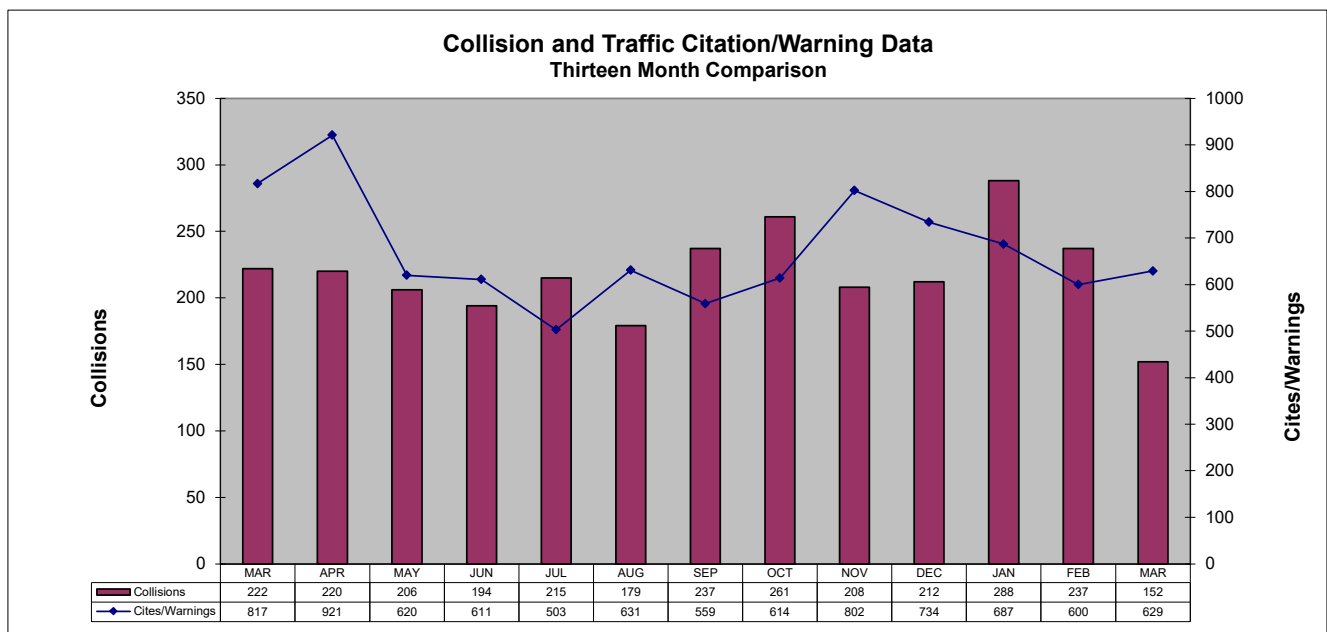
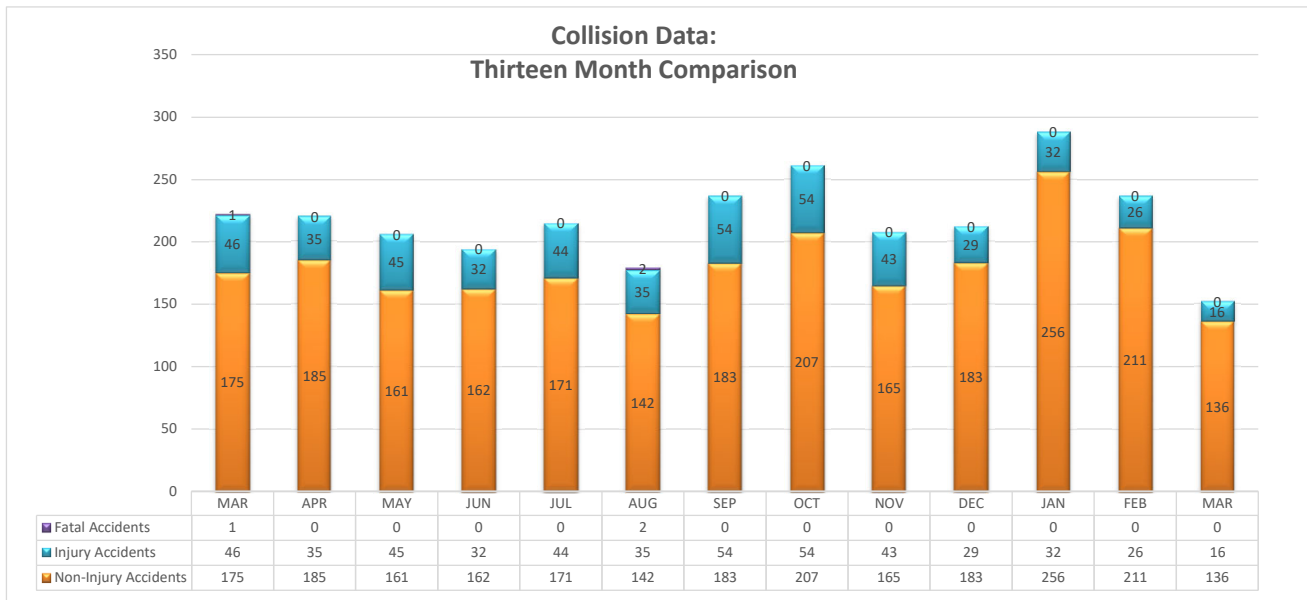
Thirteen Month Comparison of Thefts and Burglaries



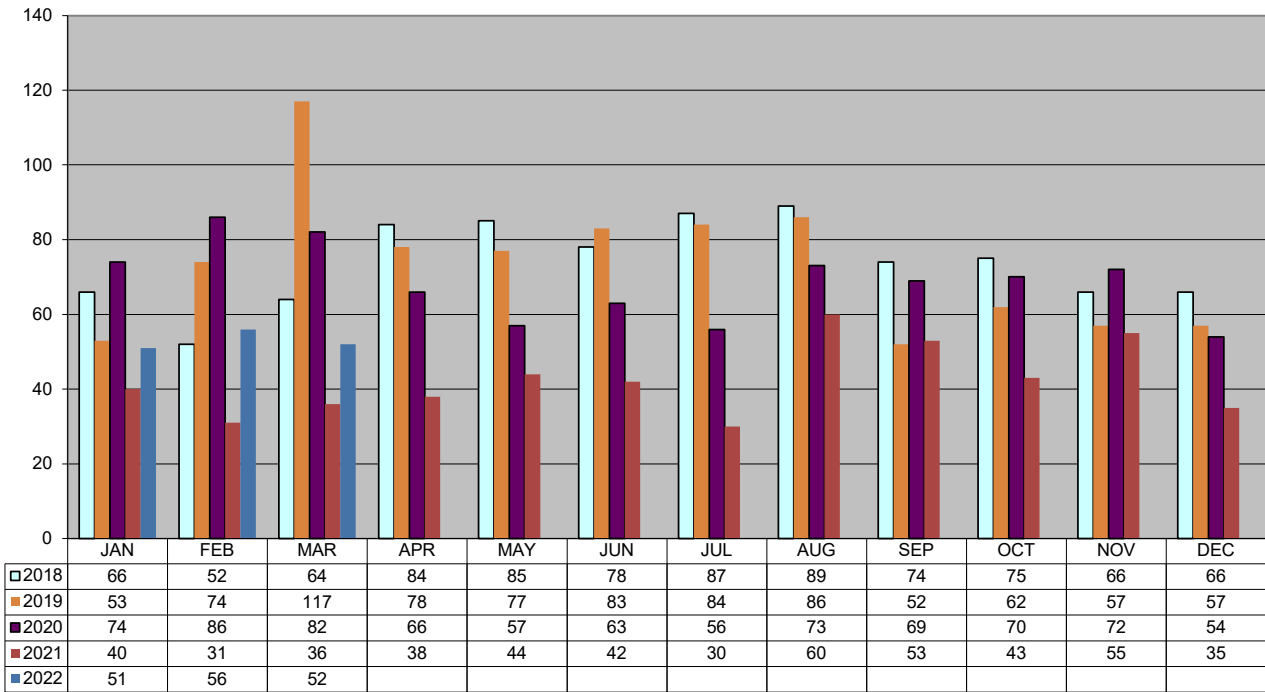
# TRAFFIC DATA

March 2023

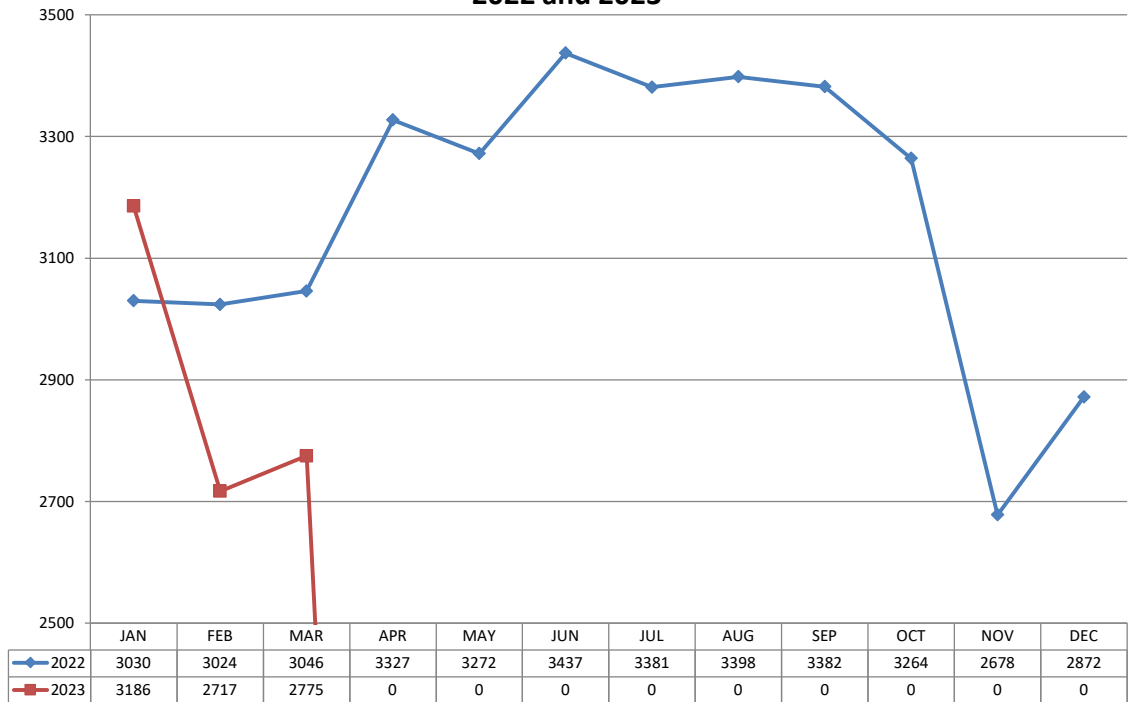
ACTIVITY TYPE	Nov	Dec	Jan	Feb	Mar	YTD	YTD	%
						2023	2022	Change
Non-Injury Collisions	165	183	256	211	136	603	530	14%
Injury Collisions	43	29	32	26	16	74	96	-23%
Fatal Collisions	0	0	0	0	0	0	3	-100%
Private Property Collisions	36	50	55	53	26	134	186	-28%
DUI Related Collisions	9	9	9	10	8	27	18	50%
DUI Arrests (Total)	42	33	51	56	47	154	129	19%
DUI Arrests (Alcohol)			46	54	46	146	112	30%
DUI Arrests (Drugs)			5	2	1	8	17	-53%
Traffic Citations	188	169	183	162	157	502	711	-29%
Warnings	614	565	504	437	472	1,413	1,762	-20%
Parking Citations	191	36	215	403	112	730	163	348%
All Traffic Stops	1,020	937	887	786	846	2,519	3,142	-20%
Traffic Stops-No Enforcement	44	23	27	42	31	100	173	-42%
30-Day Impounds	5	6	7	11	0	18	39	-54%



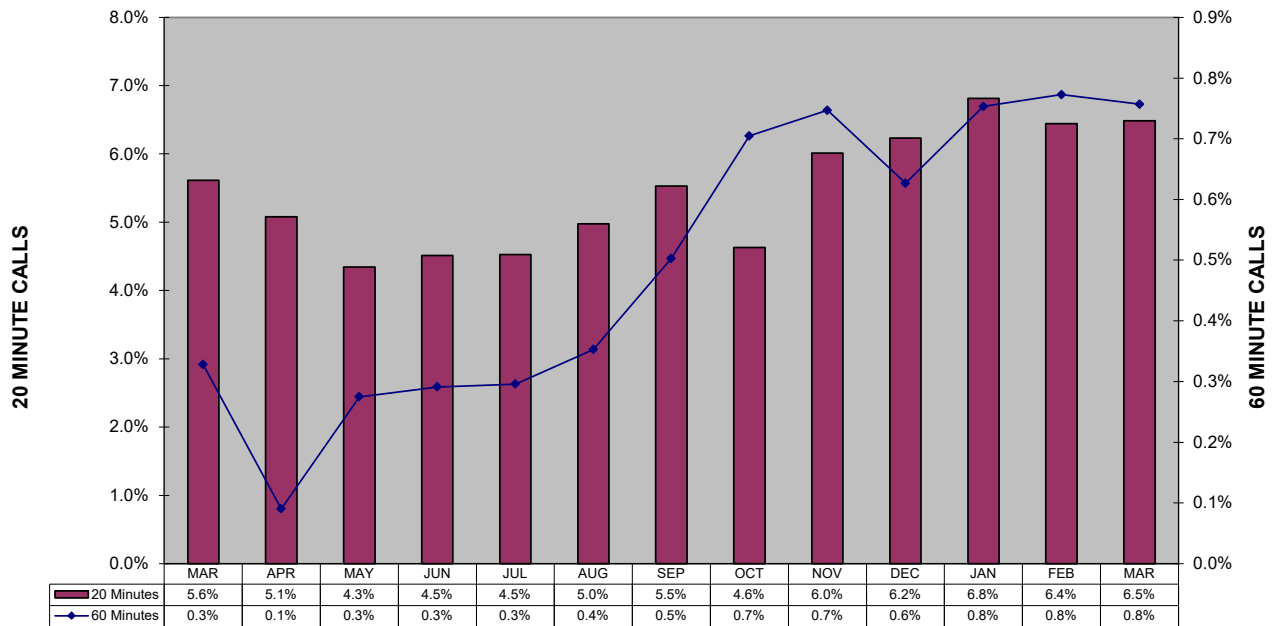
### Shoplifting 5-Year Comparison



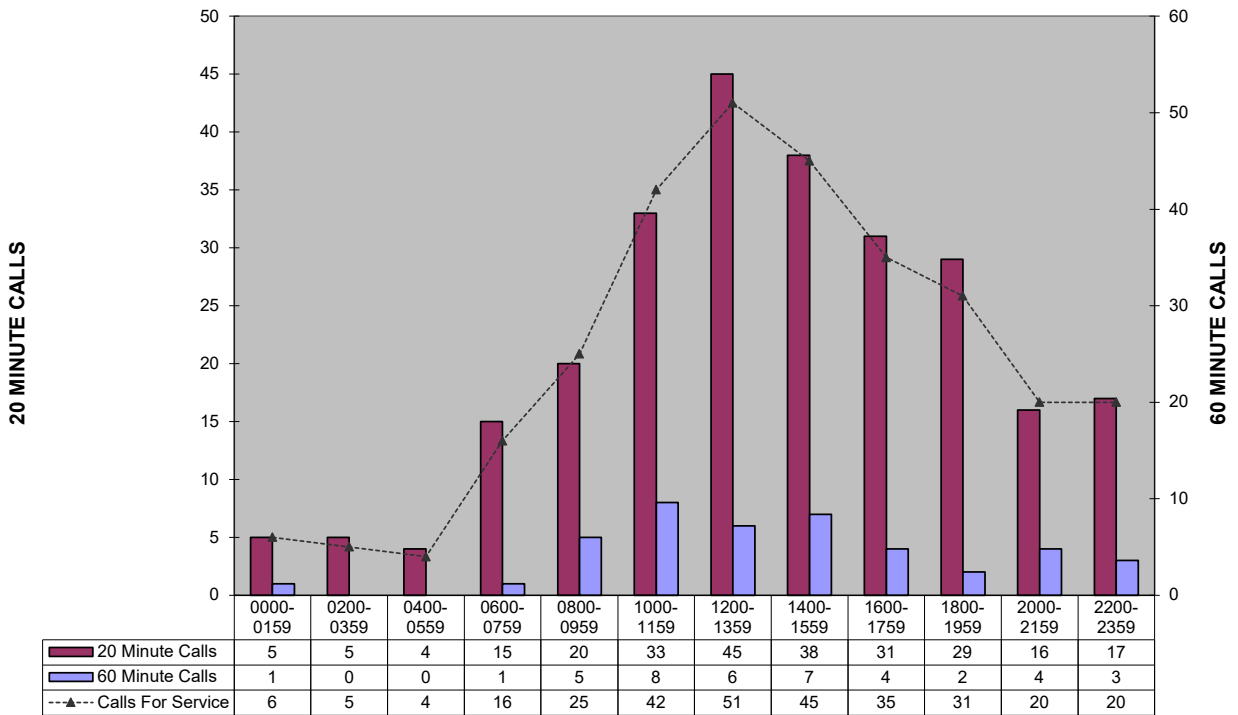
### Police Calls for Service - 12 Month Trend 2022 and 2023



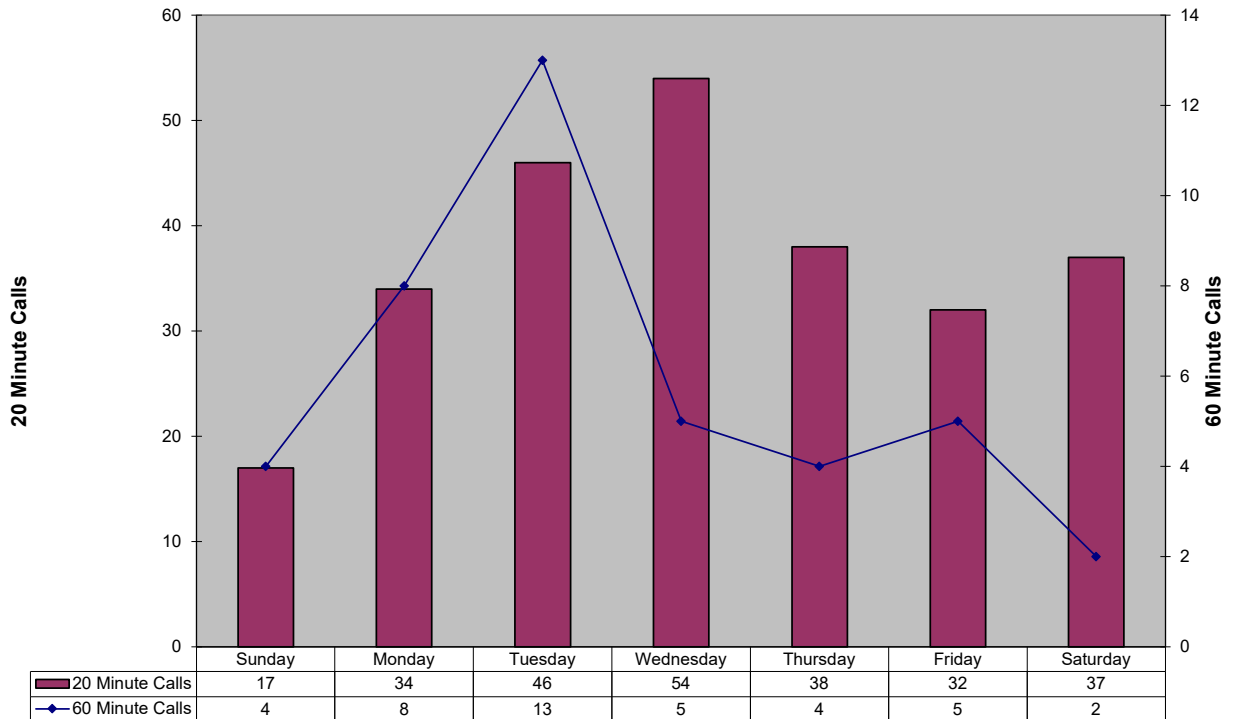
**Percent of Police Calls Held 20 and 60 Minutes  
Thirteen Month Comparison**



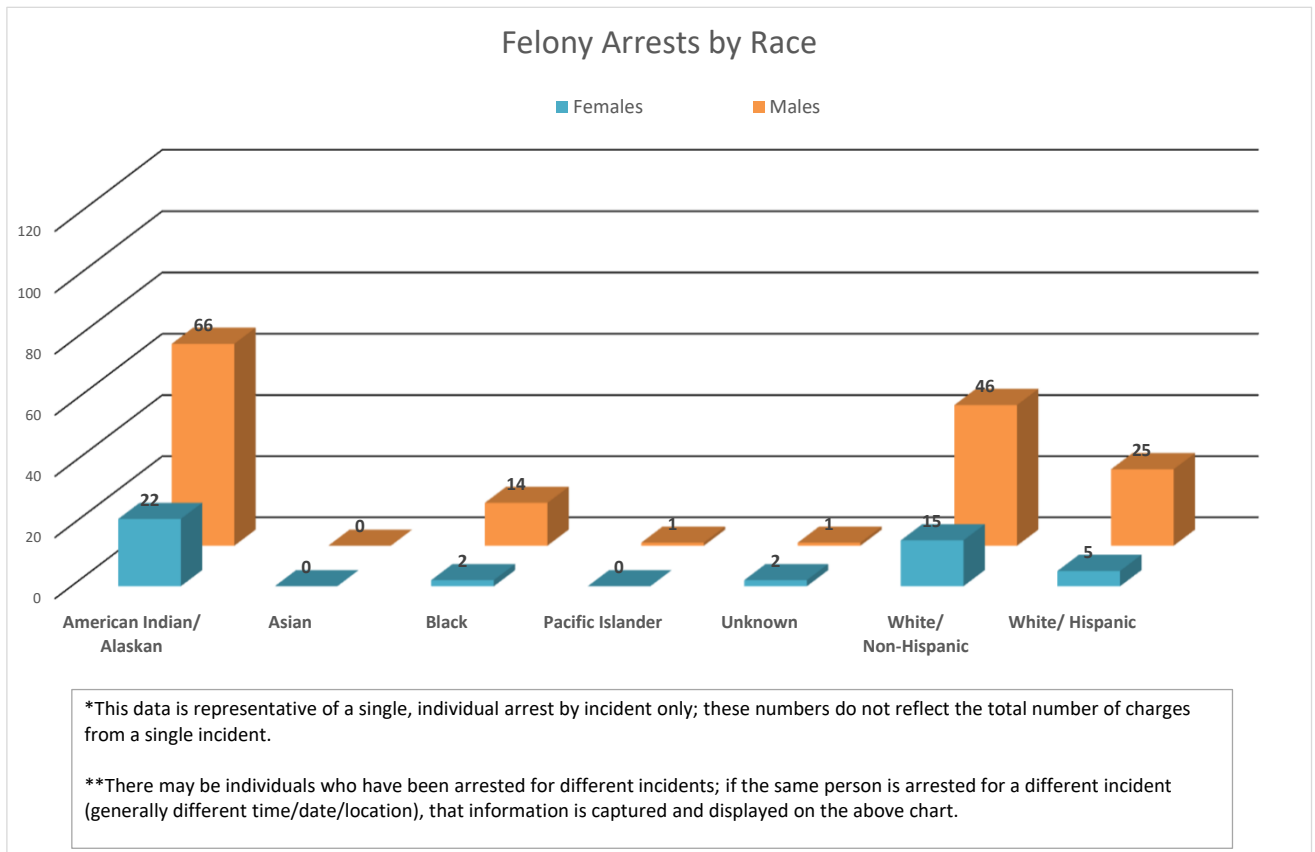
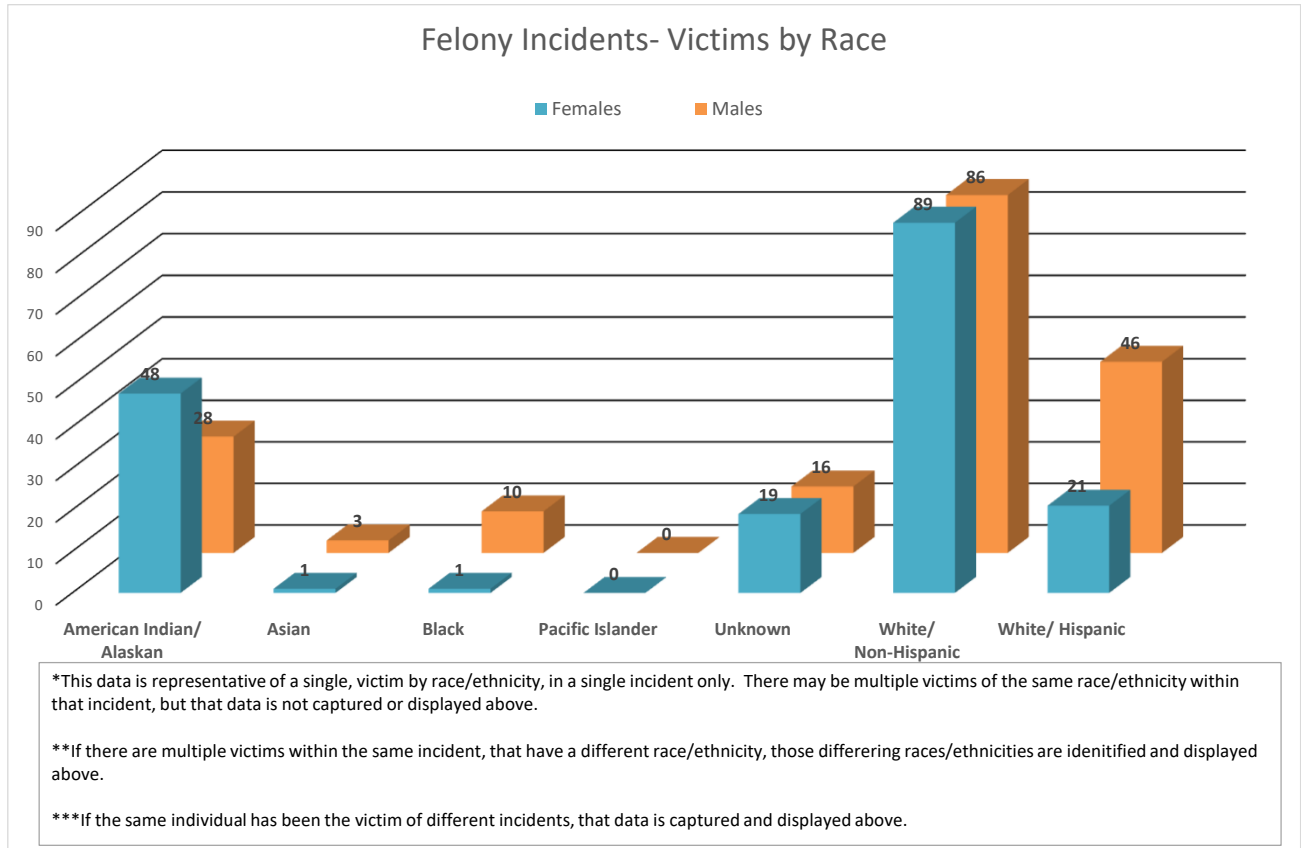
### 20 and 60 Minute Calls Held by Time of Day



### 20 and 60 Minute Calls Holding by Day of Week

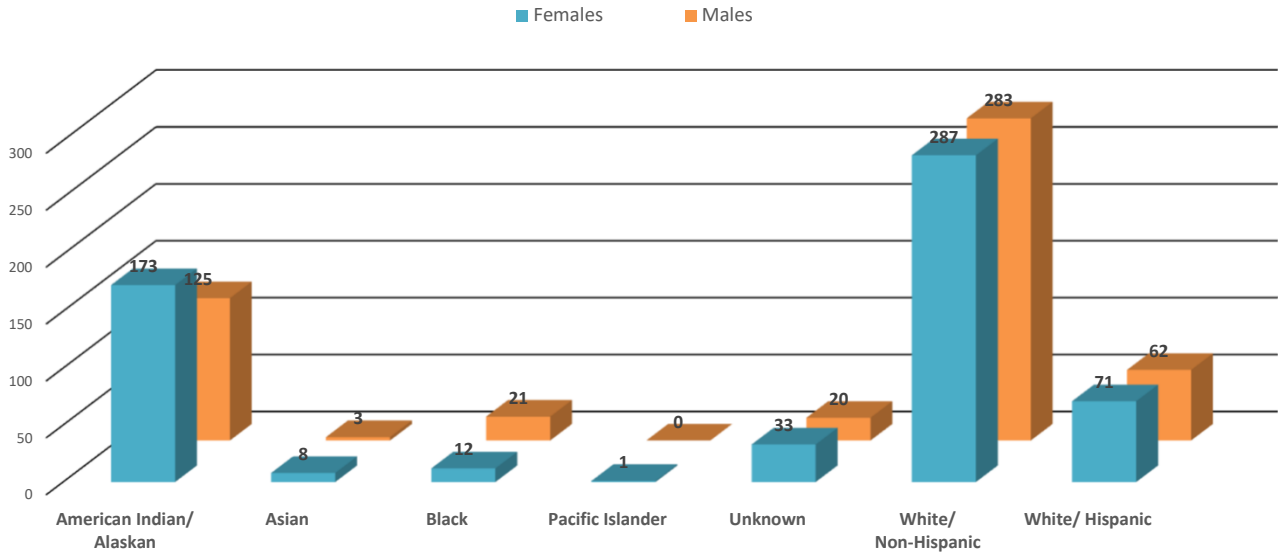


In an effort to be more transparent, we have started presenting arrest and victimization rates year to date. These statistics are currently being impacted by trends related to the Covid -19 pandemic. Flagstaff has seen less visitation and tourism, and a reduction in our college student population. This has positively manifested itself in reduced criminality and arrests in some areas. Our community is one of only a few that has provided additional housing options for homeless populations. This has drawn more homeless individuals to Flagstaff. Unfortunately, we continue to see Native American members of our homeless population over-represented in both arrest and victimization data. Many of these arrests are on those who are not City residents, and many of these arrests are of repeat offenders.



In an effort to be more transparent, we have started presenting arrest and victimization rates year to date. These statistics are currently being impacted by trends related to the Covid -19 pandemic. Flagstaff has seen less visitation and tourism, and a reduction in our college student population. This has positively manifested itself in reduced criminality and arrests in some areas. Our community is one of only a few that has provided additional housing options for homeless populations. This has drawn more homeless individuals to Flagstaff. Unfortunately, we continue to see Native American members of our homeless population over-represented in both arrest and victimization data. Many of these arrests are on those who are not City residents, and many of these arrests are of repeat offenders.

### Misdemeanor Incidents- Victims by Race

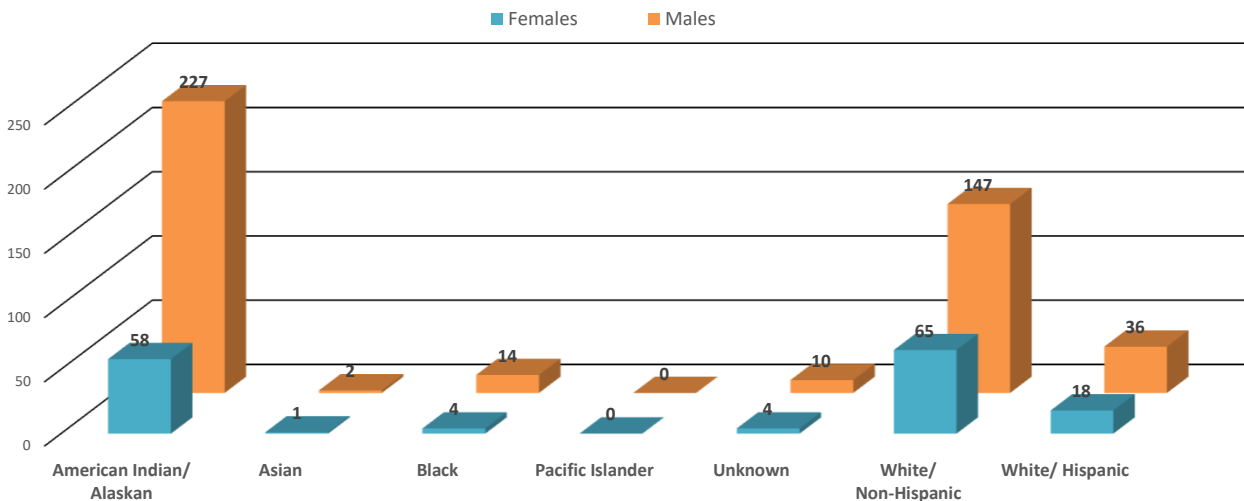


\*This data is representative of a single, victim by race/ethnicity, in a single incident only. There may be multiple victims of the same race/ethnicity within that incident, but that data is not captured or displayed above.

\*\*If there are multiple victims within the same incident, that have a different race/ethnicity, those differing races/ethnicities are identified and displayed above.

\*\*\*If the same individual has been the victim of different incidents, that data is captured and displayed above.

### Misdemeanor Arrests by Race



\*This data is representative of a single, individual arrest by incident only; these numbers do not reflect the total number of charges from a single incident.

\*\*There may be individuals who have been arrested for different incidents; if the same person is arrested for a different incident (generally different time/date/location), that information is captured and displayed on the above chart.





## FLAGSTAFF POLICE DEPARTMENT MONTHLY REPORT

### March 2023

	MARCH	Y.T.D. 2023	Y.T.D. 2022	% CHANGE
<b>CALLS FOR SERVICE (TOTAL)</b>	5503	17008	16857	0.9%
1. Police	2775	8678	9100	-4.6%
2. Sheriff	1278	3983	3585	11.1%
3. City Fire	1210	3566	3501	1.9%
4. Rural Fire	227	732	647	13.1%
5. Forest Service	11	43	19	126.3%
6. US NPS	2	6	5	
<b>REPORTS TAKEN (TOTAL)</b>	1020	3439	4227	-18.6%
1. Misdemeanor	494	1512	1760	-14.1%
2. Felony	189	480	592	-18.9%
3. Incident	337	1447	1875	-22.8%
Accident	152	677	629	7.6%
Incident - no report	1755	5140	4873	5.5%
Short Form Reports	0	3	40	-92.5%
Violent Crimes	21	54	74	-27.0%
Property Crimes	133	359	370	-3.0%
<b>ARRESTS (TOTAL)</b>	325	926	896	3.3%
1. Misdemeanor arrests	214	588	656	-10.4%
2. Felony Arrests	66	204	240	-15.0%
In-Custody Bookings	267	744	554	34.3%
Juvenile Arrests	7	13	15	-13.3%
Juvenile Referrals	14	38	31	22.6%
Warrant Arrests	45	134	80	67.5%
<b>TRAFFIC ACCIDENTS (TOTAL)</b>				
Includes Private Property	152	677	629	7.6%
1. Non-Injury Accidents	136	603	530	13.8%
2. Injury Accidents	16	74	96	-22.9%
3. Fatal Accidents	0	0	3	-100.0%
Private Property Accidents	26	134	186	-28.0%
DUI Related Accidents	8	27	18	50.0%
<b>CITATIONS ISSUED (TOTAL)</b>	157	607	1106	-45.1%
1. Traffic	157	506	711	-28.8%
D.U.I.'s	47	154	129	19.4%
2. Criminal (Non-Traffic)	0	218	395	-44.8%
<b>WARNING &amp; REPAIR ORDERS</b>	472	1413	1762	-19.8%
<b>FIELD I.D. CARDS</b>	287	840	1244	-32.5%
<b>PI CONTACTS</b>	44	132	287	-54.0%
<b>DETECTIVES</b>				
1. Cases Assigned	227	618	751	-17.7%
2. Cases Cleared	76	209	391	-46.5%
3. Clearance Rate	33.5%	33.8%	52.1%	-18.2%
<b>DOMESTIC VIOLENCE</b>				
1. Incidents Reported	130	412	468	-12.0%
a. Misdemeanor	113	325	373	-12.9%
b. Felony	17	57	95	-40.0%
2. Arrests	42	130	148	-12.2%



**FLAGSTAFF POLICE DEPARTMENT MONTHLY REPORT**  
**March 2023**

	<b>MARCH</b>	<b>Y.T.D. 2023</b>	<b>Y.T.D. 2022</b>	<b>% CHANGE</b>
<b>COMMUNITY RELATIONS &amp; TRAINING</b>				
1. Public Speaking Presentations				
Includes Media Releases	102	262	281	-6.8%
2. Training - Total Hours	0	6851.25	6541	4.7%
Academy	0	1560	1840	-15.2%
Field Training	0	4032	2600	55.1%
Advance Officer Training	0	1259.25	2101	-40.1%
3. Volunteer Hours	0	308.25	162.75	89.4%
4. Community Support Mtg.	11	16	60	-73.3%
<b>ANIMAL CONTROL (PATROL)</b>				
1. Impounds	25	50	37	35.1%
2. Citations	1	1	0	100.0%
<b>PATROL HOURS IN FIELD</b>				
	8134.75	25029	28895	-13.4%

<b>PERSONNEL</b>	<b>Field Operations</b>	<b>Support Services</b>		
1. Authorized Strength	119	57		
2. Actual Strength	116	37		
3. Resignations or Terminations	1	4		
4. New Hires	5	2		